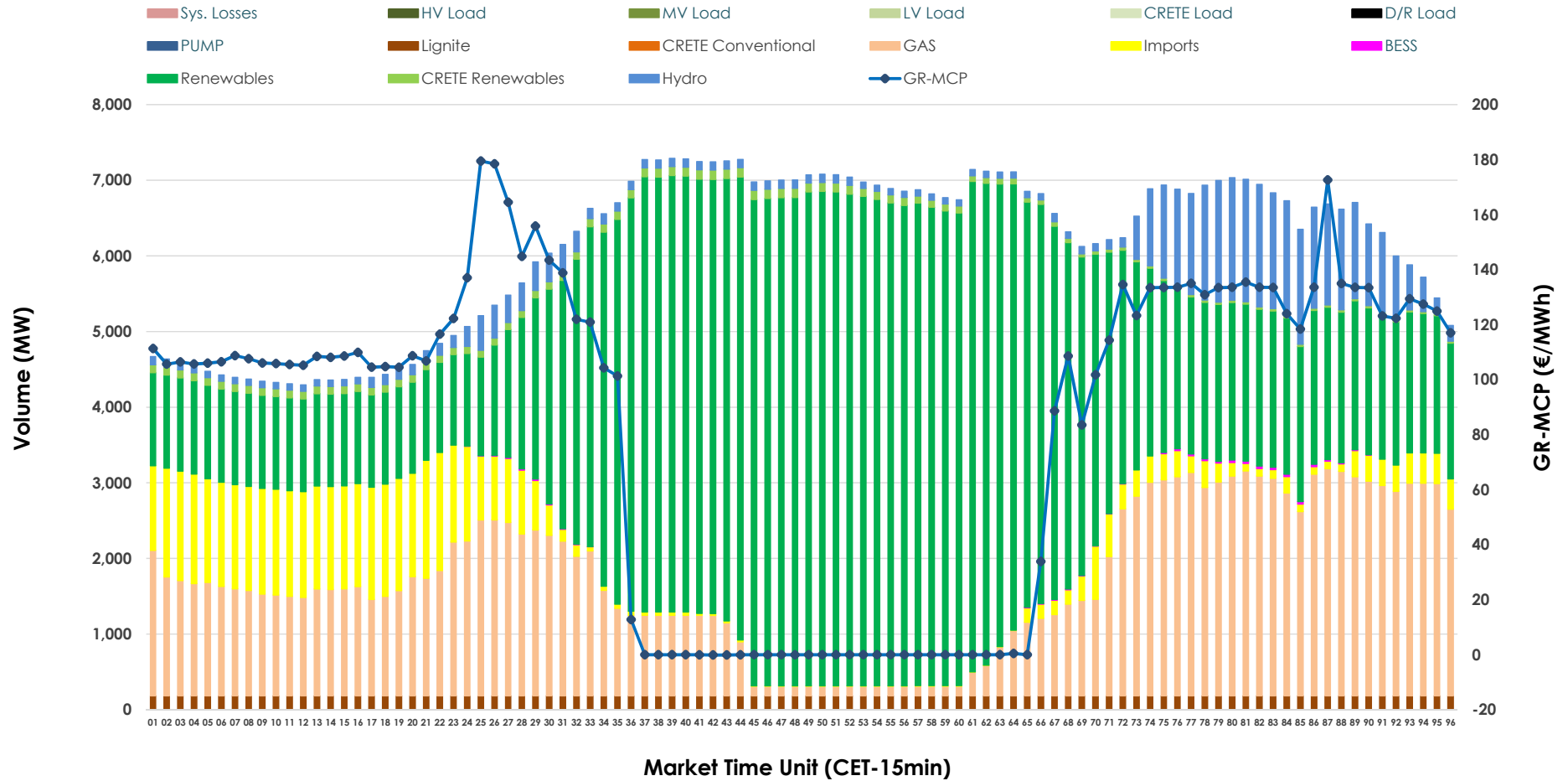


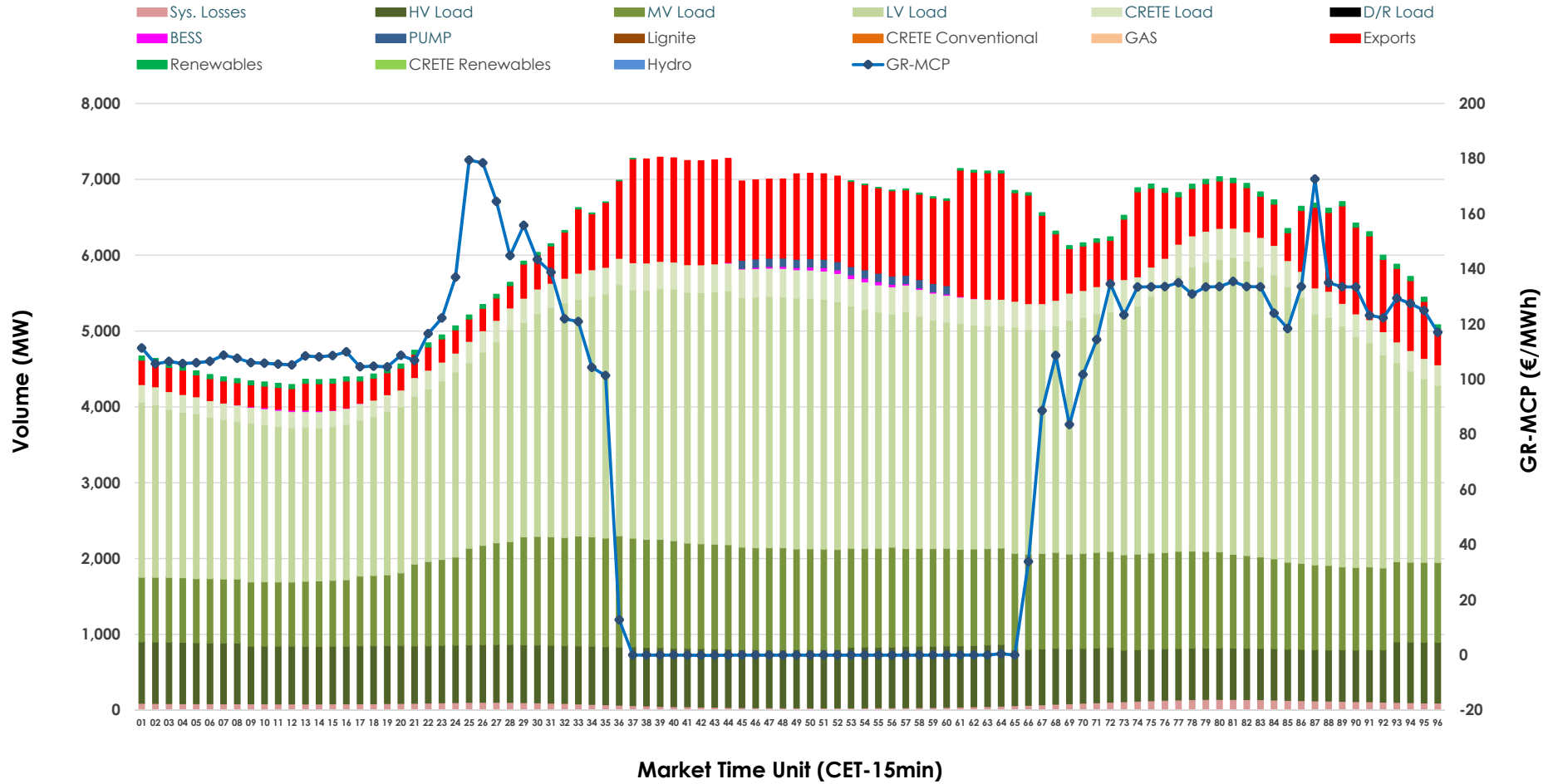


# Day-Ahead Market Outlook

20.04.2026 Day-Ahead Market - Sell



## 20.04.2026 Day-Ahead Market - Buy



### GR Bidding Zone Weekly Figures

Delivery Day	14.04	15.04	16.04	17.04	18.04	19.04	20.04
	↑ 47%	↓ -5%	↓ -27%	↓ -16%	↓ -13%	↑ 6%	↑ 16%
<b>Avg.MCP (€/MWh)</b>	132.81	125.87	91.60	77.40	67.33	71.68	83.41
<b>Max.MCP (€/MWh)</b>	245.16	176.29	214.54	167.98	151.85	166.45	179.47
<b>Min.MCP (€/MWh)</b>	15.01	64.00	0.00	-0.10	-9.50	-8.30	-0.10
	↑ 17%	↑ 5%	↑ 6%	↓ -4%	↓ -8%	↓ -11%	↑ 12%
<b>Tot.Vol(GWh)</b>	298.65	312.79	331.04	318.07	292.47	260.85	293.37

### Trades by Order Type

Delivery Day		14.04	15.04	16.04	17.04	18.04	19.04	20.04	
<b>Ord Price Type</b>		Sell & Buy Trades in (GWh) per Price Type							(%)
<b>PPT</b>	(S)	44.451	45.887	64.098	74.510	71.097	54.859	50.668	34.54%
<b>HBD</b>	(S)	66.771	65.234	74.728	66.668	58.837	50.588	64.774	44.16%
<b>BLK</b>	(S)	33.965	35.606	24.879	17.787	15.650	19.613	21.500	14.66%
<b>CPL</b>	(S)	4.140	9.669	1.814	0.070	0.653	5.365	9.746	6.64%
<b>PPT</b>	(B)	12.075	12.730	13.676	12.831	12.306	11.769	12.952	8.83%
<b>HBD</b>	(B)	127.172	133.448	134.083	130.557	119.439	111.146	124.208	84.68%
<b>BLK</b>	(B)	0.000	0.000	0.000	0.000	0.000	0.000	0.000	0.00%
<b>CPL</b>	(B)	10.080	10.218	17.760	15.647	14.493	7.510	9.527	6.49%
		Sell & Buy Orders Traded per Price Type							(%)
<b>PPT</b>	(S)	1495	1488	1493	1585	1502	1522	1582	35.29%
<b>HBD</b>	(S)	3229	3247	2815	2550	2380	2585	2893	64.53%
<b>BLK</b>	(S)	19	16	13	10	8	12	8	0.18%
<b>PPT</b>	(B)	2309	2317	2353	2363	2270	2258	2318	35.90%
<b>HBD</b>	(B)	4088	4131	4190	4224	4214	4123	4138	64.10%
<b>BLK</b>	(B)	0	0	0	0	0	0	0	0.00%

- MCP** Market Clearing Price (€/MWh)
- PPT** Priority Price-Taking
- HBD** Hybrid
- BLK** Block
- CPL** Market Coupling Flow

### Trade's Volume Mix

	Sell - MWh	Buy - MWh	
<b>Lignite</b> (3.0%)	4,392	0	(0.0%)
<b>Crete Conv.</b> (0.0%)	0	0	(0.0%)
<b>Gas</b> (25.6%)	37,492	0	(0.0%)
<b>Hydro</b> (6.4%)	9,358	0	(0.0%)
<b>Imports</b> (8.2%)	11,958		
<b>RES</b> (55.5%)	81,417	844	(0.6%)
<b>Crete RES</b> (1.3%)	1,936	0	(0.0%)
<b>BESS</b> (0.1%)	134	154	(0.1%)
<b>HV Load</b> (0.0%)	0	18,074	(12.3%)
<b>MV Load</b> (0.0%)	0	28,567	(19.5%)
<b>LV Load</b> (0.0%)	0	69,958	(47.7%)
<b>Crete Load</b> (0.0%)	0	7,660	(5.2%)
<b>Pumping</b> (0.0%)	0	440	(0.3%)
<b>Exports</b>		18,986	(12.9%)
<b>Sys.Losses</b> (0.0%)	0	2,005	(1.4%)
<b>D/R Load</b> (0.0%)	0	0	(0.0%)

