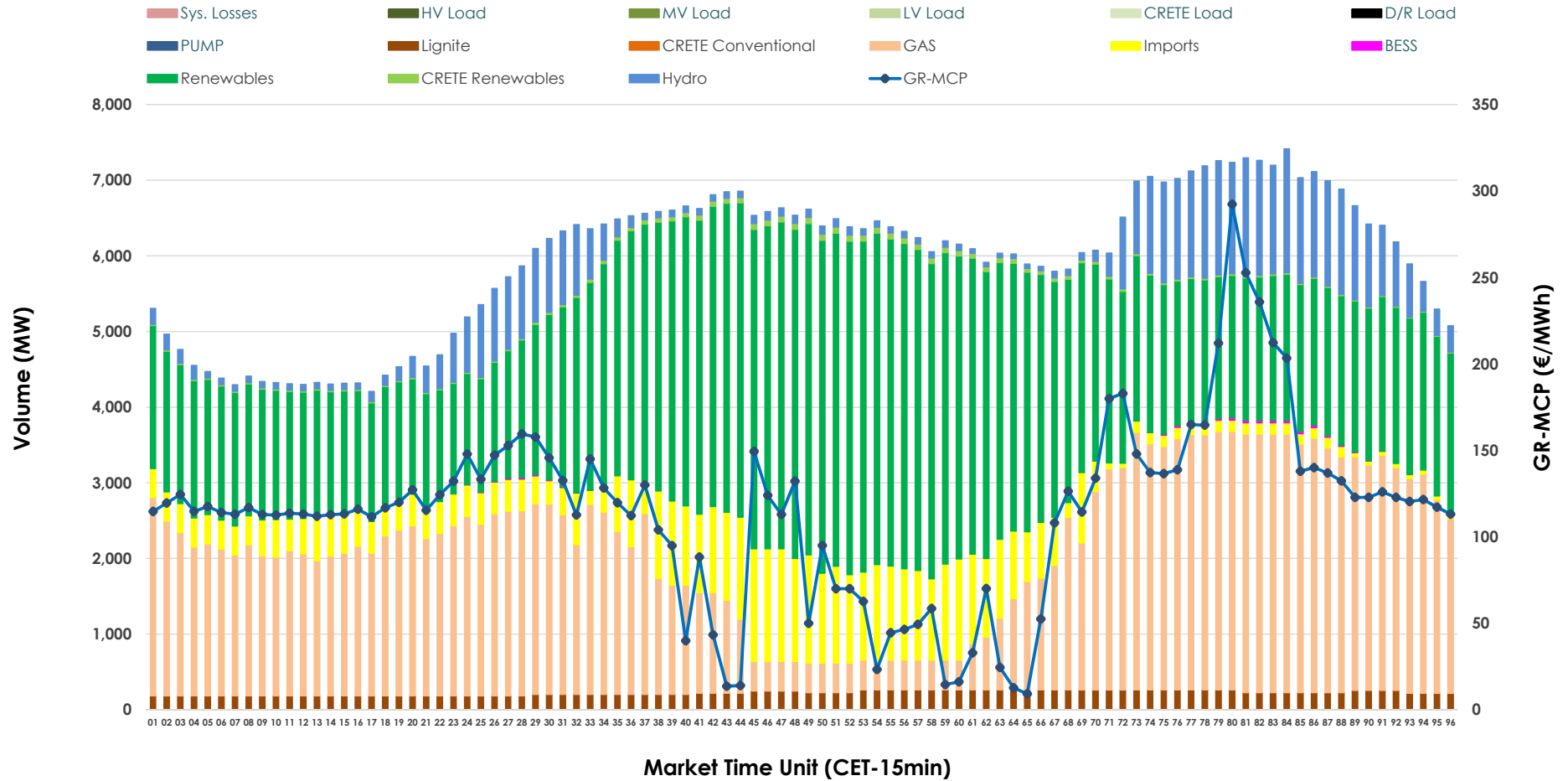


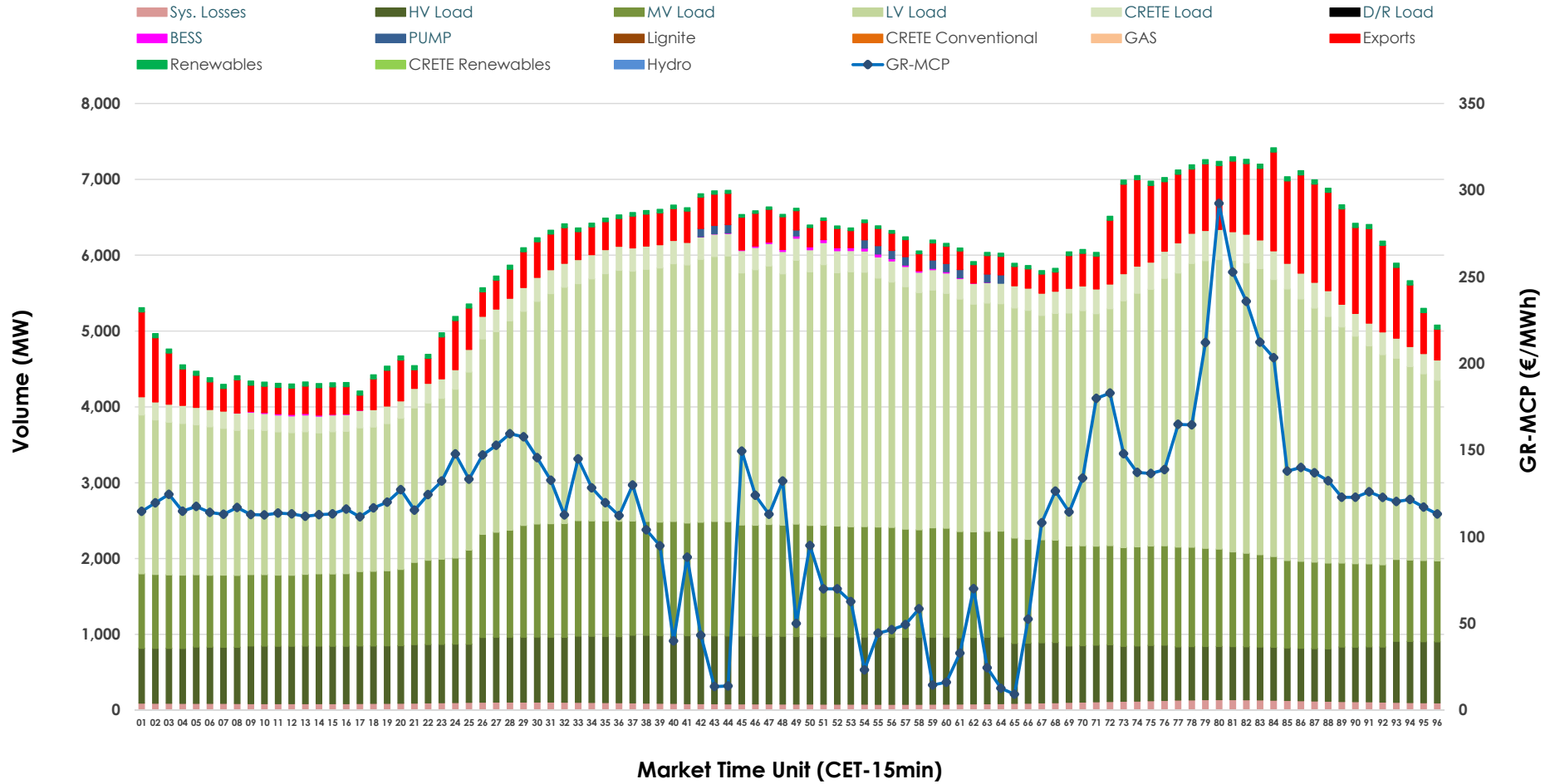


# Day-Ahead Market Outlook

22.04.2026 Day-Ahead Market - Sell



## 22.04.2026 Day-Ahead Market - Buy



### GR Bidding Zone Weekly Figures

Delivery Day	16.04	17.04	18.04	19.04	20.04	21.04	22.04
	👇 -27%	👇 -16%	👇 -13%	👈 6%	👈 16%	👈 0%	👈 38%
<b>Avg.MCP (€/MWh)</b>	91.60	77.40	67.33	71.68	83.41	83.07	114.50
<b>Max.MCP (€/MWh)</b>	214.54	167.98	151.85	166.45	179.47	175.83	292.39
<b>Min.MCP (€/MWh)</b>	0.00	-0.10	-9.50	-8.30	-0.10	-0.01	9.20
	👈 6%	👇 -4%	👇 -8%	👇 -11%	👈 12%	👈 3%	👇 -5%
<b>Tot.Vol(GWh)</b>	331.04	318.07	292.47	260.85	293.37	302.62	286.00

### Trades by Order Type

Delivery Day		16.04	17.04	18.04	19.04	20.04	21.04	22.04	
<b>Ord Price Type</b>		<b>Sell &amp; Buy Trades in (GWh) per Price Type</b>							<b>(%)</b>
<b>PPT</b>	(S)	64.098	74.510	71.097	54.859	50.668	56.261	52.662	36.83%
<b>HBD</b>	(S)	74.728	66.668	58.837	50.588	64.774	64.943	54.230	37.92%
<b>BLK</b>	(S)	24.879	17.787	15.650	19.613	21.500	24.410	26.046	18.21%
<b>CPL</b>	(S)	1.814	0.070	0.653	5.365	9.746	5.696	10.061	7.04%
<b>PPT</b>	(B)	13.676	12.831	12.306	11.769	12.952	12.970	12.705	8.88%
<b>HBD</b>	(B)	134.083	130.557	119.439	111.146	124.208	122.287	123.424	86.31%
<b>BLK</b>	(B)	0.000	0.000	0.000	0.000	0.000	0.000	0.000	0.00%
<b>CPL</b>	(B)	17.760	15.647	14.493	7.510	9.527	16.052	6.871	4.81%
		<b>Sell &amp; Buy Orders Traded per Price Type</b>							<b>(%)</b>
<b>PPT</b>	(S)	1493	1585	1502	1522	1582	1687	1670	34.15%
<b>HBD</b>	(S)	2815	2550	2380	2585	2893	2905	3209	65.62%
<b>BLK</b>	(S)	13	10	8	12	8	11	11	0.22%
<b>PPT</b>	(B)	2353	2363	2270	2258	2318	2312	2317	36.21%
<b>HBD</b>	(B)	4190	4224	4214	4123	4138	4183	4081	63.79%
<b>BLK</b>	(B)	0	0	0	0	0	0	0	0.00%

- MCP** Market Clearing Price (€/MWh)
- PPT** Priority Price-Taking
- HBD** Hybrid
- BLK** Block
- CPL** Market Coupling Flow

### Trade's Volume Mix

	Sell - MWh	Buy - MWh	
<b>Lignite</b> (3.7%)	5,337	0	(0.0%)
<b>Crete Conv.</b> (0.0%)	0	0	(0.0%)
<b>Gas</b> (33.6%)	48,014	0	(0.0%)
<b>Hydro</b> (8.1%)	11,643	0	(0.0%)
<b>Imports</b> (9.7%)	13,919		
<b>RES</b> (44.1%)	63,069	1,146	(0.8%)
<b>Crete RES</b> (0.6%)	897	0	(0.0%)
<b>BESS</b> (0.1%)	121	142	(0.1%)
<b>HV Load</b> (0.0%)	0	19,173	(13.4%)
<b>MV Load</b> (0.0%)	0	30,336	(21.2%)
<b>LV Load</b> (0.0%)	0	69,447	(48.6%)
<b>Crete Load</b> (0.0%)	0	6,994	(4.9%)
<b>Pumping</b> (0.0%)	0	350	(0.2%)
<b>Exports</b>		13,020	(9.1%)
<b>Sys.Losses</b> (0.0%)	0	2,392	(1.7%)
<b>D/R Load</b> (0.0%)	0	0	(0.0%)

