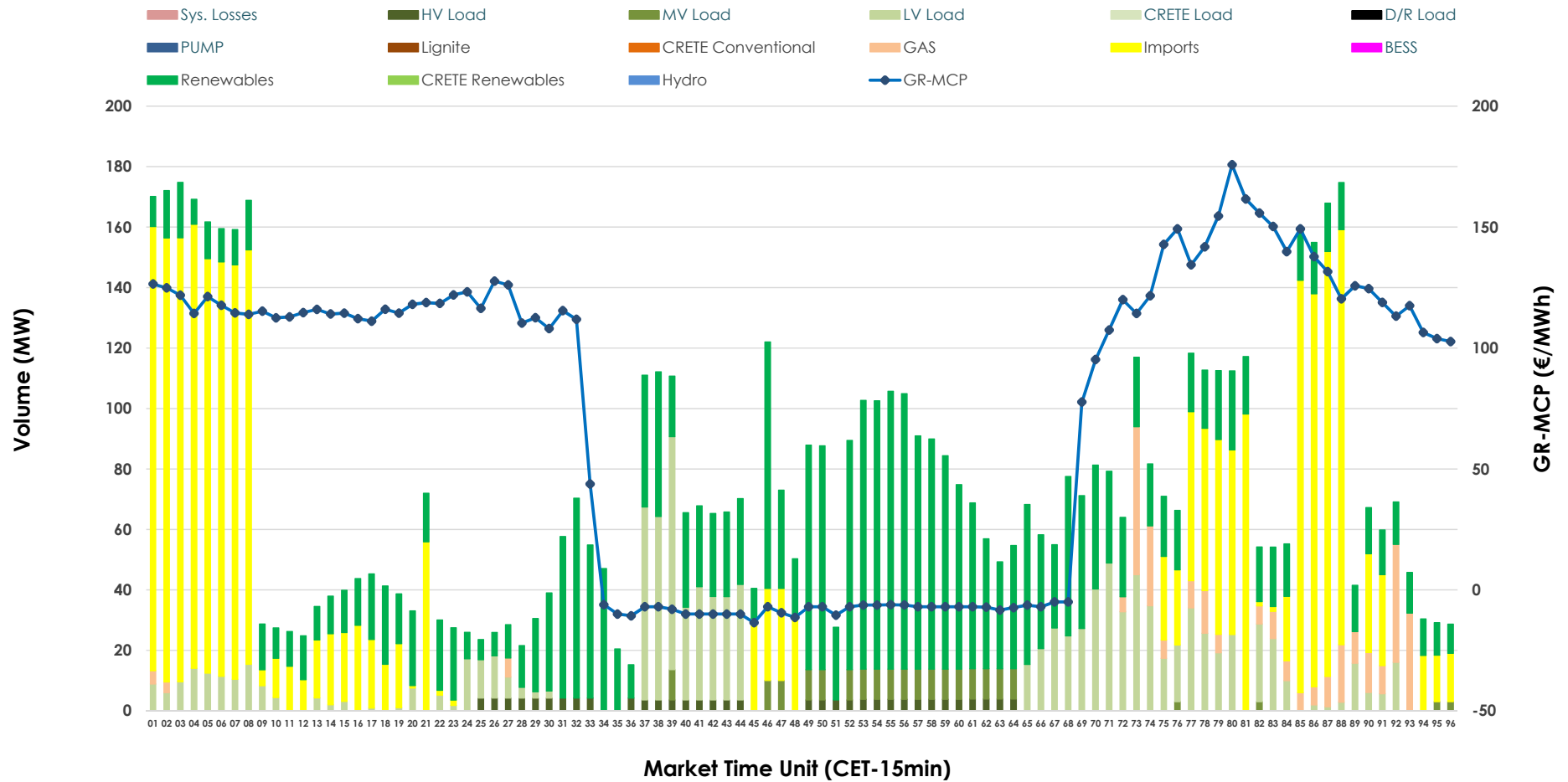


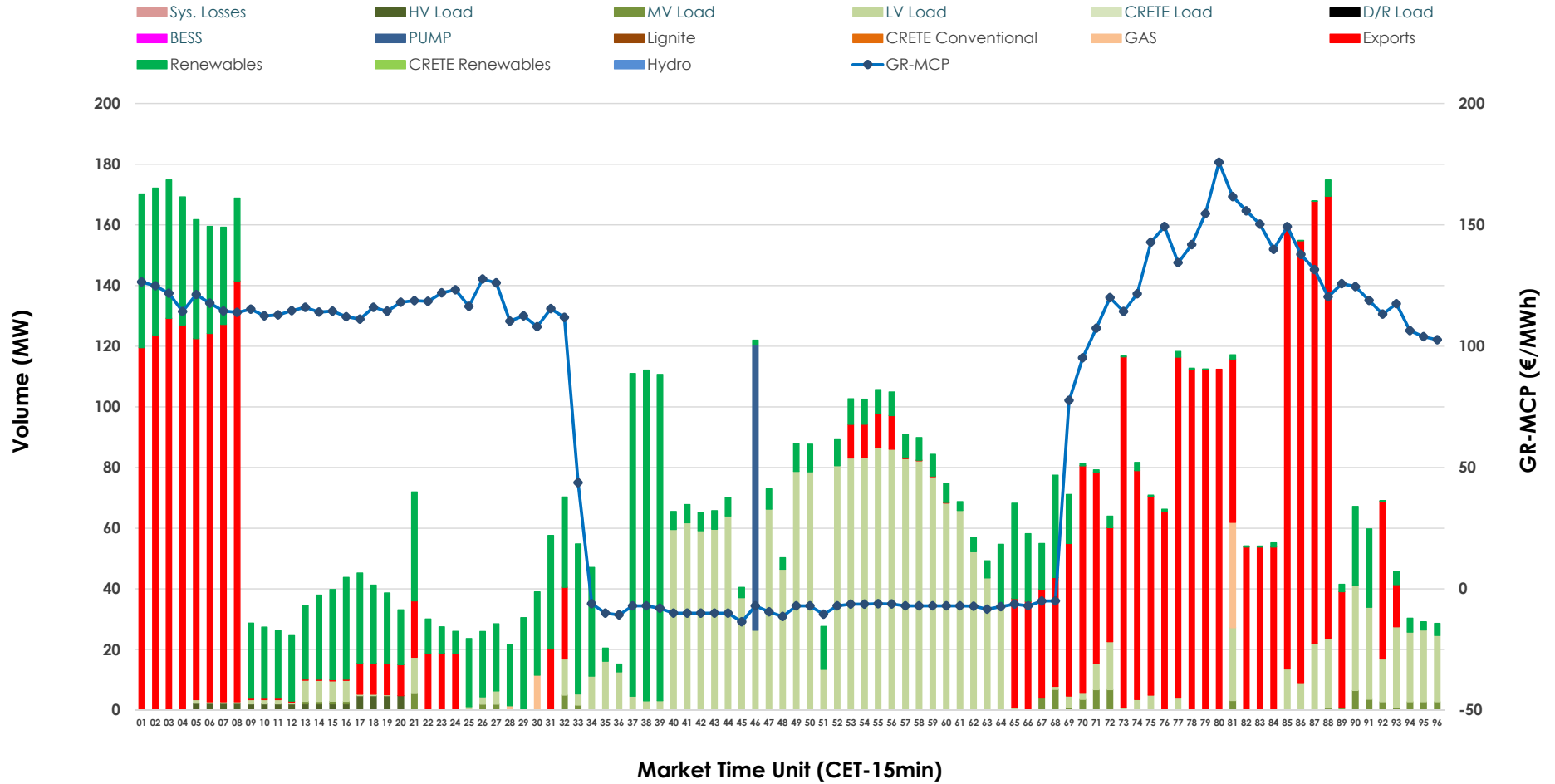


IDA '2' Market Outlook

17.04.2026 IDA '2' Market - Sell



17.04.2026 IDA '2' Market - Buy



GR Bidding Zone Weekly Figures

Delivery Day	11.04	12.04	13.04	14.04	15.04	16.04	17.04
	👇 -8%	👇 -2%	👆 20%	👆 41%	👇 -8%		
Avg.MCP (€/MWh)	83.63	82.08	98.24	138.59	126.89	N/M	73.93
Max.MCP (€/MWh)	185.88	162.77	164.38	261.33	188.32	N/M	175.78
Min.MCP (€/MWh)	-16.65	-12.45	2.00	86.61	82.00	N/M	-13.57
	➡ 0%	👆 8%	👆 43%	👇 -51%	👆 167%		
Tot.Vol(GWh)	3.71	4.02	5.74	2.78	7.43	N/M	3.62

Trades by Order Type

Delivery Day		11.04	12.04	13.04	14.04	15.04	16.04	17.04	
Ord Price Type		Sell & Buy Trades in (GWh) per Price Type							(%)
PPT	(S)	0.000	0.000	0.000	0.000	0.000		0.000	0.00%
HBD	(S)	0.785	1.311	1.800	0.620	1.018		1.163	64.32%
BLK	(S)	0.000	0.000	0.000	0.000	0.000		0.000	0.00%
CPL	(S)	1.070	0.700	1.070	0.772	2.700		0.645	35.68%
PPT	(B)	0.000	0.000	0.000	0.000	0.000		0.000	0.00%
HBD	(B)	1.370	1.149	1.419	1.141	1.789		0.995	55.03%
BLK	(B)	0.000	0.000	0.000	0.000	0.000		0.000	0.00%
CPL	(B)	0.485	0.862	1.450	0.252	1.929		0.813	44.97%
		Sell & Buy Orders Traded per Price Type							(%)
PPT	(S)	0	0	0	0	0		0	0.00%
HBD	(S)	205	369	370	197	188		234	100.00%
BLK	(S)	0	0	0	0	0		0	0.00%
PPT	(B)	0	0	0	0	0		0	0.00%
HBD	(B)	633	571	448	369	479		335	100.00%
BLK	(B)	0	0	0	0	0		0	0.00%

- MCP** Market Clearing Price (€/MWh)
- PPT** Priority Price-Taking
- HBD** Hybrid
- BLK** Block
- CPL** Market Coupling Flow

Trade's Volume Mix

	Sell - MWh	Buy - MWh	
Lignite (0.0%)	0	0	(0.0%)
Crete Conv. (0.0%)	0	0	(0.0%)
Gas (4.1%)	74	12	(0.7%)
Hydro (0.0%)	0	0	(0.0%)
Imports (35.7%)	645		
RES (40.2%)	726	427	(23.6%)
Crete RES (0.0%)	0	0	(0.0%)
BESS (0.0%)	0	0	(0.0%)
HV Load (1.8%)	33	11	(0.6%)
MV Load (2.7%)	48	19	(1.0%)
LV Load (15.6%)	282	503	(27.8%)
Crete Load (0.0%)	0	0	(0.0%)
Pumping (0.0%)	0	23	(1.3%)
Exports		813	(45.0%)
Sys.Losses (0.0%)	0	0	(0.0%)
D/R Load (0.0%)	0	0	(0.0%)

