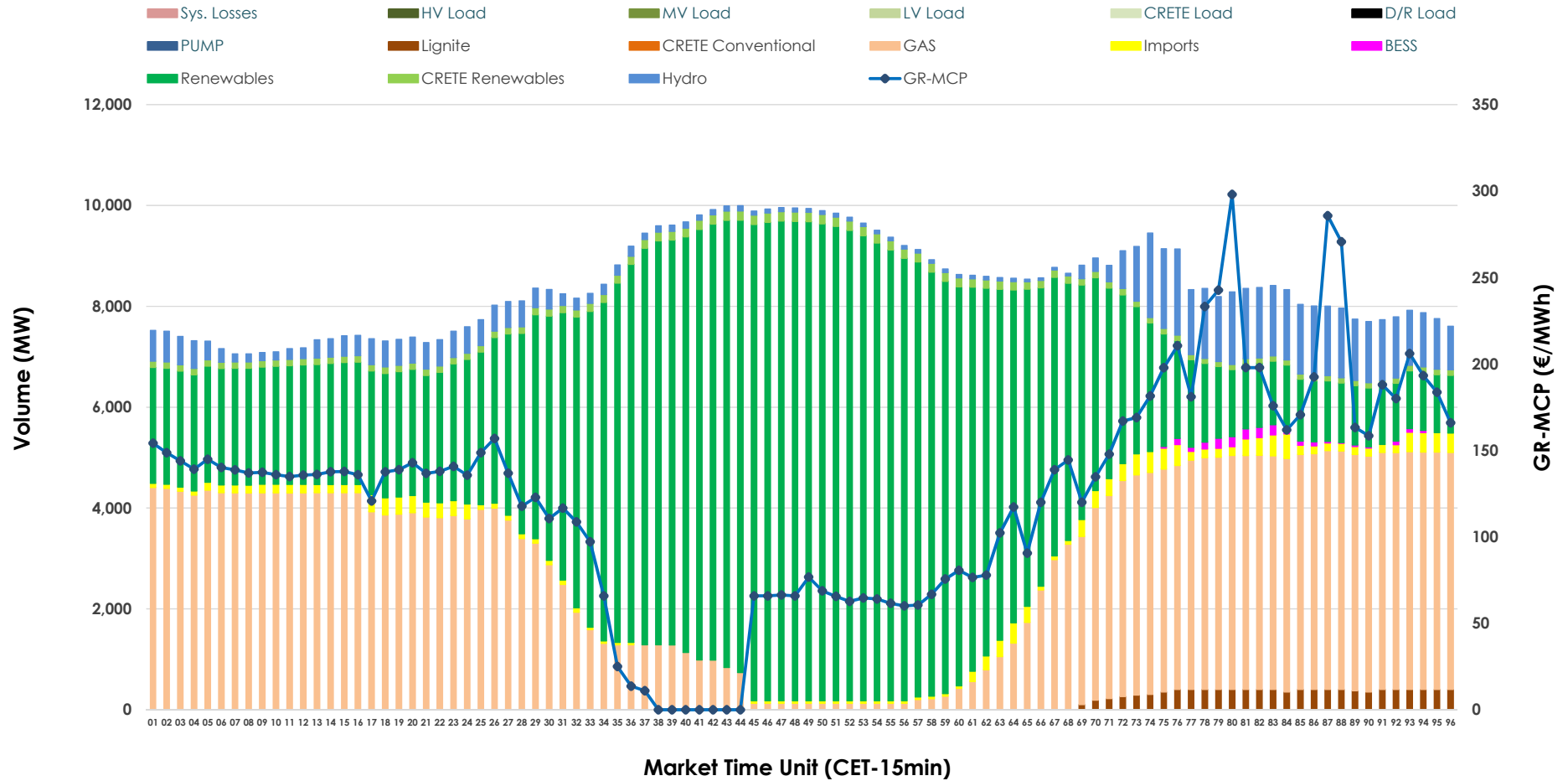


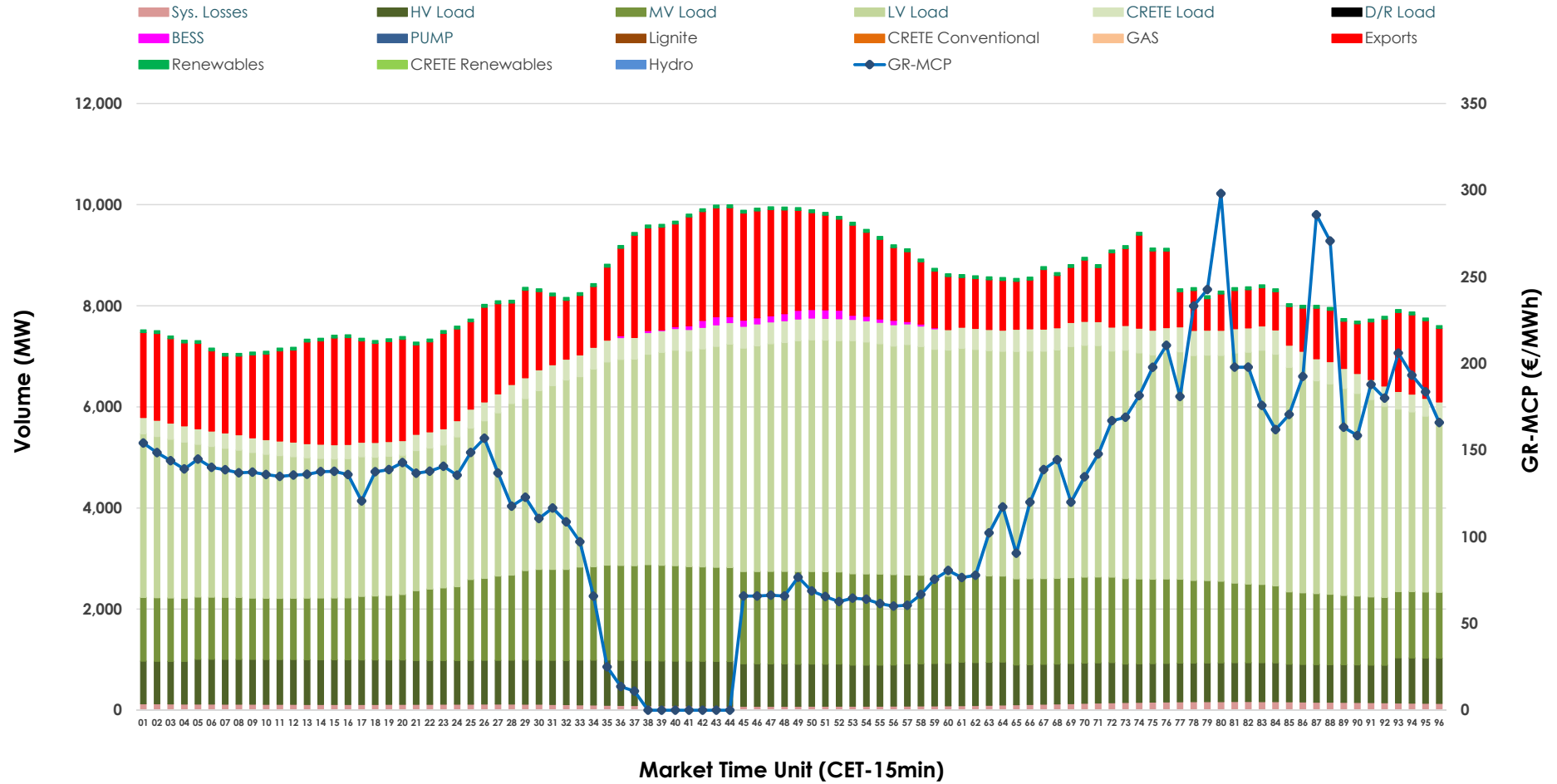


# Day-Ahead Market Outlook

23.06.2026 Day-Ahead Market - Sell



### 23.06.2026 Day-Ahead Market - Buy



### GR Bidding Zone Weekly Figures

Delivery Day	17.06	18.06	19.06	20.06	21.06	22.06	23.06
	↗ 18%	↘ -36%	↗ 0%	↘ -10%	↘ -1%	↗ 21%	↗ 49%
<b>Avg.MCP (€/MWh)</b>	119.31	76.83	76.84	69.40	68.43	82.87	123.69
<b>Max.MCP (€/MWh)</b>	185.46	170.45	150.05	143.77	145.91	191.08	298.03
<b>Min.MCP (€/MWh)</b>	36.53	-0.01	-0.01	-0.02	-1.00	-0.01	0.00
	↗ 0%	↗ 15%	↗ 1%	↘ -5%	↘ -3%	↗ 10%	↗ 1%
<b>Tot.Vol(GWh)</b>	340.24	391.22	394.14	373.56	360.69	398.29	403.96

### Trades by Order Type

Delivery Day		17.06	18.06	19.06	20.06	21.06	22.06	23.06	
<b>Ord Price Type</b>		<b>Sell &amp; Buy Trades in (GWh) per Price Type</b>							<b>(%)</b>
<b>PPT</b>	(S)	57.588	76.033	82.897	83.379	83.637	81.817	71.841	35.57%
<b>HBD</b>	(S)	69.566	86.738	84.108	75.272	67.229	87.242	90.967	45.04%
<b>BLK</b>	(S)	33.077	32.840	30.010	28.129	29.177	29.167	37.544	18.59%
<b>CPL</b>	(S)	9.890	0.000	0.053	0.000	0.303	0.919	1.628	0.81%
<b>PPT</b>	(B)	16.785	16.742	17.703	17.500	16.256	17.878	17.854	8.84%
<b>HBD</b>	(B)	146.808	152.368	152.606	141.182	132.687	155.517	162.194	80.30%
<b>BLK</b>	(B)	0.000	0.000	0.000	0.000	0.000	0.000	0.000	0.00%
<b>CPL</b>	(B)	6.527	26.501	26.758	28.098	31.403	25.750	21.932	10.86%
		<b>Sell &amp; Buy Orders Traded per Price Type</b>							<b>(%)</b>
<b>PPT</b>	(S)	1618	1634	1607	1669	1654	1652	1668	30.70%
<b>HBD</b>	(S)	3804	3357	3327	3083	2836	3199	3750	69.01%
<b>BLK</b>	(S)	10	11	14	15	14	10	16	0.29%
<b>PPT</b>	(B)	2351	2371	2411	2407	2448	2443	2432	38.07%
<b>HBD</b>	(B)	3769	3993	4043	4044	3852	4013	3956	61.93%
<b>BLK</b>	(B)	0	0	0	0	0	0	0	0.00%

**MCP** Market Clearing Price (€/MWh)  
**PPT** Priority Price-Taking  
**HBD** Hybrid  
**BLK** Block  
**CPL** Market Coupling Flow

### Trade's Volume Mix

		Sell - MWh	Buy - MWh	
<b>Lignite</b>	(1.2%)	2,512	0	(0.0%)
<b>Crete Conv.</b>	(0.0%)	0	0	(0.0%)
<b>Gas</b>	(35.0%)	70,712	0	(0.0%)
<b>Hydro</b>	(6.1%)	12,370	0	(0.0%)
<b>Imports</b>	(2.0%)	4,100		
<b>RES</b>	(53.7%)	108,464	1,296	(0.6%)
<b>Crete RES</b>	(1.7%)	3,335	0	(0.0%)
<b>BESS</b>	(0.2%)	486	556	(0.3%)
<b>HV Load</b>	(0.0%)	0	20,081	(9.9%)
<b>MV Load</b>	(0.0%)	0	37,910	(18.8%)
<b>LV Load</b>	(0.0%)	0	93,464	(46.3%)
<b>Crete Load</b>	(0.0%)	0	9,553	(4.7%)
<b>Pumping</b>	(0.0%)	0	0	(0.0%)
<b>Exports</b>			36,254	(17.9%)
<b>Sys.Losses</b>	(0.0%)	0	2,865	(1.4%)
<b>D/R Load</b>	(0.0%)	0	0	(0.0%)

