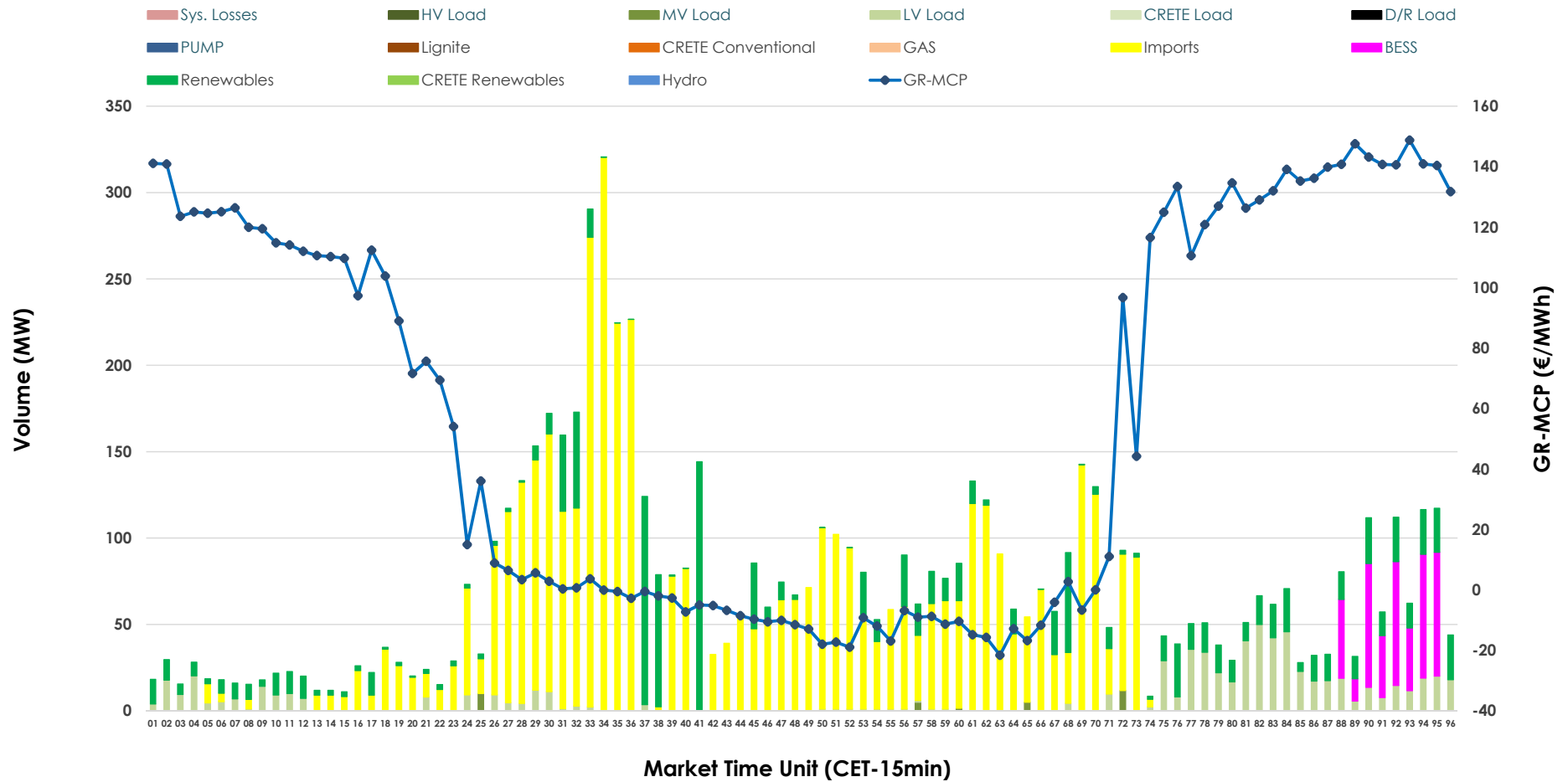


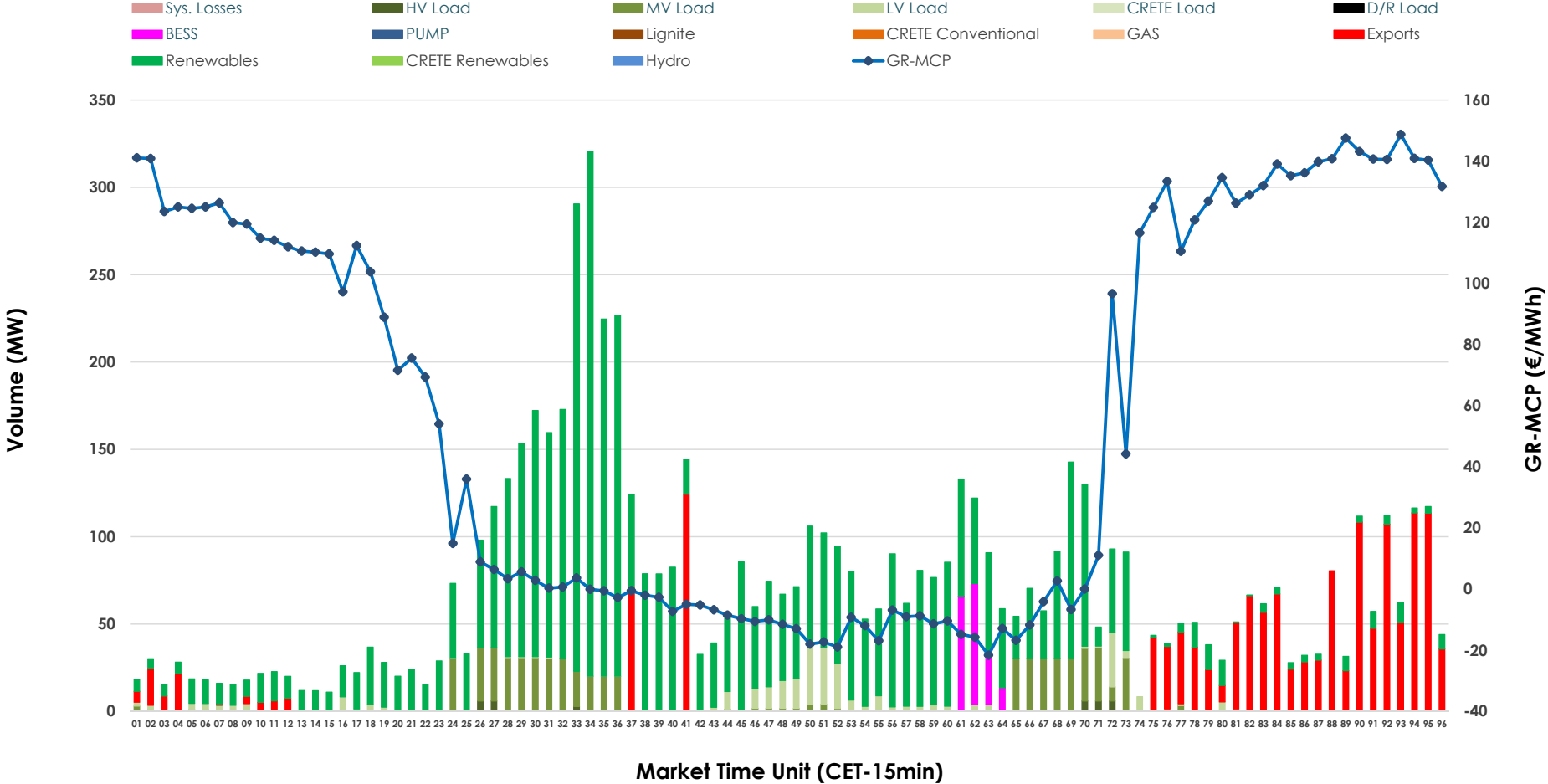


# IDA '2' Market Outlook

07.06.2026 IDA '2' Market - Sell



### 07.06.2026 IDA '2' Market - Buy



### GR Bidding Zone Weekly Figures

Delivery Day	01.06	02.06	03.06	04.06	05.06	06.06	07.06
	↗ 20%	↘ -7%	↘ -10%	↗ 2%	↗ 26%	↘ -28%	↘ -29%
<b>Avg.MCP (€/MWh)</b>	103.88	96.79	86.72	88.19	111.27	80.15	56.96
<b>Max.MCP (€/MWh)</b>	212.74	173.58	155.00	210.77	181.27	152.78	148.74
<b>Min.MCP (€/MWh)</b>	-6.67	0.75	-10.47	0.00	30.63	-10.82	-21.61
	↗ 35%	↗ 37%	↘ -49%	↗ 13%	↘ -9%	↗ 74%	↘ -33%
<b>Tot.Vol(GWh)</b>	4.24	5.80	2.94	3.33	3.03	5.28	3.53

### Trades by Order Type

Delivery Day		01.06	02.06	03.06	04.06	05.06	06.06	07.06	
Ord Price Type		Sell & Buy Trades in (GWh) per Price Type							(%)
<b>PPT</b>	(S)	0.000	0.000	0.000	0.000	0.000	0.000	0.000	0.00%
<b>HBD</b>	(S)	1.649	1.793	1.455	0.958	0.948	1.595	0.633	35.91%
<b>BLK</b>	(S)	0.000	0.000	0.000	0.000	0.000	0.000	0.000	0.00%
<b>CPL</b>	(S)	0.472	1.107	0.016	0.707	0.570	1.045	1.130	64.09%
<b>PPT</b>	(B)	0.000	0.000	0.000	0.000	0.000	0.000	0.000	0.00%
<b>HBD</b>	(B)	1.661	2.573	1.302	1.332	1.114	2.207	1.399	79.36%
<b>BLK</b>	(B)	0.000	0.000	0.000	0.000	0.000	0.000	0.000	0.00%
<b>CPL</b>	(B)	0.459	0.327	0.170	0.333	0.404	0.434	0.364	20.64%
		Sell & Buy Orders Traded per Price Type							(%)
<b>PPT</b>	(S)	0	0	0	0	0	0	0	0.00%
<b>HBD</b>	(S)	321	335	226	210	232	393	223	100.00%
<b>BLK</b>	(S)	0	0	0	0	0	0	0	0.00%
<b>PPT</b>	(B)	0	0	0	0	0	0	0	0.00%
<b>HBD</b>	(B)	592	736	418	380	483	655	539	100.00%
<b>BLK</b>	(B)	0	0	0	0	0	0	0	0.00%

- MCP** Market Clearing Price (€/MWh)
- PPT** Priority Price-Taking
- HBD** Hybrid
- BLK** Block
- CPL** Market Coupling Flow

### Trade's Volume Mix

	Sell - MWh	Buy - MWh	
<b>Lignite</b> (0.0%)	0	0	(0.0%)
<b>Crete Conv.</b> (0.0%)	0	0	(0.0%)
<b>Gas</b> (0.0%)	0	0	(0.0%)
<b>Hydro</b> (0.0%)	0	0	(0.0%)
<b>Imports</b> (64.1%)	1,130		
<b>RES</b> (19.4%)	342	1,117	(63.3%)
<b>Crete RES</b> (0.0%)	0	0	(0.0%)
<b>BESS</b> (5.9%)	104	44	(2.5%)
<b>HV Load</b> (0.0%)	0	8	(0.5%)
<b>MV Load</b> (0.5%)	8	155	(8.8%)
<b>LV Load</b> (10.1%)	179	76	(4.3%)
<b>Crete Load</b> (0.0%)	0	0	(0.0%)
<b>Pumping</b> (0.0%)	0	0	(0.0%)
<b>Exports</b>		364	(20.6%)
<b>Sys.Losses</b> (0.0%)	0	0	(0.0%)
<b>D/R Load</b> (0.0%)	0	0	(0.0%)

