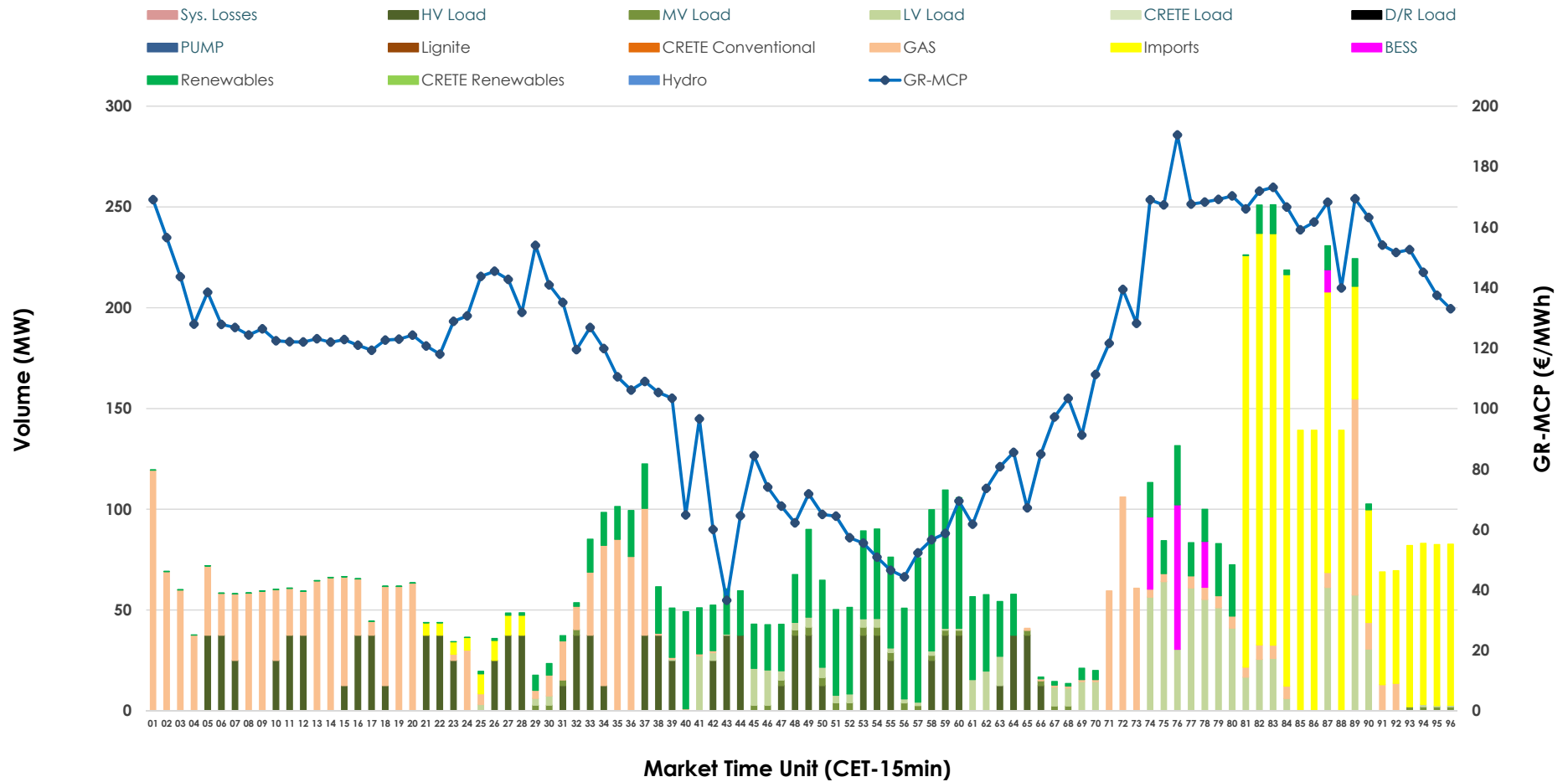


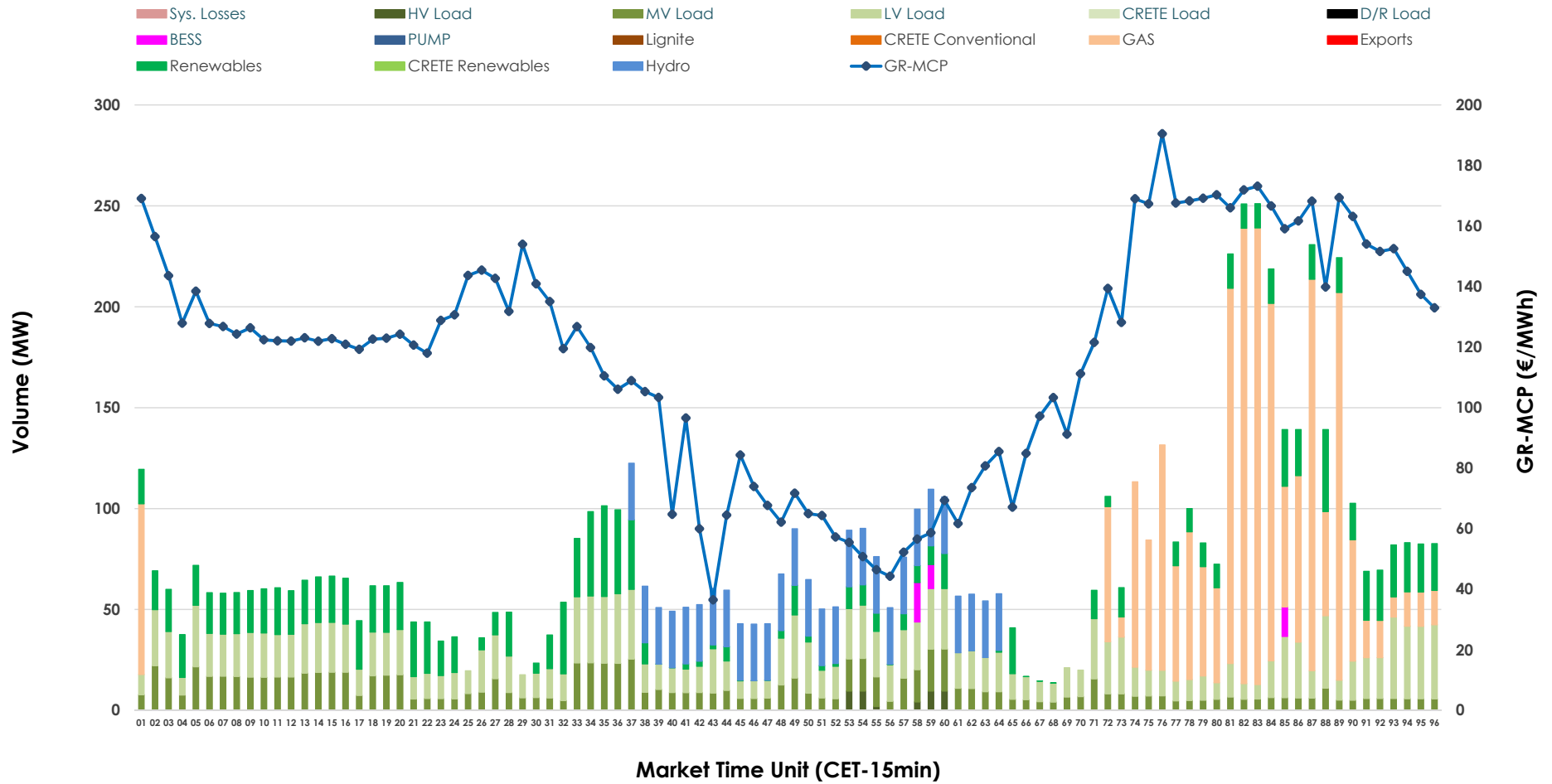


IDA '1' Market Outlook

17.06.2026 IDA '1' Market - Sell



17.06.2026 IDA '1' Market - Buy



GR Bidding Zone Weekly Figures

Delivery Day	11.06	12.06	13.06	14.06	15.06	16.06	17.06
	👇 -4%	👆 16%	👇 -57%	👆 25%	👆 39%	👆 15%	👆 18%
Avg.MCP (€/MWh)	99.61	115.33	49.72	62.03	86.15	99.34	117.09
Max.MCP (€/MWh)	171.71	176.30	166.27	185.00	177.42	167.00	190.46
Min.MCP (€/MWh)	14.37	68.99	-31.98	-6.20	-5.00	14.70	36.53
	👇 -7%	👆 2%	👆 56%	👇 -25%	👇 -40%	👆 83%	👇 -38%
Tot.Vol(GWh)	4.51	4.60	7.18	5.41	3.25	5.95	3.69

Trades by Order Type

Delivery Day		11.06	12.06	13.06	14.06	15.06	16.06	17.06	
Ord Price Type		Sell & Buy Trades in (GWh) per Price Type							(%)
PPT	(S)	0.000	0.000	0.000	0.000	0.000	0.000	0.000	0.00%
HBD	(S)	1.639	1.731	3.148	2.036	1.264	2.241	1.352	73.18%
BLK	(S)	0.000	0.000	0.000	0.000	0.000	0.000	0.000	0.00%
CPL	(S)	0.617	0.571	0.441	0.669	0.359	0.733	0.495	26.82%
PPT	(B)	0.000	0.000	0.000	0.000	0.000	0.000	0.000	0.00%
HBD	(B)	1.062	1.814	3.308	2.175	1.471	1.448	1.847	100.00%
BLK	(B)	0.000	0.000	0.000	0.000	0.000	0.000	0.000	0.00%
CPL	(B)	1.194	0.488	0.281	0.529	0.152	1.526	0.000	0.00%
		Sell & Buy Orders Traded per Price Type							(%)
PPT	(S)	0	0	0	0	0	0	0	0.00%
HBD	(S)	209	411	335	224	305	347	182	100.00%
BLK	(S)	0	0	0	0	0	0	0	0.00%
PPT	(B)	0	0	0	0	0	0	0	0.00%
HBD	(B)	639	749	739	681	633	589	880	100.00%
BLK	(B)	0	0	0	0	0	0	0	0.00%

- MCP** Market Clearing Price (€/MWh)
- PPT** Priority Price-Taking
- HBD** Hybrid
- BLK** Block
- CPL** Market Coupling Flow

Trade's Volume Mix

		Sell - MWh		Buy - MWh	
Lignite	(0.0%)	0	0	0	(0.0%)
Crete Conv.	(0.0%)	0	0	0	(0.0%)
Gas	(24.6%)	454	554		(30.0%)
Hydro	(0.0%)	0	196		(10.6%)
Imports	(26.8%)	495			
RES	(18.4%)	341	344		(18.6%)
Crete RES	(0.0%)	0	0		(0.0%)
BESS	(1.9%)	35	11		(0.6%)
HV Load	(16.2%)	300	11		(0.6%)
MV Load	(1.1%)	20	259		(14.0%)
LV Load	(10.9%)	202	472		(25.5%)
Crete Load	(0.0%)	0	0		(0.0%)
Pumping	(0.0%)	0	0		(0.0%)
Exports			0		(0.0%)
Sys.Losses	(0.0%)	0	0		(0.0%)
D/R Load	(0.0%)	0	0		(0.0%)

