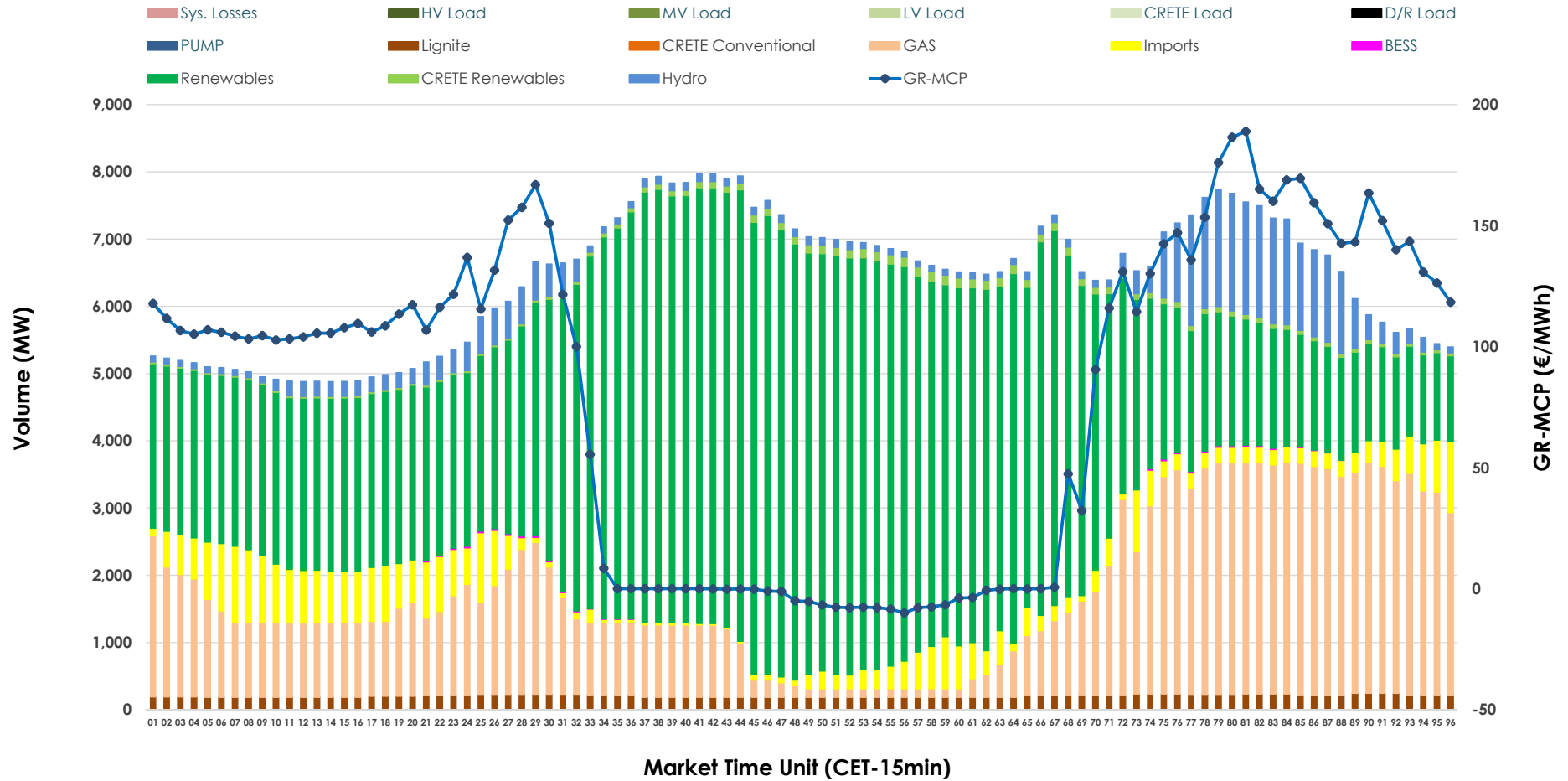


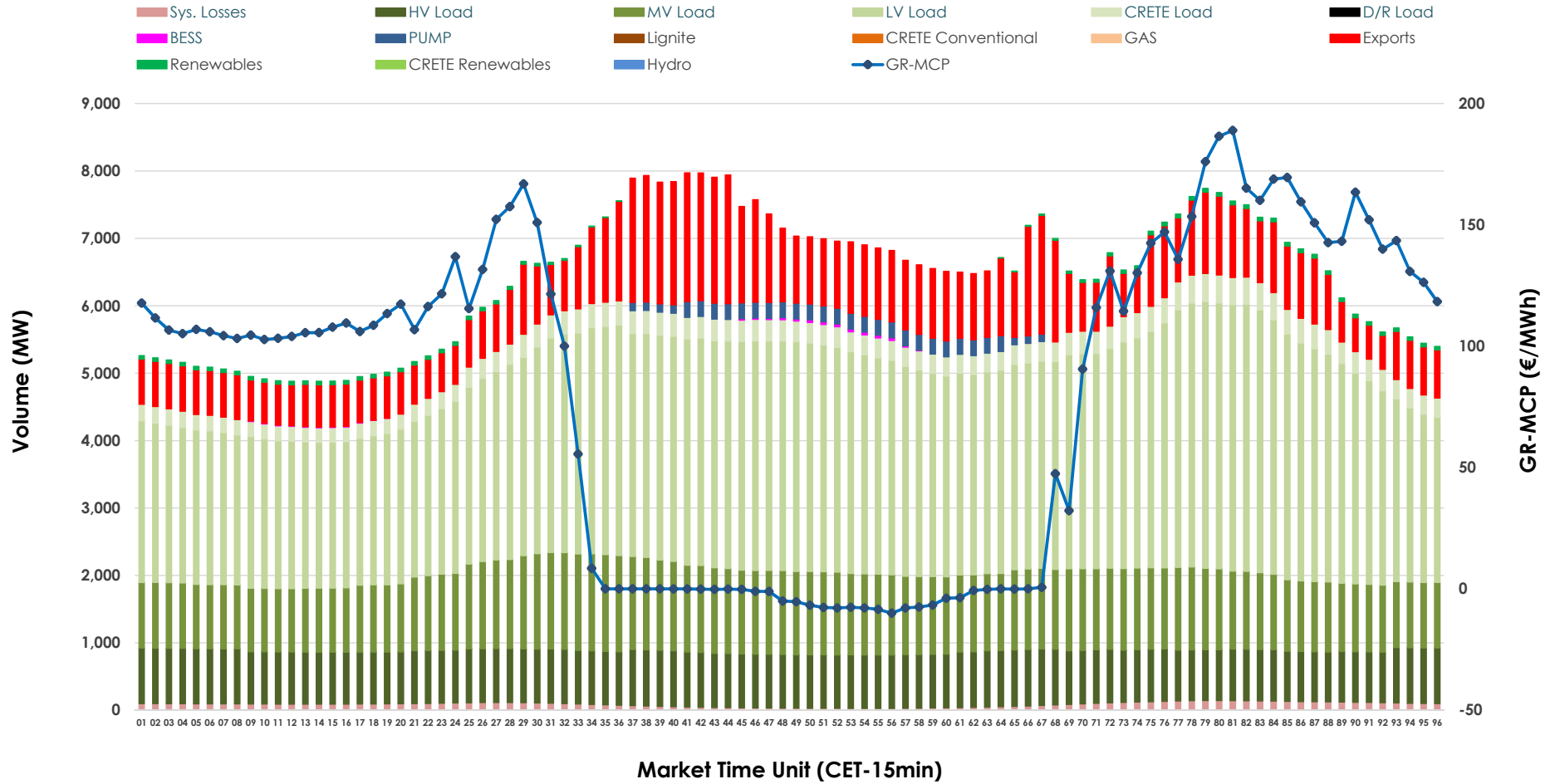


# Day-Ahead Market Outlook

08.04.2026 Day-Ahead Market - Sell



### 08.04.2026 Day-Ahead Market - Buy



### GR Bidding Zone Weekly Figures

Delivery Day	02.04	03.04	04.04	05.04	06.04	07.04	08.04
	👇 -12%	👇 -5%	👇 -46%	👇 -56%	👆 126%	👆 21%	👇 -6%
<b>Avg.MCP (€/MWh)</b>	136.58	129.62	70.29	31.16	70.35	85.32	80.41
<b>Max.MCP (€/MWh)</b>	196.93	215.54	187.56	141.02	185.89	204.50	188.91
<b>Min.MCP (€/MWh)</b>	105.00	22.09	0.00	-50.00	-25.02	-5.30	-10.00
	👉 0%	👇 -12%	👇 -8%	👇 -8%	👆 9%	👆 8%	👇 -3%
<b>Tot.Vol(GWh)</b>	360.02	318.52	292.69	269.89	294.16	316.70	308.22

### Trades by Order Type

Delivery Day		02.04	03.04	04.04	05.04	06.04	07.04	08.04	
Ord Price Type		Sell & Buy Trades in (GWh) per Price Type							(%)
<b>PPT</b>	(S)	68.739	50.740	54.159	67.826	55.691	50.282	57.974	37.62%
<b>HBD</b>	(S)	73.492	61.037	61.632	50.179	52.265	65.823	65.356	42.41%
<b>BLK</b>	(S)	33.560	36.198	15.314	9.239	12.305	26.897	23.861	15.48%
<b>CPL</b>	(S)	4.221	11.285	15.240	7.703	26.818	15.351	6.920	4.49%
<b>PPT</b>	(B)	14.608	13.665	13.285	12.273	13.969	14.822	14.696	9.54%
<b>HBD</b>	(B)	151.077	140.527	128.816	118.500	131.370	133.078	129.253	83.87%
<b>BLK</b>	(B)	0.000	0.000	0.000	0.000	0.000	0.000	0.000	0.00%
<b>CPL</b>	(B)	14.326	5.069	4.244	4.173	1.739	10.452	10.162	6.59%
		Sell & Buy Orders Traded per Price Type							(%)
<b>PPT</b>	(S)	1510	1522	1606	1579	1525	1462	1471	35.29%
<b>HBD</b>	(S)	3012	3159	2729	1986	2384	2864	2687	64.47%
<b>BLK</b>	(S)	16	16	6	8	9	12	10	0.24%
<b>PPT</b>	(B)	2271	2238	2222	2234	2307	2350	2364	36.50%
<b>HBD</b>	(B)	4170	4001	4119	4339	3974	4032	4113	63.50%
<b>BLK</b>	(B)	0	0	0	0	0	0	0	0.00%

**MCP** Market Clearing Price (€/MWh)  
**PPT** Priority Price-Taking  
**HBD** Hybrid  
**BLK** Block  
**CPL** Market Coupling Flow

### Trade's Volume Mix

	Sell - MWh	Buy - MWh	
<b>Lignite</b> (3.2%)	4,911	0	(0.0%)
<b>Crete Conv.</b> (0.0%)	0	0	(0.0%)
<b>Gas</b> (24.7%)	38,058	0	(0.0%)
<b>Hydro</b> (5.9%)	9,163	0	(0.0%)
<b>Imports</b> (6.4%)	9,886		
<b>RES</b> (58.6%)	90,239	797	(0.5%)
<b>Crete RES</b> (1.1%)	1,716	0	(0.0%)
<b>BESS</b> (0.1%)	139	134	(0.1%)
<b>HV Load</b> (0.0%)	0	19,022	(12.3%)
<b>MV Load</b> (0.0%)	0	27,685	(18.0%)
<b>LV Load</b> (0.0%)	0	72,275	(46.9%)
<b>Crete Load</b> (0.0%)	0	7,332	(4.8%)
<b>Pumping</b> (0.0%)	0	1,618	(1.0%)
<b>Exports</b>		23,189	(15.0%)
<b>Sys.Losses</b> (0.0%)	0	2,058	(1.3%)
<b>D/R Load</b> (0.0%)	0	0	(0.0%)

