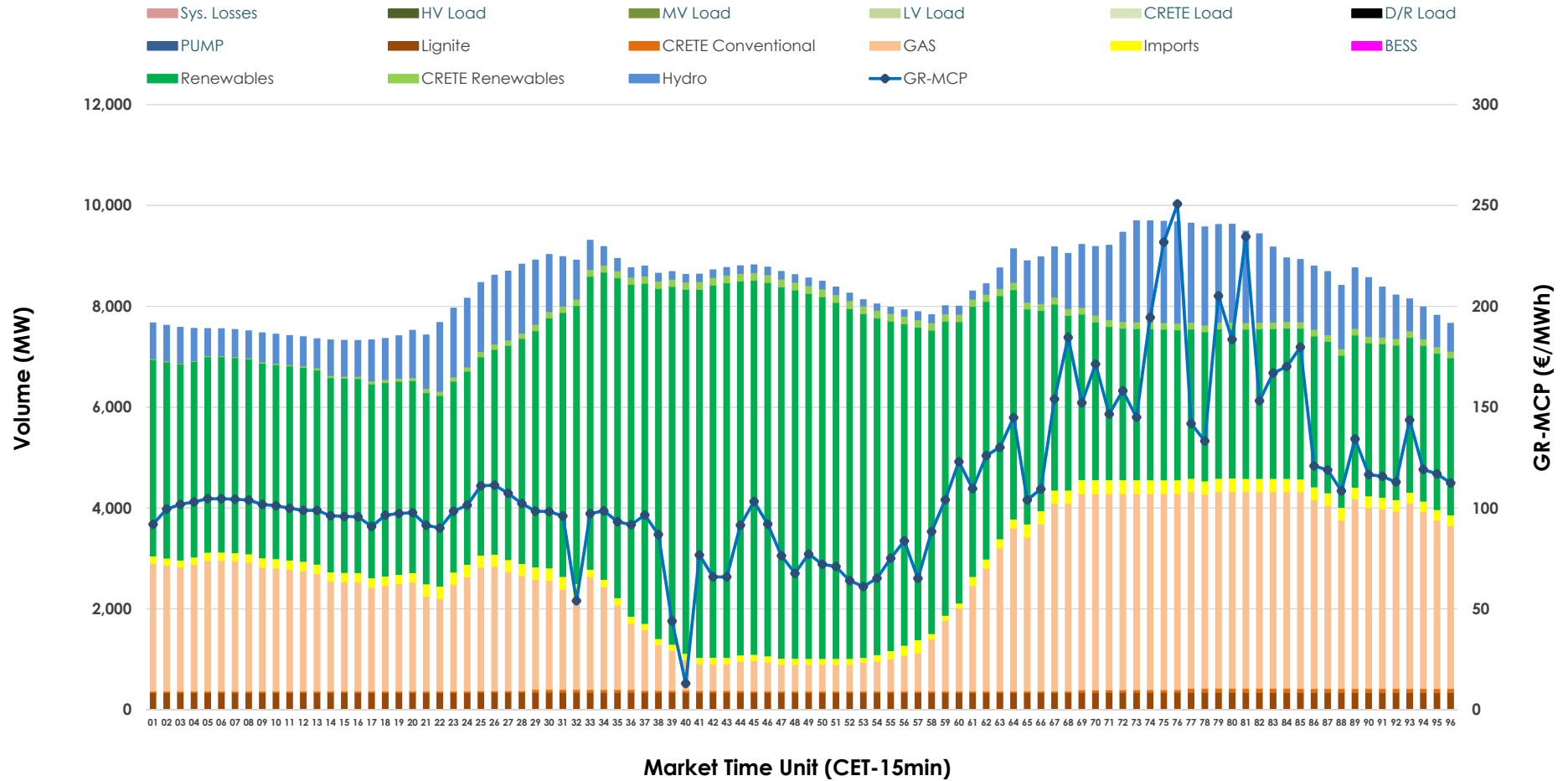


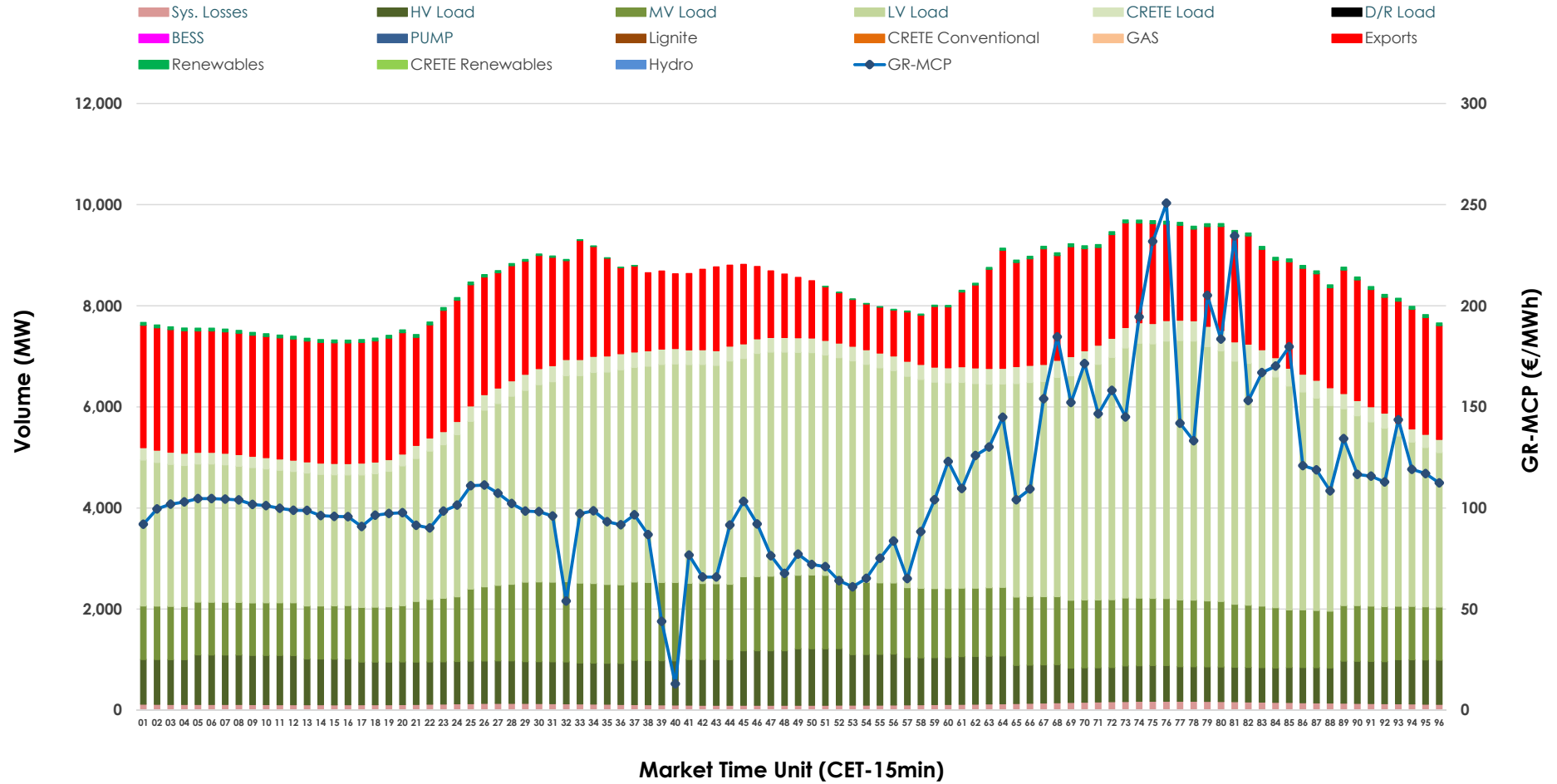


Day-Ahead Market Outlook

20.03.2026 Day-Ahead Market - Sell



20.03.2026 Day-Ahead Market - Buy



GR Bidding Zone Weekly Figures

Delivery Day	14.03	15.03	16.03	17.03	18.03	19.03	20.03
	↓ -6%	↓ -1%	↗ 20%	↗ 16%	↓ -22%	↗ 11%	↗ 11%
Avg.MCP (€/MWh)	84.39	83.39	100.39	116.20	90.85	101.23	112.04
Max.MCP (€/MWh)	183.48	164.03	199.21	212.05	167.11	219.70	250.73
Min.MCP (€/MWh)	-6.30	-1.01	11.01	40.40	3.88	3.34	13.00
	↓ -4%	↓ -6%	↗ 4%	↗ 17%	→ 0%	↓ -2%	↗ 5%
Tot.Vol(GWh)	346.25	324.10	338.55	395.97	395.77	386.01	405.85

Trades by Order Type

Delivery Day		14.03	15.03	16.03	17.03	18.03	19.03	20.03	
Ord Price Type		Sell & Buy Trades in (GWh) per Price Type							(%)
PPT	(S)	81.903	74.010	71.660	84.654	94.196	93.438	96.577	47.59%
HBD	(S)	63.501	60.076	63.406	76.425	69.505	74.421	78.081	38.48%
BLK	(S)	27.207	27.936	29.721	36.898	28.203	20.366	28.178	13.89%
CPL	(S)	0.515	0.029	4.488	0.007	5.982	4.778	0.092	0.05%
PPT	(B)	14.168	12.939	13.684	14.050	13.302	13.670	13.501	6.65%
HBD	(B)	131.135	118.547	136.429	147.286	150.765	153.841	153.779	75.78%
BLK	(B)	0.000	0.000	0.000	0.000	0.000	0.000	0.000	0.00%
CPL	(B)	27.823	30.565	19.163	36.648	33.819	25.492	35.647	17.57%
		Sell & Buy Orders Traded per Price Type							(%)
PPT	(S)	1847	1792	1814	1949	1927	2001	2050	40.10%
HBD	(S)	2666	2723	3131	3142	2970	3003	3049	59.64%
BLK	(S)	12	12	10	21	12	8	13	0.25%
PPT	(B)	2364	2341	2255	2260	2251	2246	2233	35.46%
HBD	(B)	3996	3981	3949	4043	4238	4109	4064	64.54%
BLK	(B)	0	0	0	0	0	0	0	0.00%

MCP Market Clearing Price (€/MWh)
PPT Priority Price-Taking
HBD Hybrid
BLK Block
CPL Market Coupling Flow

Trade's Volume Mix

		Sell - MWh	Buy - MWh	
Lignite	(4.0%)	8,194	0	(0.0%)
Crete Conv.	(0.6%)	1,120	0	(0.0%)
Gas	(28.0%)	56,797	0	(0.0%)
Hydro	(9.6%)	19,380	0	(0.0%)
Imports	(2.4%)	4,787		
RES	(54.1%)	109,876	900	(0.4%)
Crete RES	(1.4%)	2,773	0	(0.0%)
BESS	(0.0%)	0	0	(0.0%)
HV Load	(0.0%)	0	20,659	(10.2%)
MV Load	(0.0%)	0	31,109	(15.3%)
LV Load	(0.0%)	0	92,788	(45.7%)
Crete Load	(0.0%)	0	7,240	(3.6%)
Pumping	(0.0%)	0	0	(0.0%)
Exports			47,188	(23.3%)
Sys.Losses	(0.0%)	0	3,043	(1.5%)
D/R Load	(0.0%)	0	0	(0.0%)

