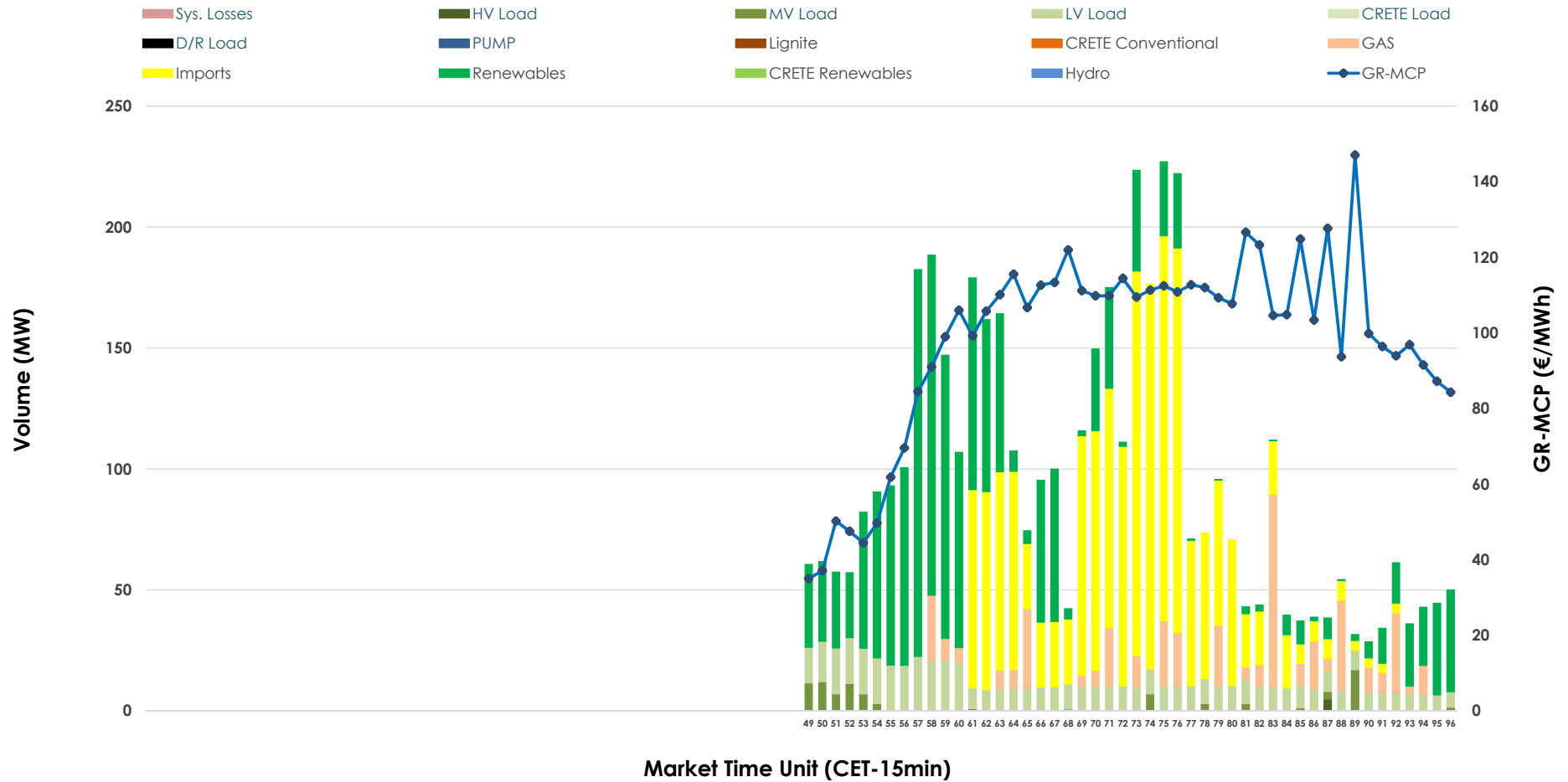


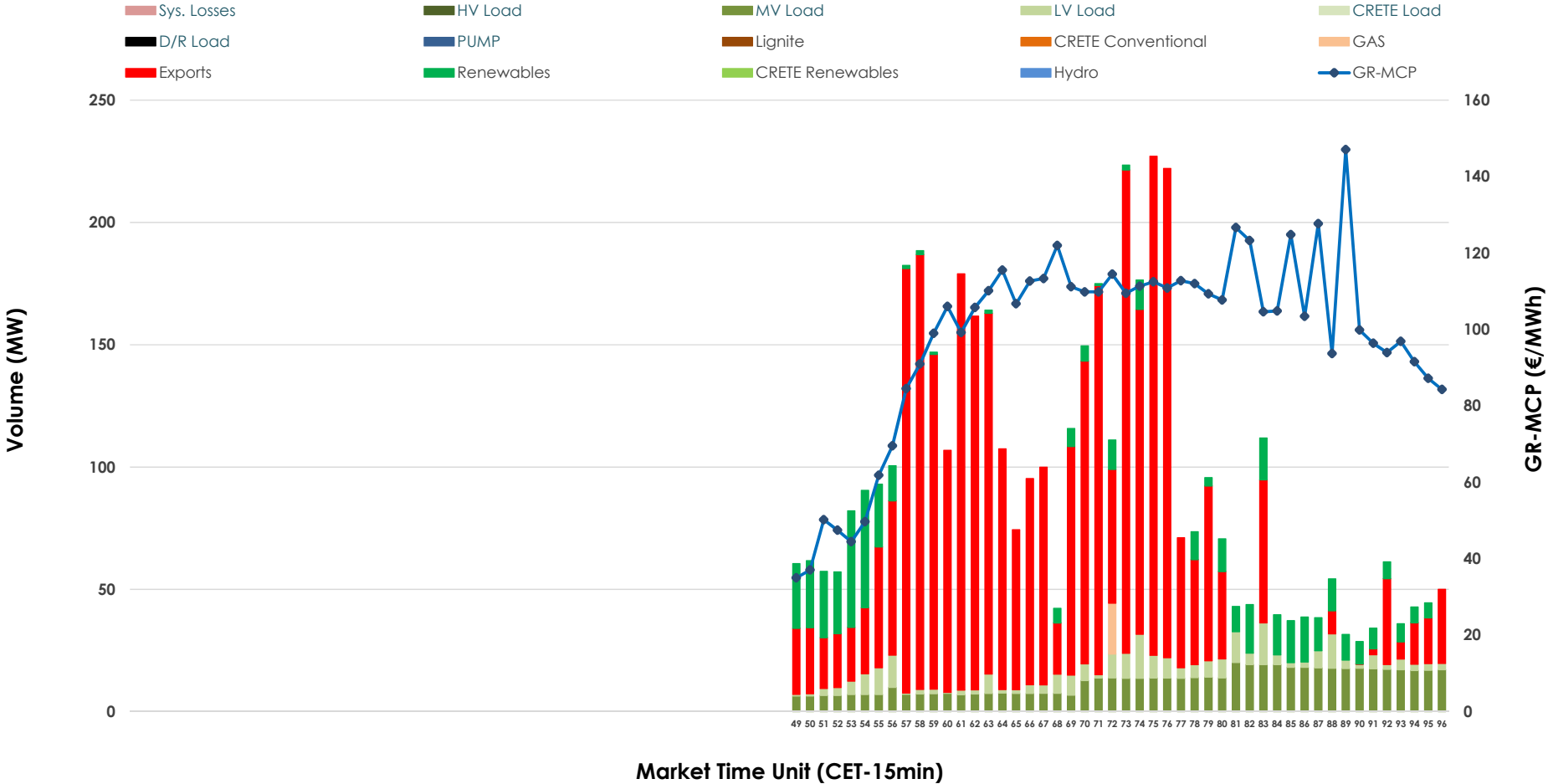


# IDA '3' Market Outlook

30.12.2025 IDA '3' Market - Sell



### 30.12.2025 IDA '3' Market - Buy



### GR Bidding Zone Weekly Figures

Delivery Day	24.12	25.12	26.12	27.12	28.12	29.12	30.12
	👇 -31%	👆 8%	👆 4%	👇 -10%	👇 -6%	👆 30%	👇 -17%
<b>Avg.MCP (€/MWh)</b>	95.98	103.44	107.76	97.17	90.92	118.21	97.88
<b>Max.MCP (€/MWh)</b>	162.40	120.06	124.35	137.20	125.61	170.91	147.05
<b>Min.MCP (€/MWh)</b>	51.36	84.94	86.95	25.00	14.61	76.36	35.00
	👆 127%	👆 18%	👆 44%	👇 -56%	👆 48%	👇 -51%	👆 88%
<b>Tot.Vol(GWh)</b>	2.24	2.64	3.81	1.68	2.50	1.22	2.30

### Trades by Order Type

Delivery Day		24.12	25.12	26.12	27.12	28.12	29.12	30.12	
<b>Ord Price Type</b>		<b>Sell &amp; Buy Trades in (GWh) per Price Type</b>							<b>(%)</b>
<b>PPT</b>	(S)	0.000	0.000	0.000	0.000	0.000	0.000	0.000	0.00%
<b>HBD</b>	(S)	1.058	1.121	1.364	0.658	1.209	0.427	0.688	59.84%
<b>BLK</b>	(S)	0.000	0.000	0.000	0.000	0.000	0.000	0.000	0.00%
<b>CPL</b>	(S)	0.061	0.201	0.541	0.182	0.038	0.184	0.462	40.16%
<b>PPT</b>	(B)	0.000	0.000	0.000	0.000	0.000	0.000	0.000	0.00%
<b>HBD</b>	(B)	0.294	0.421	0.353	0.596	0.201	0.396	0.344	29.93%
<b>BLK</b>	(B)	0.000	0.000	0.000	0.000	0.000	0.000	0.000	0.00%
<b>CPL</b>	(B)	0.825	0.902	1.552	0.245	1.047	0.214	0.805	70.07%
		<b>Sell &amp; Buy Orders Traded per Price Type</b>							<b>(%)</b>
<b>PPT</b>	(S)	0	0	0	0	0	0	0	0.00%
<b>HBD</b>	(S)	215	211	246	268	218	139	219	100.00%
<b>BLK</b>	(S)	0	0	0	0	0	0	0	0.00%
<b>PPT</b>	(B)	0	0	0	0	0	0	0	0.00%
<b>HBD</b>	(B)	120	132	84	150	143	215	187	100.00%
<b>BLK</b>	(B)	0	0	0	0	0	0	0	0.00%

**MCP** Market Clearing Price (€/MWh)  
**PPT** Priority Price-Taking  
**HBD** Hybrid  
**BLK** Block  
**CPL** Market Coupling Flow

### Trade's Volume Mix

		Sell - MWh	Buy - MWh	
<b>Lignite</b>	(0.0%)	0	0	(0.0%)
<b>Crete Conv.</b>	(0.0%)	0	0	(0.0%)
<b>Gas</b>	(9.7%)	111	5	(0.5%)
<b>Hydro</b>	(0.0%)	0	0	(0.0%)
<b>Imports</b>	(40.2%)	462		
<b>RES</b>	(35.9%)	413	125	(10.9%)
<b>Crete RES</b>	(0.0%)	0	0	(0.0%)
<b>HV Load</b>	(0.1%)	2	0	(0.0%)
<b>MV Load</b>	(1.9%)	22	147	(12.8%)
<b>LV Load</b>	(12.2%)	140	66	(5.8%)
<b>Crete Load</b>	(0.0%)	0	0	(0.0%)
<b>Pumping</b>	(0.0%)	0	0	(0.0%)
<b>Exports</b>			805	(70.1%)
<b>Sys.Losses</b>	(0.0%)	0	0	(0.0%)
<b>D/R Load</b>	(0.0%)	0	0	(0.0%)

