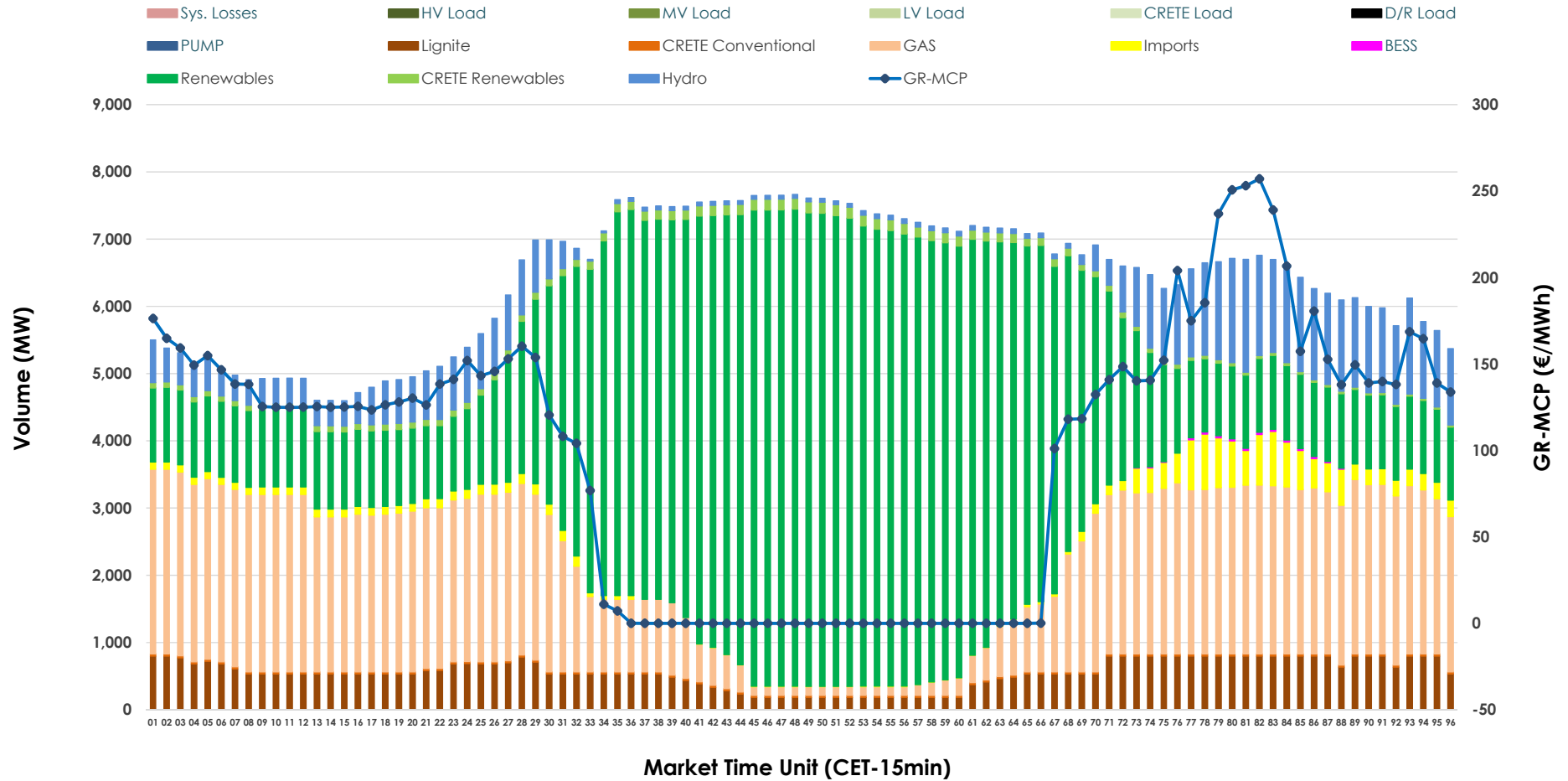


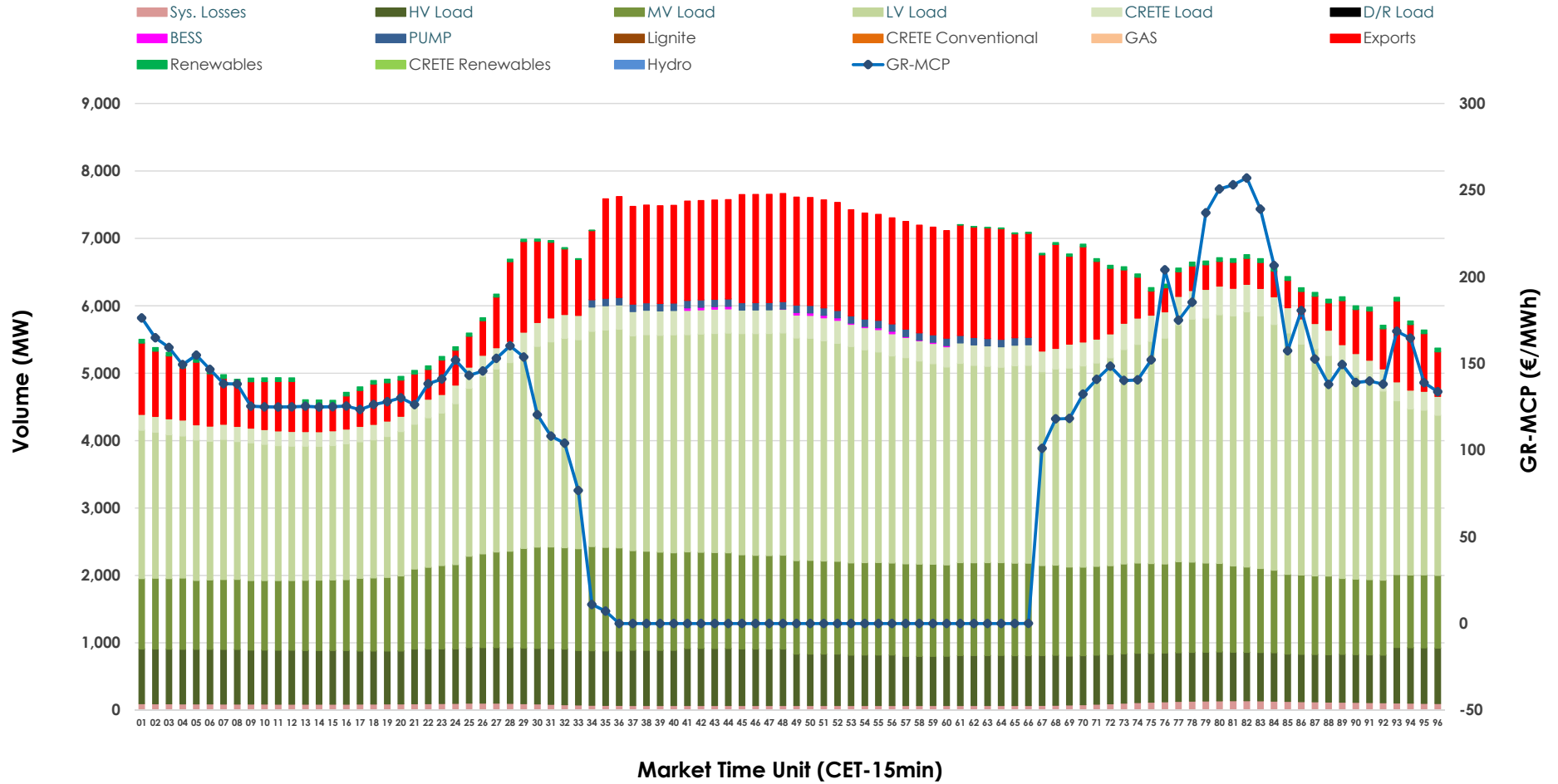


# Day-Ahead Market Outlook

05.05.2026 Day-Ahead Market - Sell



### 05.05.2026 Day-Ahead Market - Buy



### GR Bidding Zone Weekly Figures

Delivery Day	29.04	30.04	01.05	02.05	03.05	04.05	05.05
	↗ 28%	↘ -11%	↘ -37%	↗ 13%	↗ 11%	↗ 45%	↔ 0%
<b>Avg.MCP (€/MWh)</b>	97.01	86.43	54.50	61.40	68.20	98.94	98.73
<b>Max.MCP (€/MWh)</b>	223.89	213.40	120.80	182.68	172.97	263.41	257.05
<b>Min.MCP (€/MWh)</b>	-0.01	0.01	0.00	-5.00	-10.25	-0.10	-0.01
	↗ 0%	↘ -2%	↗ 5%	↗ 4%	↘ -2%	↗ 4%	↘ -1%
<b>Tot.Vol(GWh)</b>	285.20	280.87	294.18	304.64	299.12	311.19	307.32

### Trades by Order Type

Delivery Day		29.04	30.04	01.05	02.05	03.05	04.05	05.05	
Ord Price Type		Sell & Buy Trades in (GWh) per Price Type							(%)
<b>PPT</b>	(S)	50.135	49.397	70.948	77.082	71.520	59.921	56.144	36.54%
<b>HBD</b>	(S)	60.517	60.205	66.512	65.566	64.433	73.103	67.017	43.61%
<b>BLK</b>	(S)	31.075	23.319	9.630	9.306	13.409	21.897	29.691	19.32%
<b>CPL</b>	(S)	0.873	7.514	0.000	0.367	0.197	0.675	0.807	0.53%
<b>PPT</b>	(B)	12.132	12.191	13.282	14.496	13.234	15.057	14.815	9.64%
<b>HBD</b>	(B)	121.569	121.751	114.864	118.407	117.163	128.647	126.916	82.60%
<b>BLK</b>	(B)	0.000	0.000	0.000	0.000	0.000	0.000	0.000	0.00%
<b>CPL</b>	(B)	8.899	6.492	18.943	19.418	19.161	11.892	11.928	7.76%
		Sell & Buy Orders Traded per Price Type							(%)
<b>PPT</b>	(S)	1691	1674	1559	1484	1518	1552	1728	34.92%
<b>HBD</b>	(S)	3191	3352	2875	2577	2646	3146	3211	64.88%
<b>BLK</b>	(S)	15	9	9	8	9	13	10	0.20%
<b>PPT</b>	(B)	2311	2265	2294	2263	2266	2308	2296	35.58%
<b>HBD</b>	(B)	4038	4187	4191	3891	3942	4037	4157	64.42%
<b>BLK</b>	(B)	0	0	0	0	0	0	0	0.00%

- MCP** Market Clearing Price (€/MWh)
- PPT** Priority Price-Taking
- HBD** Hybrid
- BLK** Block
- CPL** Market Coupling Flow

### Trade's Volume Mix

	Sell - MWh	Buy - MWh	
<b>Lignite</b> (8.6%)	13,270	0	(0.0%)
<b>Crete Conv.</b> (0.5%)	720	0	(0.0%)
<b>Gas</b> (27.2%)	41,793	0	(0.0%)
<b>Hydro</b> (8.6%)	13,159	0	(0.0%)
<b>Imports</b> (2.6%)	4,056		
<b>RES</b> (50.9%)	78,216	774	(0.5%)
<b>Crete RES</b> (1.5%)	2,347	0	(0.0%)
<b>BESS</b> (0.1%)	97	115	(0.1%)
<b>HV Load</b> (0.0%)	0	18,635	(12.1%)
<b>MV Load</b> (0.0%)	0	30,645	(19.9%)
<b>LV Load</b> (0.0%)	0	68,833	(44.8%)
<b>Crete Load</b> (0.0%)	0	7,646	(5.0%)
<b>Pumping</b> (0.0%)	0	908	(0.6%)
<b>Exports</b>		23,879	(15.5%)
<b>Sys.Losses</b> (0.0%)	0	2,224	(1.4%)
<b>D/R Load</b> (0.0%)	0	0	(0.0%)

