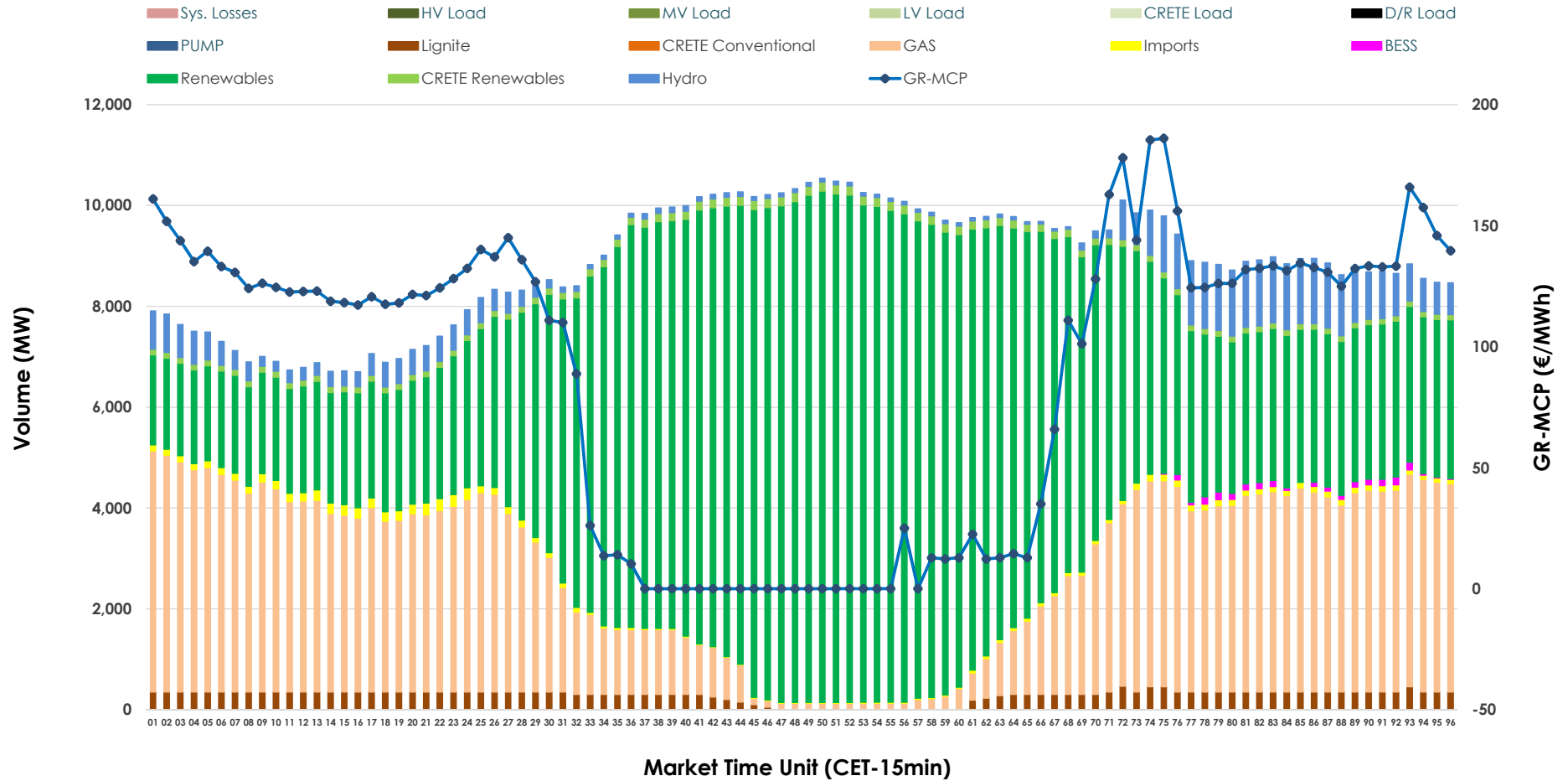


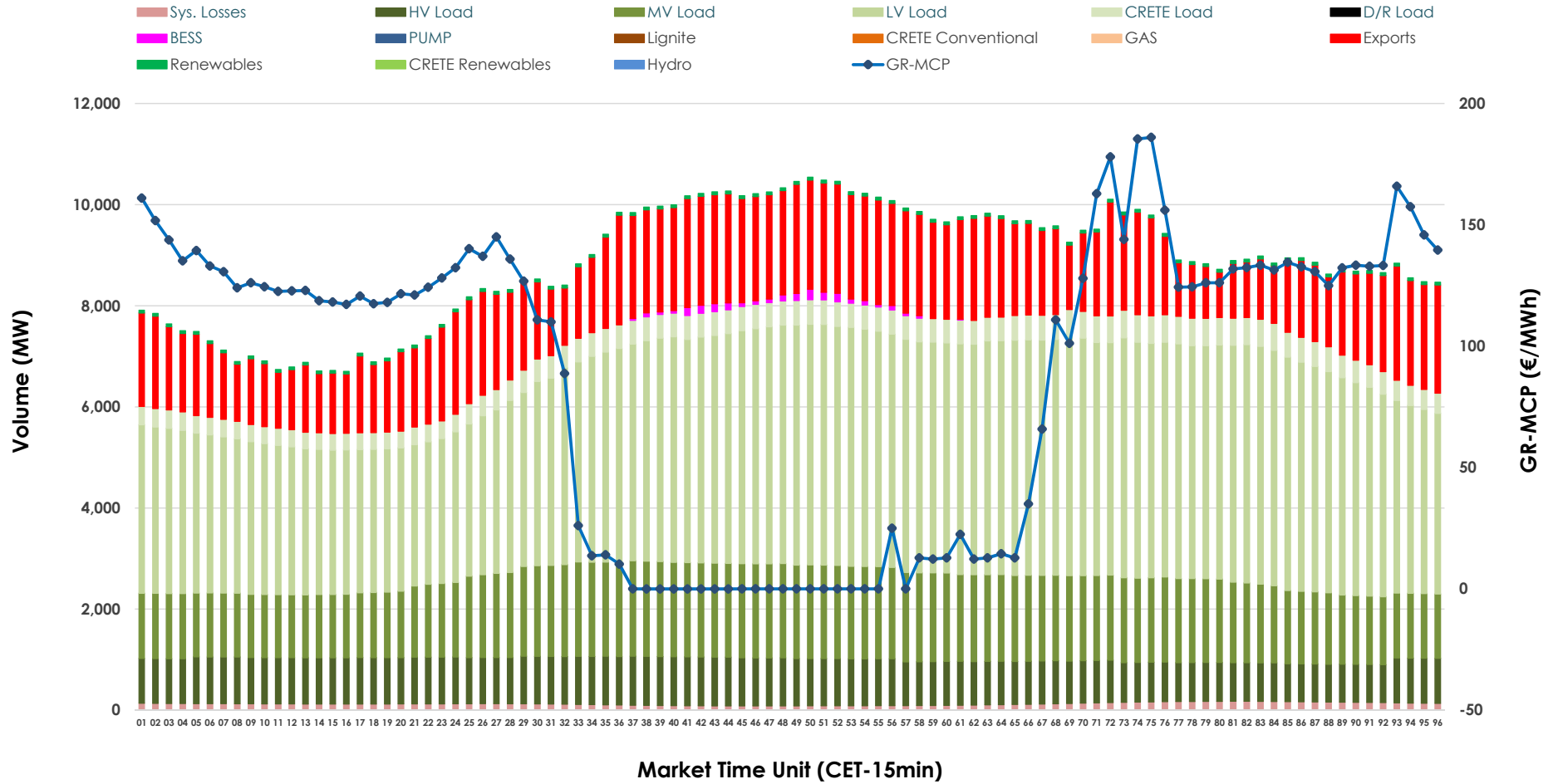


Day-Ahead Market Outlook

26.06.2026 Day-Ahead Market - Sell



26.06.2026 Day-Ahead Market - Buy



GR Bidding Zone Weekly Figures

Delivery Day	20.06	21.06	22.06	23.06	24.06	25.06	26.06
	👇 -10%	👇 -1%	👆 21%	👆 49%	👆 13%	👇 -13%	👇 -28%
Avg.MCP (€/MWh)	69.40	68.43	82.87	123.69	139.85	121.33	87.69
Max.MCP (€/MWh)	143.77	145.91	191.08	298.03	300.00	262.00	186.07
Min.MCP (€/MWh)	-0.02	-1.00	-0.01	0.00	40.00	11.09	-0.01
	👇 -5%	👇 -3%	👆 10%	👆 1%	👉 -1%	👆 1%	👆 5%
Tot.Vol(GWh)	373.56	360.69	398.29	403.96	401.62	406.63	425.18

Trades by Order Type

Delivery Day		20.06	21.06	22.06	23.06	24.06	25.06	26.06	
Ord Price Type		Sell & Buy Trades in (GWh) per Price Type							(%)
PPT	(S)	83.379	83.637	81.817	71.841	63.403	66.832	80.911	38.06%
HBD	(S)	75.272	67.229	87.242	90.967	82.325	86.427	93.814	44.13%
BLK	(S)	28.129	29.177	29.167	37.544	52.636	47.369	37.855	17.81%
CPL	(S)	0.000	0.303	0.919	1.628	2.445	2.690	0.011	0.01%
PPT	(B)	17.500	16.256	17.878	17.854	18.089	18.356	19.094	8.98%
HBD	(B)	141.182	132.687	155.517	162.194	160.856	164.810	166.579	78.36%
BLK	(B)	0.000	0.000	0.000	0.000	0.000	0.000	0.000	0.00%
CPL	(B)	28.098	31.403	25.750	21.932	21.864	20.151	26.918	12.66%
		Sell & Buy Orders Traded per Price Type							(%)
PPT	(S)	1669	1654	1652	1668	1685	1752	1776	34.25%
HBD	(S)	3083	2836	3199	3750	3993	3869	3397	65.52%
BLK	(S)	15	14	10	16	23	17	12	0.23%
PPT	(B)	2407	2448	2443	2432	2392	2503	2523	37.61%
HBD	(B)	4044	3852	4013	3956	3854	4116	4186	62.39%
BLK	(B)	0	0	0	0	0	0	0	0.00%

- MCP** Market Clearing Price (€/MWh)
- PPT** Priority Price-Taking
- HBD** Hybrid
- BLK** Block
- CPL** Market Coupling Flow

Trade's Volume Mix

		Sell - MWh	Buy - MWh	
Lignite	(3.2%)	6,743	0	(0.0%)
Crete Conv.	(0.0%)	0	0	(0.0%)
Gas	(29.8%)	63,300	0	(0.0%)
Hydro	(5.0%)	10,651	0	(0.0%)
Imports	(1.1%)	2,260		
RES	(59.2%)	125,909	1,296	(0.6%)
Crete RES	(1.5%)	3,239	0	(0.0%)
BESS	(0.2%)	489	561	(0.3%)
HV Load	(0.0%)	0	21,170	(10.0%)
MV Load	(0.0%)	0	38,189	(18.0%)
LV Load	(0.0%)	0	96,645	(45.5%)
Crete Load	(0.0%)	0	10,673	(5.0%)
Pumping	(0.0%)	0	0	(0.0%)
Exports			41,040	(19.3%)
Sys.Losses	(0.0%)	0	3,017	(1.4%)
D/R Load	(0.0%)	0	0	(0.0%)

