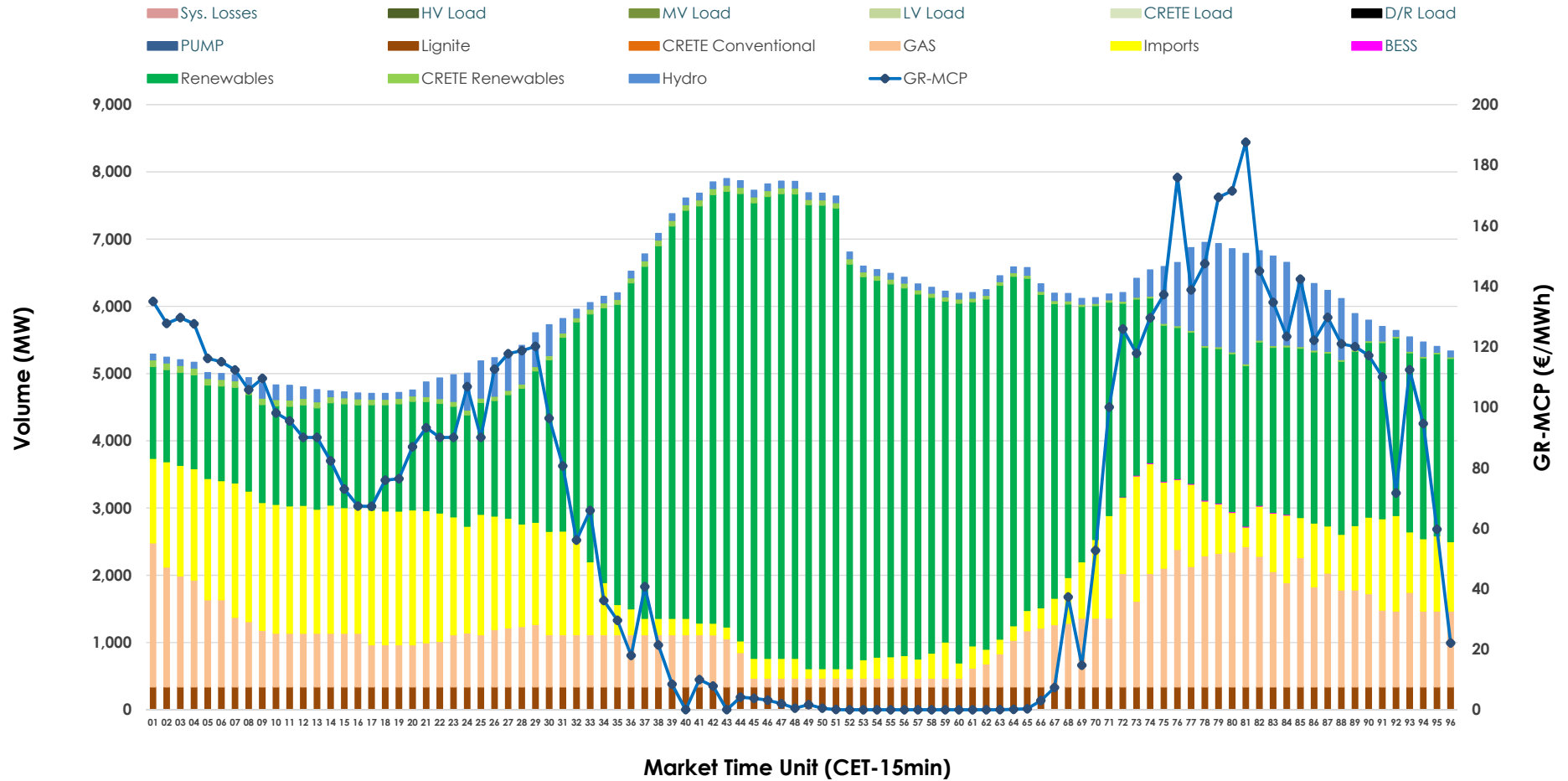


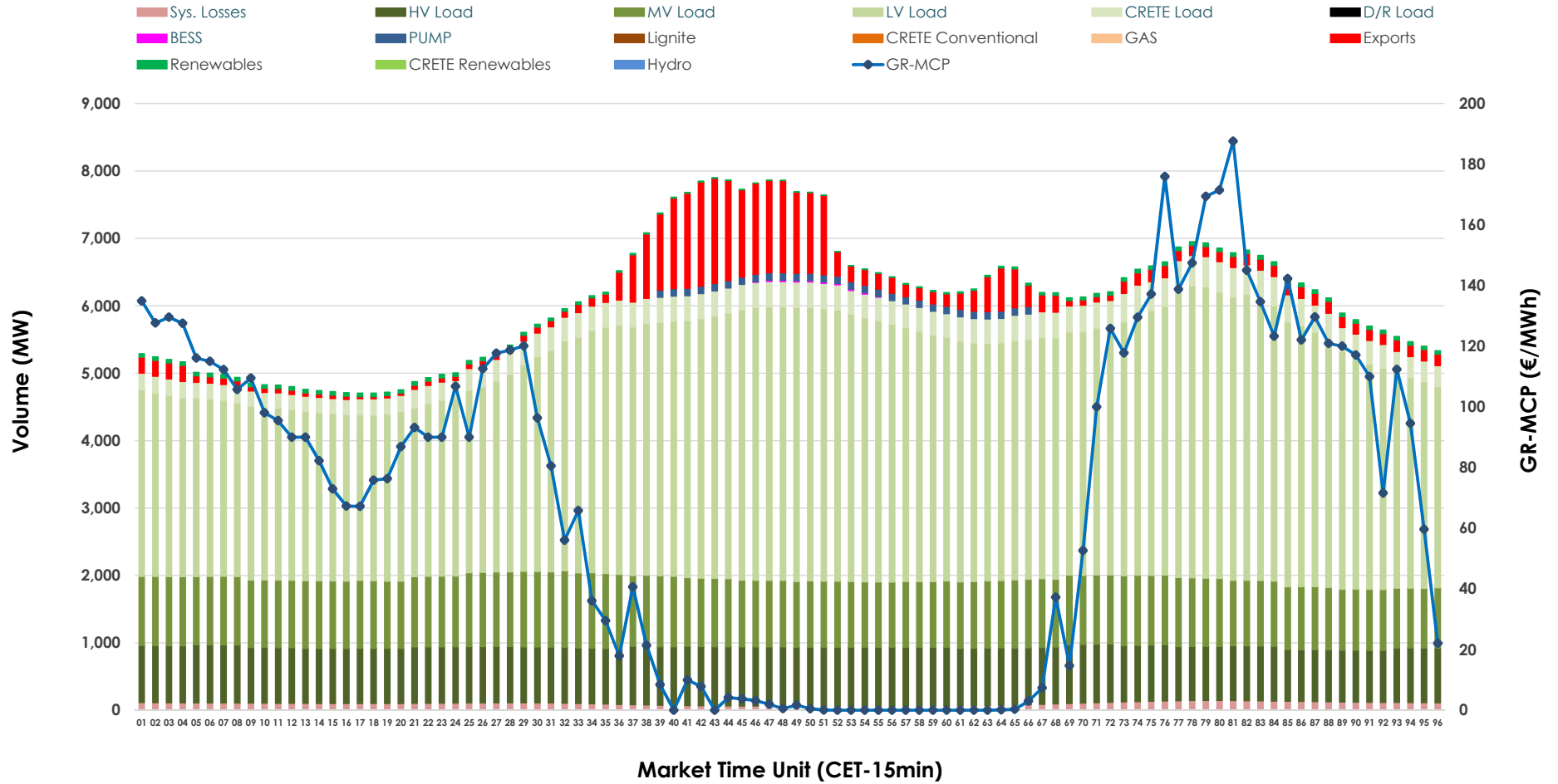


# Day-Ahead Market Outlook

04.04.2026 Day-Ahead Market - Sell



### 04.04.2026 Day-Ahead Market - Buy



### GR Bidding Zone Weekly Figures

Delivery Day	29.03	30.03	31.03	01.04	02.04	03.04	04.04
	👇 -6%	👆 50%	👆 13%	👆 16%	👇 -12%	👇 -5%	👇 -46%
<b>Avg.MCP (€/MWh)</b>	78.67	118.01	133.84	154.99	136.58	129.62	70.29
<b>Max.MCP (€/MWh)</b>	159.68	223.00	218.54	239.12	196.93	215.54	187.56
<b>Min.MCP (€/MWh)</b>	0.00	0.02	91.97	119.18	105.00	22.09	0.00
	👇 -6%	👆 10%	👆 3%	👆 3%	👉 0%	👇 -12%	👇 -8%
<b>Tot.Vol(GWh)</b>	310.02	341.69	350.68	361.49	360.02	318.52	292.69

### Trades by Order Type

Delivery Day		29.03	30.03	31.03	01.04	02.04	03.04	04.04	
<b>Ord Price Type</b>		<b>Sell &amp; Buy Trades in (GWh) per Price Type</b>							<b>(%)</b>
<b>PPT</b>	(S)	53.869	52.119	53.482	56.513	68.739	50.740	54.159	37.01%
<b>HBD</b>	(S)	60.502	74.533	74.499	74.726	73.492	61.037	61.632	42.11%
<b>BLK</b>	(S)	21.936	30.517	40.412	41.726	33.560	36.198	15.314	10.46%
<b>CPL</b>	(S)	18.705	13.675	6.945	7.778	4.221	11.285	15.240	10.41%
<b>PPT</b>	(B)	14.311	13.444	14.177	14.771	14.608	13.665	13.285	9.08%
<b>HBD</b>	(B)	124.133	136.551	141.287	148.563	151.077	140.527	128.816	88.02%
<b>BLK</b>	(B)	0.000	0.000	0.000	0.000	0.000	0.000	0.000	0.00%
<b>CPL</b>	(B)	16.567	20.849	19.875	17.409	14.326	5.069	4.244	2.90%
		<b>Sell &amp; Buy Orders Traded per Price Type</b>							<b>(%)</b>
<b>PPT</b>	(S)	1557	1546	1555	1558	1510	1522	1606	37.00%
<b>HBD</b>	(S)	2506	3107	3233	3061	3012	3159	2729	62.87%
<b>BLK</b>	(S)	11	15	18	20	16	16	6	0.14%
<b>PPT</b>	(B)	2235	2243	2259	2261	2271	2238	2222	35.04%
<b>HBD</b>	(B)	3949	4044	4031	4083	4170	4001	4119	64.96%
<b>BLK</b>	(B)	0	0	0	0	0	0	0	0.00%

- MCP** Market Clearing Price (€/MWh)
- PPT** Priority Price-Taking
- HBD** Hybrid
- BLK** Block
- CPL** Market Coupling Flow

### Trade's Volume Mix

		Sell - MWh	Buy - MWh	
<b>Lignite</b>	(5.6%)	8,160	0	(0.0%)
<b>Crete Conv.</b>	(0.0%)	0	0	(0.0%)
<b>Gas</b>	(15.3%)	22,410	0	(0.0%)
<b>Hydro</b>	(5.2%)	7,631	0	(0.0%)
<b>Imports</b>	(16.5%)	24,220		
<b>RES</b>	(56.3%)	82,370	924	(0.6%)
<b>Crete RES</b>	(1.0%)	1,515	0	(0.0%)
<b>BESS</b>	(0.0%)	39	47	(0.0%)
<b>HV Load</b>	(0.0%)	0	20,100	(13.7%)
<b>MV Load</b>	(0.0%)	0	24,203	(16.5%)
<b>LV Load</b>	(0.0%)	0	81,737	(55.9%)
<b>Crete Load</b>	(0.0%)	0	8,186	(5.6%)
<b>Pumping</b>	(0.0%)	0	770	(0.5%)
<b>Exports</b>			8,016	(5.5%)
<b>Sys.Losses</b>	(0.0%)	0	2,362	(1.6%)
<b>D/R Load</b>	(0.0%)	0	0	(0.0%)

