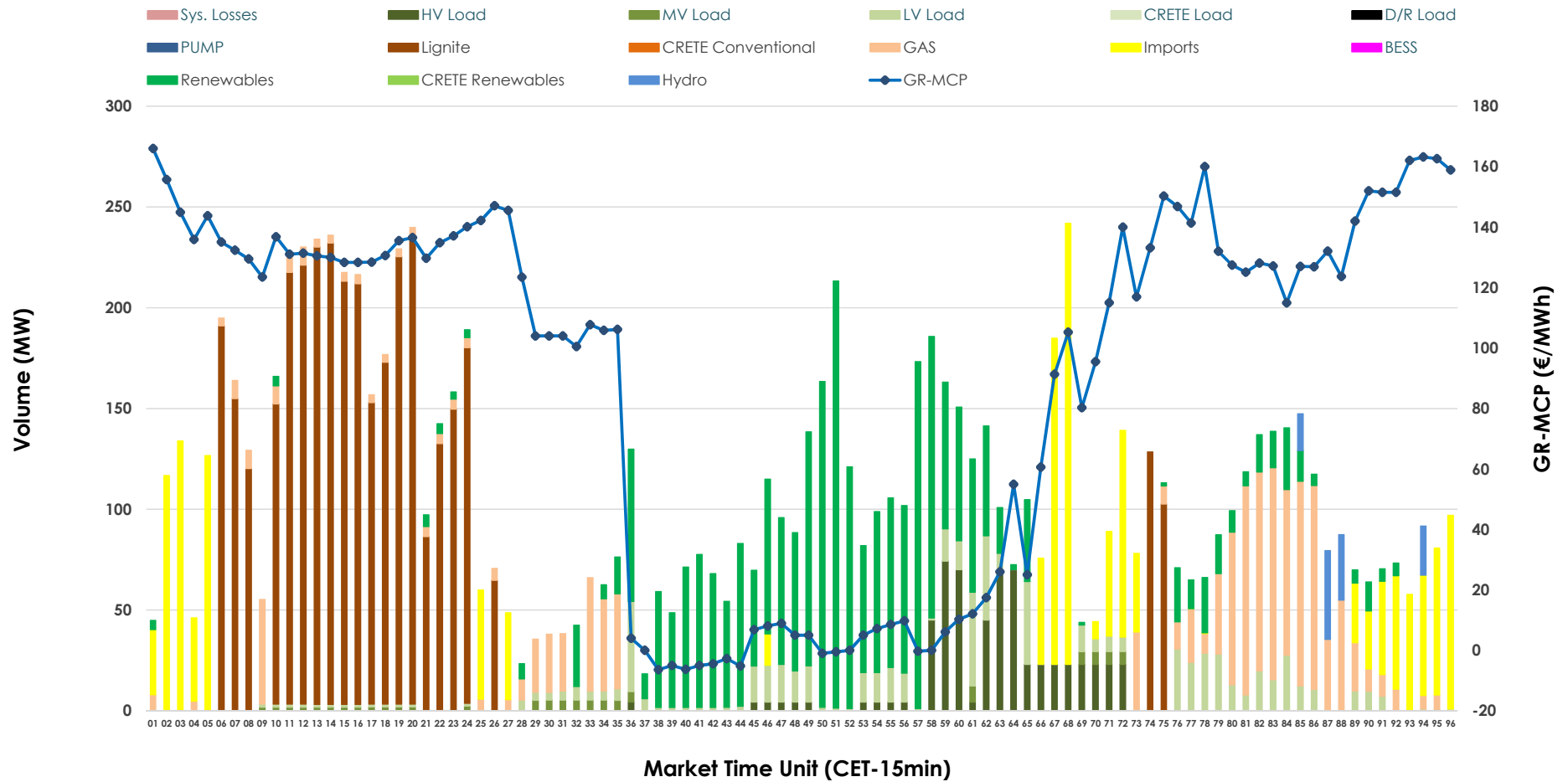


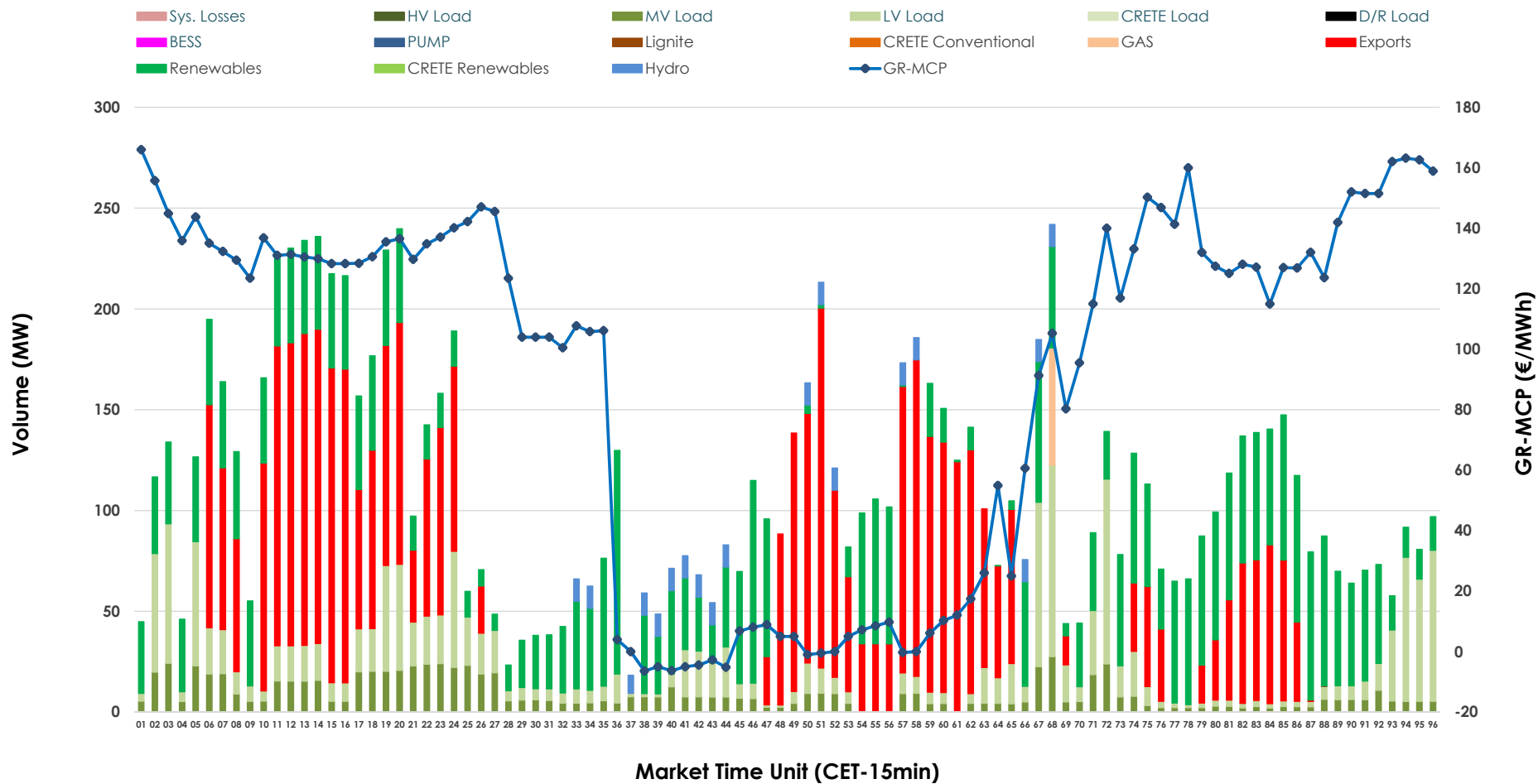


IDA '1' Market Outlook

22.05.2026 IDA '1' Market - Sell



22.05.2026 IDA '1' Market - Buy



GR Bidding Zone Weekly Figures

Delivery Day	16.05	17.05	18.05	19.05	20.05	21.05	22.05
	👇 -14%	👇 -5%			👇 -48%	👈 26%	👈 7%
Avg.MCP (€/MWh)	78.20	73.99	N/M	130.04	67.48	85.17	91.40
Max.MCP (€/MWh)	130.66	168.63	N/M	248.28	209.51	224.45	165.99
Min.MCP (€/MWh)	-4.75	-4.52	N/M	72.72	-9.66	-16.86	-6.39
	👈 69%	👇 -9%			👈 17%	👈 -1%	👈 40%
Tot.Vol(GWh)	4.12	3.74	N/M	3.33	3.89	3.87	5.40

Trades by Order Type

Delivery Day		16.05	17.05	18.05	19.05	20.05	21.05	22.05	
Ord Price Type		Sell & Buy Trades in (GWh) per Price Type							(%)
PPT	(S)	0.000	0.000		0.000	0.000	0.000	0.000	0.00%
HBD	(S)	1.800	1.492		0.966	1.790	1.934	2.290	84.77%
BLK	(S)	0.000	0.000		0.000	0.000	0.000	0.000	0.00%
CPL	(S)	0.262	0.379		0.697	0.156	0.000	0.412	15.23%
PPT	(B)	0.000	0.000		0.000	0.000	0.000	0.000	0.00%
HBD	(B)	1.025	1.845		1.537	1.820	1.934	1.613	59.68%
BLK	(B)	0.000	0.000		0.000	0.000	0.000	0.000	0.00%
CPL	(B)	1.037	0.027		0.126	0.126	0.000	1.089	40.32%
		Sell & Buy Orders Traded per Price Type							(%)
PPT	(S)	0	0		0	0	0	0	0.00%
HBD	(S)	224	227		393	388	224	290	100.00%
BLK	(S)	0	0		0	0	0	0	0.00%
PPT	(B)	0	0		0	0	0	0	0.00%
HBD	(B)	663	679		796	684	783	639	100.00%
BLK	(B)	0	0		0	0	0	0	0.00%

- MCP** Market Clearing Price (€/MWh)
- PPT** Priority Price-Taking
- HBD** Hybrid
- BLK** Block
- CPL** Market Coupling Flow

Trade's Volume Mix

	Sell - MWh	Buy - MWh	
Lignite (32.7%)	883	0	(0.0%)
Crete Conv. (0.0%)	0	0	(0.0%)
Gas (12.9%)	348	15	(0.5%)
Hydro (1.1%)	30	49	(1.8%)
Imports (15.2%)	412		
RES (24.8%)	670	905	(33.5%)
Crete RES (0.0%)	0	0	(0.0%)
BESS (0.0%)	0	0	(0.0%)
HV Load (5.6%)	151	0	(0.0%)
MV Load (0.9%)	25	217	(8.0%)
LV Load (6.8%)	183	426	(15.8%)
Crete Load (0.0%)	0	0	(0.0%)
Pumping (0.0%)	0	0	(0.0%)
Exports		1,089	(40.3%)
Sys.Losses (0.0%)	0	0	(0.0%)
D/R Load (0.0%)	0	0	(0.0%)

