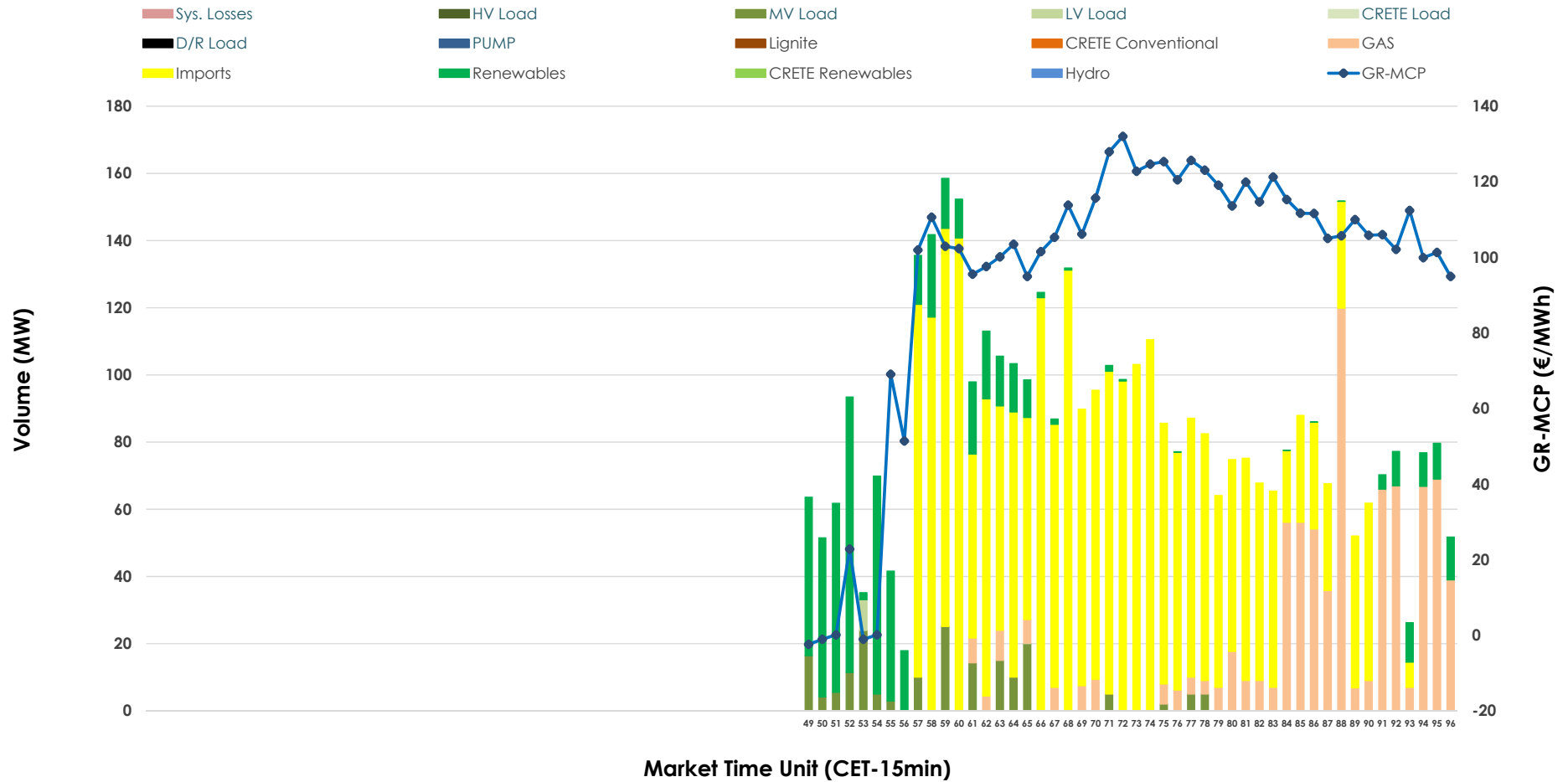


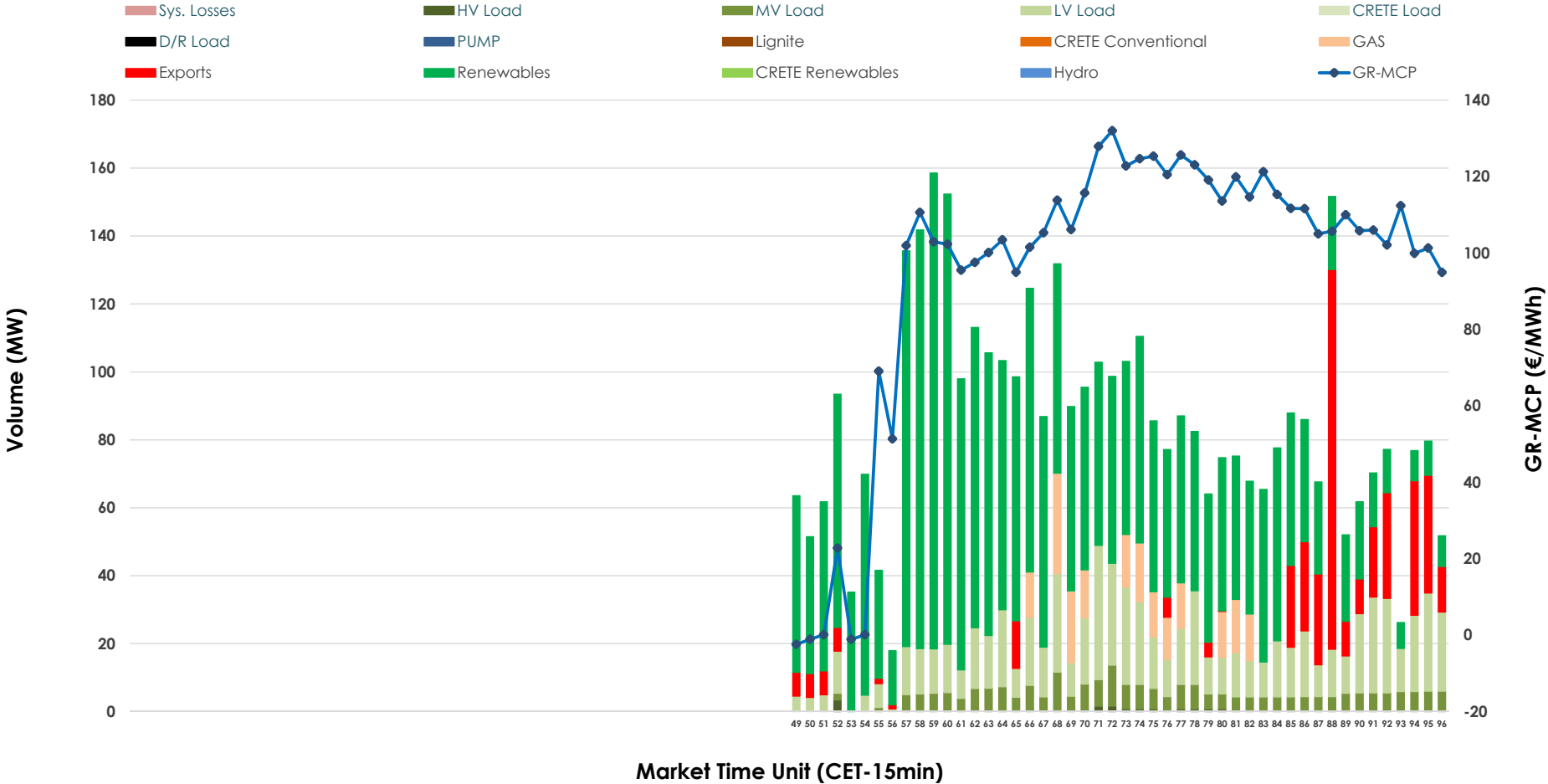


IDA '3' Market Outlook

08.02.2026 IDA '3' Market - Sell



08.02.2026 IDA '3' Market - Buy



GR Bidding Zone Weekly Figures

Delivery Day	02.02	03.02	04.02	05.02	06.02	07.02	08.02
	↑ 35%	↓ -3%	↓ -40%	↑ 36%	↓ -23%	↑ 14%	↑ 3%
Avg.MCP (€/MWh)	132.44	129.08	77.94	106.18	81.36	92.49	95.06
Max.MCP (€/MWh)	245.66	222.90	133.33	158.92	130.67	138.67	132.01
Min.MCP (€/MWh)	61.08	67.86	0.10	67.30	0.00	-25.81	-2.41
	↓ -43%	↑ 32%	↓ -65%	↑ 297%	↓ -88%	↑ 421%	↑ 12%
Tot.Vol(GWh)	1.58	2.09	0.73	2.92	0.35	1.84	2.07

Trades by Order Type

Delivery Day		02.02	03.02	04.02	05.02	06.02	07.02	08.02	
Ord Price Type		Sell & Buy Trades in (GWh) per Price Type							(%)
PPT	(S)	0.000	0.000	0.000	0.000	0.000	0.000	0.000	0.00%
HBD	(S)	0.786	1.018	0.367	0.935	0.177	0.703	0.384	37.15%
BLK	(S)	0.000	0.000	0.000	0.000	0.000	0.000	0.000	0.00%
CPL	(S)	0.004	0.028	0.000	0.523	0.000	0.219	0.649	62.85%
PPT	(B)	0.000	0.000	0.000	0.000	0.000	0.000	0.000	0.00%
HBD	(B)	0.301	0.432	0.319	1.454	0.171	0.734	0.932	90.22%
BLK	(B)	0.000	0.000	0.000	0.000	0.000	0.000	0.000	0.00%
CPL	(B)	0.490	0.613	0.048	0.004	0.006	0.188	0.101	9.78%
		Sell & Buy Orders Traded per Price Type							(%)
PPT	(S)	0	0	0	0	0	0	0	0.00%
HBD	(S)	209	262	140	268	90	143	112	100.00%
BLK	(S)	0	0	0	0	0	0	0	0.00%
PPT	(B)	0	0	0	0	0	0	0	0.00%
HBD	(B)	120	112	213	153	120	160	327	100.00%
BLK	(B)	0	0	0	0	0	0	0	0.00%

- MCP** Market Clearing Price (€/MWh)
- PPT** Priority Price-Taking
- HBD** Hybrid
- BLK** Block
- CPL** Market Coupling Flow

Trade's Volume Mix

	Sell - MWh	Buy - MWh	
Lignite (0.0%)	0	0	(0.0%)
Crete Conv. (0.0%)	0	0	(0.0%)
Gas (18.7%)	193	48	(4.7%)
Hydro (0.0%)	0	0	(0.0%)
Imports (62.8%)	649		
RES (13.8%)	142	631	(61.1%)
Crete RES (0.0%)	0	0	(0.0%)
HV Load (0.0%)	0	3	(0.3%)
MV Load (4.4%)	45	59	(5.8%)
LV Load (0.3%)	3	190	(18.4%)
Crete Load (0.0%)	0	0	(0.0%)
Pumping (0.0%)	0	0	(0.0%)
Exports		101	(9.8%)
Sys.Losses (0.0%)	0	0	(0.0%)
D/R Load (0.0%)	0	0	(0.0%)

