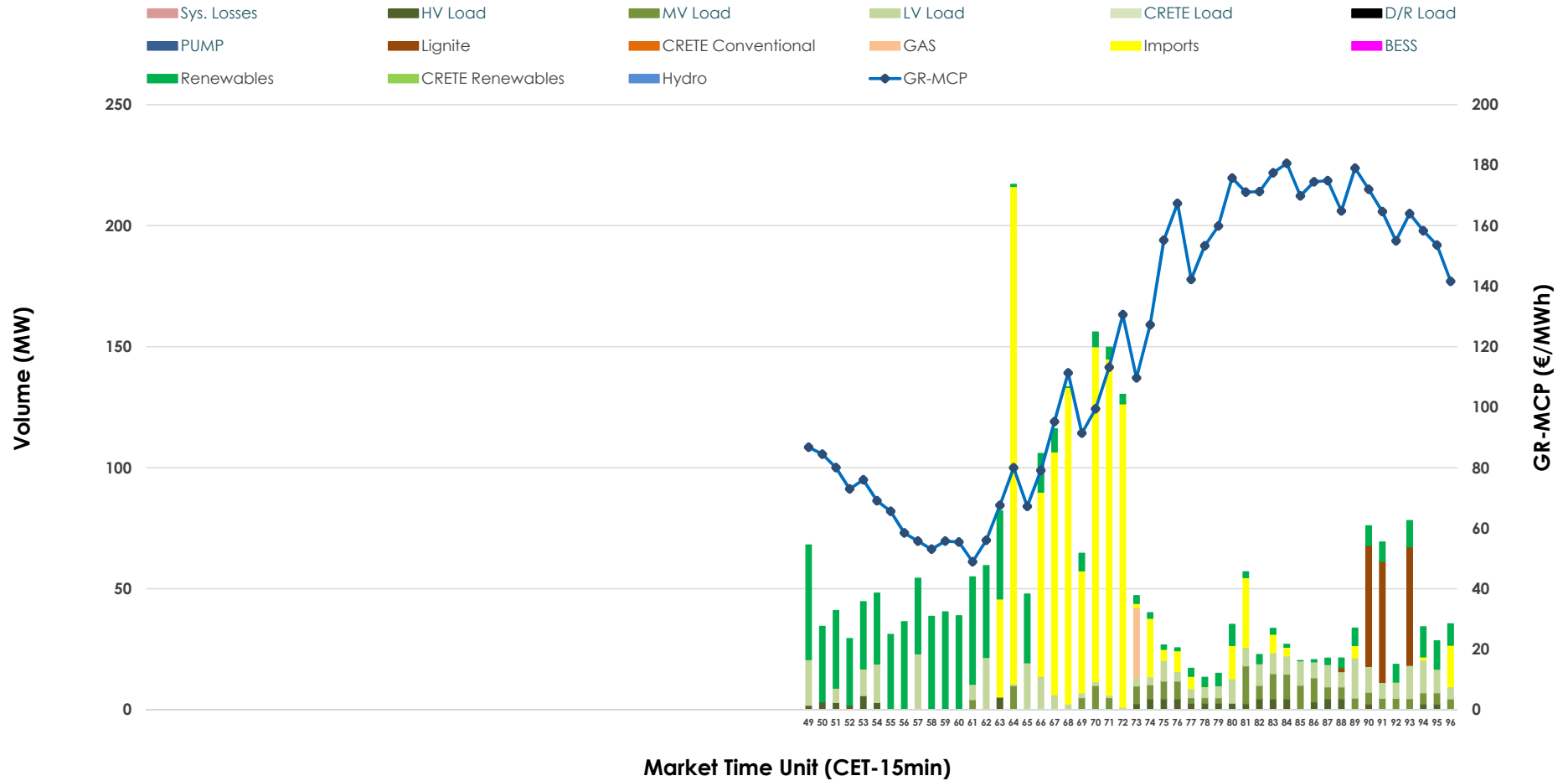


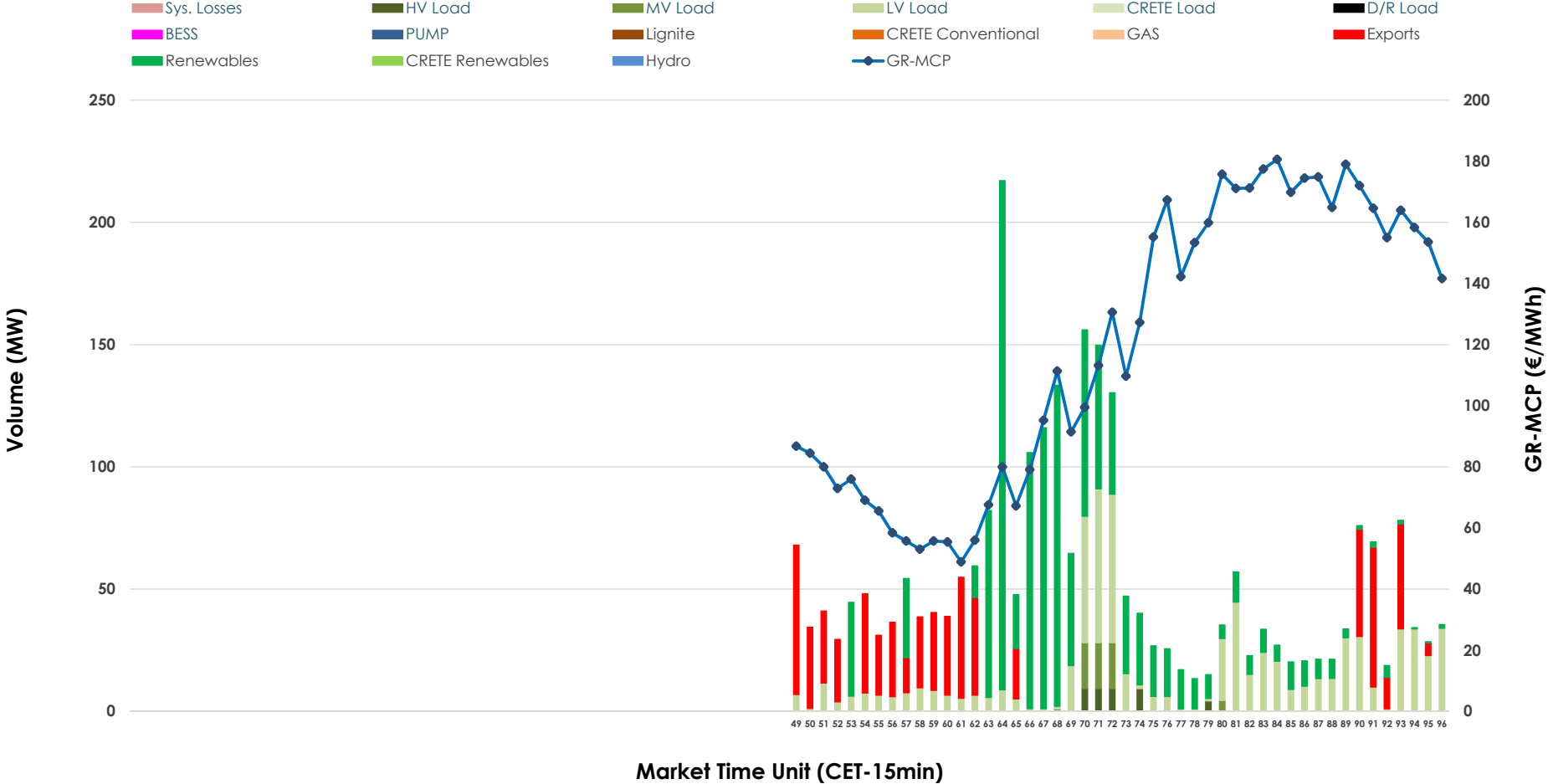


IDA '3' Market Outlook

05.06.2026 IDA '3' Market - Sell



05.06.2026 IDA '3' Market - Buy



GR Bidding Zone Weekly Figures

Delivery Day	30.05	31.05	01.06	02.06	03.06	04.06	05.06
	↗ 4%	↗ 32%	↗ 16%	↘ -14%	↘ -12%	↗ 17%	↗ 20%
Avg.MCP (€/MWh)	73.90	97.75	113.15	96.79	84.90	99.36	119.09
Max.MCP (€/MWh)	168.60	171.99	245.99	171.85	151.86	203.24	180.60
Min.MCP (€/MWh)	-8.00	19.99	15.00	1.83	7.31	3.05	48.90
	↗ 8%	↕ 146%	↘ -36%	↘ -32%	↗ 21%	↘ -16%	↘ -32%
Tot.Vol(GWh)	1.82	4.47	2.86	1.93	2.33	1.95	1.32

Trades by Order Type

Delivery Day		30.05	31.05	01.06	02.06	03.06	04.06	05.06	
Ord Price Type		Sell & Buy Trades in (GWh) per Price Type							(%)
PPT	(S)	0.000	0.000	0.000	0.000	0.000	0.000	0.000	0.00%
HBD	(S)	0.825	0.705	1.017	0.682	0.916	0.423	0.378	57.26%
BLK	(S)	0.000	0.000	0.000	0.000	0.000	0.000	0.000	0.00%
CPL	(S)	0.086	1.532	0.412	0.284	0.251	0.552	0.282	42.74%
PPT	(B)	0.000	0.000	0.000	0.000	0.000	0.000	0.000	0.00%
HBD	(B)	0.557	1.909	0.942	0.786	0.667	0.905	0.504	76.36%
BLK	(B)	0.000	0.000	0.000	0.000	0.000	0.000	0.000	0.00%
CPL	(B)	0.354	0.328	0.488	0.180	0.500	0.069	0.156	23.64%
		Sell & Buy Orders Traded per Price Type							(%)
PPT	(S)	0	0	0	0	0	0	0	0.00%
HBD	(S)	109	177	168	189	244	146	238	100.00%
BLK	(S)	0	0	0	0	0	0	0	0.00%
PPT	(B)	0	0	0	0	0	0	0	0.00%
HBD	(B)	212	164	184	277	260	273	216	100.00%
BLK	(B)	0	0	0	0	0	0	0	0.00%

- MCP** Market Clearing Price (€/MWh)
- PPT** Priority Price-Taking
- HBD** Hybrid
- BLK** Block
- CPL** Market Coupling Flow

Trade's Volume Mix

	Sell - MWh	Buy - MWh	
Lignite (5.7%)	38	0	(0.0%)
Crete Conv. (0.0%)	0	0	(0.0%)
Gas (1.1%)	7	0	(0.0%)
Hydro (0.0%)	0	0	(0.0%)
Imports (42.7%)	282		
RES (27.6%)	182	299	(45.4%)
Crete RES (0.0%)	0	0	(0.0%)
BESS (0.0%)	0	0	(0.0%)
HV Load (3.3%)	22	10	(1.6%)
MV Load (6.7%)	44	15	(2.3%)
LV Load (12.9%)	85	179	(27.1%)
Crete Load (0.0%)	0	0	(0.0%)
Pumping (0.0%)	0	0	(0.0%)
Exports		156	(23.6%)
Sys.Losses (0.0%)	0	0	(0.0%)
D/R Load (0.0%)	0	0	(0.0%)

