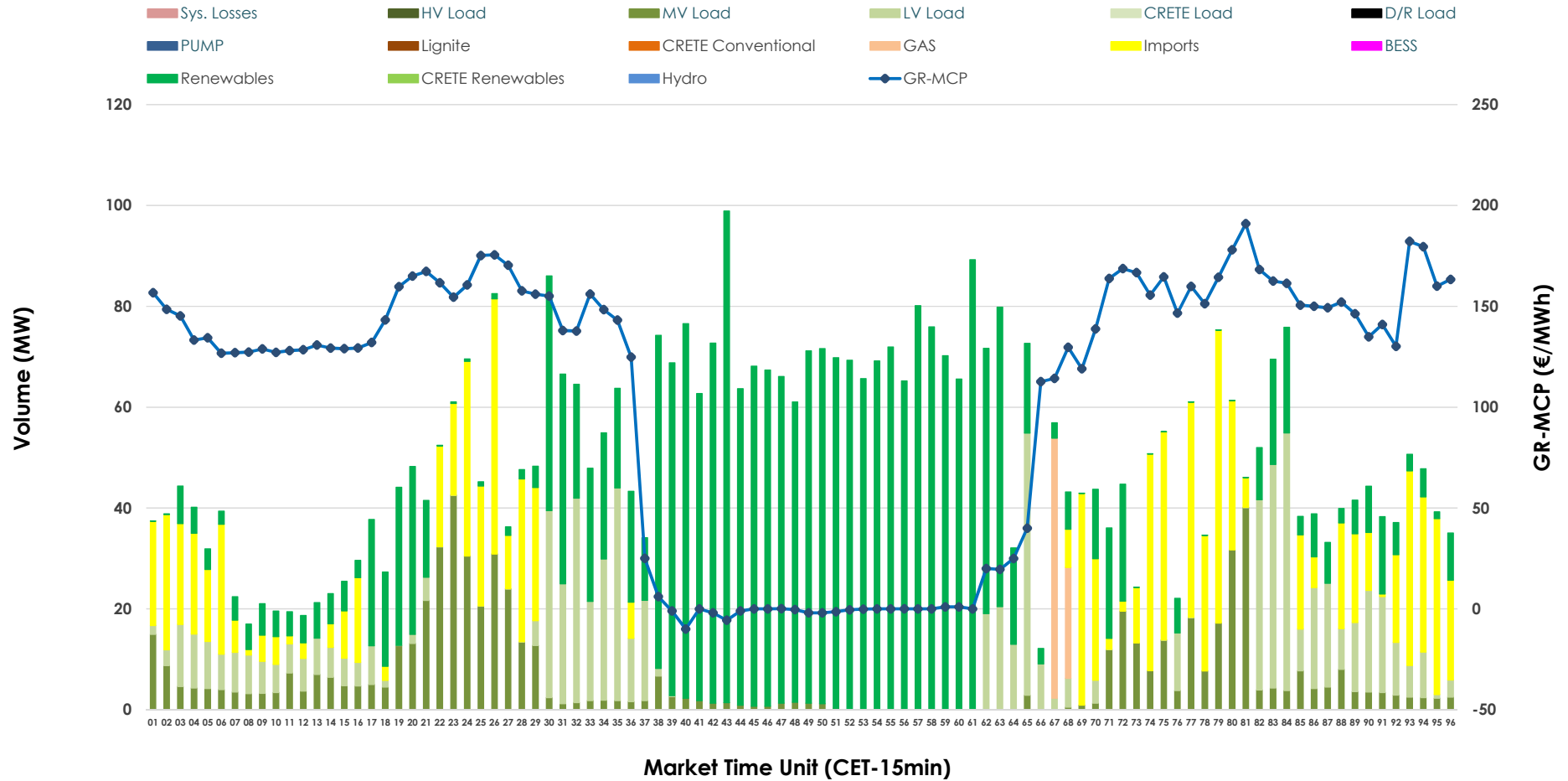


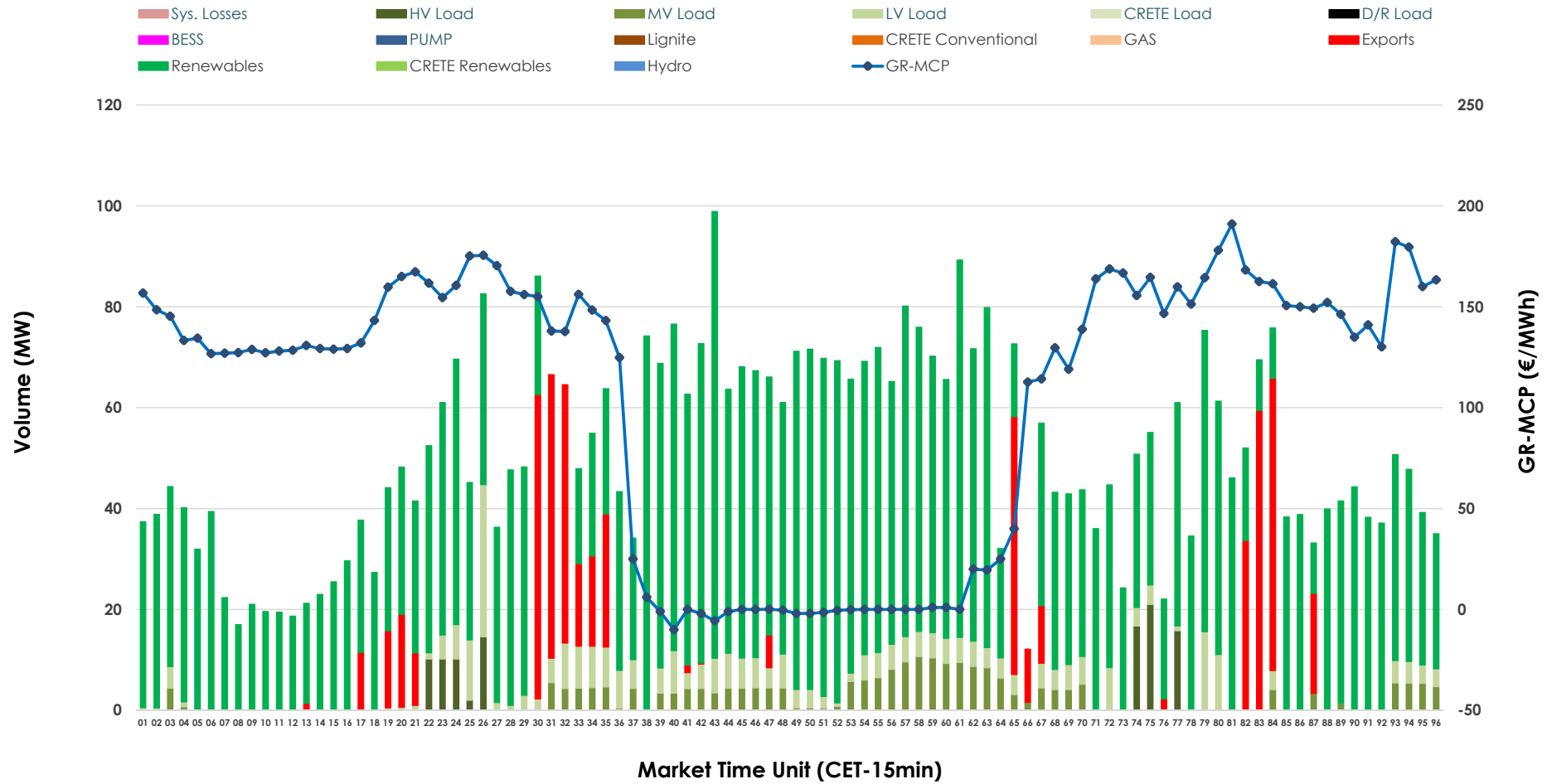


# IDA '2' Market Outlook

11.05.2026 IDA '2' Market - Sell



### 11.05.2026 IDA '2' Market - Buy



### GR Bidding Zone Weekly Figures

Delivery Day	05.05	06.05	07.05	08.05	09.05	10.05	11.05
	↗ 2%	→ 0%	↗ 24%	↘ -7%	↘ -20%	↘ -13%	↗ 21%
<b>Avg.MCP (€/MWh)</b>	107.48	107.56	133.29	123.78	99.47	86.97	105.00
<b>Max.MCP (€/MWh)</b>	277.05	202.53	189.73	167.32	196.67	177.64	191.00
<b>Min.MCP (€/MWh)</b>	-11.79	-8.32	100.24	66.00	-10.00	-0.02	-10.00
	↗ 60%	↘ -51%	↗ 63%	↘ -36%	↘ -5%	↘ -30%	↘ -11%
<b>Tot.Vol(GWh)</b>	8.08	4.00	6.53	4.16	3.95	2.77	2.46

### Trades by Order Type

Delivery Day		05.05	06.05	07.05	08.05	09.05	10.05	11.05	
<b>Ord Price Type</b>		Sell & Buy Trades in (GWh) per Price Type							(%)
<b>PPT</b>	(S)	0.000	0.000	0.000	0.000	0.000	0.000	0.000	0.00%
<b>HBD</b>	(S)	1.827	1.897	2.001	1.774	1.276	0.755	0.988	80.36%
<b>BLK</b>	(S)	0.000	0.000	0.000	0.000	0.000	0.000	0.000	0.00%
<b>CPL</b>	(S)	2.212	0.102	1.266	0.303	0.700	0.629	0.241	19.64%
<b>PPT</b>	(B)	0.000	0.000	0.000	0.000	0.000	0.000	0.000	0.00%
<b>HBD</b>	(B)	4.034	1.120	1.968	1.038	1.407	1.055	1.094	89.03%
<b>BLK</b>	(B)	0.000	0.000	0.000	0.000	0.000	0.000	0.000	0.00%
<b>CPL</b>	(B)	0.005	0.878	1.300	1.039	0.570	0.329	0.135	10.97%
		Sell & Buy Orders Traded per Price Type							(%)
<b>PPT</b>	(S)	0	0	0	0	0	0	0	0.00%
<b>HBD</b>	(S)	409	223	283	320	162	232	380	100.00%
<b>BLK</b>	(S)	0	0	0	0	0	0	0	0.00%
<b>PPT</b>	(B)	0	0	0	0	0	0	0	0.00%
<b>HBD</b>	(B)	374	345	454	354	486	434	529	100.00%
<b>BLK</b>	(B)	0	0	0	0	0	0	0	0.00%

- MCP** Market Clearing Price (€/MWh)
- PPT** Priority Price-Taking
- HBD** Hybrid
- BLK** Block
- CPL** Market Coupling Flow

### Trade's Volume Mix

	Sell - MWh	Buy - MWh	
<b>Lignite</b> (0.0%)	0	0	(0.0%)
<b>Crete Conv.</b> (0.0%)	0	0	(0.0%)
<b>Gas</b> (1.5%)	18	0	(0.0%)
<b>Hydro</b> (0.0%)	0	0	(0.0%)
<b>Imports</b> (19.6%)	241		
<b>RES</b> (50.3%)	618	928	(75.5%)
<b>Crete RES</b> (0.0%)	0	0	(0.0%)
<b>BESS</b> (0.0%)	0	0	(0.0%)
<b>HV Load</b> (0.0%)	0	25	(2.0%)
<b>MV Load</b> (13.0%)	160	58	(4.7%)
<b>LV Load</b> (15.5%)	191	83	(6.8%)
<b>Crete Load</b> (0.0%)	0	0	(0.0%)
<b>Pumping</b> (0.0%)	0	0	(0.0%)
<b>Exports</b>		135	(11.0%)
<b>Sys.Losses</b> (0.0%)	0	0	(0.0%)
<b>D/R Load</b> (0.0%)	0	0	(0.0%)

