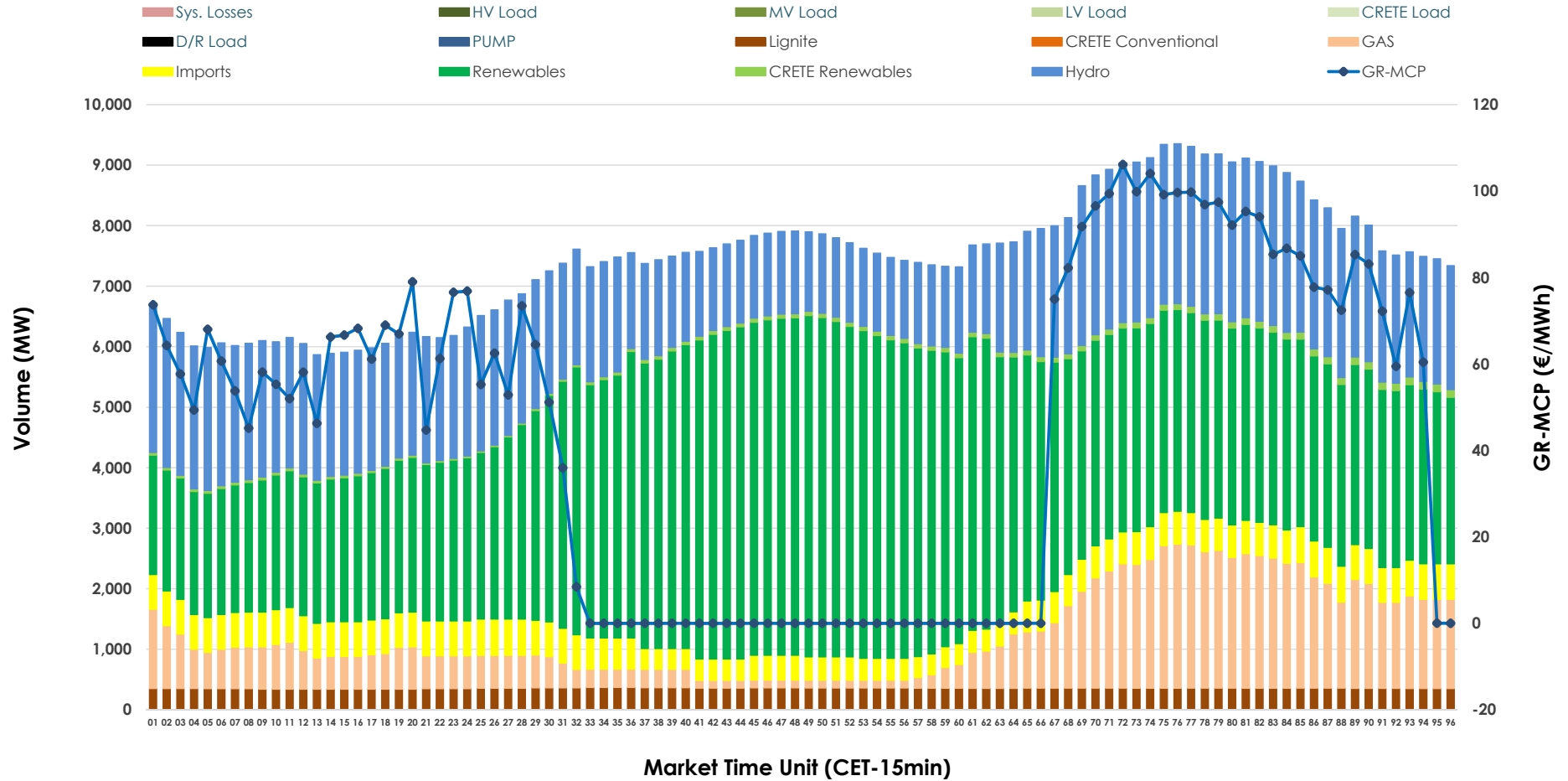


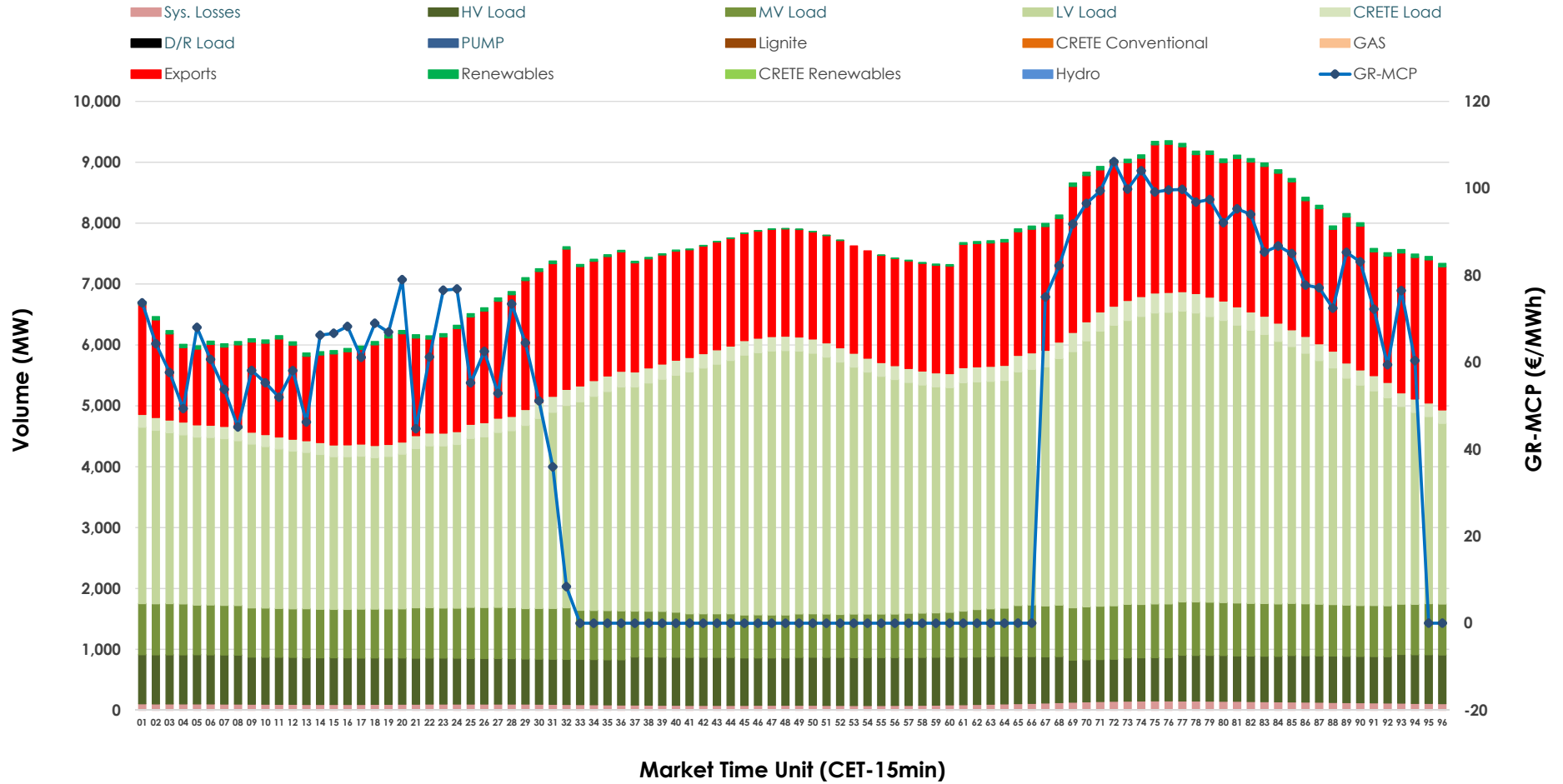


# Day-Ahead Market Outlook

22.02.2026 Day-Ahead Market - Sell



## 22.02.2026 Day-Ahead Market - Buy



### GR Bidding Zone Weekly Figures

Delivery Day	16.02	17.02	18.02	19.02	20.02	21.02	22.02
	↑ 166%	↓ -20%	↓ -10%	↑ 39%	↔ 2%	↓ -14%	↓ -29%
<b>Avg.MCP (€/MWh)</b>	71.96	57.80	52.05	72.50	74.11	63.81	45.14
<b>Max.MCP (€/MWh)</b>	163.98	152.38	173.32	161.66	132.36	116.58	106.14
<b>Min.MCP (€/MWh)</b>	0.00	0.00	-1.01	-0.01	0.01	0.01	-0.01
	↔ 7%	↔ 9%	↔ 0%	↓ -3%	↔ 1%	↓ -14%	↔ 4%
<b>Tot.Vol(GWh)</b>	372.50	405.83	406.30	394.81	400.54	346.45	358.95

### Trades by Order Type

Delivery Day		16.02	17.02	18.02	19.02	20.02	21.02	22.02	
<b>Ord Price Type</b>		<b>Sell &amp; Buy Trades in (GWh) per Price Type</b>							<b>(%)</b>
<b>PPT</b>	(S)	101.437	116.187	116.225	114.204	119.604	103.858	111.881	62.34%
<b>HBD</b>	(S)	65.090	67.805	66.379	62.963	64.312	52.022	55.819	31.10%
<b>BLK</b>	(S)	19.722	14.780	20.466	19.776	16.349	16.689	11.773	6.56%
<b>CPL</b>	(S)	0.000	4.142	0.078	0.464	0.003	0.657	0.000	0.00%
<b>PPT</b>	(B)	14.176	12.318	13.438	12.892	13.052	12.898	12.126	6.76%
<b>HBD</b>	(B)	137.125	153.387	151.624	151.249	150.625	136.433	132.898	74.05%
<b>BLK</b>	(B)	0.000	0.000	0.000	0.000	0.000	0.000	0.000	0.00%
<b>CPL</b>	(B)	34.948	37.209	38.086	33.266	36.591	23.895	34.448	19.19%
		<b>Sell &amp; Buy Orders Traded per Price Type</b>							<b>(%)</b>
<b>PPT</b>	(S)	2324	2508	2477	2482	2516	2504	2419	51.39%
<b>HBD</b>	(S)	2572	2512	2390	2604	2585	2686	2282	48.48%
<b>BLK</b>	(S)	10	6	11	11	7	7	6	0.13%
<b>PPT</b>	(B)	2366	2323	2393	2332	2324	2300	2308	35.64%
<b>HBD</b>	(B)	4040	4233	4317	4024	4076	3968	4167	64.36%
<b>BLK</b>	(B)	0	0	0	0	0	0	0	0.00%

- MCP** Market Clearing Price (€/MWh)
- PPT** Priority Price-Taking
- HBD** Hybrid
- BLK** Block
- CPL** Market Coupling Flow

### Trade's Volume Mix

	Sell - MWh	Buy - MWh	
<b>Lignite</b> (4.7%)	8,500	0	(0.0%)
<b>Crete Conv.</b> (0.0%)	0	0	(0.0%)
<b>Gas</b> (12.0%)	21,588	0	(0.0%)
<b>Hydro</b> (27.0%)	48,369	0	(0.0%)
<b>Imports</b> (6.8%)	12,134		
<b>RES</b> (48.6%)	87,183	968	(0.5%)
<b>Crete RES</b> (0.9%)	1,699	0	(0.0%)
<b>HV Load</b> (0.0%)	0	18,379	(10.2%)
<b>MV Load</b> (0.0%)	0	19,327	(10.8%)
<b>LV Load</b> (0.0%)	0	86,280	(48.1%)
<b>Crete Load</b> (0.0%)	0	5,905	(3.3%)
<b>Pumping</b> (0.0%)	0	0	(0.0%)
<b>Exports</b>		46,061	(25.7%)
<b>Sys.Losses</b> (0.0%)	0	2,553	(1.4%)
<b>D/R Load</b> (0.0%)	0	0	(0.0%)

