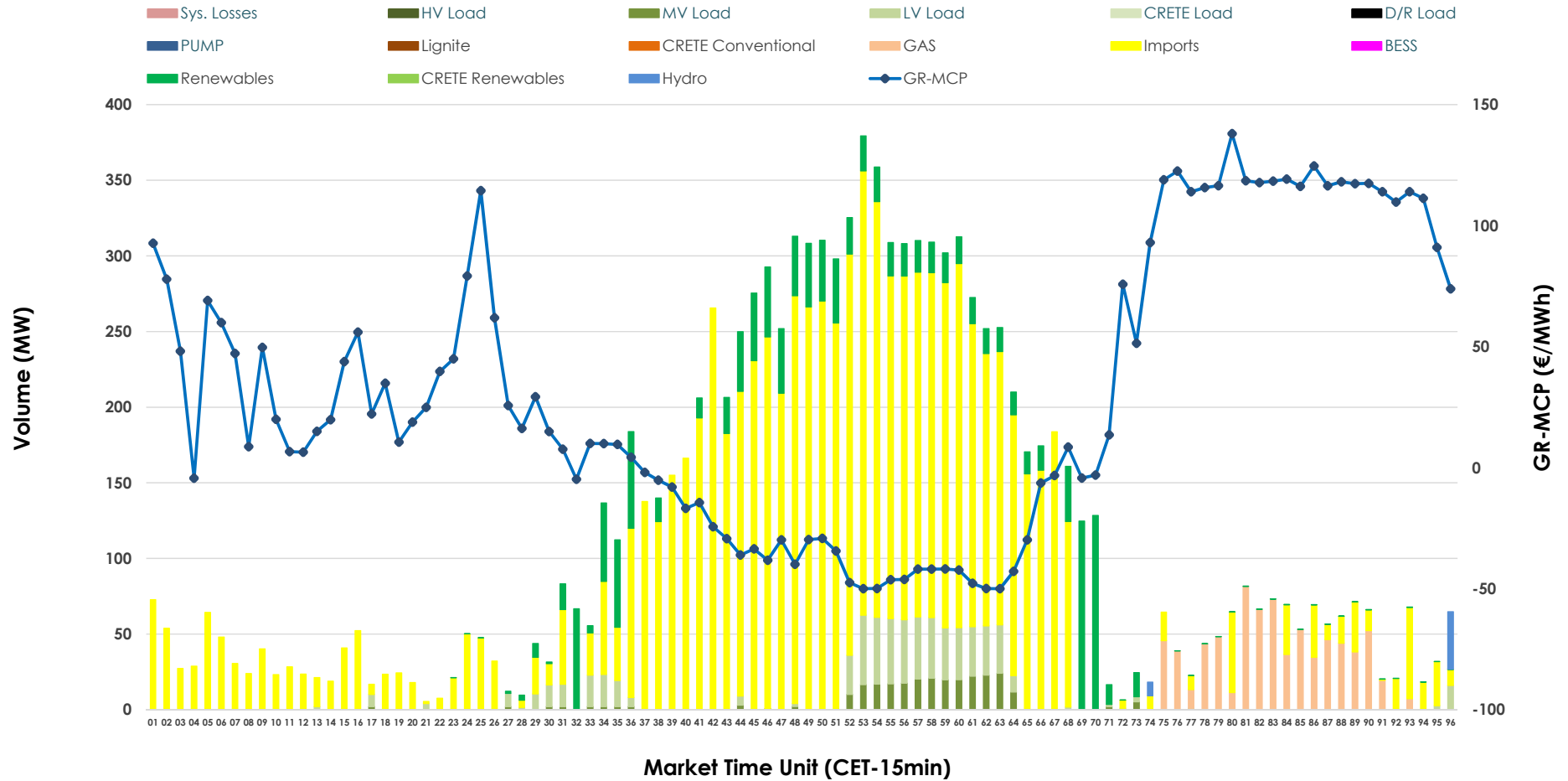


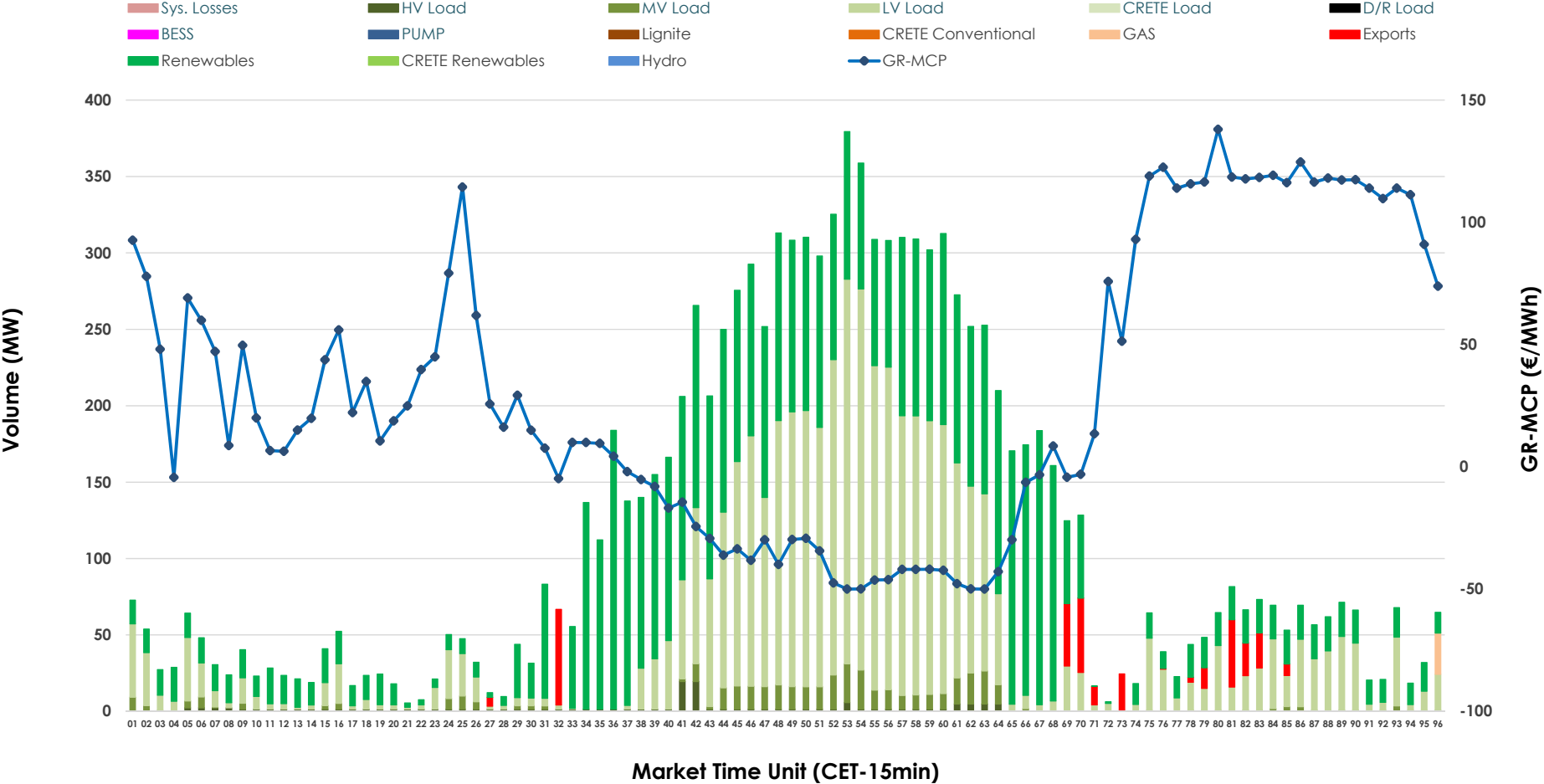


# IDA '1' Market Outlook

05.04.2026 IDA '1' Market - Sell



### 05.04.2026 IDA '1' Market - Buy



### GR Bidding Zone Weekly Figures

Delivery Day	30.03	31.03	01.04	02.04	03.04	04.04	05.04
	↑ 66%	↔ 11%	↔ 17%	↓ -13%	↓ -5%	↓ -46%	↓ -56%
<b>Avg.MCP (€/MWh)</b>	119.14	132.20	154.80	135.24	128.53	69.11	30.63
<b>Max.MCP (€/MWh)</b>	225.95	225.72	247.00	211.87	216.28	185.47	138.01
<b>Min.MCP (€/MWh)</b>	4.21	91.35	117.05	103.00	14.27	-7.10	-50.00
	↔ 6%	↑ 59%	↑ 55%	↓ -39%	↔ 2%	↓ -8%	↔ 20%
<b>Tot.Vol(GWh)</b>	3.36	5.35	8.30	5.03	5.11	4.69	5.62

### Trades by Order Type

Delivery Day		30.03	31.03	01.04	02.04	03.04	04.04	05.04	
<b>Ord Price Type</b>		Sell & Buy Trades in (GWh) per Price Type							(%)
<b>PPT</b>	(S)	0.000	0.000	0.000	0.000	0.000	0.000	0.000	0.00%
<b>HBD</b>	(S)	1.302	2.355	2.648	1.798	1.416	1.713	0.741	26.38%
<b>BLK</b>	(S)	0.000	0.000	0.000	0.000	0.000	0.000	0.000	0.00%
<b>CPL</b>	(S)	0.377	0.319	1.504	0.717	1.137	0.629	2.069	73.62%
<b>PPT</b>	(B)	0.000	0.000	0.000	0.000	0.000	0.000	0.000	0.00%
<b>HBD</b>	(B)	1.400	2.175	2.116	1.223	1.302	1.153	2.734	97.26%
<b>BLK</b>	(B)	0.000	0.000	0.000	0.000	0.000	0.000	0.000	0.00%
<b>CPL</b>	(B)	0.280	0.499	2.035	1.292	1.251	1.190	0.077	2.74%
		Sell & Buy Orders Traded per Price Type							(%)
<b>PPT</b>	(S)	0	0	0	0	0	0	0	0.00%
<b>HBD</b>	(S)	176	376	368	277	381	412	120	100.00%
<b>BLK</b>	(S)	0	0	0	0	0	0	0	0.00%
<b>PPT</b>	(B)	0	0	0	0	0	0	0	0.00%
<b>HBD</b>	(B)	860	719	673	831	586	788	412	100.00%
<b>BLK</b>	(B)	0	0	0	0	0	0	0	0.00%

- MCP** Market Clearing Price (€/MWh)
- PPT** Priority Price-Taking
- HBD** Hybrid
- BLK** Block
- CPL** Market Coupling Flow

### Trade's Volume Mix

	Sell - MWh	Buy - MWh	
<b>Lignite</b>	0	0	(0.0%)
<b>Crete Conv.</b>	0	0	(0.0%)
<b>Gas</b>	188	7	(0.2%)
<b>Hydro</b>	12	0	(0.0%)
<b>Imports</b>	2,069		
<b>RES</b>	318	1,340	(47.7%)
<b>Crete RES</b>	0	0	(0.0%)
<b>BESS</b>	0	0	(0.0%)
<b>HV Load</b>	0	37	(1.3%)
<b>MV Load</b>	67	107	(3.8%)
<b>LV Load</b>	156	1,244	(44.3%)
<b>Crete Load</b>	0	0	(0.0%)
<b>Pumping</b>	0	0	(0.0%)
<b>Exports</b>		77	(2.7%)
<b>Sys.Losses</b>	0	0	(0.0%)
<b>D/R Load</b>	0	0	(0.0%)

