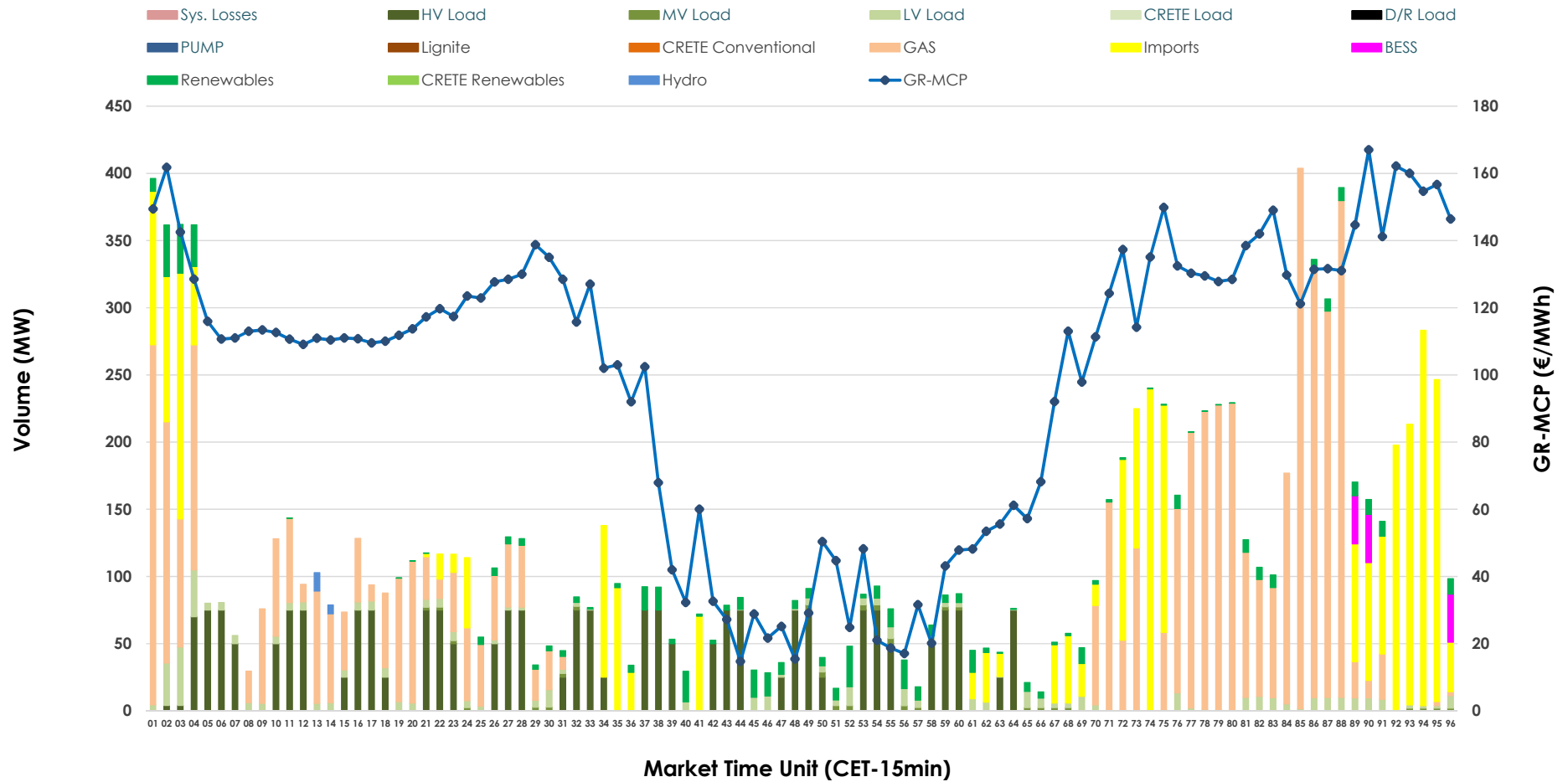


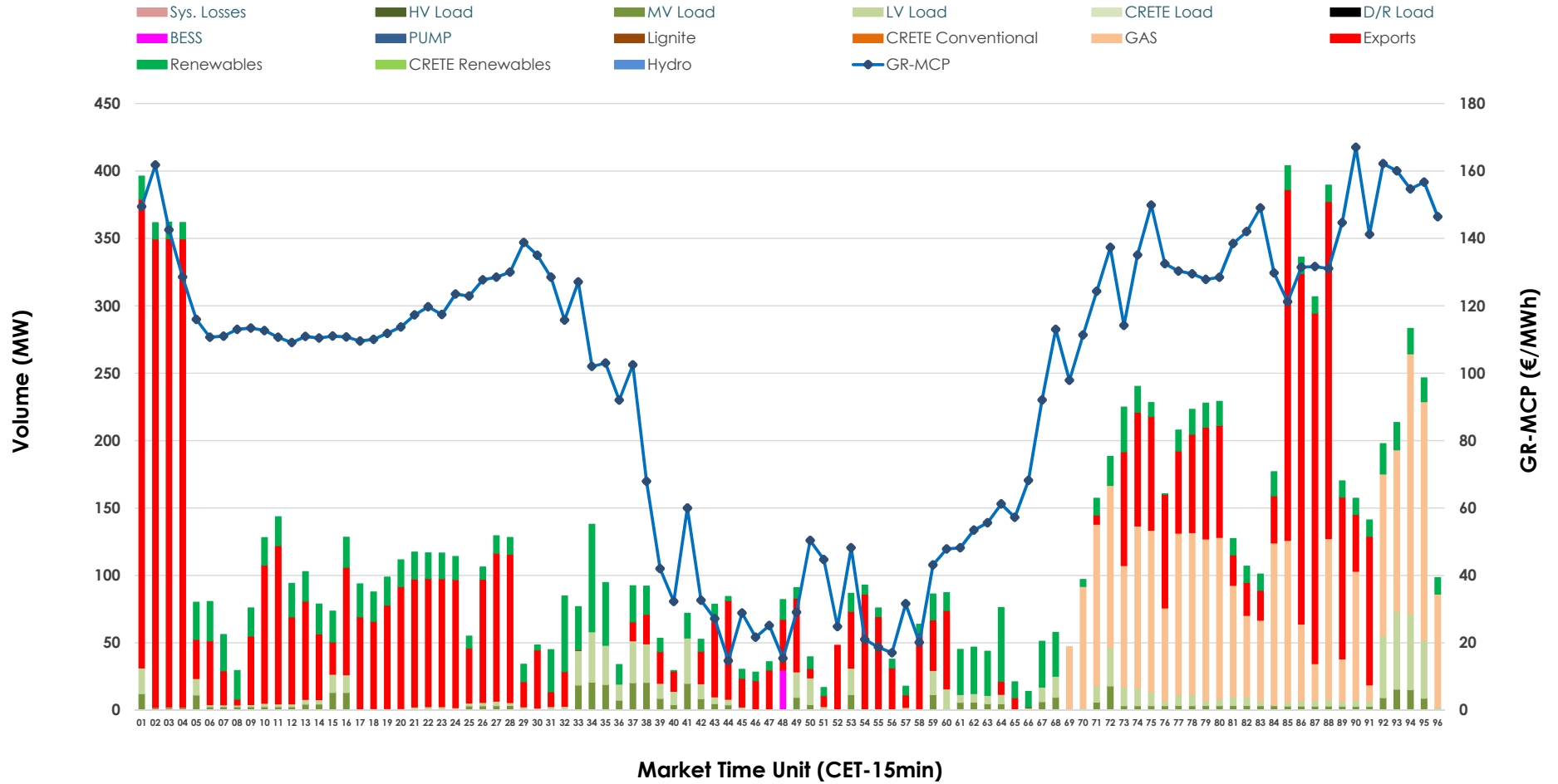


# IDA '1' Market Outlook

16.06.2026 IDA '1' Market - Sell



### 16.06.2026 IDA '1' Market - Buy



### GR Bidding Zone Weekly Figures

Delivery Day	10.06	11.06	12.06	13.06	14.06	15.06	16.06
	👇 -9%	👇 -4%	👆 16%	👇 -57%	👆 25%	👆 39%	👆 15%
<b>Avg.MCP (€/MWh)</b>	103.97	99.61	115.33	49.72	62.03	86.15	99.34
<b>Max.MCP (€/MWh)</b>	199.87	171.71	176.30	166.27	185.00	177.42	167.00
<b>Min.MCP (€/MWh)</b>	-7.15	14.37	68.99	-31.98	-6.20	-5.00	14.70
	👆 7%	👇 -7%	👆 2%	👆 56%	👇 -25%	👇 -40%	👆 83%
<b>Tot.Vol(GWh)</b>	4.85	4.51	4.60	7.18	5.41	3.25	5.95

### Trades by Order Type

Delivery Day		10.06	11.06	12.06	13.06	14.06	15.06	16.06	
<b>Ord Price Type</b>		<b>Sell &amp; Buy Trades in (GWh) per Price Type</b>							<b>(%)</b>
<b>PPT</b>	(S)	0.000	0.000	0.000	0.000	0.000	0.000	0.000	0.00%
<b>HBD</b>	(S)	1.778	1.639	1.731	3.148	2.036	1.264	2.241	75.34%
<b>BLK</b>	(S)	0.000	0.000	0.000	0.000	0.000	0.000	0.000	0.00%
<b>CPL</b>	(S)	0.647	0.617	0.571	0.441	0.669	0.359	0.733	24.66%
<b>PPT</b>	(B)	0.000	0.000	0.000	0.000	0.000	0.000	0.000	0.00%
<b>HBD</b>	(B)	0.828	1.062	1.814	3.308	2.175	1.471	1.448	48.69%
<b>BLK</b>	(B)	0.000	0.000	0.000	0.000	0.000	0.000	0.000	0.00%
<b>CPL</b>	(B)	1.597	1.194	0.488	0.281	0.529	0.152	1.526	51.31%
		<b>Sell &amp; Buy Orders Traded per Price Type</b>							<b>(%)</b>
<b>PPT</b>	(S)	0	0	0	0	0	0	0	0.00%
<b>HBD</b>	(S)	376	209	411	335	224	305	347	100.00%
<b>BLK</b>	(S)	0	0	0	0	0	0	0	0.00%
<b>PPT</b>	(B)	0	0	0	0	0	0	0	0.00%
<b>HBD</b>	(B)	549	639	749	739	681	633	589	100.00%
<b>BLK</b>	(B)	0	0	0	0	0	0	0	0.00%

- MCP** Market Clearing Price (€/MWh)
- PPT** Priority Price-Taking
- HBD** Hybrid
- BLK** Block
- CPL** Market Coupling Flow

### Trade's Volume Mix

	Sell - MWh	Buy - MWh	
<b>Lignite</b> (0.0%)	0	0	(0.0%)
<b>Crete Conv.</b> (0.0%)	0	0	(0.0%)
<b>Gas</b> (44.0%)	1,309	684	(23.0%)
<b>Hydro</b> (0.2%)	5	0	(0.0%)
<b>Imports</b> (24.7%)	733		
<b>RES</b> (4.9%)	145	425	(14.3%)
<b>Crete RES</b> (0.0%)	0	0	(0.0%)
<b>BESS</b> (0.9%)	27	7	(0.2%)
<b>HV Load</b> (20.0%)	595	0	(0.0%)
<b>MV Load</b> (0.7%)	20	120	(4.0%)
<b>LV Load</b> (4.7%)	141	213	(7.2%)
<b>Crete Load</b> (0.0%)	0	0	(0.0%)
<b>Pumping</b> (0.0%)	0	0	(0.0%)
<b>Exports</b>		1,526	(51.3%)
<b>Sys.Losses</b> (0.0%)	0	0	(0.0%)
<b>D/R Load</b> (0.0%)	0	0	(0.0%)

