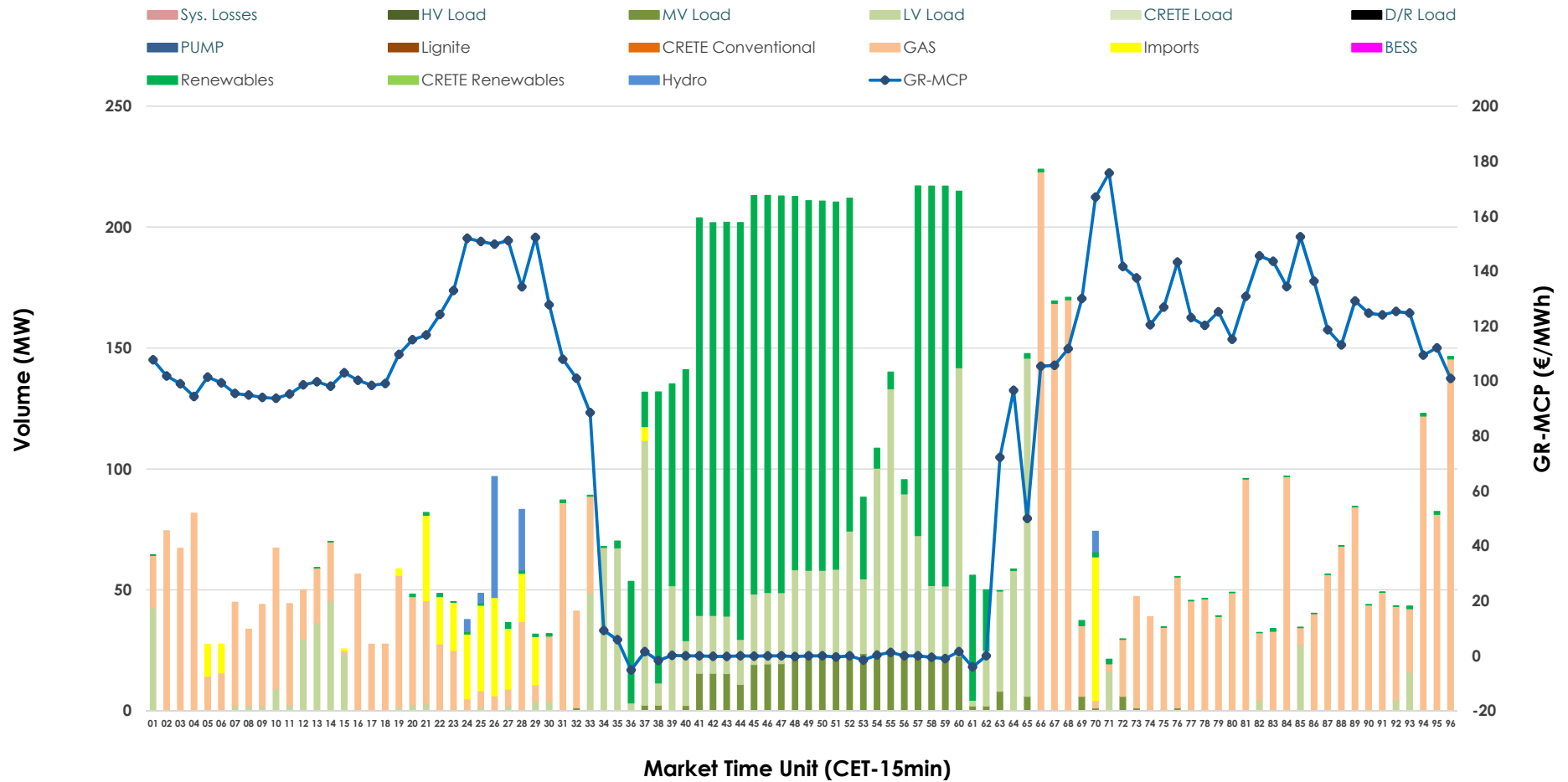


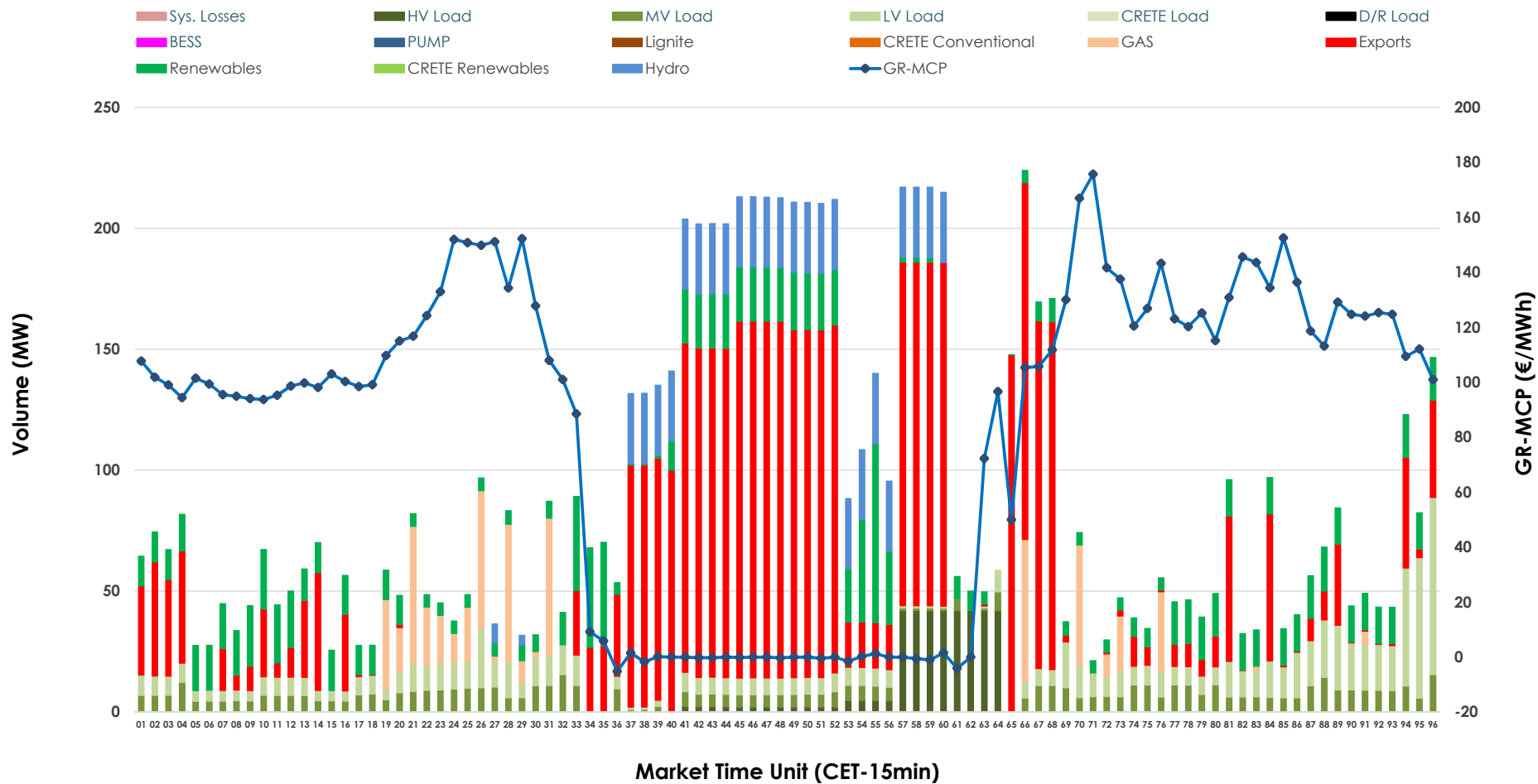


IDA '1' Market Outlook

26.03.2026 IDA '1' Market - Sell



26.03.2026 IDA '1' Market - Buy



GR Bidding Zone Weekly Figures

Delivery Day	20.03	21.03	22.03	23.03	24.03	25.03	26.03
	↗ 7%	↘ -13%	↘ -10%	↗ 7%	↘ -26%	↘ -29%	↗ 7%
Avg.MCP (€/MWh)	107.18	93.13	83.38	146.60	108.40	77.08	82.14
Max.MCP (€/MWh)	246.73	167.26	192.93	279.92	206.78	206.42	175.68
Min.MCP (€/MWh)	13.00	-8.88	-11.08	62.90	9.41	-8.09	-5.14
	↗ 192%	↘ -49%			↘ -26%	↗ 26%	↗ 15%
Tot.Vol(GWh)	7.69	3.90	N/M	4.08	3.04	3.82	4.41

Trades by Order Type

Delivery Day		20.03	21.03	22.03	23.03	24.03	25.03	26.03	
Ord Price Type		Sell & Buy Trades in (GWh) per Price Type							(%)
PPT	(S)	0.000	0.000	0.000	0.000	0.000	0.000	0.000	0.00%
HBD	(S)	3.581	1.854	0.000	1.492	1.145	1.727	2.119	96.18%
BLK	(S)	0.000	0.000	0.000	0.000	0.000	0.000	0.000	0.00%
CPL	(S)	0.263	0.097	0.000	0.546	0.374	0.185	0.084	3.82%
PPT	(B)	0.000	0.000	0.000	0.000	0.000	0.000	0.000	0.00%
HBD	(B)	3.175	1.790	0.000	1.585	1.063	1.606	1.166	52.94%
BLK	(B)	0.000	0.000	0.000	0.000	0.000	0.000	0.000	0.00%
CPL	(B)	0.669	0.161	0.000	0.453	0.455	0.305	1.037	47.06%
		Sell & Buy Orders Traded per Price Type							(%)
PPT	(S)	0	0	0	0	0	0	0	0.00%
HBD	(S)	269	102	208	219	267	234	203	100.00%
BLK	(S)	0	0	0	0	0	0	0	0.00%
PPT	(B)	0	0	0	0	0	0	0	0.00%
HBD	(B)	988	824	755	773	794	865	738	100.00%
BLK	(B)	0	0	0	0	0	0	0	0.00%

- MCP** Market Clearing Price (€/MWh)
- PPT** Priority Price-Taking
- HBD** Hybrid
- BLK** Block
- CPL** Market Coupling Flow

Trade's Volume Mix

		Sell - MWh	Buy - MWh	
Lignite	(0.0%)	0	0	(0.0%)
Crete Conv.	(0.0%)	0	0	(0.0%)
Gas	(35.3%)	779	139	(6.3%)
Hydro	(1.0%)	23	177	(8.0%)
Imports	(3.8%)	84		
RES	(34.0%)	749	351	(16.0%)
Crete RES	(0.0%)	0	0	(0.0%)
BESS	(0.0%)	0	0	(0.0%)
HV Load	(0.0%)	0	95	(4.3%)
MV Load	(5.3%)	117	161	(7.3%)
LV Load	(20.5%)	452	243	(11.0%)
Crete Load	(0.0%)	0	0	(0.0%)
Pumping	(0.0%)	0	0	(0.0%)
Exports			1,037	(47.1%)
Sys.Losses	(0.0%)	0	0	(0.0%)
D/R Load	(0.0%)	0	0	(0.0%)

