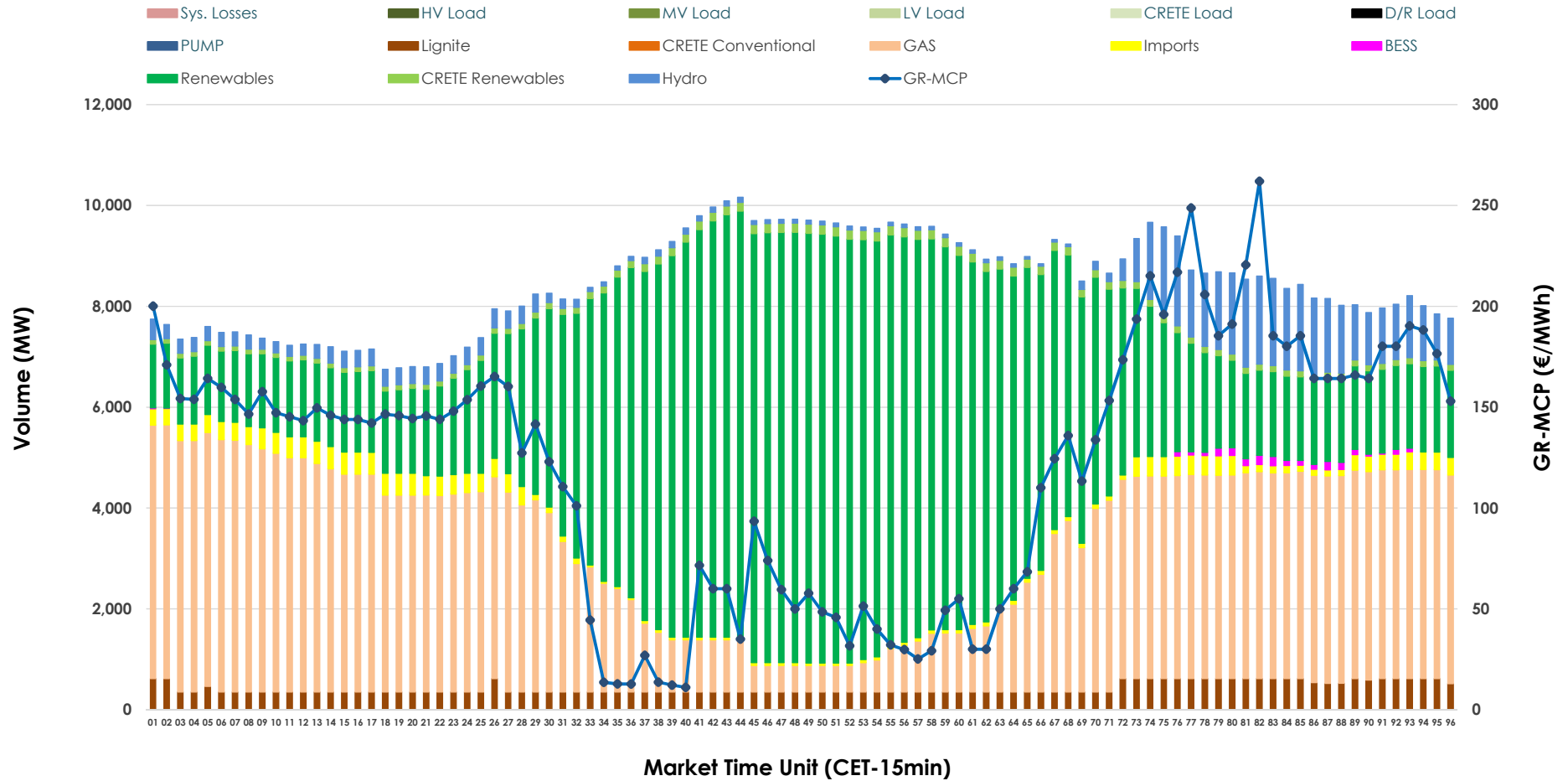


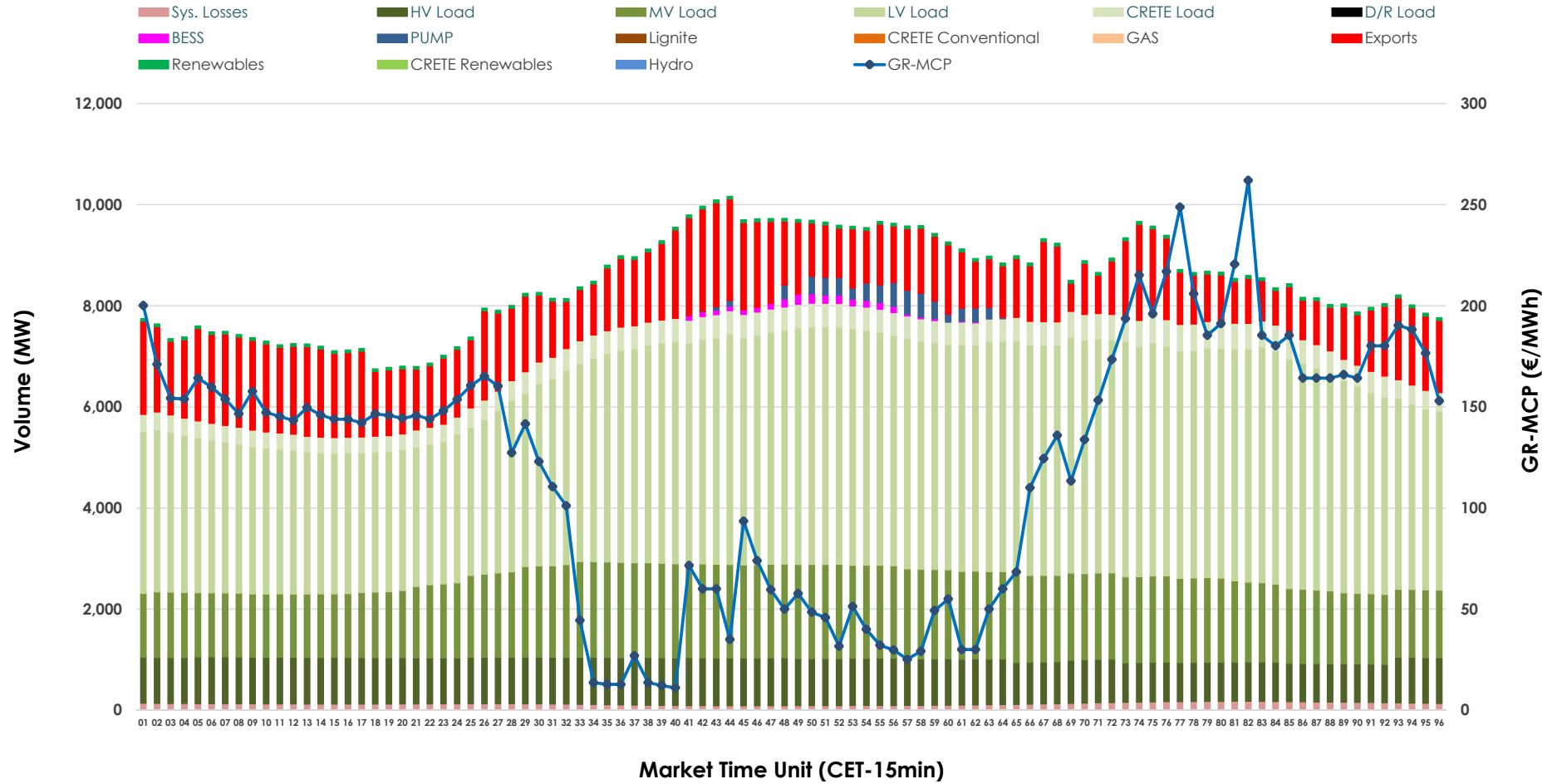


Day-Ahead Market Outlook

25.06.2026 Day-Ahead Market - Sell



25.06.2026 Day-Ahead Market - Buy



GR Bidding Zone Weekly Figures

Delivery Day	19.06	20.06	21.06	22.06	23.06	24.06	25.06
	➔ 0%	👇 -10%	👇 -1%	👆 21%	👆 49%	👆 13%	👇 -13%
Avg.MCP (€/MWh)	76.84	69.40	68.43	82.87	123.69	139.85	121.33
Max.MCP (€/MWh)	150.05	143.77	145.91	191.08	298.03	300.00	262.00
Min.MCP (€/MWh)	-0.01	-0.02	-1.00	-0.01	0.00	40.00	11.09
	➔ 1%	👇 -5%	👇 -3%	👆 10%	👆 1%	➔ -1%	👆 1%
Tot.Vol(GWh)	394.14	373.56	360.69	398.29	403.96	401.62	406.63

Trades by Order Type

Delivery Day		19.06	20.06	21.06	22.06	23.06	24.06	25.06	
Ord Price Type		Sell & Buy Trades in (GWh) per Price Type							(%)
PPT	(S)	82.897	83.379	83.637	81.817	71.841	63.403	66.832	32.87%
HBD	(S)	84.108	75.272	67.229	87.242	90.967	82.325	86.427	42.51%
BLK	(S)	30.010	28.129	29.177	29.167	37.544	52.636	47.369	23.30%
CPL	(S)	0.053	0.000	0.303	0.919	1.628	2.445	2.690	1.32%
PPT	(B)	17.703	17.500	16.256	17.878	17.854	18.089	18.356	9.03%
HBD	(B)	152.606	141.182	132.687	155.517	162.194	160.856	164.810	81.06%
BLK	(B)	0.000	0.000	0.000	0.000	0.000	0.000	0.000	0.00%
CPL	(B)	26.758	28.098	31.403	25.750	21.932	21.864	20.151	9.91%
		Sell & Buy Orders Traded per Price Type							(%)
PPT	(S)	1607	1669	1654	1652	1668	1685	1752	31.07%
HBD	(S)	3327	3083	2836	3199	3750	3993	3869	68.62%
BLK	(S)	14	15	14	10	16	23	17	0.30%
PPT	(B)	2411	2407	2448	2443	2432	2392	2503	37.82%
HBD	(B)	4043	4044	3852	4013	3956	3854	4116	62.18%
BLK	(B)	0	0	0	0	0	0	0	0.00%

MCP Market Clearing Price (€/MWh)
PPT Priority Price-Taking
HBD Hybrid
BLK Block
CPL Market Coupling Flow

Trade's Volume Mix

	Sell - MWh	Buy - MWh	
Lignite (5.0%)	10,192	0	(0.0%)
Crete Conv. (0.0%)	0	0	(0.0%)
Gas (36.3%)	73,822	0	(0.0%)
Hydro (5.7%)	11,650	0	(0.0%)
Imports (2.5%)	5,135		
RES (48.6%)	98,831	1,296	(0.6%)
Crete RES (1.6%)	3,191	0	(0.0%)
BESS (0.2%)	497	558	(0.3%)
HV Load (0.0%)	0	21,227	(10.4%)
MV Load (0.0%)	0	38,534	(19.0%)
LV Load (0.0%)	0	94,962	(46.7%)
Crete Load (0.0%)	0	10,211	(5.0%)
Pumping (0.0%)	0	1,279	(0.6%)
Exports		32,203	(15.8%)
Sys.Losses (0.0%)	0	3,049	(1.5%)
D/R Load (0.0%)	0	0	(0.0%)

