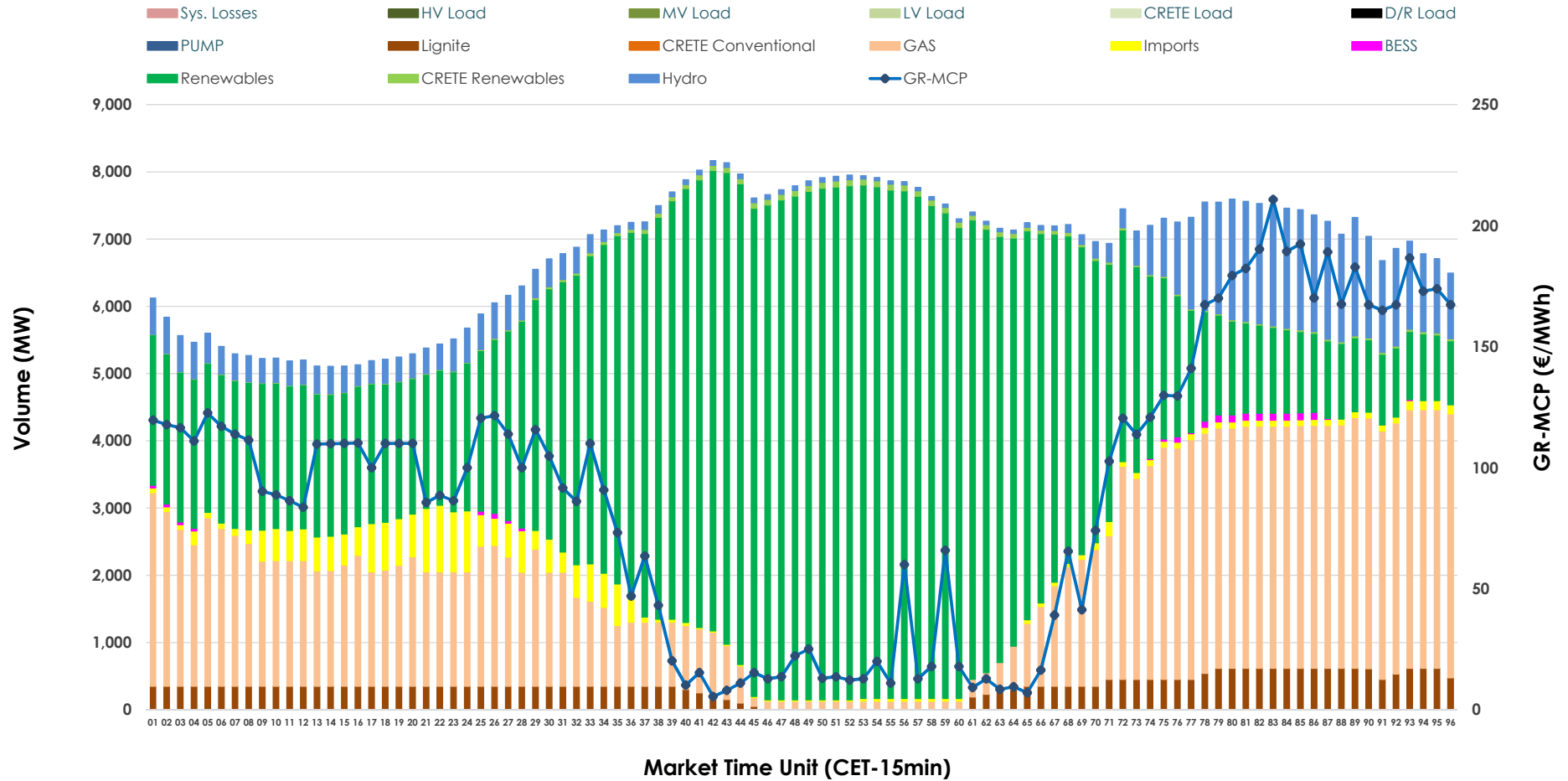


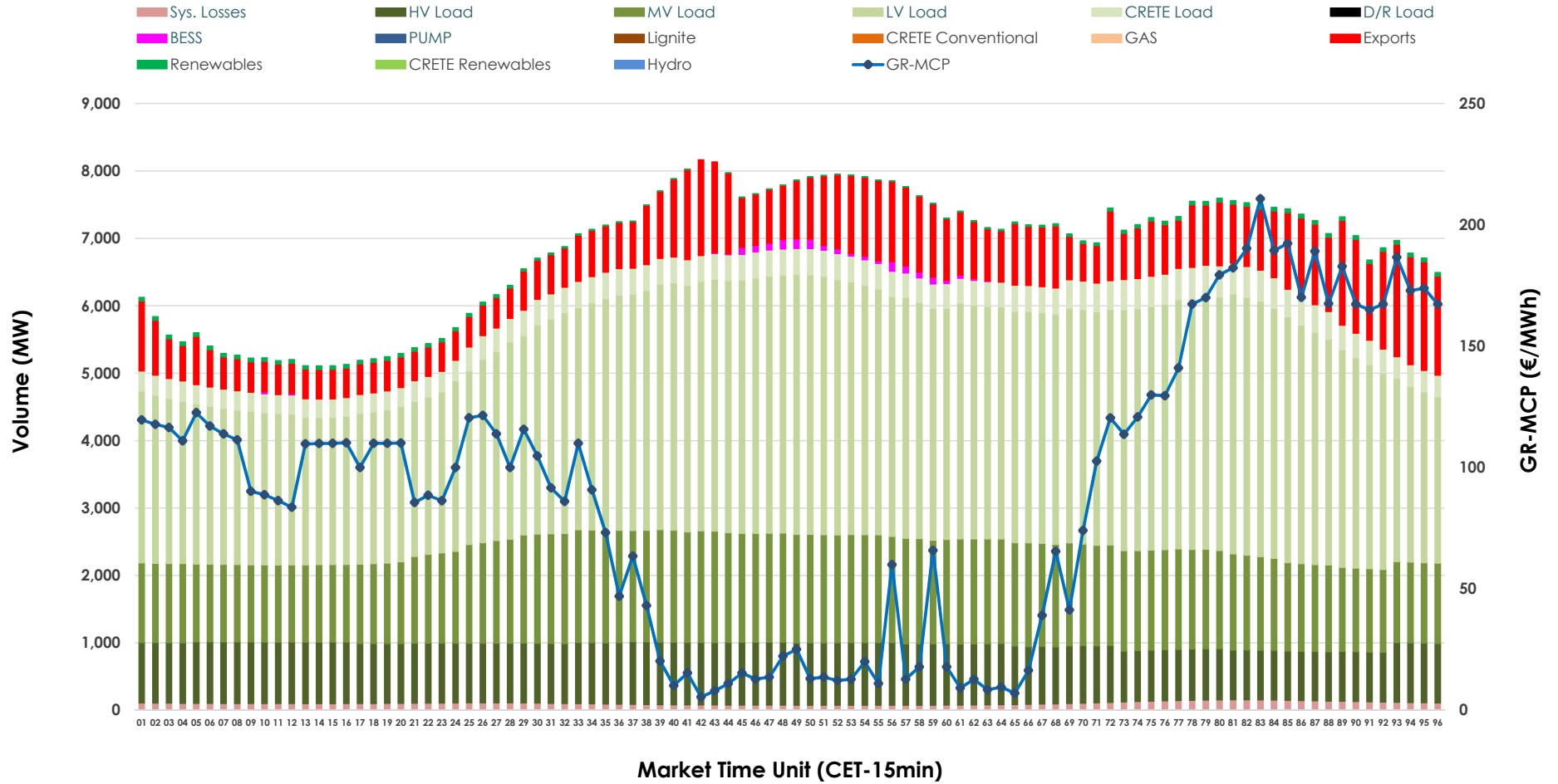


# Day-Ahead Market Outlook

04.06.2026 Day-Ahead Market - Sell



### 04.06.2026 Day-Ahead Market - Buy



### GR Bidding Zone Weekly Figures

Delivery Day	29.05	30.05	31.05	01.06	02.06	03.06	04.06
	👇 -7%	👆 11%	👇 -6%	👆 11%	👉 -1%	👇 -11%	👆 6%
<b>Avg.MCP (€/MWh)</b>	83.77	92.62	87.36	97.12	96.31	85.72	91.05
<b>Max.MCP (€/MWh)</b>	173.41	216.79	166.99	185.00	171.60	150.00	210.77
<b>Min.MCP (€/MWh)</b>	-0.01	-1.64	-0.01	0.00	0.00	0.00	5.44
	👆 4%	👇 -13%	👇 -3%	👆 11%	👆 5%	👆 3%	👇 -11%
<b>Tot.Vol(GWh)</b>	363.45	316.75	306.63	339.56	357.43	367.73	327.39

### Trades by Order Type

Delivery Day		29.05	30.05	31.05	01.06	02.06	03.06	04.06	
<b>Ord Price Type</b>		<b>Sell &amp; Buy Trades in (GWh) per Price Type</b>							<b>(%)</b>
<b>PPT</b>	(S)	71.215	67.224	63.025	62.576	64.590	68.089	64.441	39.37%
<b>HBD</b>	(S)	80.425	65.767	62.234	76.261	80.307	78.424	66.852	40.84%
<b>BLK</b>	(S)	30.087	25.384	28.056	30.945	33.821	37.350	29.365	17.94%
<b>CPL</b>	(S)	0.000	0.000	0.000	0.000	0.000	0.000	3.038	1.86%
<b>PPT</b>	(B)	15.607	15.170	13.900	15.188	15.274	15.118	16.151	9.87%
<b>HBD</b>	(B)	136.644	122.362	115.985	128.365	135.591	142.718	141.396	86.38%
<b>BLK</b>	(B)	0.000	0.000	0.000	0.000	0.000	0.000	0.000	0.00%
<b>CPL</b>	(B)	29.476	20.843	23.430	26.229	27.852	26.028	6.148	3.76%
		<b>Sell &amp; Buy Orders Traded per Price Type</b>							<b>(%)</b>
<b>PPT</b>	(S)	1765	1835	1814	1750	1754	1740	1703	32.07%
<b>HBD</b>	(S)	3295	3258	3170	3394	3467	3314	3595	67.69%
<b>BLK</b>	(S)	13	17	15	15	15	17	13	0.24%
<b>PPT</b>	(B)	2354	2346	2301	2384	2392	2388	2413	37.24%
<b>HBD</b>	(B)	4076	3982	3669	3831	3932	3986	4066	62.76%
<b>BLK</b>	(B)	0	0	0	0	0	0	0	0.00%

- MCP** Market Clearing Price (€/MWh)
- PPT** Priority Price-Taking
- HBD** Hybrid
- BLK** Block
- CPL** Market Coupling Flow

### Trade's Volume Mix

	Sell - MWh	Buy - MWh	
<b>Lignite</b> (4.9%)	8,047	0	(0.0%)
<b>Crete Conv.</b> (0.0%)	0	0	(0.0%)
<b>Gas</b> (27.3%)	44,659	0	(0.0%)
<b>Hydro</b> (7.9%)	12,861	0	(0.0%)
<b>Imports</b> (3.1%)	5,101		
<b>RES</b> (56.0%)	91,727	824	(0.5%)
<b>Crete RES</b> (0.6%)	934	0	(0.0%)
<b>BESS</b> (0.2%)	366	412	(0.3%)
<b>HV Load</b> (0.0%)	0	20,873	(12.8%)
<b>MV Load</b> (0.0%)	0	34,295	(21.0%)
<b>LV Load</b> (0.0%)	0	75,870	(46.3%)
<b>Crete Load</b> (0.0%)	0	8,793	(5.4%)
<b>Pumping</b> (0.0%)	0	0	(0.0%)
<b>Exports</b>		20,151	(12.3%)
<b>Sys.Losses</b> (0.0%)	0	2,477	(1.5%)
<b>D/R Load</b> (0.0%)	0	0	(0.0%)

