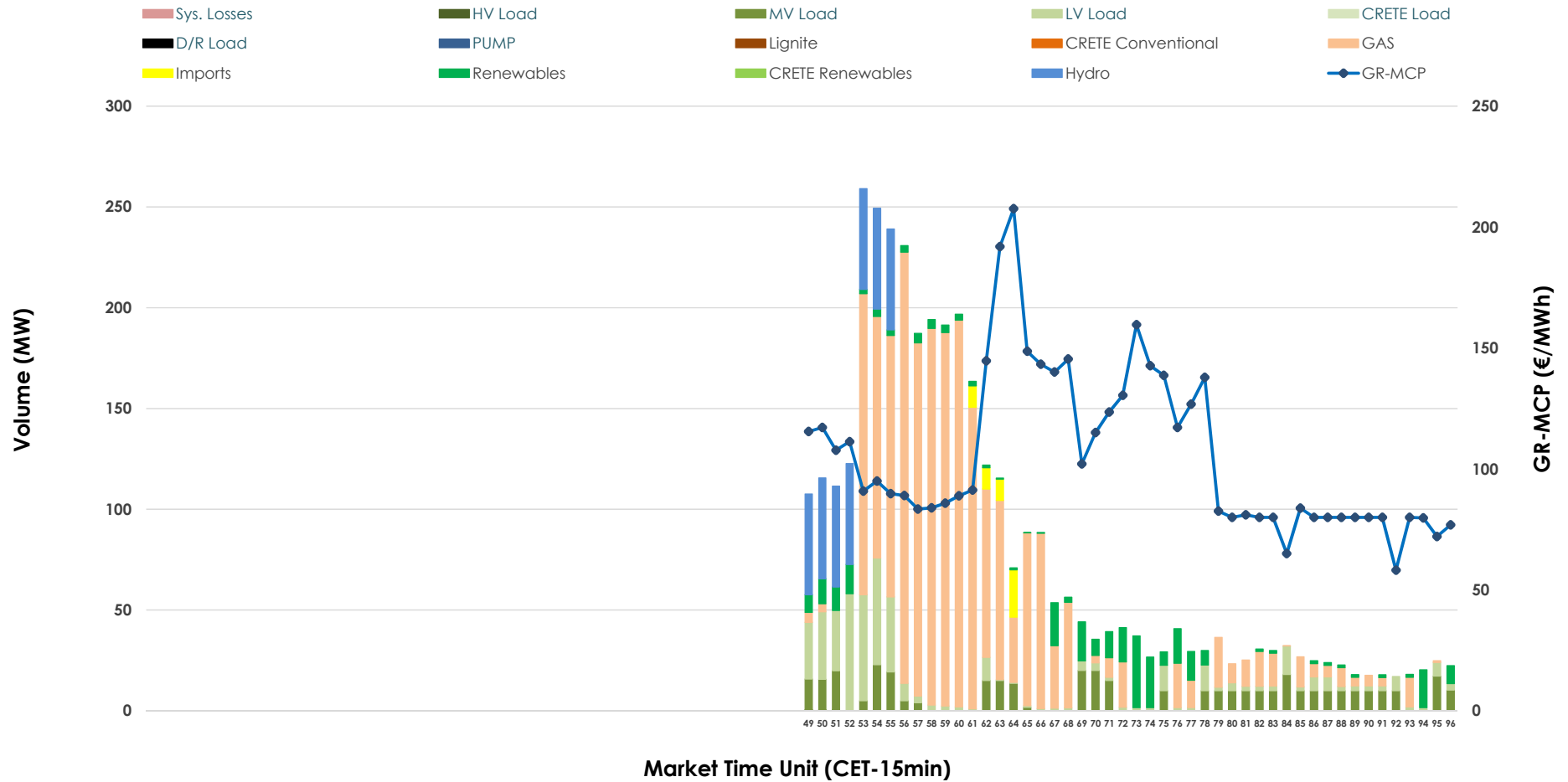


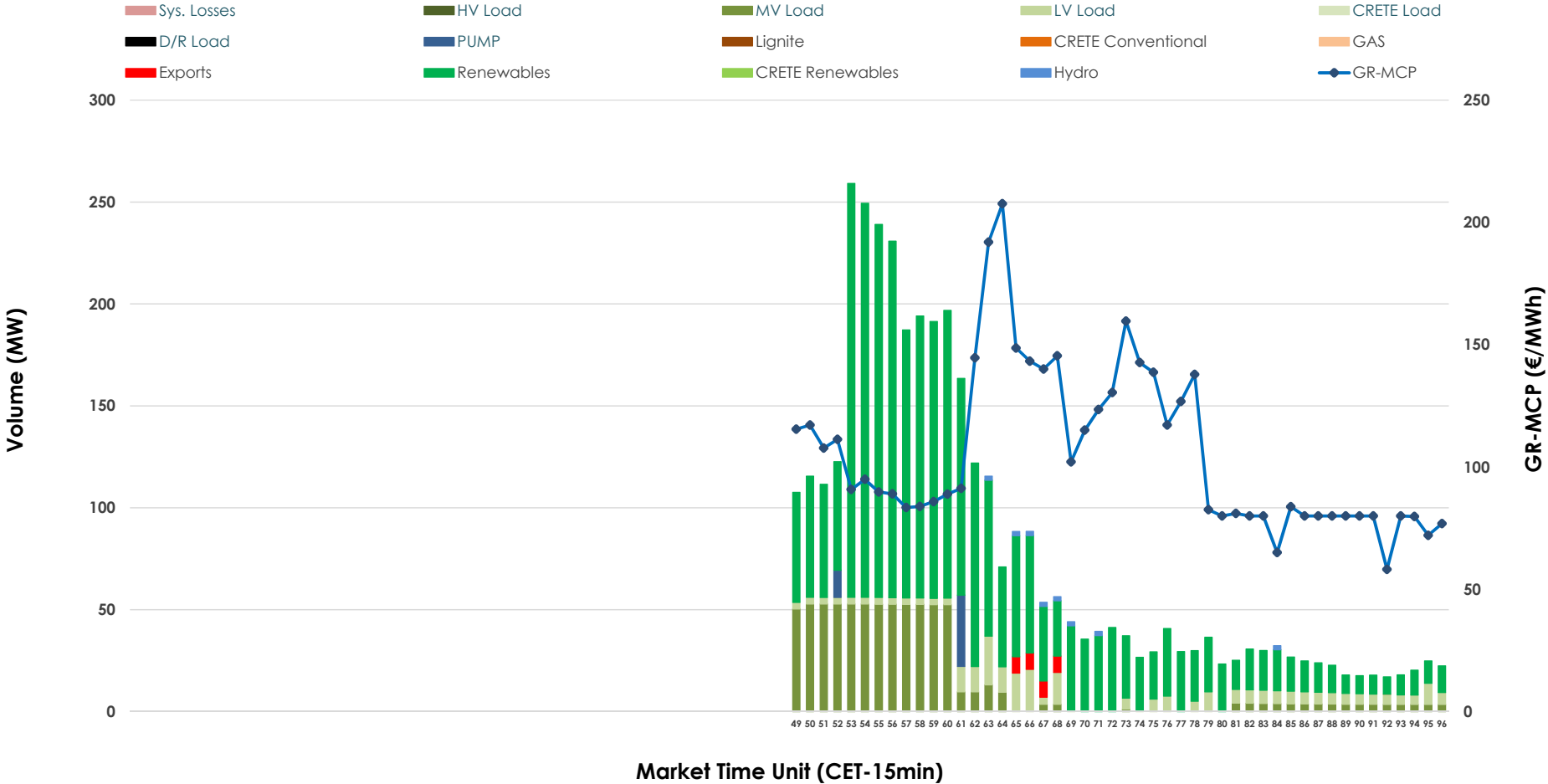


# IDA '3' Market Outlook

26.01.2026 IDA '3' Market - Sell



### 26.01.2026 IDA '3' Market - Buy



### GR Bidding Zone Weekly Figures

Delivery Day	20.01	21.01	22.01	23.01	24.01	25.01	26.01
	↗ 14%	↕ 46%	↕ 50%	↘ -37%	↘ -22%	↘ -26%	↗ 6%
<b>Avg.MCP (€/MWh)</b>	125.64	183.28	275.40	173.58	134.62	99.17	105.52
<b>Max.MCP (€/MWh)</b>	214.20	253.03	445.00	275.57	158.82	138.36	207.65
<b>Min.MCP (€/MWh)</b>	41.02	128.93	117.20	103.10	103.80	2.90	58.16
	↕ 93%	↗ 4%	↗ 12%	↗ 14%	↘ -16%	↗ 6%	↘ -23%
<b>Tot.Vol(GWh)</b>	2.05	2.14	2.39	2.73	2.30	2.43	1.87

### Trades by Order Type

Delivery Day		20.01	21.01	22.01	23.01	24.01	25.01	26.01	
<b>Ord Price Type</b>		<b>Sell &amp; Buy Trades in (GWh) per Price Type</b>							<b>(%)</b>
<b>PPT</b>	(S)	0.000	0.000	0.000	0.000	0.000	0.000	0.000	0.00%
<b>HBD</b>	(S)	1.017	0.126	1.029	1.110	0.798	0.682	0.924	98.53%
<b>BLK</b>	(S)	0.000	0.000	0.000	0.000	0.000	0.000	0.000	0.00%
<b>CPL</b>	(S)	0.009	0.943	0.166	0.254	0.351	0.532	0.014	1.47%
<b>PPT</b>	(B)	0.000	0.000	0.000	0.000	0.000	0.000	0.000	0.00%
<b>HBD</b>	(B)	0.468	0.893	0.616	0.295	0.653	1.013	0.929	99.15%
<b>BLK</b>	(B)	0.000	0.000	0.000	0.000	0.000	0.000	0.000	0.00%
<b>CPL</b>	(B)	0.558	0.176	0.578	1.069	0.496	0.201	0.008	0.85%
		<b>Sell &amp; Buy Orders Traded per Price Type</b>							<b>(%)</b>
<b>PPT</b>	(S)	0	0	0	0	0	0	0	0.00%
<b>HBD</b>	(S)	241	115	222	233	249	195	193	100.00%
<b>BLK</b>	(S)	0	0	0	0	0	0	0	0.00%
<b>PPT</b>	(B)	0	0	0	0	0	0	0	0.00%
<b>HBD</b>	(B)	113	252	141	139	189	219	306	100.00%
<b>BLK</b>	(B)	0	0	0	0	0	0	0	0.00%

- MCP** Market Clearing Price (€/MWh)
- PPT** Priority Price-Taking
- HBD** Hybrid
- BLK** Block
- CPL** Market Coupling Flow

### Trade's Volume Mix

		Sell - MWh		Buy - MWh	
<b>Lignite</b>	(0.0%)	0	0	0	(0.0%)
<b>Crete Conv.</b>	(0.0%)	0	0	0	(0.0%)
<b>Gas</b>	(58.4%)	548	0	0	(0.0%)
<b>Hydro</b>	(9.3%)	88	4	4	(0.4%)
<b>Imports</b>	(1.5%)	14	0	0	(0.0%)
<b>RES</b>	(8.2%)	76	656	656	(70.0%)
<b>Crete RES</b>	(0.0%)	0	0	0	(0.0%)
<b>HV Load</b>	(0.0%)	0	0	0	(0.0%)
<b>MV Load</b>	(10.7%)	101	185	185	(19.7%)
<b>LV Load</b>	(11.9%)	111	72	72	(7.7%)
<b>Crete Load</b>	(0.0%)	0	0	0	(0.0%)
<b>Pumping</b>	(0.0%)	0	12	12	(1.3%)
<b>Exports</b>		0	8	8	(0.9%)
<b>Sys.Losses</b>	(0.0%)	0	0	0	(0.0%)
<b>D/R Load</b>	(0.0%)	0	0	0	(0.0%)

