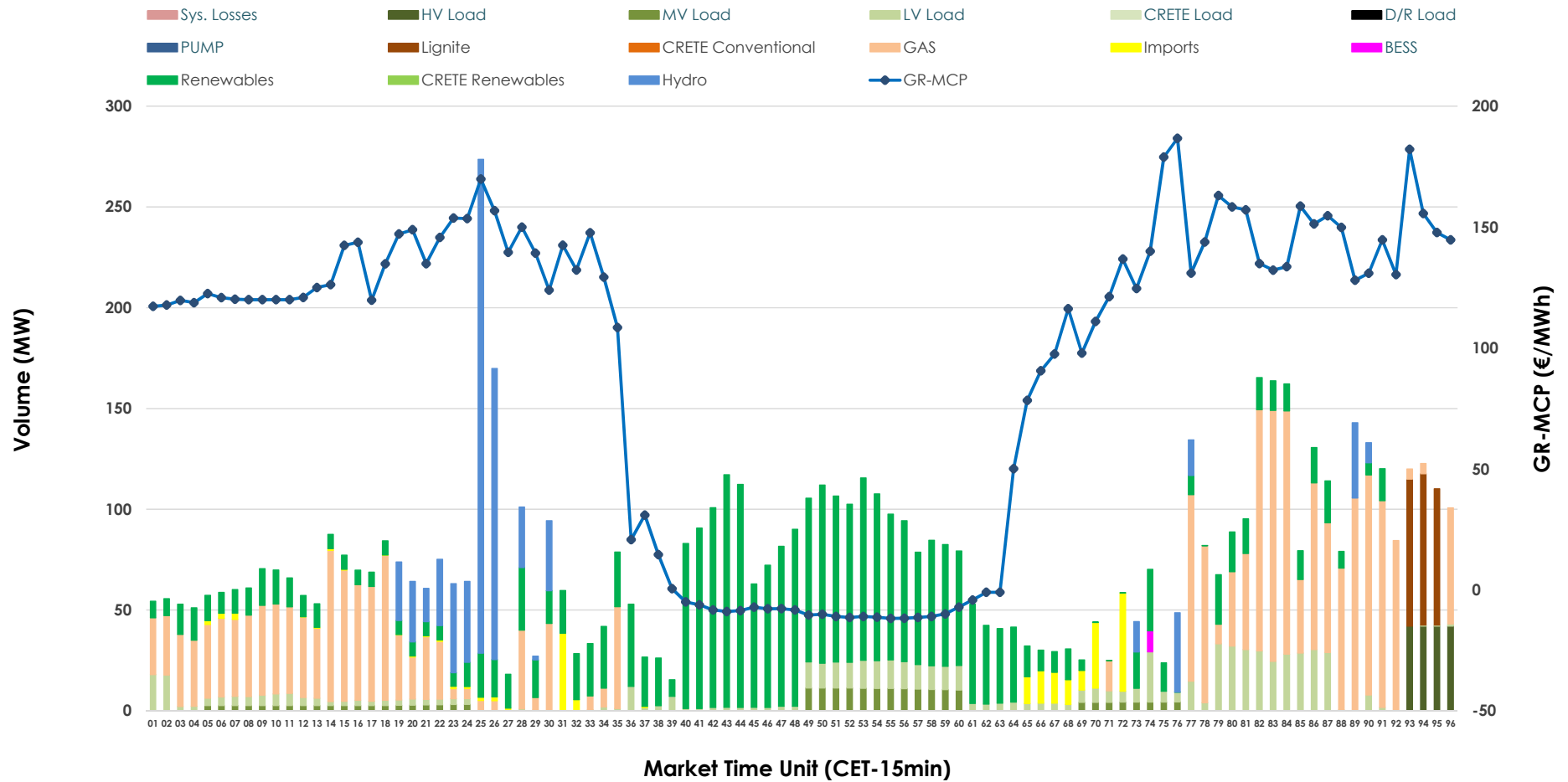


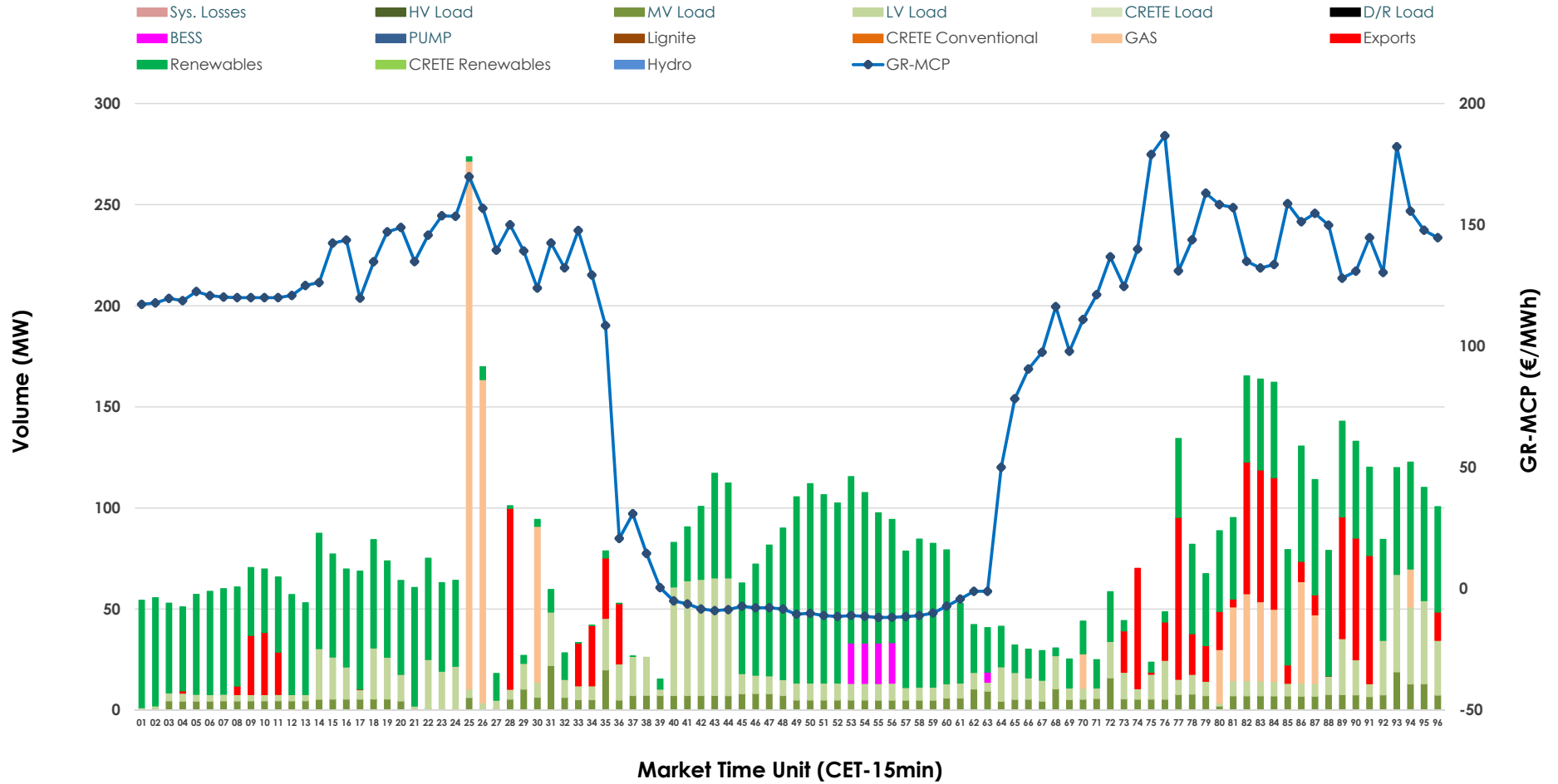


# IDA '1' Market Outlook

13.05.2026 IDA '1' Market - Sell



### 13.05.2026 IDA '1' Market - Buy



### GR Bidding Zone Weekly Figures

Delivery Day	07.05	08.05	09.05	10.05	11.05	12.05	13.05
	↗ 20%	↘ 1%	↘ -11%	↘ -17%	↗ 6%	↘ -16%	↗ 16%
<b>Avg.MCP (€/MWh)</b>	121.19	122.42	108.76	90.58	96.19	80.50	93.55
<b>Max.MCP (€/MWh)</b>	183.77	172.30	227.06	202.09	194.26	202.70	186.71
<b>Min.MCP (€/MWh)</b>	21.99	61.50	-7.61	-7.78	-8.55	-0.21	-11.78
	↗ 59%	↘ -3%	↗ 0%	↘ -15%	↘ -1%	↗ 9%	↘ -5%
<b>Tot.Vol(GWh)</b>	4.46	4.31	4.33	3.69	3.64	3.97	3.76

### Trades by Order Type

Delivery Day		07.05	08.05	09.05	10.05	11.05	12.05	13.05	
<b>Ord Price Type</b>		<b>Sell &amp; Buy Trades in (GWh) per Price Type</b>							<b>(%)</b>
<b>PPT</b>	(S)	0.000	0.000	0.000	0.000	0.000	0.000	0.000	0.00%
<b>HBD</b>	(S)	1.499	1.993	1.767	1.660	1.641	1.889	1.826	97.19%
<b>BLK</b>	(S)	0.000	0.000	0.000	0.000	0.000	0.000	0.000	0.00%
<b>CPL</b>	(S)	0.732	0.163	0.400	0.187	0.178	0.096	0.053	2.81%
<b>PPT</b>	(B)	0.000	0.000	0.000	0.000	0.000	0.000	0.000	0.00%
<b>HBD</b>	(B)	2.182	1.176	1.927	1.469	1.655	1.804	1.642	87.37%
<b>BLK</b>	(B)	0.000	0.000	0.000	0.000	0.000	0.000	0.000	0.00%
<b>CPL</b>	(B)	0.049	0.980	0.240	0.378	0.164	0.180	0.237	12.63%
		<b>Sell &amp; Buy Orders Traded per Price Type</b>							<b>(%)</b>
<b>PPT</b>	(S)	0	0	0	0	0	0	0	0.00%
<b>HBD</b>	(S)	234	405	360	310	372	271	447	100.00%
<b>BLK</b>	(S)	0	0	0	0	0	0	0	0.00%
<b>PPT</b>	(B)	0	0	0	0	0	0	0	0.00%
<b>HBD</b>	(B)	592	532	554	945	738	677	653	100.00%
<b>BLK</b>	(B)	0	0	0	0	0	0	0	0.00%

- MCP** Market Clearing Price (€/MWh)
- PPT** Priority Price-Taking
- HBD** Hybrid
- BLK** Block
- CPL** Market Coupling Flow

### Trade's Volume Mix

	Sell - MWh	Buy - MWh	
<b>Lignite</b> (2.9%)	54	0	(0.0%)
<b>Crete Conv.</b> (0.0%)	0	0	(0.0%)
<b>Gas</b> (32.9%)	618	200	(10.6%)
<b>Hydro</b> (10.2%)	192	0	(0.0%)
<b>Imports</b> (2.8%)	53		
<b>RES</b> (36.6%)	688	942	(50.1%)
<b>Crete RES</b> (0.0%)	0	0	(0.0%)
<b>BESS</b> (0.1%)	3	21	(1.1%)
<b>HV Load</b> (2.2%)	42	0	(0.0%)
<b>MV Load</b> (2.9%)	55	154	(8.2%)
<b>LV Load</b> (9.3%)	175	325	(17.3%)
<b>Crete Load</b> (0.0%)	0	0	(0.0%)
<b>Pumping</b> (0.0%)	0	0	(0.0%)
<b>Exports</b>		237	(12.6%)
<b>Sys.Losses</b> (0.0%)	0	0	(0.0%)
<b>D/R Load</b> (0.0%)	0	0	(0.0%)

