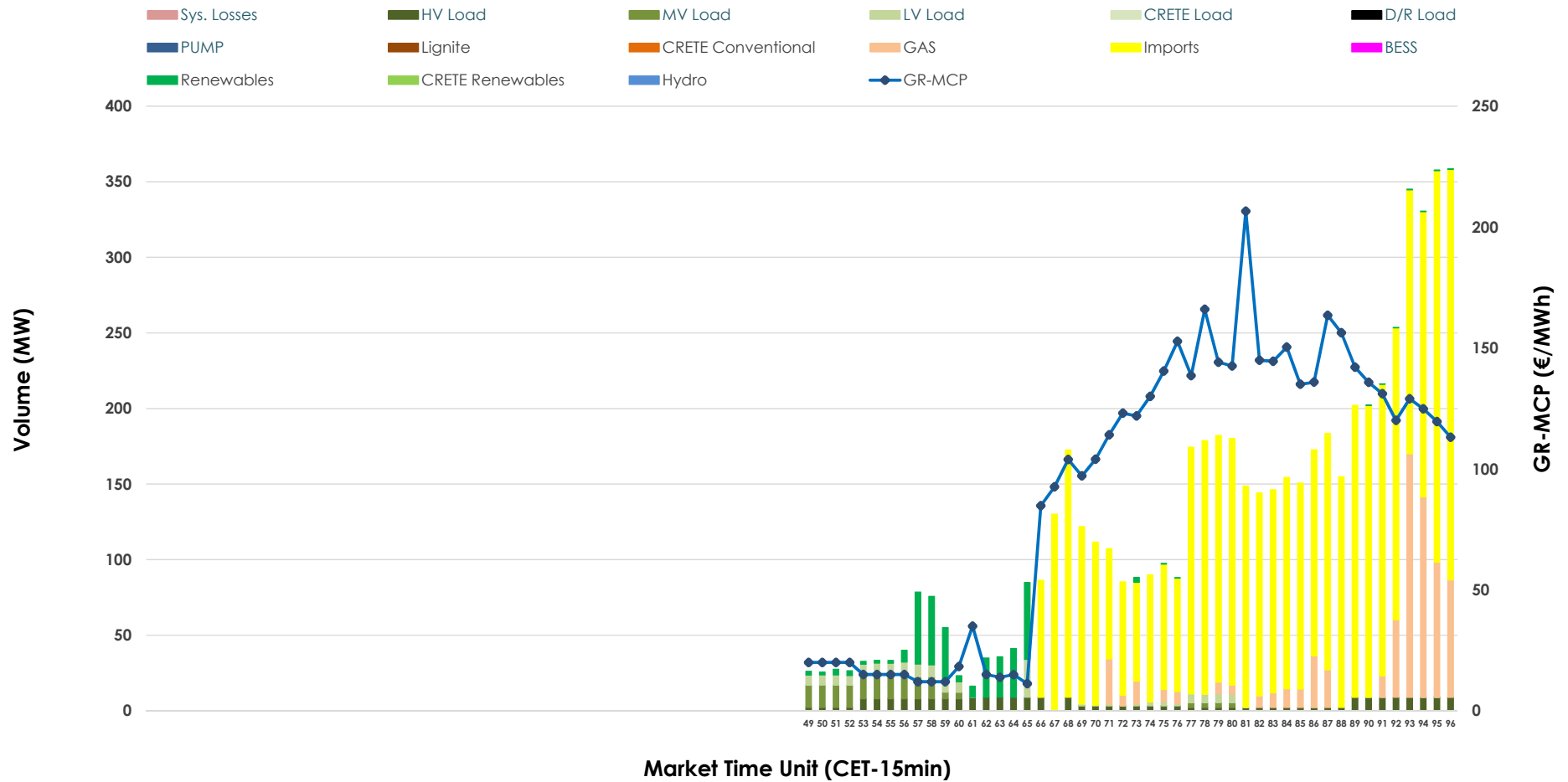


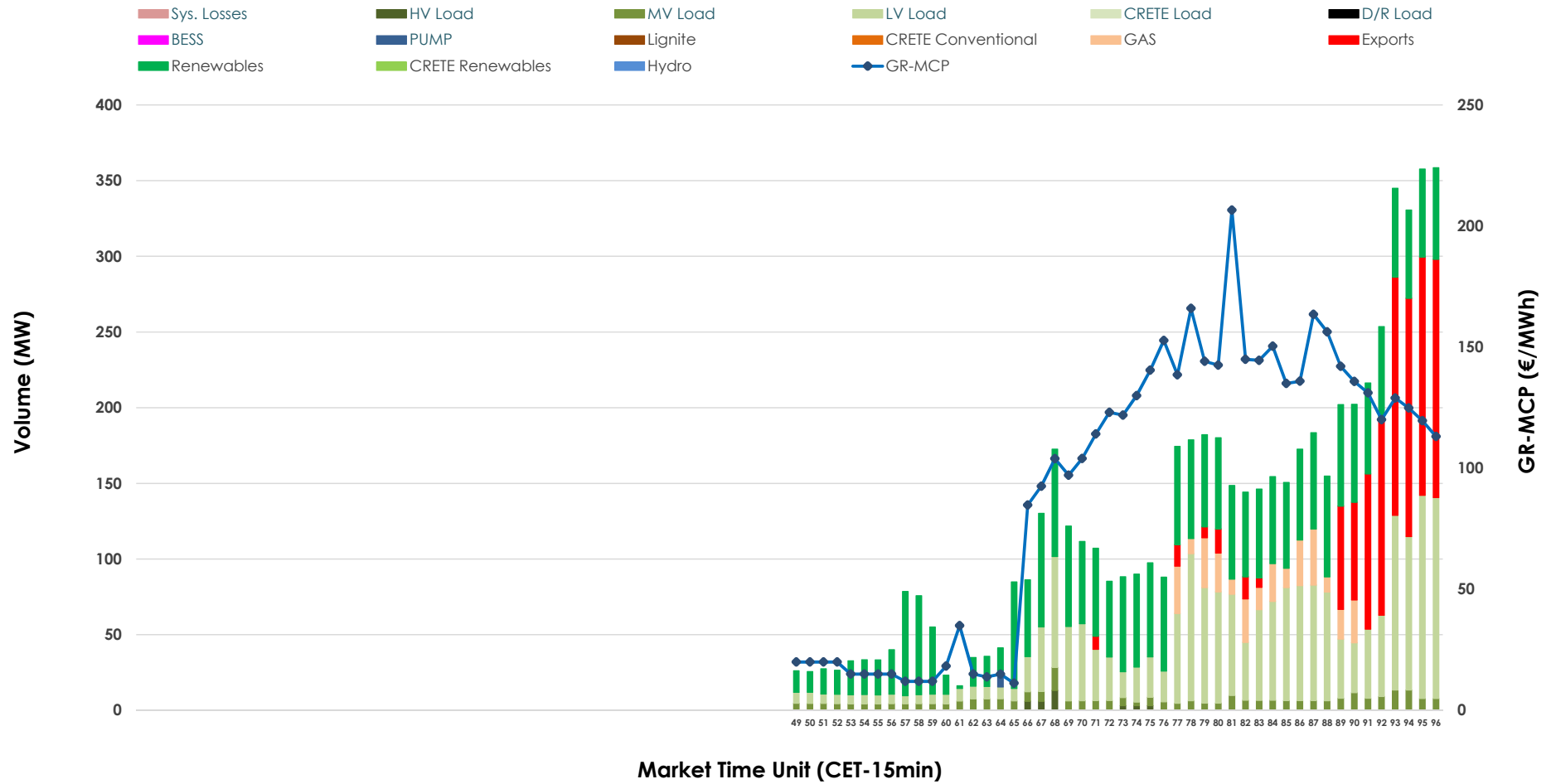


IDA '3' Market Outlook

16.04.2026 IDA '3' Market - Sell



16.04.2026 IDA '3' Market - Buy



GR Bidding Zone Weekly Figures

Delivery Day	10.04	11.04	12.04	13.04	14.04	15.04	16.04
	➔ 0%	👉 20%	👎 -18%	👉 24%	👆 40%	👎 -10%	👎 -29%
Avg.MCP (€/MWh)	83.51	99.89	81.48	101.24	141.87	128.24	91.53
Max.MCP (€/MWh)	184.91	176.97	162.05	170.39	267.95	175.20	206.60
Min.MCP (€/MWh)	-9.97	24.04	-1.89	4.68	79.90	84.00	11.22
	👆 54%	👉 27%	👎 -61%	👉 7%	👆 3%	👆 200%	👎 -39%
Tot.Vol(GWh)	3.06	3.89	1.52	1.63	1.67	5.00	3.05

Trades by Order Type

Delivery Day		10.04	11.04	12.04	13.04	14.04	15.04	16.04	
Ord Price Type		Sell & Buy Trades in (GWh) per Price Type							(%)
PPT	(S)	0.000	0.000	0.000	0.000	0.000	0.000	0.000	0.00%
HBD	(S)	1.338	0.419	0.568	0.675	0.587	0.184	0.399	26.11%
BLK	(S)	0.000	0.000	0.000	0.000	0.000	0.000	0.000	0.00%
CPL	(S)	0.192	1.528	0.193	0.139	0.248	2.318	1.128	73.89%
PPT	(B)	0.000	0.000	0.000	0.000	0.000	0.000	0.000	0.00%
HBD	(B)	0.392	1.885	0.426	0.551	0.280	2.194	1.261	82.61%
BLK	(B)	0.000	0.000	0.000	0.000	0.000	0.000	0.000	0.00%
CPL	(B)	1.138	0.062	0.335	0.263	0.554	0.308	0.265	17.39%
		Sell & Buy Orders Traded per Price Type							(%)
PPT	(S)	0	0	0	0	0	0	0	0.00%
HBD	(S)	176	161	209	116	265	111	185	100.00%
BLK	(S)	0	0	0	0	0	0	0	0.00%
PPT	(B)	0	0	0	0	0	0	0	0.00%
HBD	(B)	131	347	172	186	134	522	525	100.00%
BLK	(B)	0	0	0	0	0	0	0	0.00%

- MCP** Market Clearing Price (€/MWh)
- PPT** Priority Price-Taking
- HBD** Hybrid
- BLK** Block
- CPL** Market Coupling Flow

Trade's Volume Mix

	Sell - MWh	Buy - MWh	
Lignite (0.0%)	0	0	(0.0%)
Crete Conv. (0.0%)	0	0	(0.0%)
Gas (11.6%)	177	79	(5.2%)
Hydro (0.0%)	0	0	(0.0%)
Imports (73.9%)	1,128		
RES (5.0%)	76	592	(38.8%)
Crete RES (0.0%)	0	0	(0.0%)
BESS (0.0%)	0	0	(0.0%)
HV Load (4.3%)	65	9	(0.6%)
MV Load (2.8%)	42	79	(5.2%)
LV Load (2.5%)	38	499	(32.7%)
Crete Load (0.0%)	0	0	(0.0%)
Pumping (0.0%)	0	3	(0.2%)
Exports		265	(17.4%)
Sys.Losses (0.0%)	0	0	(0.0%)
D/R Load (0.0%)	0	0	(0.0%)

