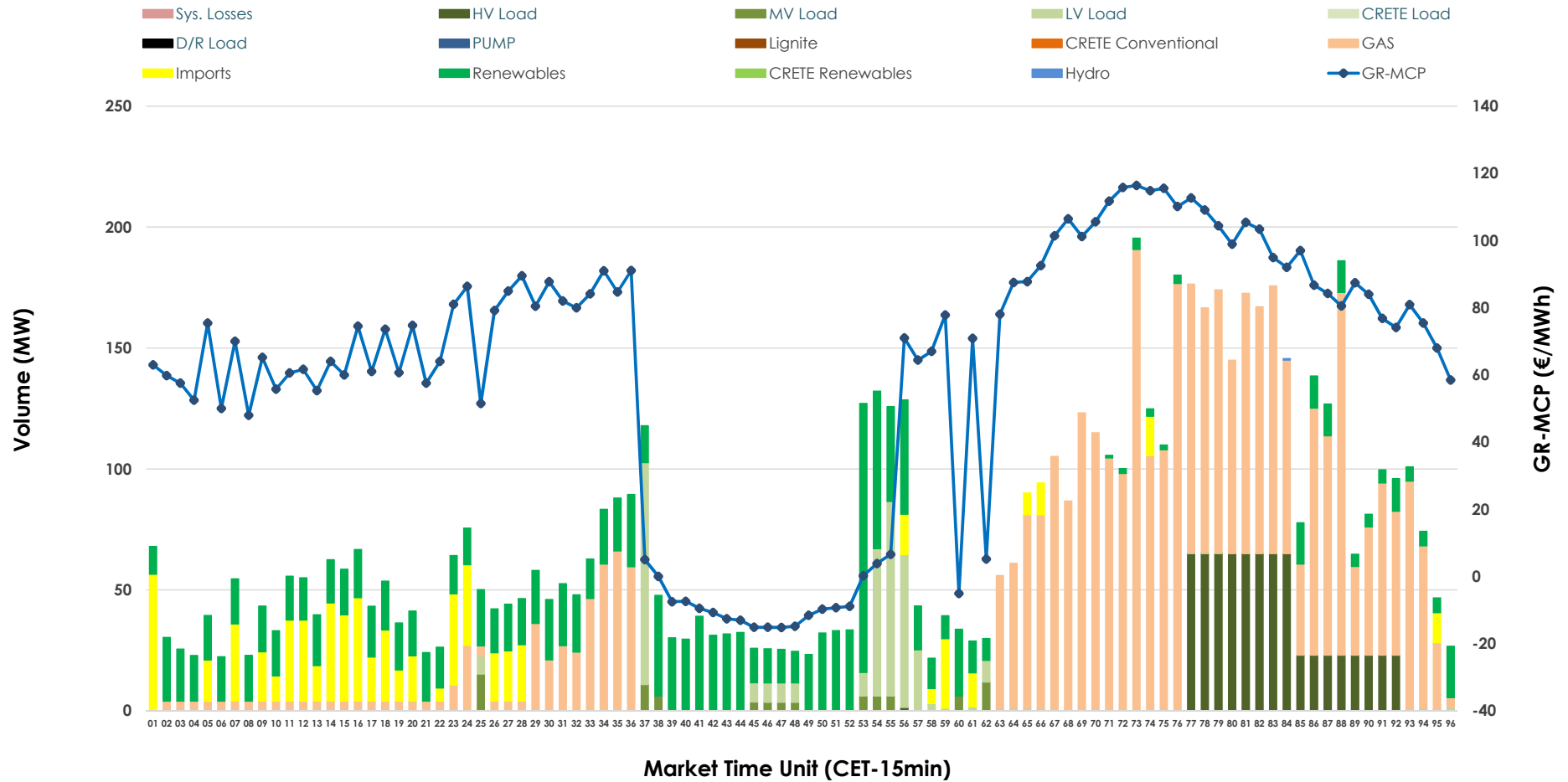


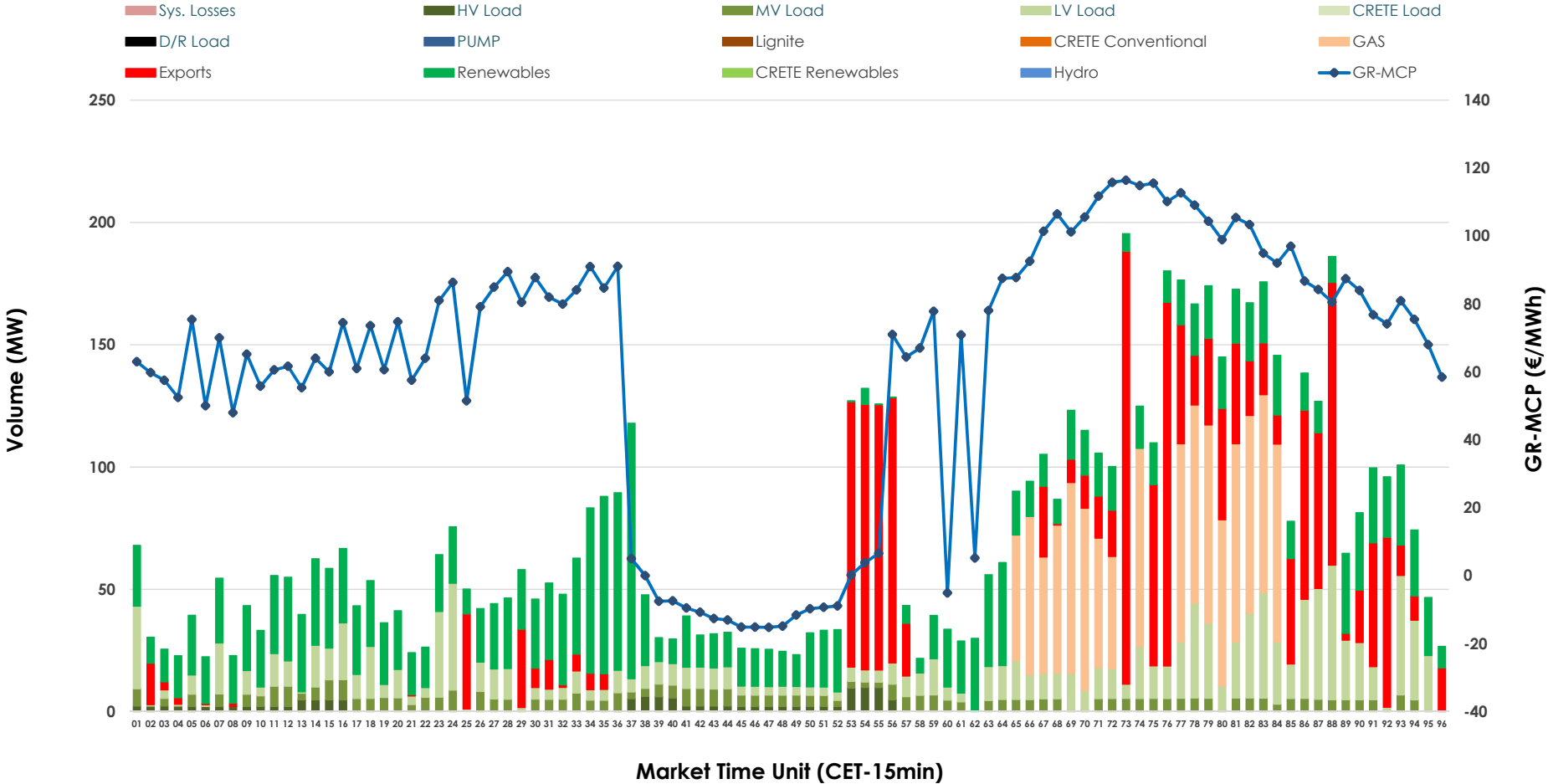


# IDA '1' Market Outlook

21.02.2026 IDA '1' Market - Sell



### 21.02.2026 IDA '1' Market - Buy



### GR Bidding Zone Weekly Figures

Delivery Day	15.02	16.02	17.02	18.02	19.02	20.02	21.02
	↓ -60%	↑ 155%	↘ -12%	↘ -20%	↑ 44%	↘ 5%	↓ -13%
<b>Avg.MCP (€/MWh)</b>	26.32	67.20	58.93	47.19	67.79	71.20	61.92
<b>Max.MCP (€/MWh)</b>	95.58	158.98	158.86	172.62	173.45	137.36	116.41
<b>Min.MCP (€/MWh)</b>	-5.00	-18.37	-11.05	-21.98	-25.34	-12.13	-15.19
	↓ -43%	↑ 40%	↘ 20%	↓ -51%	↘ -4%	↘ -8%	↘ 24%
<b>Tot.Vol(GWh)</b>	3.90	5.47	6.57	3.22	3.09	2.85	3.53

### Trades by Order Type

Delivery Day		15.02	16.02	17.02	18.02	19.02	20.02	21.02	
<b>Ord Price Type</b>		<b>Sell &amp; Buy Trades in (GWh) per Price Type</b>							<b>(%)</b>
<b>PPT</b>	(S)	0.000	0.000	0.000	0.000	0.000	0.000	0.000	0.00%
<b>HBD</b>	(S)	1.951	2.634	3.176	1.505	1.278	1.316	1.597	90.46%
<b>BLK</b>	(S)	0.000	0.000	0.000	0.000	0.000	0.000	0.000	0.00%
<b>CPL</b>	(S)	0.000	0.100	0.110	0.104	0.266	0.110	0.168	9.54%
<b>PPT</b>	(B)	0.000	0.000	0.000	0.000	0.000	0.000	0.000	0.00%
<b>HBD</b>	(B)	1.797	2.555	1.507	1.359	1.184	1.153	1.312	74.33%
<b>BLK</b>	(B)	0.000	0.000	0.000	0.000	0.000	0.000	0.000	0.00%
<b>CPL</b>	(B)	0.155	0.178	1.779	0.250	0.361	0.273	0.453	25.67%
		<b>Sell &amp; Buy Orders Traded per Price Type</b>							<b>(%)</b>
<b>PPT</b>	(S)	0	0	0	0	0	0	0	0.00%
<b>HBD</b>	(S)	337	110	296	196	71	184	159	100.00%
<b>BLK</b>	(S)	0	0	0	0	0	0	0	0.00%
<b>PPT</b>	(B)	0	0	0	0	0	0	0	0.00%
<b>HBD</b>	(B)	420	786	537	670	734	983	673	100.00%
<b>BLK</b>	(B)	0	0	0	0	0	0	0	0.00%

**MCP** Market Clearing Price (€/MWh)  
**PPT** Priority Price-Taking  
**HBD** Hybrid  
**BLK** Block  
**CPL** Market Coupling Flow

### Trade's Volume Mix

	Sell - MWh	Buy - MWh	
<b>Lignite</b> (0.0%)	0	0	(0.0%)
<b>Crete Conv.</b> (0.0%)	0	0	(0.0%)
<b>Gas</b> (50.4%)	890	298	(16.9%)
<b>Hydro</b> (0.0%)	0	0	(0.0%)
<b>Imports</b> (9.5%)	168		
<b>RES</b> (23.2%)	410	556	(31.5%)
<b>Crete RES</b> (0.0%)	0	0	(0.0%)
<b>HV Load</b> (10.0%)	176	32	(1.8%)
<b>MV Load</b> (1.2%)	21	111	(6.3%)
<b>LV Load</b> (5.6%)	99	315	(17.9%)
<b>Crete Load</b> (0.0%)	0	0	(0.0%)
<b>Pumping</b> (0.0%)	0	0	(0.0%)
<b>Exports</b>		453	(25.7%)
<b>Sys.Losses</b> (0.0%)	0	0	(0.0%)
<b>D/R Load</b> (0.0%)	0	0	(0.0%)

