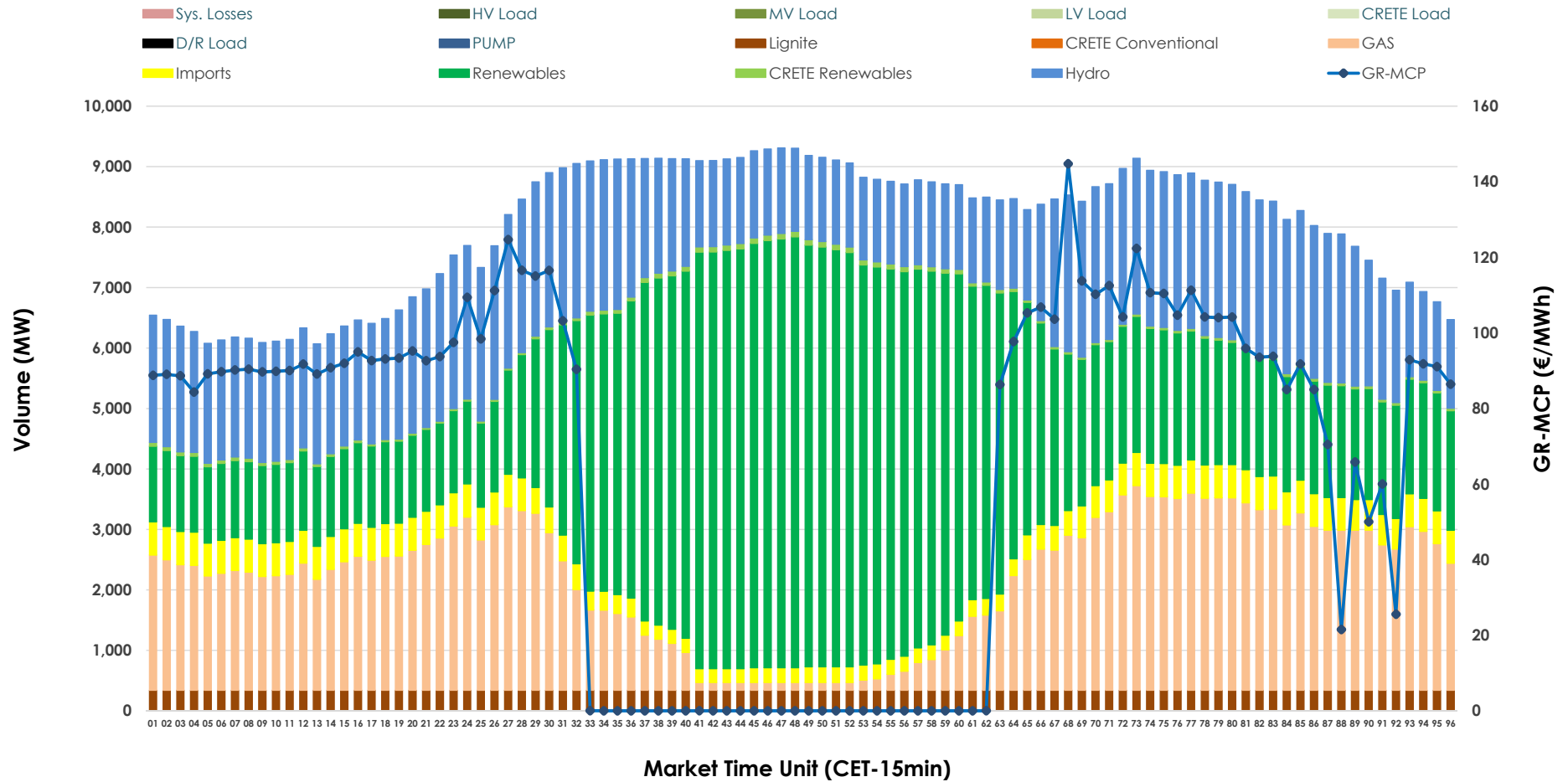


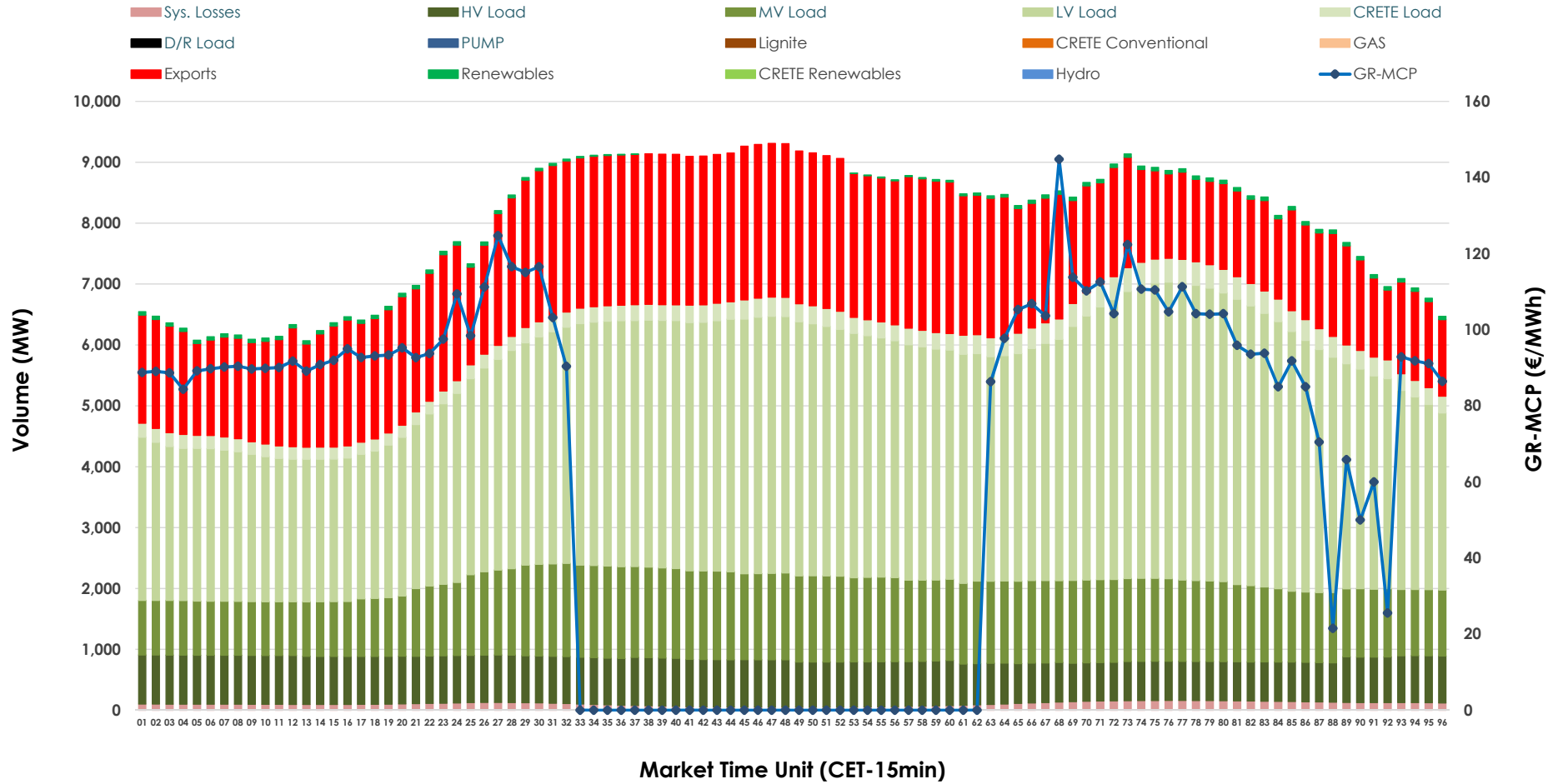


# Day-Ahead Market Outlook

24.02.2026 Day-Ahead Market - Sell



### 24.02.2026 Day-Ahead Market - Buy



### GR Bidding Zone Weekly Figures

Delivery Day	18.02	19.02	20.02	21.02	22.02	23.02	24.02
	👇 -10%	👆 39%	👉 2%	👇 -14%	👇 -29%	👇 -3%	👆 48%
<b>Avg.MCP (€/MWh)</b>	52.05	72.50	74.11	63.81	45.14	43.94	65.00
<b>Max.MCP (€/MWh)</b>	173.32	161.66	132.36	116.58	106.14	145.00	144.77
<b>Min.MCP (€/MWh)</b>	-1.01	-0.01	0.01	0.01	-0.01	-25.00	0.00
	👉 0%	👇 -3%	👉 1%	👇 -14%	👉 4%	👇 -2%	👉 10%
<b>Tot.Vol(GWh)</b>	406.30	394.81	400.54	346.45	358.95	351.59	385.95

### Trades by Order Type

Delivery Day		18.02	19.02	20.02	21.02	22.02	23.02	24.02	
<b>Ord Price Type</b>		<b>Sell &amp; Buy Trades in (GWh) per Price Type</b>							<b>(%)</b>
<b>PPT</b>	(S)	116.225	114.204	119.604	103.858	111.881	112.438	113.831	58.99%
<b>HBD</b>	(S)	66.379	62.963	64.312	52.022	55.819	43.541	58.754	30.45%
<b>BLK</b>	(S)	20.466	19.776	16.349	16.689	11.773	19.815	20.389	10.57%
<b>CPL</b>	(S)	0.078	0.464	0.003	0.657	0.000	0.000	0.000	0.00%
<b>PPT</b>	(B)	13.438	12.892	13.052	12.898	12.126	12.390	12.416	6.43%
<b>HBD</b>	(B)	151.624	151.249	150.625	136.433	132.898	126.507	145.355	75.32%
<b>BLK</b>	(B)	0.000	0.000	0.000	0.000	0.000	0.000	0.000	0.00%
<b>CPL</b>	(B)	38.086	33.266	36.591	23.895	34.448	36.898	35.202	18.24%
		<b>Sell &amp; Buy Orders Traded per Price Type</b>							<b>(%)</b>
<b>PPT</b>	(S)	2477	2482	2516	2504	2419	2534	2559	49.81%
<b>HBD</b>	(S)	2390	2604	2585	2686	2282	1926	2570	50.02%
<b>BLK</b>	(S)	11	11	7	7	6	8	9	0.18%
<b>PPT</b>	(B)	2393	2332	2324	2300	2308	2215	2216	35.04%
<b>HBD</b>	(B)	4317	4024	4076	3968	4167	4319	4109	64.96%
<b>BLK</b>	(B)	0	0	0	0	0	0	0	0.00%

**MCP** Market Clearing Price (€/MWh)  
**PPT** Priority Price-Taking  
**HBD** Hybrid  
**BLK** Block  
**CPL** Market Coupling Flow

### Trade's Volume Mix

		Sell - MWh	Buy - MWh	
<b>Lignite</b>	(4.2%)	8,160	0	(0.0%)
<b>Crete Conv.</b>	(0.0%)	0	0	(0.0%)
<b>Gas</b>	(23.4%)	45,143	0	(0.0%)
<b>Hydro</b>	(25.3%)	48,857	0	(0.0%)
<b>Imports</b>	(5.4%)	10,463		
<b>RES</b>	(40.9%)	79,016	937	(0.5%)
<b>Crete RES</b>	(0.7%)	1,334	0	(0.0%)
<b>HV Load</b>	(0.0%)	0	17,709	(9.2%)
<b>MV Load</b>	(0.0%)	0	29,924	(15.5%)
<b>LV Load</b>	(0.0%)	0	87,442	(45.3%)
<b>Crete Load</b>	(0.0%)	0	6,780	(3.5%)
<b>Pumping</b>	(0.0%)	0	0	(0.0%)
<b>Exports</b>			47,666	(24.7%)
<b>Sys.Losses</b>	(0.0%)	0	2,515	(1.3%)
<b>D/R Load</b>	(0.0%)	0	0	(0.0%)

