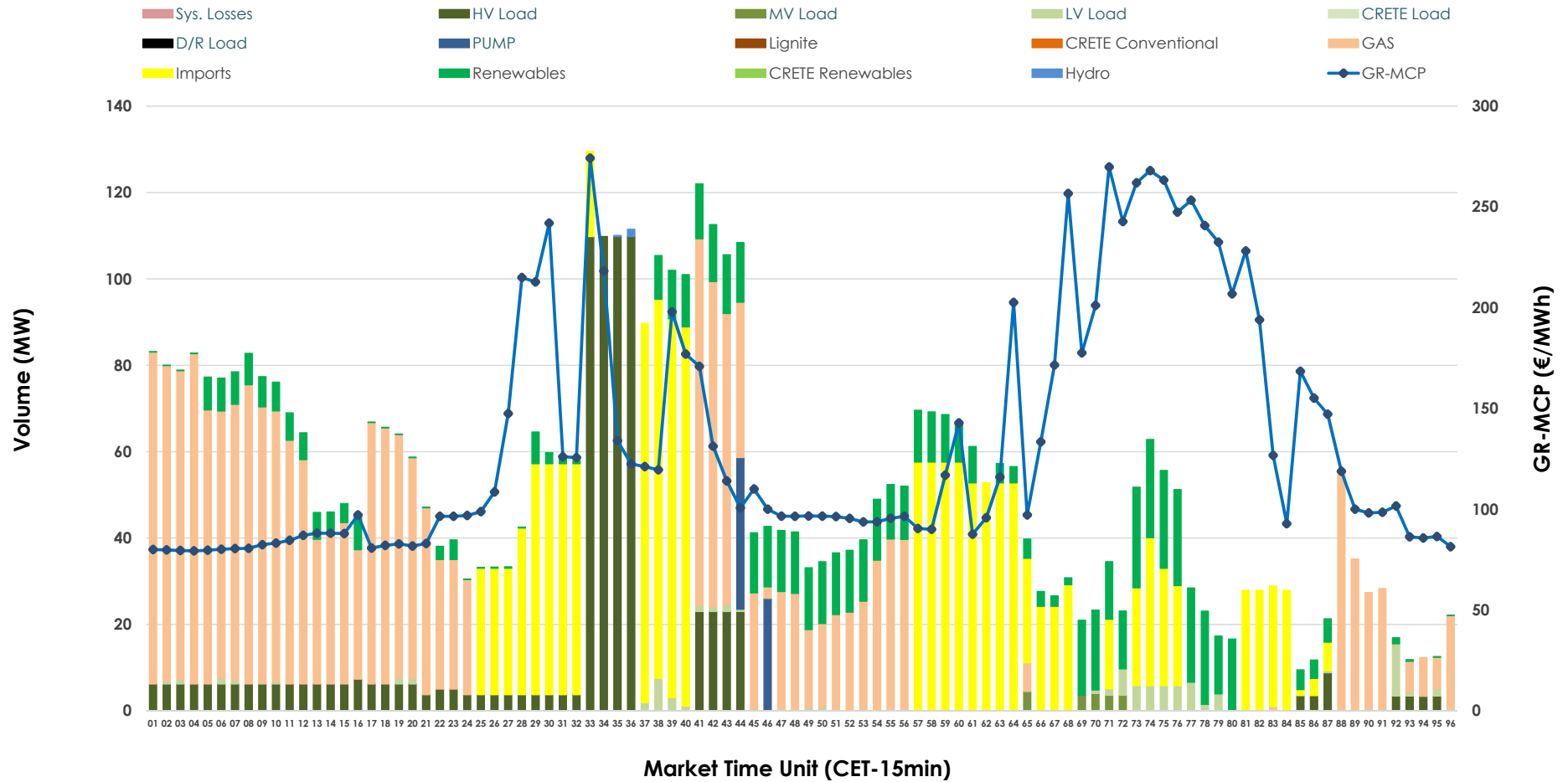


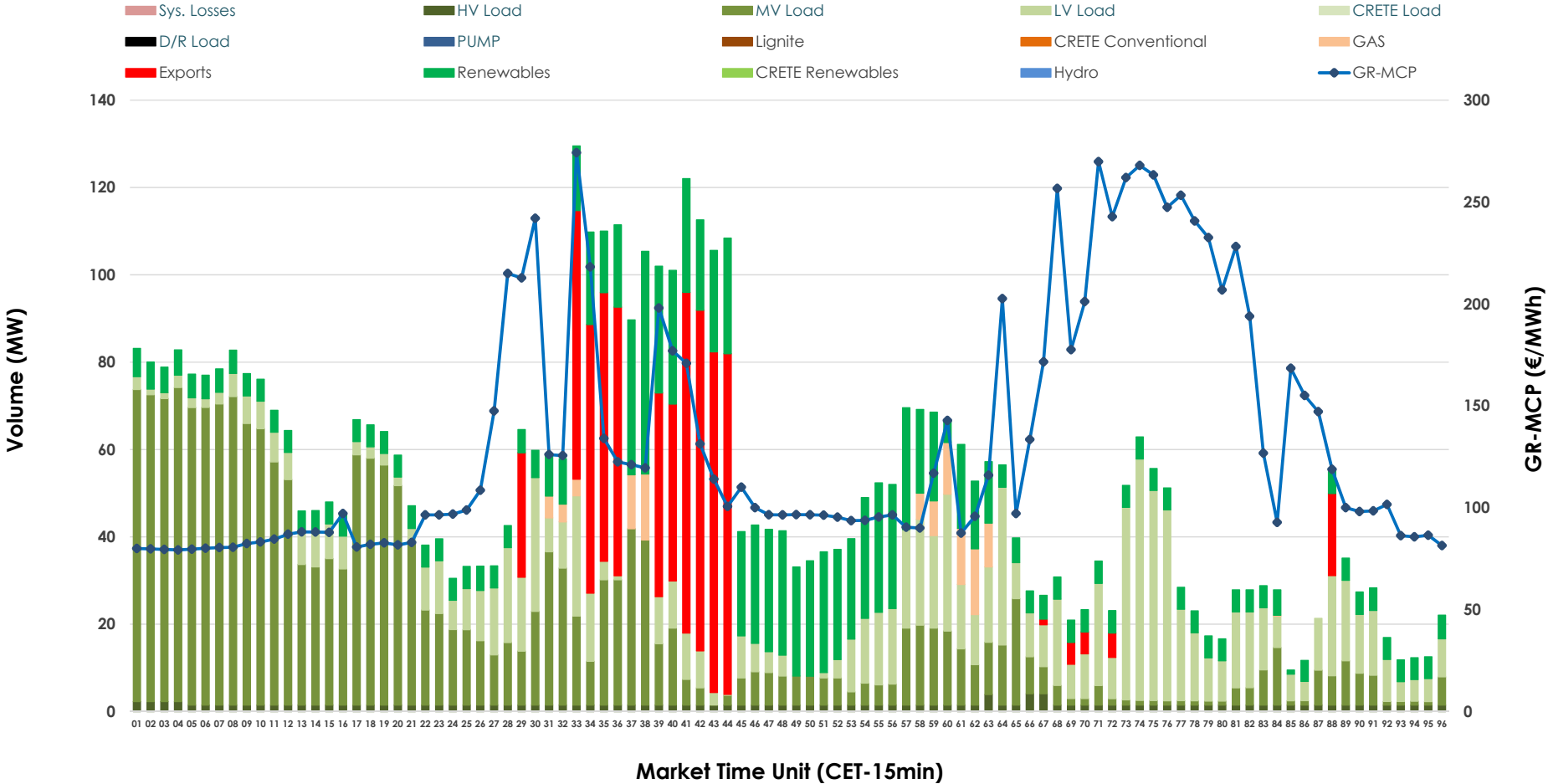


# IDA '1' Market Outlook

27.01.2026 IDA '1' Market - Sell



### 27.01.2026 IDA '1' Market - Buy



### GR Bidding Zone Weekly Figures

Delivery Day	21.01	22.01	23.01	24.01	25.01	26.01	27.01
	↑ 36%	↔ 14%	→ 0%	↓ -20%	↔ -25%	↔ 1%	↔ 31%
<b>Avg.MCP (€/MWh)</b>	145.86	166.96	167.03	133.89	100.70	102.10	133.35
<b>Max.MCP (€/MWh)</b>	238.09	328.19	340.95	173.40	146.30	197.38	274.21
<b>Min.MCP (€/MWh)</b>	105.60	116.92	95.84	94.95	0.02	77.81	79.33
	↑ 207%	↓ -40%	↑ 75%	↓ -51%	↔ -12%	↔ -10%	↔ -4%
<b>Tot.Vol(GWh)</b>	6.60	3.96	6.92	3.38	2.98	2.67	2.56

### Trades by Order Type

Delivery Day		21.01	22.01	23.01	24.01	25.01	26.01	27.01	
<b>Ord Price Type</b>		<b>Sell &amp; Buy Trades in (GWh) per Price Type</b>							<b>(%)</b>
<b>PPT</b>	(S)	0.000	0.000	0.000	0.000	0.000	0.000	0.000	0.00%
<b>HBD</b>	(S)	2.312	1.980	3.419	1.041	1.350	1.239	0.906	70.71%
<b>BLK</b>	(S)	0.000	0.000	0.000	0.000	0.000	0.000	0.000	0.00%
<b>CPL</b>	(S)	0.987	0.000	0.042	0.650	0.137	0.097	0.375	29.29%
<b>PPT</b>	(B)	0.000	0.000	0.000	0.000	0.000	0.000	0.000	0.00%
<b>HBD</b>	(B)	1.968	0.905	0.829	0.907	0.981	1.185	1.104	86.17%
<b>BLK</b>	(B)	0.000	0.000	0.000	0.000	0.000	0.000	0.000	0.00%
<b>CPL</b>	(B)	1.331	1.076	2.632	0.784	0.507	0.151	0.177	13.83%
		<b>Sell &amp; Buy Orders Traded per Price Type</b>							<b>(%)</b>
<b>PPT</b>	(S)	0	0	0	0	0	0	0	0.00%
<b>HBD</b>	(S)	202	193	327	274	66	60	161	100.00%
<b>BLK</b>	(S)	0	0	0	0	0	0	0	0.00%
<b>PPT</b>	(B)	0	0	0	0	0	0	0	0.00%
<b>HBD</b>	(B)	734	557	567	607	665	805	792	100.00%
<b>BLK</b>	(B)	0	0	0	0	0	0	0	0.00%

- MCP** Market Clearing Price (€/MWh)
- PPT** Priority Price-Taking
- HBD** Hybrid
- BLK** Block
- CPL** Market Coupling Flow

### Trade's Volume Mix

	Sell - MWh	Buy - MWh	
<b>Lignite</b> (0.0%)	0	0	(0.0%)
<b>Crete Conv.</b> (0.0%)	0	0	(0.0%)
<b>Gas</b> (40.0%)	513	26	(2.0%)
<b>Hydro</b> (0.0%)	0	0	(0.0%)
<b>Imports</b> (29.3%)	375		
<b>RES</b> (13.1%)	168	272	(21.2%)
<b>Crete RES</b> (0.0%)	0	0	(0.0%)
<b>HV Load</b> (14.3%)	183	39	(3.0%)
<b>MV Load</b> (0.4%)	5	484	(37.8%)
<b>LV Load</b> (1.7%)	22	283	(22.1%)
<b>Crete Load</b> (0.0%)	0	0	(0.0%)
<b>Pumping</b> (1.2%)	15	0	(0.0%)
<b>Exports</b>		177	(13.8%)
<b>Sys.Losses</b> (0.0%)	0	0	(0.0%)
<b>D/R Load</b> (0.0%)	0	0	(0.0%)

