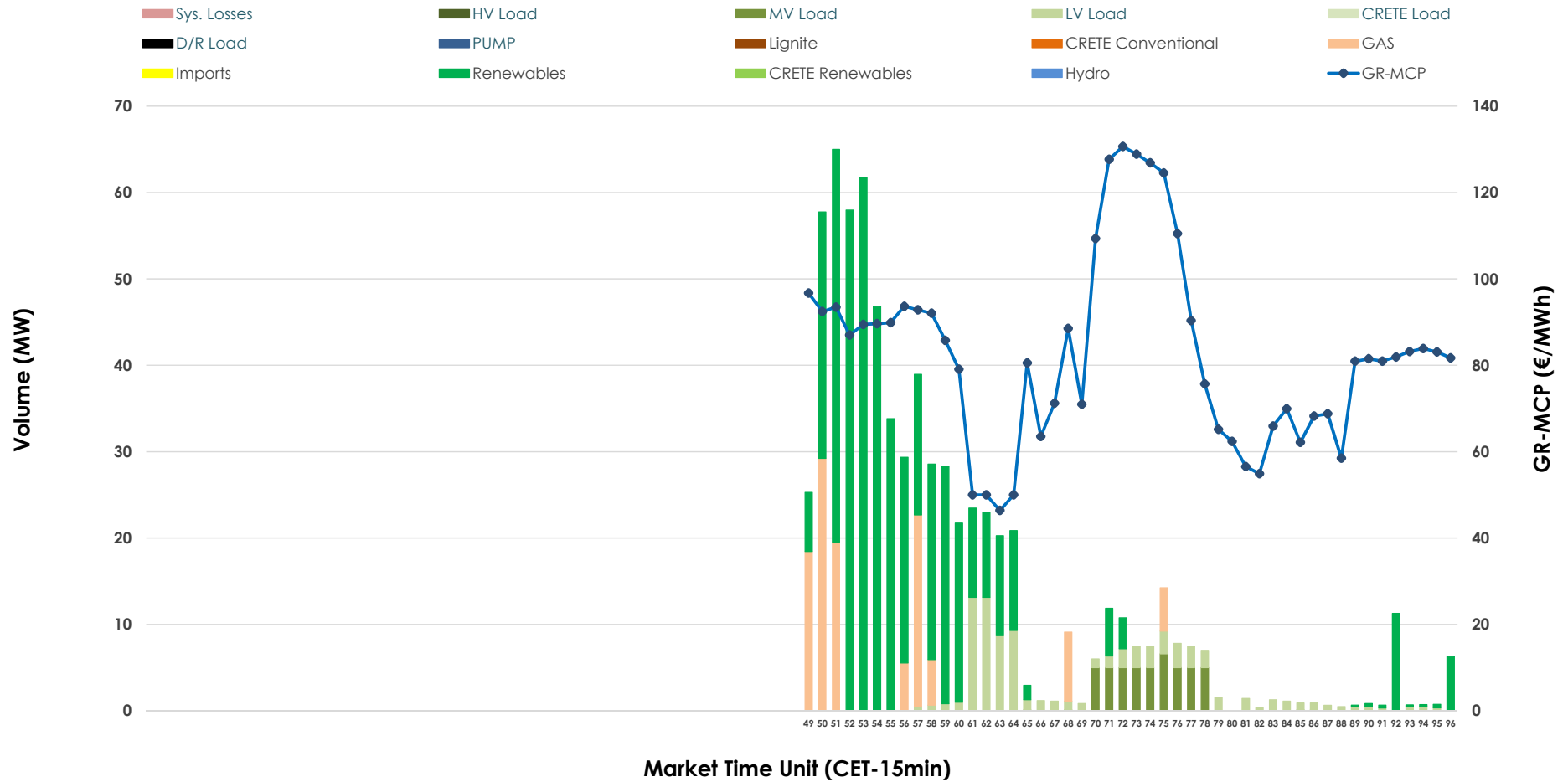


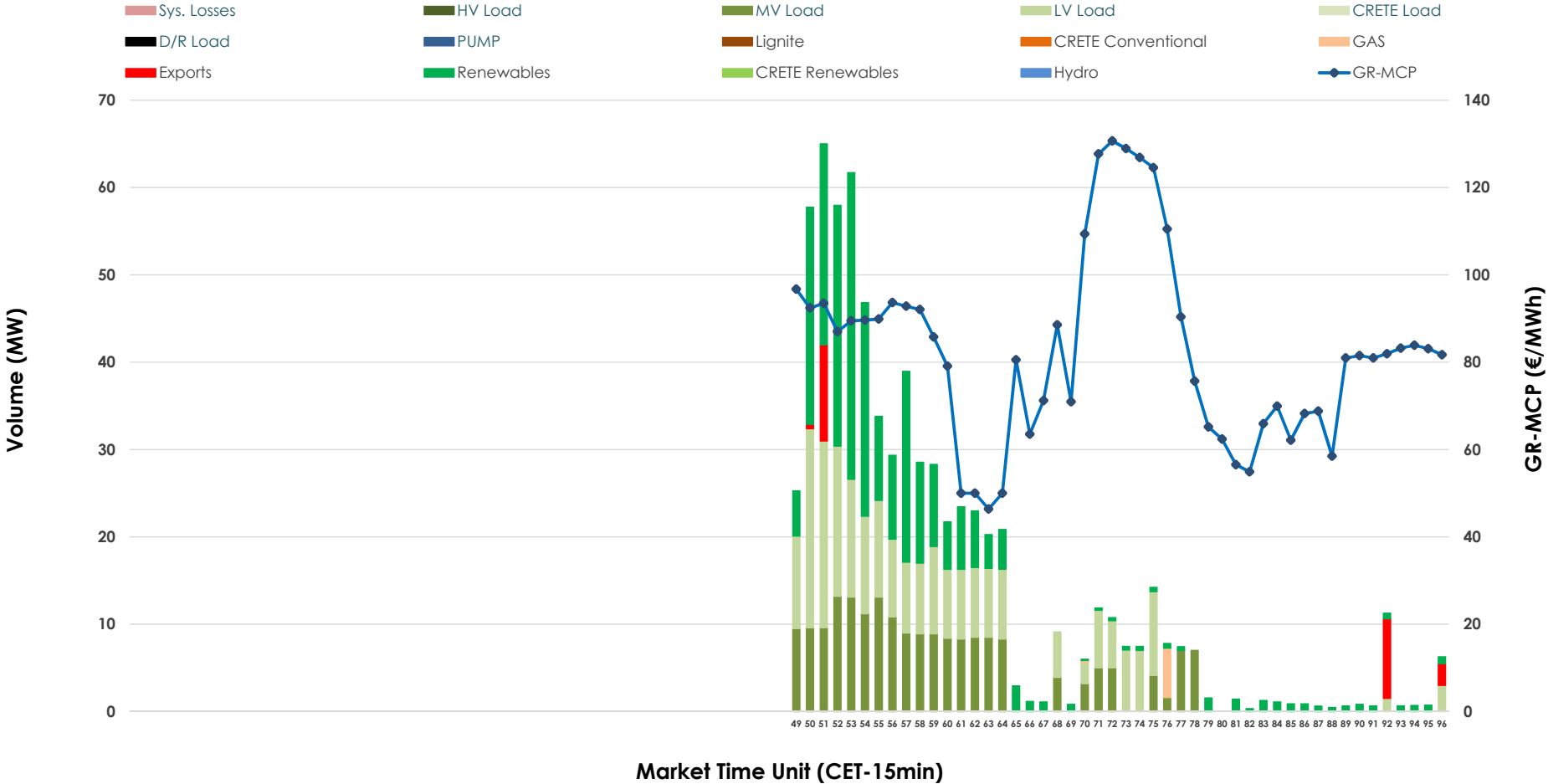


# IDA '3' Market Outlook

06.02.2026 IDA '3' Market - Sell



### 06.02.2026 IDA '3' Market - Buy



### GR Bidding Zone Weekly Figures

Delivery Day	31.01	01.02	02.02	03.02	04.02	05.02	06.02
	👇 -28%	👆 27%	👆 35%	👇 -3%	👇 -40%	👆 36%	👇 -23%
<b>Avg.MCP (€/MWh)</b>	77.37	98.38	132.44	129.08	77.94	106.18	81.36
<b>Max.MCP (€/MWh)</b>	147.22	126.94	245.66	222.90	133.33	158.92	130.67
<b>Min.MCP (€/MWh)</b>	-3.42	80.03	61.08	67.86	0.10	67.30	0.00
	👇 -21%	👆 248%	👇 -43%	👆 32%	👇 -65%	👆 297%	👇 -88%
<b>Tot.Vol(GWh)</b>	0.79	2.75	1.58	2.09	0.73	2.92	0.35

### Trades by Order Type

Delivery Day		31.01	01.02	02.02	03.02	04.02	05.02	06.02	
<b>Ord Price Type</b>		<b>Sell &amp; Buy Trades in (GWh) per Price Type</b>							<b>(%)</b>
<b>PPT</b>	(S)	0.000	0.000	0.000	0.000	0.000	0.000	0.000	0.00%
<b>HBD</b>	(S)	0.391	1.376	0.786	1.018	0.367	0.935	0.177	100.00%
<b>BLK</b>	(S)	0.000	0.000	0.000	0.000	0.000	0.000	0.000	0.00%
<b>CPL</b>	(S)	0.004	0.000	0.004	0.028	0.000	0.523	0.000	0.00%
<b>PPT</b>	(B)	0.000	0.000	0.000	0.000	0.000	0.000	0.000	0.00%
<b>HBD</b>	(B)	0.246	0.679	0.301	0.432	0.319	1.454	0.171	96.74%
<b>BLK</b>	(B)	0.000	0.000	0.000	0.000	0.000	0.000	0.000	0.00%
<b>CPL</b>	(B)	0.149	0.698	0.490	0.613	0.048	0.004	0.006	3.26%
		<b>Sell &amp; Buy Orders Traded per Price Type</b>							<b>(%)</b>
<b>PPT</b>	(S)	0	0	0	0	0	0	0	0.00%
<b>HBD</b>	(S)	100	185	209	262	140	268	90	100.00%
<b>BLK</b>	(S)	0	0	0	0	0	0	0	0.00%
<b>PPT</b>	(B)	0	0	0	0	0	0	0	0.00%
<b>HBD</b>	(B)	131	269	120	112	213	153	120	100.00%
<b>BLK</b>	(B)	0	0	0	0	0	0	0	0.00%

**MCP** Market Clearing Price (€/MWh)  
**PPT** Priority Price-Taking  
**HBD** Hybrid  
**BLK** Block  
**CPL** Market Coupling Flow

### Trade's Volume Mix

		Sell - MWh		Buy - MWh	
<b>Lignite</b>	(0.0%)	0	0	0	(0.0%)
<b>Crete Conv.</b>	(0.0%)	0	0	0	(0.0%)
<b>Gas</b>	(16.0%)	28	1	0	(0.8%)
<b>Hydro</b>	(0.0%)	0	0	0	(0.0%)
<b>Imports</b>	(0.0%)	0	0	0	(0.0%)
<b>RES</b>	(65.7%)	116	63	0	(35.7%)
<b>Crete RES</b>	(0.0%)	0	0	0	(0.0%)
<b>HV Load</b>	(0.0%)	0	0	0	(0.0%)
<b>MV Load</b>	(6.6%)	12	49	0	(27.6%)
<b>LV Load</b>	(11.7%)	21	58	0	(32.5%)
<b>Crete Load</b>	(0.0%)	0	0	0	(0.0%)
<b>Pumping</b>	(0.0%)	0	0	0	(0.0%)
<b>Exports</b>		0	6	0	(3.3%)
<b>Sys.Losses</b>	(0.0%)	0	0	0	(0.0%)
<b>D/R Load</b>	(0.0%)	0	0	0	(0.0%)

