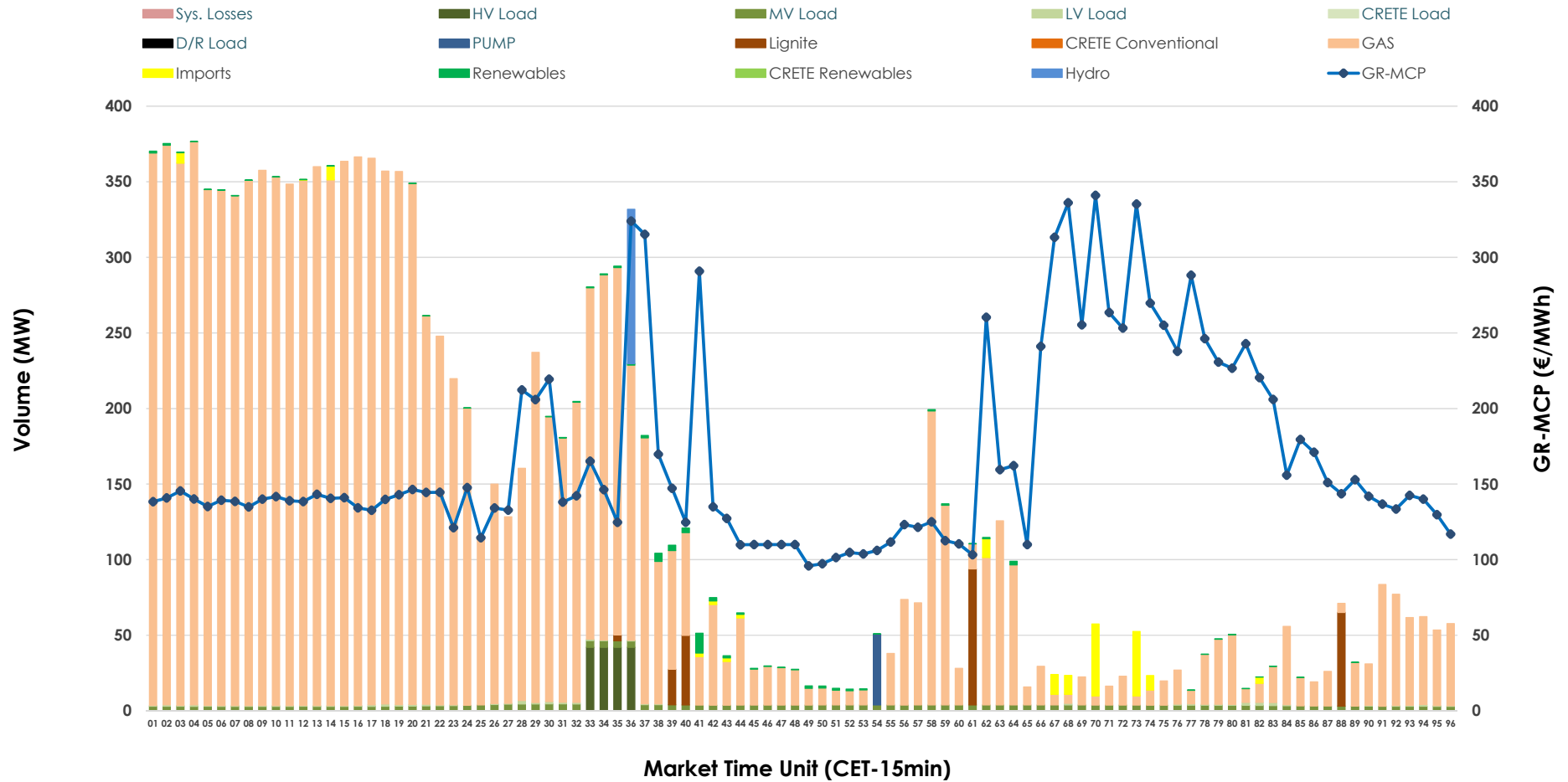


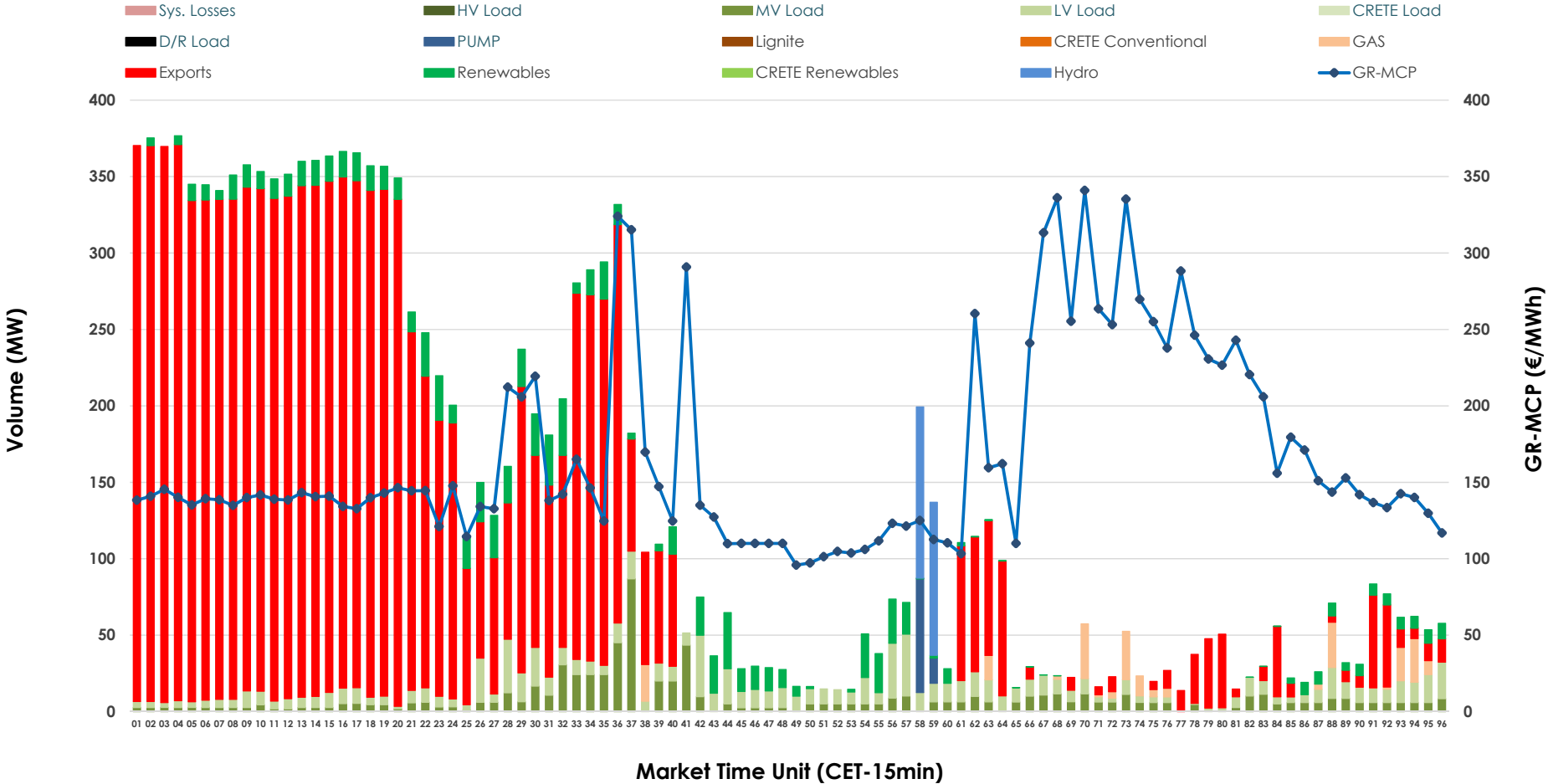


IDA '1' Market Outlook

23.01.2026 IDA '1' Market - Sell



23.01.2026 IDA '1' Market - Buy



GR Bidding Zone Weekly Figures

Delivery Day	17.01	18.01	19.01	20.01	21.01	22.01	23.01
	↘ -23%	→ 0%	↗ 9%	↗ 2%	↗ 36%	↗ 14%	→ 0%
Avg.MCP (€/MWh)	96.45	96.20	105.19	107.17	145.86	166.96	167.03
Max.MCP (€/MWh)	145.50	155.91	174.33	198.60	238.09	328.19	340.95
Min.MCP (€/MWh)	71.05	74.86	80.65	65.42	105.60	116.92	95.84
	↘ -44%	↘ -17%	↗ 36%	↘ -7%	↗ 207%	↘ -40%	↗ 75%
Tot.Vol(GWh)	2.04	1.70	2.31	2.15	6.60	3.96	6.92

Trades by Order Type

Delivery Day		17.01	18.01	19.01	20.01	21.01	22.01	23.01	
Ord Price Type		Sell & Buy Trades in (GWh) per Price Type							(%)
PPT	(S)	0.000	0.000	0.000	0.000	0.000	0.000	0.000	0.00%
HBD	(S)	1.019	0.773	0.948	1.030	2.312	1.980	3.419	98.79%
BLK	(S)	0.000	0.000	0.000	0.000	0.000	0.000	0.000	0.00%
CPL	(S)	0.002	0.079	0.208	0.045	0.987	0.000	0.042	1.21%
PPT	(B)	0.000	0.000	0.000	0.000	0.000	0.000	0.000	0.00%
HBD	(B)	0.882	0.801	1.134	0.935	1.968	0.905	0.829	23.96%
BLK	(B)	0.000	0.000	0.000	0.000	0.000	0.000	0.000	0.00%
CPL	(B)	0.140	0.051	0.022	0.140	1.331	1.076	2.632	76.04%
		Sell & Buy Orders Traded per Price Type							(%)
PPT	(S)	0	0	0	0	0	0	0	0.00%
HBD	(S)	167	94	186	227	202	193	327	100.00%
BLK	(S)	0	0	0	0	0	0	0	0.00%
PPT	(B)	0	0	0	0	0	0	0	0.00%
HBD	(B)	772	537	548	681	734	557	567	100.00%
BLK	(B)	0	0	0	0	0	0	0	0.00%

- MCP** Market Clearing Price (€/MWh)
- PPT** Priority Price-Taking
- HBD** Hybrid
- BLK** Block
- CPL** Market Coupling Flow

Trade's Volume Mix

		Sell - MWh		Buy - MWh	
Lignite	(1.6%)	56	0	0	(0.0%)
Crete Conv.	(0.0%)	0	0	0	(0.0%)
Gas	(91.7%)	3,174	58	0	(1.7%)
Hydro	(0.7%)	26	53	0	(1.5%)
Imports	(1.2%)	42	0	0	(0.0%)
RES	(0.4%)	13	246	0	(7.1%)
Crete RES	(0.0%)	0	0	0	(0.0%)
HV Load	(1.2%)	42	0	0	(0.0%)
MV Load	(2.5%)	87	195	0	(5.6%)
LV Load	(0.3%)	11	255	0	(7.4%)
Crete Load	(0.0%)	0	0	0	(0.0%)
Pumping	(0.3%)	12	23	0	(0.7%)
Exports		0	2,632	0	(76.0%)
Sys.Losses	(0.0%)	0	0	0	(0.0%)
D/R Load	(0.0%)	0	0	0	(0.0%)

