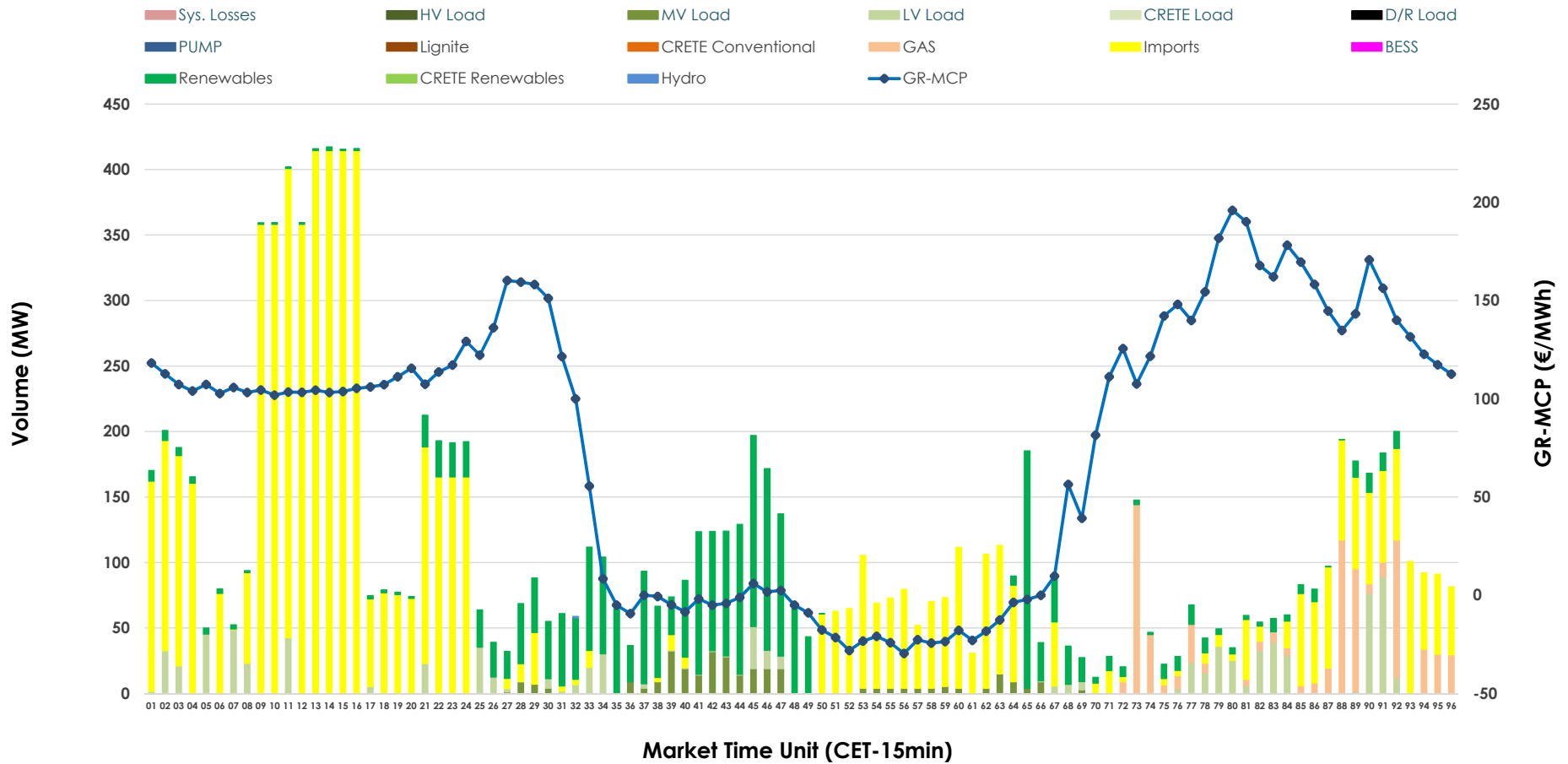


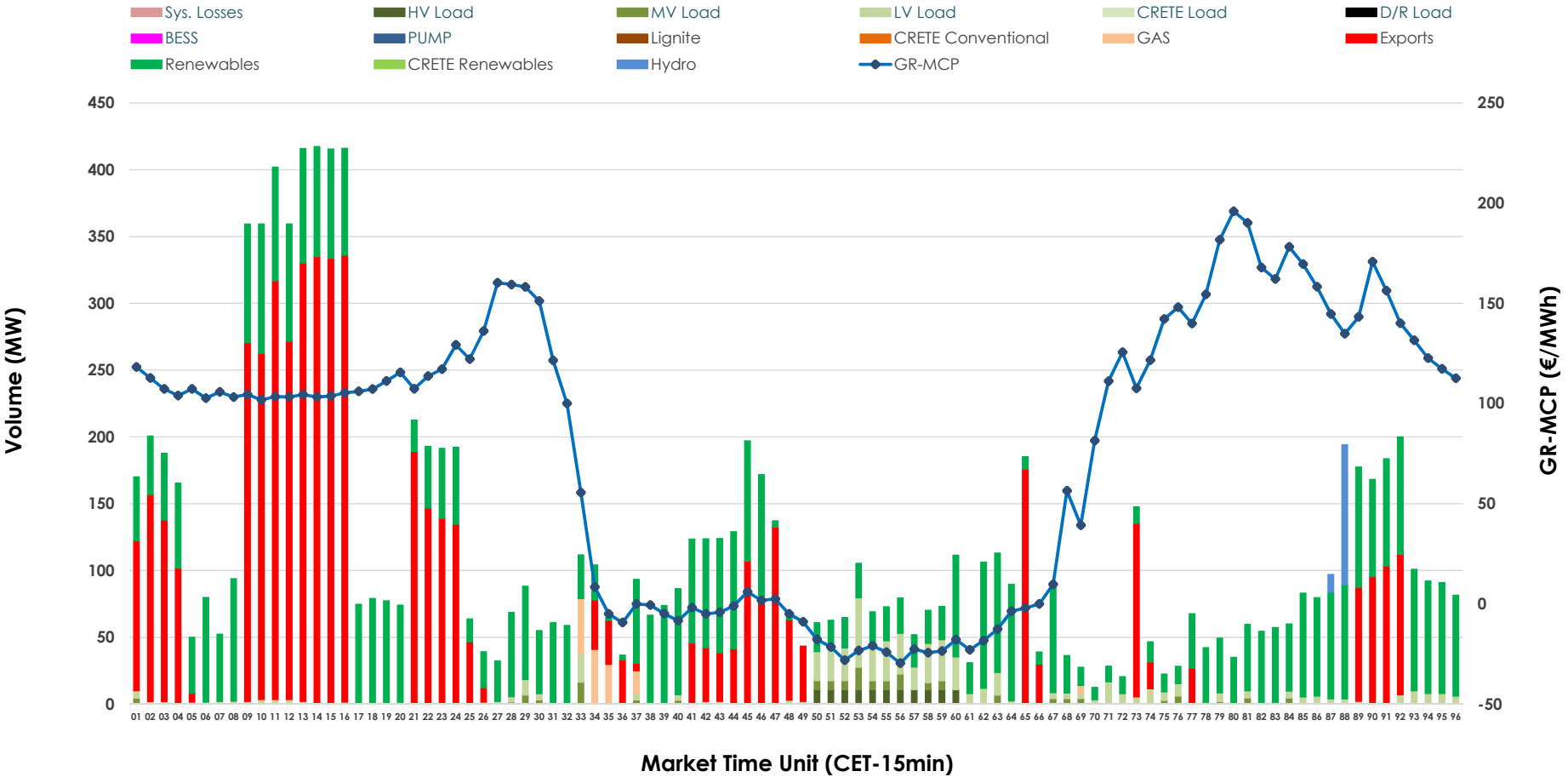


IDA '2' Market Outlook

08.04.2026 IDA '2' Market - Sell



08.04.2026 IDA '2' Market - Buy



GR Bidding Zone Weekly Figures

Delivery Day	02.04	03.04	04.04	05.04	06.04	07.04	08.04
	👉 -11%	👉 -4%	👇 -52%	👇 -69%	👈 162%	👈 55%	👉 -2%
Avg.MCP (€/MWh)	134.81	129.15	62.39	19.53	51.16	79.13	77.38
Max.MCP (€/MWh)	207.31	218.30	150.46	113.90	198.89	199.05	195.91
Min.MCP (€/MWh)	94.56	36.29	-2.10	-50.56	-48.10	-24.00	-29.60
	👈 12%	👉 -23%	👇 -45%	👈 36%	👈 27%	👉 -28%	👈 17%
Tot.Vol(GWh)	9.11	7.02	3.87	5.28	6.68	4.81	5.64

Trades by Order Type

Delivery Day	02.04	03.04	04.04	05.04	06.04	07.04	08.04	
Ord Price Type	Sell & Buy Trades in (GWh) per Price Type							(%)
PPT (S)	0.000	0.000	0.000	0.000	0.000	0.000	0.000	0.00%
HBD (S)	1.846	1.233	1.081	1.962	1.218	0.714	1.055	37.43%
BLK (S)	0.000	0.000	0.000	0.000	0.000	0.000	0.000	0.00%
CPL (S)	2.711	2.278	0.854	0.676	2.124	1.693	1.764	62.57%
PPT (B)	0.000	0.000	0.000	0.000	0.000	0.000	0.000	0.00%
HBD (B)	1.944	1.159	0.856	2.313	2.837	1.898	1.549	54.94%
BLK (B)	0.000	0.000	0.000	0.000	0.000	0.000	0.000	0.00%
CPL (B)	2.613	2.352	1.079	0.324	0.505	0.509	1.270	45.06%
	Sell & Buy Orders Traded per Price Type							(%)
PPT (S)	0	0	0	0	0	0	0	0.00%
HBD (S)	398	389	241	399	262	196	262	100.00%
BLK (S)	0	0	0	0	0	0	0	0.00%
PPT (B)	0	0	0	0	0	0	0	0.00%
HBD (B)	409	404	405	430	634	632	353	100.00%
BLK (B)	0	0	0	0	0	0	0	0.00%

MCP Market Clearing Price (€/MWh)
PPT Priority Price-Taking
HBD Hybrid
BLK Block
CPL Market Coupling Flow

Trade's Volume Mix

	Sell - MWh	Buy - MWh	
Lignite (0.0%)	0	0	(0.0%)
Crete Conv. (0.0%)	0	0	(0.0%)
Gas (6.5%)	184	34	(1.2%)
Hydro (0.0%)	0	29	(1.0%)
Imports (62.6%)	1,764		
RES (20.7%)	583	1,267	(45.0%)
Crete RES (0.0%)	0	0	(0.0%)
BESS (0.0%)	0	0	(0.0%)
HV Load (0.0%)	0	30	(1.1%)
MV Load (2.8%)	79	38	(1.3%)
LV Load (7.4%)	209	151	(5.3%)
Crete Load (0.0%)	0	0	(0.0%)
Pumping (0.0%)	0	0	(0.0%)
Exports		1,270	(45.1%)
Sys.Losses (0.0%)	0	0	(0.0%)
D/R Load (0.0%)	0	0	(0.0%)

