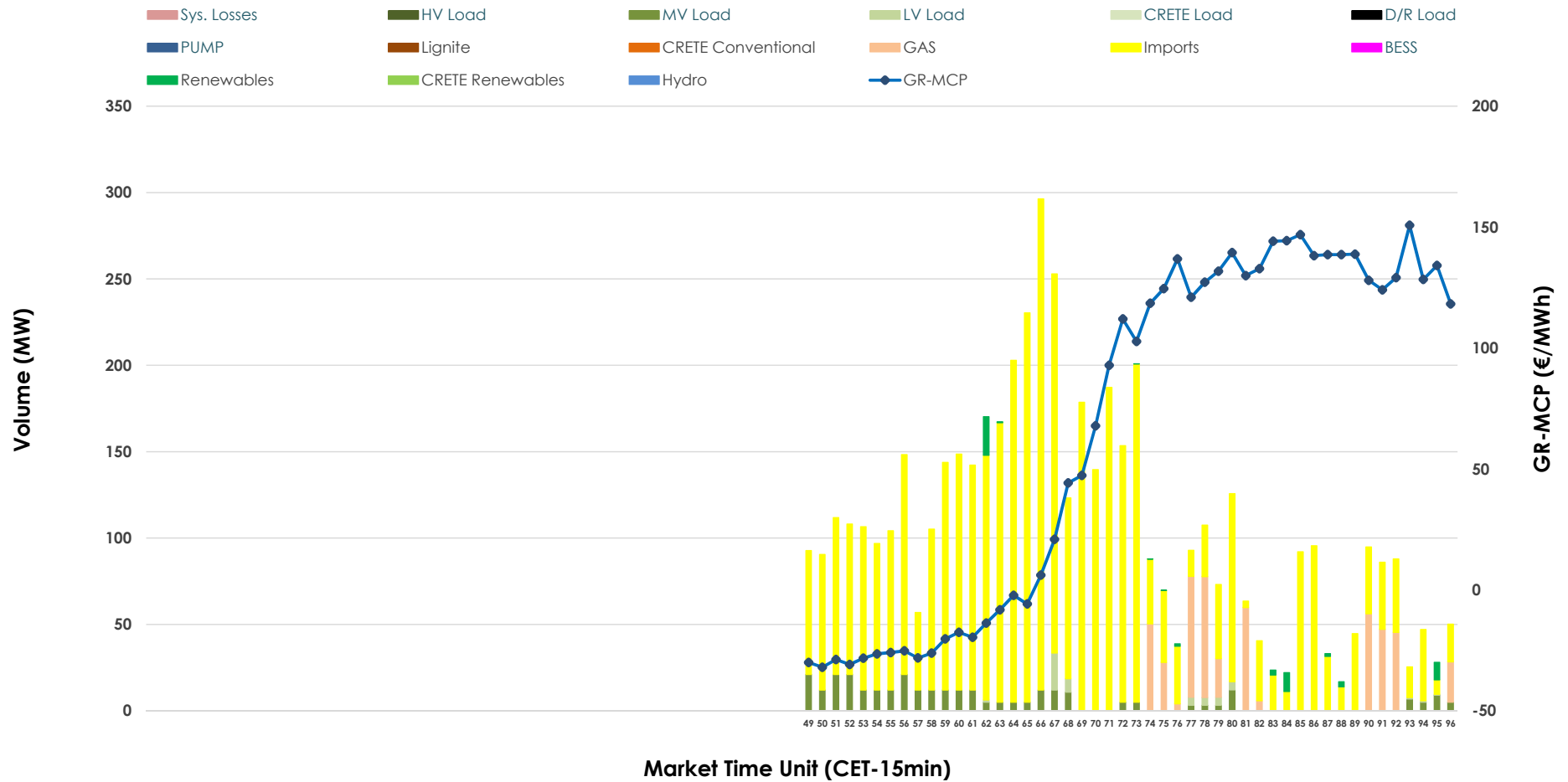


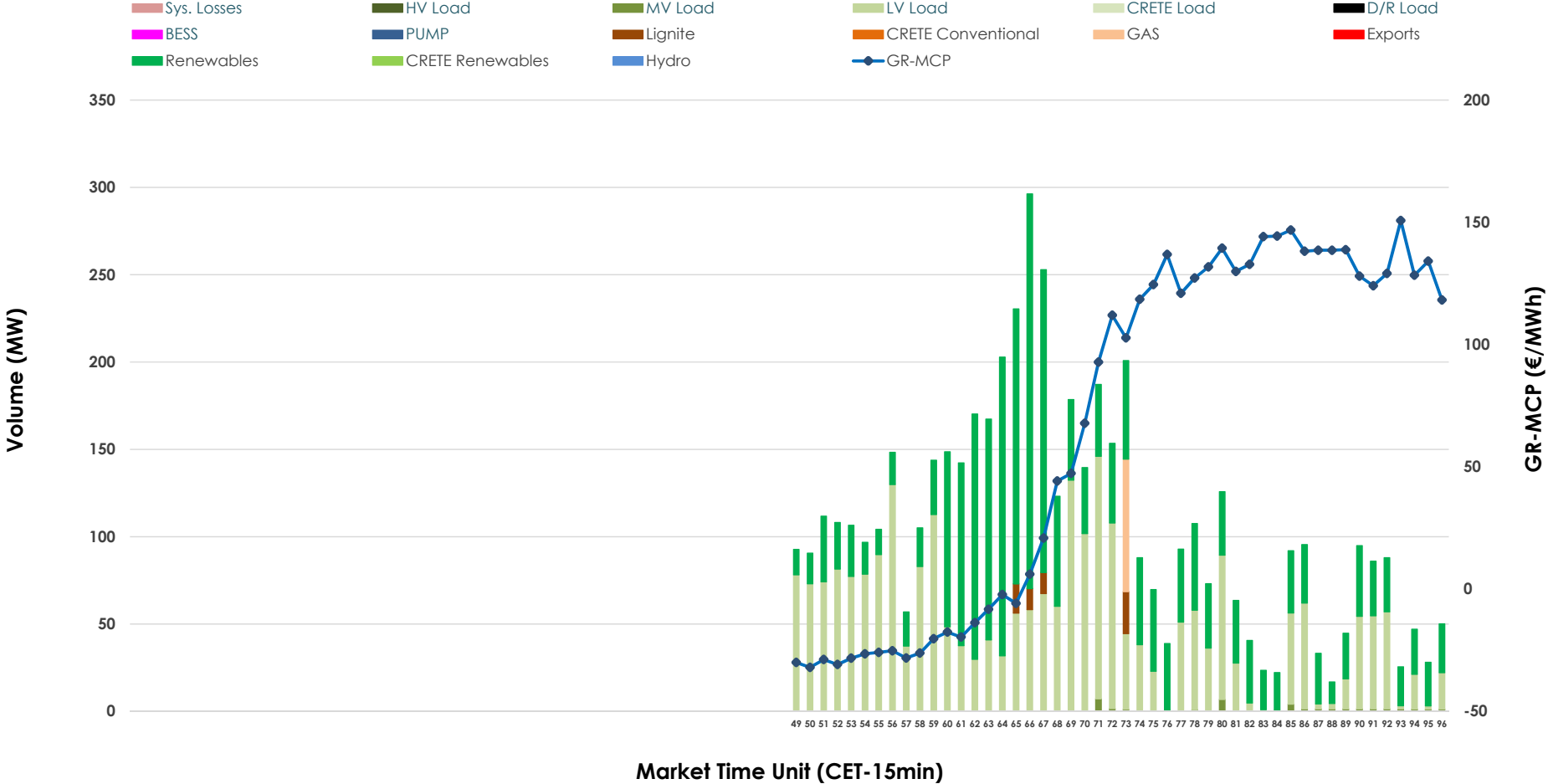


IDA '3' Market Outlook

06.06.2026 IDA '3' Market - Sell



06.06.2026 IDA '3' Market - Buy



GR Bidding Zone Weekly Figures

Delivery Day	31.05	01.06	02.06	03.06	04.06	05.06	06.06
	↗ 32%	↗ 16%	↘ -14%	↘ -12%	↗ 17%	↗ 20%	↘ -44%
Avg.MCP (€/MWh)	97.75	113.15	96.79	84.90	99.36	119.09	66.44
Max.MCP (€/MWh)	171.99	245.99	171.85	151.86	203.24	180.60	150.74
Min.MCP (€/MWh)	19.99	15.00	1.83	7.31	3.05	48.90	-32.00
	↗ 146%	↘ -36%	↘ -32%	↗ 21%	↘ -16%	↘ -32%	↗ 97%
Tot.Vol(GWh)	4.47	2.86	1.93	2.33	1.95	1.32	2.60

Trades by Order Type

Delivery Day		31.05	01.06	02.06	03.06	04.06	05.06	06.06	
Ord Price Type		Sell & Buy Trades in (GWh) per Price Type							(%)
PPT	(S)	0.000	0.000	0.000	0.000	0.000	0.000	0.000	0.00%
HBD	(S)	0.705	1.017	0.682	0.916	0.423	0.378	0.223	17.11%
BLK	(S)	0.000	0.000	0.000	0.000	0.000	0.000	0.000	0.00%
CPL	(S)	1.532	0.412	0.284	0.251	0.552	0.282	1.079	82.89%
PPT	(B)	0.000	0.000	0.000	0.000	0.000	0.000	0.000	0.00%
HBD	(B)	1.909	0.942	0.786	0.667	0.905	0.504	1.301	100.00%
BLK	(B)	0.000	0.000	0.000	0.000	0.000	0.000	0.000	0.00%
CPL	(B)	0.328	0.488	0.180	0.500	0.069	0.156	0.000	0.00%
		Sell & Buy Orders Traded per Price Type							(%)
PPT	(S)	0	0	0	0	0	0	0	0.00%
HBD	(S)	177	168	189	244	146	238	58	100.00%
BLK	(S)	0	0	0	0	0	0	0	0.00%
PPT	(B)	0	0	0	0	0	0	0	0.00%
HBD	(B)	164	184	277	260	273	216	273	100.00%
BLK	(B)	0	0	0	0	0	0	0	0.00%

- MCP** Market Clearing Price (€/MWh)
- PPT** Priority Price-Taking
- HBD** Hybrid
- BLK** Block
- CPL** Market Coupling Flow

Trade's Volume Mix

		Sell - MWh	Buy - MWh	
Lignite	(0.0%)	0	16	(1.2%)
Crete Conv.	(0.0%)	0	0	(0.0%)
Gas	(9.3%)	121	19	(1.5%)
Hydro	(0.0%)	0	0	(0.0%)
Imports	(82.9%)	1,079		
RES	(1.0%)	13	623	(47.9%)
Crete RES	(0.0%)	0	0	(0.0%)
BESS	(0.0%)	0	0	(0.0%)
HV Load	(0.0%)	0	0	(0.0%)
MV Load	(5.8%)	76	9	(0.7%)
LV Load	(1.0%)	13	634	(48.7%)
Crete Load	(0.0%)	0	0	(0.0%)
Pumping	(0.0%)	0	0	(0.0%)
Exports			0	(0.0%)
Sys.Losses	(0.0%)	0	0	(0.0%)
D/R Load	(0.0%)	0	0	(0.0%)

