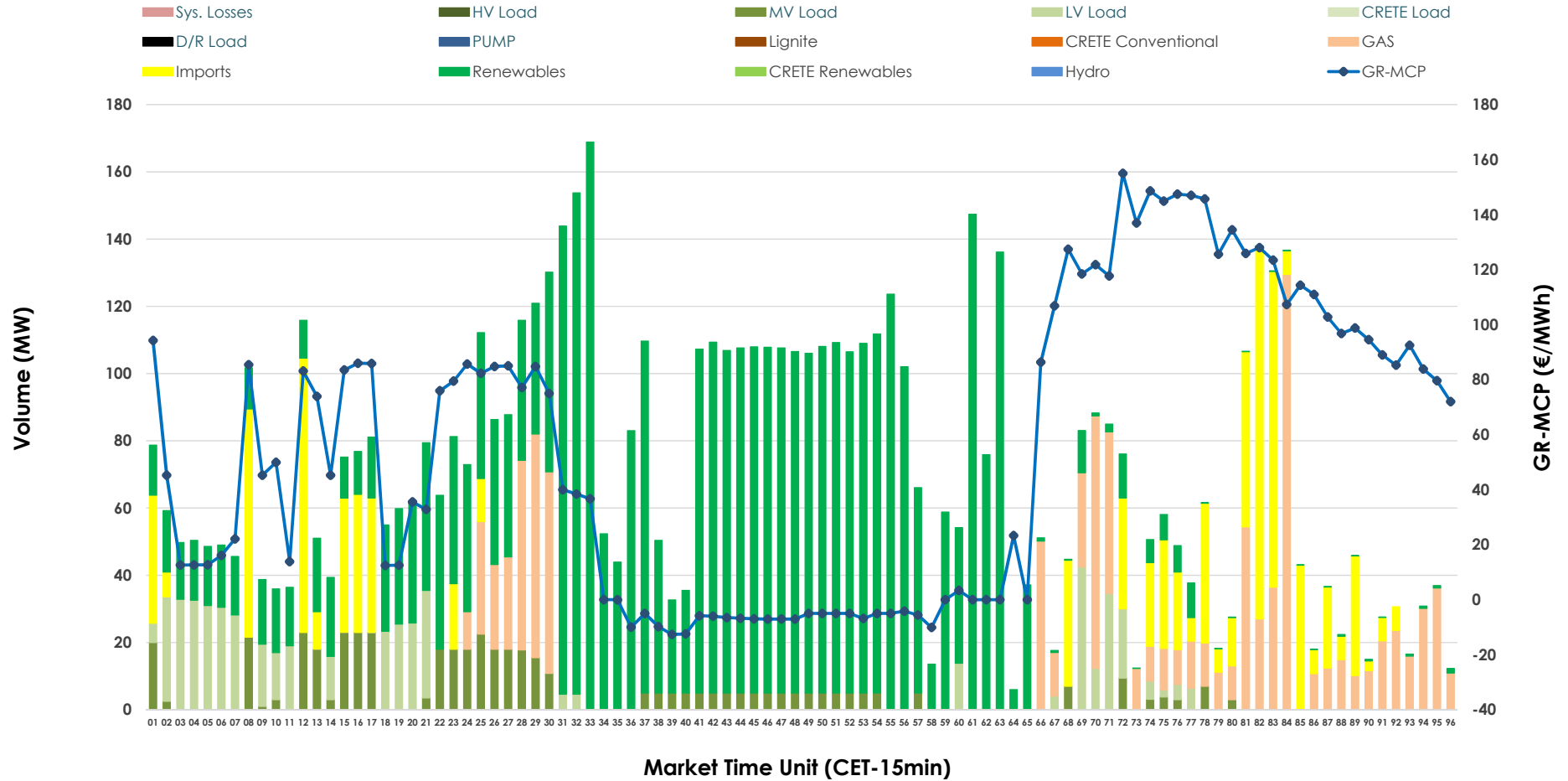


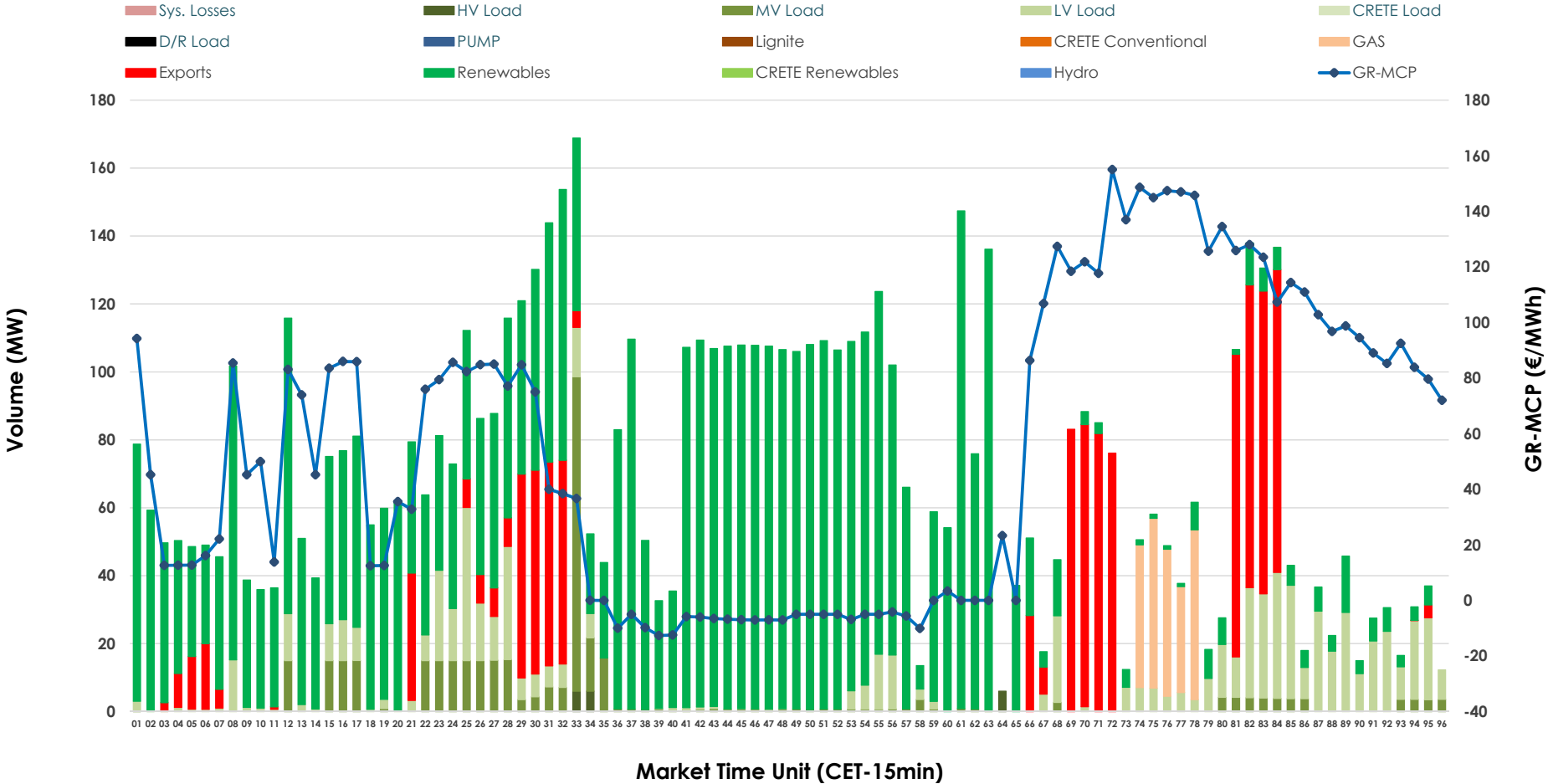


IDA '2' Market Outlook

25.02.2026 IDA '2' Market - Sell



25.02.2026 IDA '2' Market - Buy



GR Bidding Zone Weekly Figures

Delivery Day	19.02	20.02	21.02	22.02	23.02	24.02	25.02
	↗ 24%	↗ 4%	↘ -15%	↘ -39%	↗ 54%	↗ 18%	↘ -15%
Avg.MCP (€/MWh)	66.00	68.42	58.00	35.43	54.51	64.22	54.61
Max.MCP (€/MWh)	170.80	138.20	106.11	105.42	141.61	140.04	155.01
Min.MCP (€/MWh)	-25.07	-18.00	-8.01	-15.00	-25.00	-12.33	-12.63
	↘ -51%	↗ 45%	↘ -35%	↗ 44%	↗ 33%	↘ -27%	↘ -8%
Tot.Vol(GWh)	2.86	4.16	2.70	3.90	5.19	3.77	3.49

Trades by Order Type

Delivery Day		19.02	20.02	21.02	22.02	23.02	24.02	25.02	
Ord Price Type		Sell & Buy Trades in (GWh) per Price Type							(%)
PPT	(S)	0.000	0.000	0.000	0.000	0.000	0.000	0.000	0.00%
HBD	(S)	1.182	1.864	0.992	1.726	1.631	1.491	1.499	85.98%
BLK	(S)	0.000	0.000	0.000	0.000	0.000	0.000	0.000	0.00%
CPL	(S)	0.250	0.218	0.361	0.222	0.967	0.394	0.244	14.02%
PPT	(B)	0.000	0.000	0.000	0.000	0.000	0.000	0.000	0.00%
HBD	(B)	0.948	1.819	1.322	1.654	2.441	1.390	1.471	84.37%
BLK	(B)	0.000	0.000	0.000	0.000	0.000	0.000	0.000	0.00%
CPL	(B)	0.483	0.263	0.031	0.294	0.157	0.496	0.273	15.63%
		Sell & Buy Orders Traded per Price Type							(%)
PPT	(S)	0	0	0	0	0	0	0	0.00%
HBD	(S)	172	327	276	137	271	234	268	100.00%
BLK	(S)	0	0	0	0	0	0	0	0.00%
PPT	(B)	0	0	0	0	0	0	0	0.00%
HBD	(B)	370	525	525	528	382	368	415	100.00%
BLK	(B)	0	0	0	0	0	0	0	0.00%

- MCP** Market Clearing Price (€/MWh)
- PPT** Priority Price-Taking
- HBD** Hybrid
- BLK** Block
- CPL** Market Coupling Flow

Trade's Volume Mix

		Sell - MWh	Buy - MWh	
Lignite	(0.0%)	0	0	(0.0%)
Crete Conv.	(0.0%)	0	0	(0.0%)
Gas	(14.8%)	258	54	(3.1%)
Hydro	(0.0%)	0	0	(0.0%)
Imports	(14.0%)	244		
RES	(57.2%)	998	1,121	(64.3%)
Crete RES	(0.0%)	0	0	(0.0%)
HV Load	(0.0%)	0	5	(0.3%)
MV Load	(6.5%)	113	95	(5.4%)
LV Load	(7.4%)	130	196	(11.3%)
Crete Load	(0.0%)	0	0	(0.0%)
Pumping	(0.0%)	0	0	(0.0%)
Exports			273	(15.6%)
Sys.Losses	(0.0%)	0	0	(0.0%)
D/R Load	(0.0%)	0	0	(0.0%)

