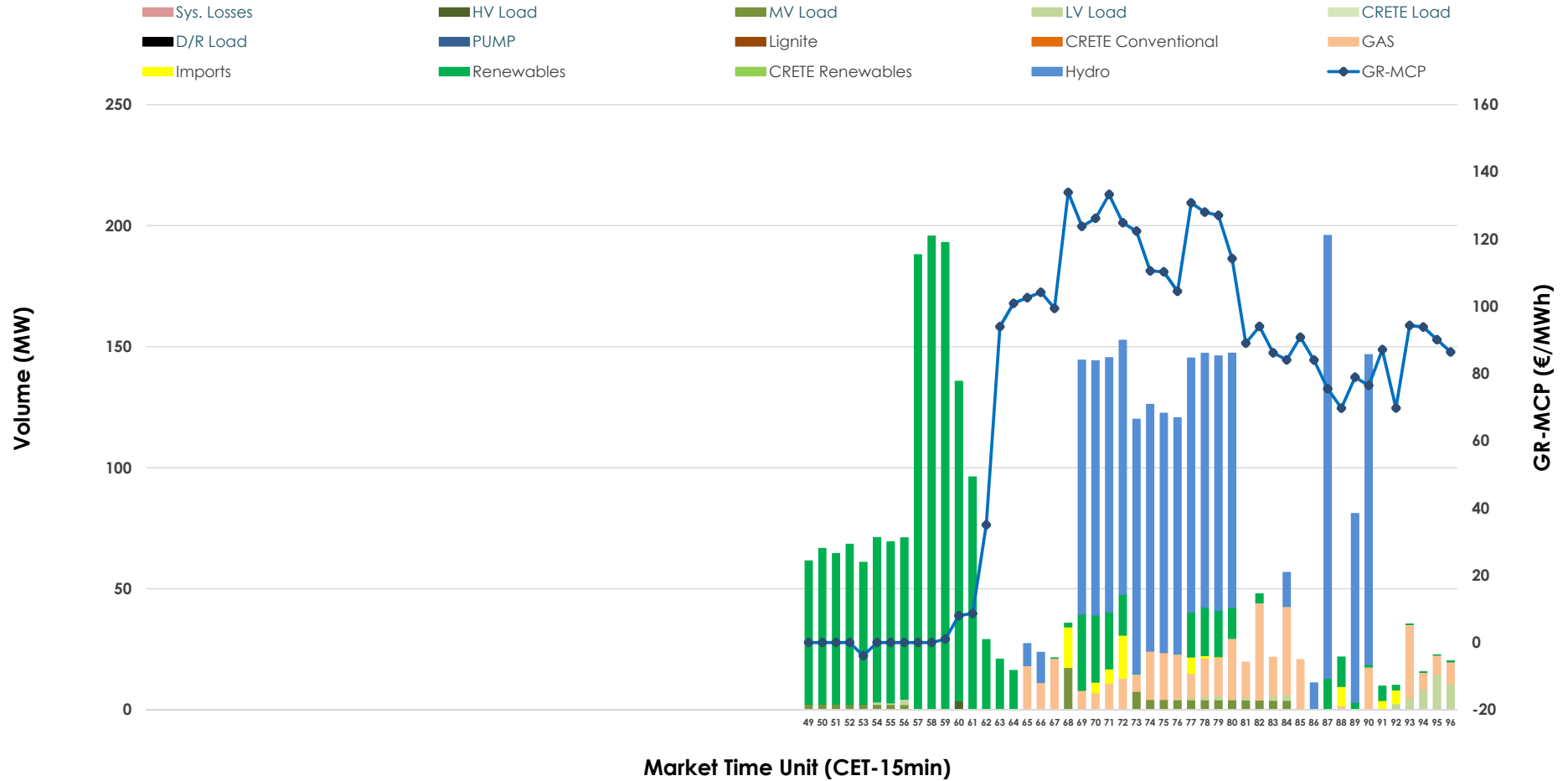


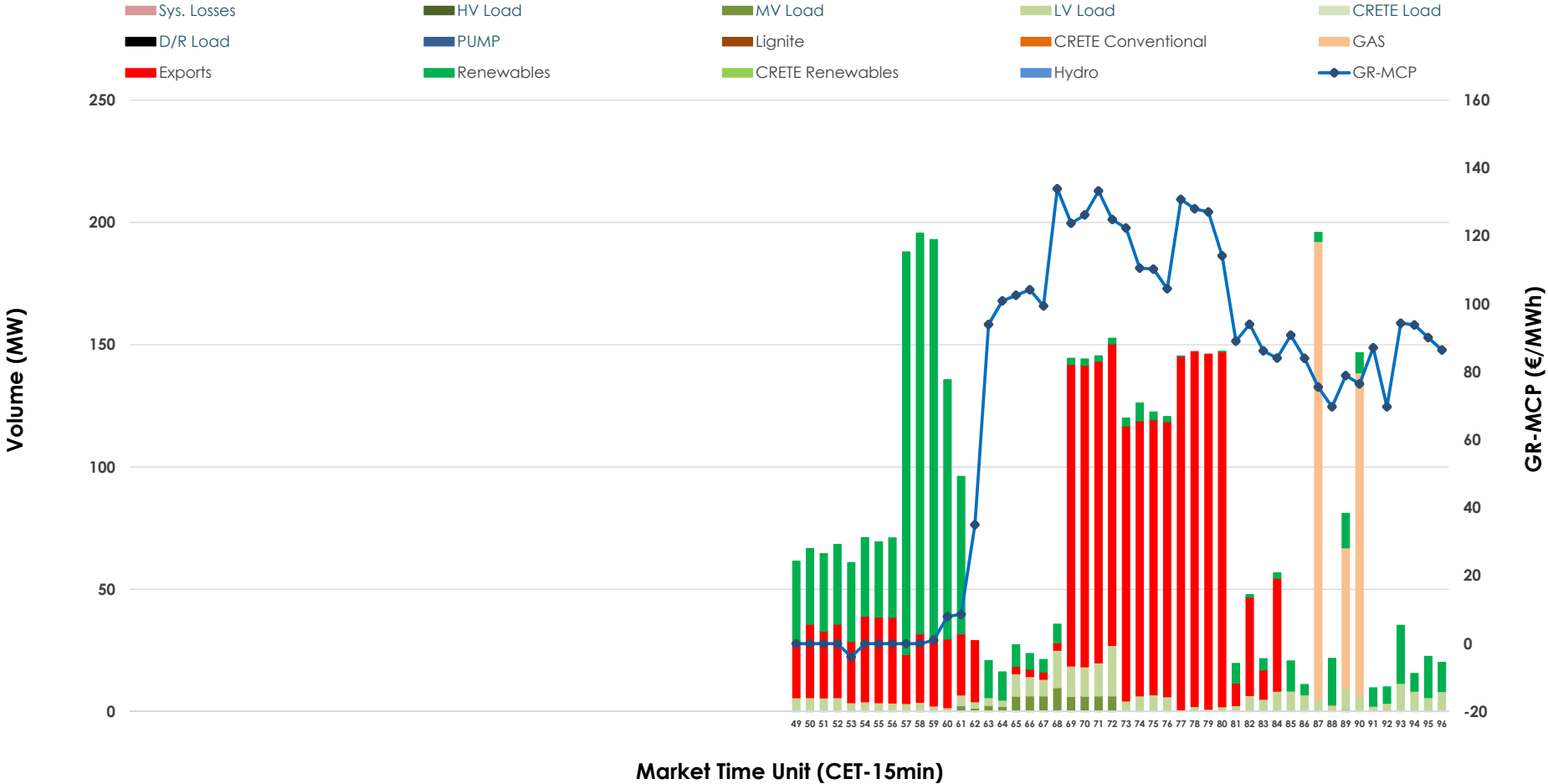


# IDA '3' Market Outlook

24.02.2026 IDA '3' Market - Sell



### 24.02.2026 IDA '3' Market - Buy



### GR Bidding Zone Weekly Figures

Delivery Day	18.02	19.02	20.02	21.02	22.02	23.02	24.02
	↘ -1%	↗ 5%	↗ 3%	→ 0%	↘ -33%	↗ 51%	↗ 1%
<b>Avg.MCP (€/MWh)</b>	66.30	69.73	71.55	71.42	47.58	71.88	72.70
<b>Max.MCP (€/MWh)</b>	183.02	153.38	126.38	112.00	109.84	141.90	133.89
<b>Min.MCP (€/MWh)</b>	-29.99	-35.00	-8.73	-19.99	-20.00	-16.48	-3.93
	↘ -22%	↗ 25%	↗ 4%	↘ -55%	↗ 43%	↘ -2%	↗ 34%
<b>Tot.Vol(GWh)</b>	1.77	2.20	2.30	1.04	1.49	1.46	1.96

### Trades by Order Type

Delivery Day		18.02	19.02	20.02	21.02	22.02	23.02	24.02	
<b>Ord Price Type</b>		<b>Sell &amp; Buy Trades in (GWh) per Price Type</b>							<b>(%)</b>
<b>PPT</b>	(S)	0.000	0.000	0.000	0.000	0.000	0.000	0.000	0.00%
<b>HBD</b>	(S)	0.462	0.312	0.979	0.440	0.465	0.230	0.961	98.21%
<b>BLK</b>	(S)	0.000	0.000	0.000	0.000	0.000	0.000	0.000	0.00%
<b>CPL</b>	(S)	0.421	0.789	0.169	0.082	0.280	0.502	0.018	1.79%
<b>PPT</b>	(B)	0.000	0.000	0.000	0.000	0.000	0.000	0.000	0.00%
<b>HBD</b>	(B)	0.696	0.877	1.098	0.439	0.683	0.713	0.469	47.96%
<b>BLK</b>	(B)	0.000	0.000	0.000	0.000	0.000	0.000	0.000	0.00%
<b>CPL</b>	(B)	0.187	0.224	0.051	0.083	0.062	0.018	0.509	52.04%
		<b>Sell &amp; Buy Orders Traded per Price Type</b>							<b>(%)</b>
<b>PPT</b>	(S)	0	0	0	0	0	0	0	0.00%
<b>HBD</b>	(S)	108	76	215	145	109	209	163	100.00%
<b>BLK</b>	(S)	0	0	0	0	0	0	0	0.00%
<b>PPT</b>	(B)	0	0	0	0	0	0	0	0.00%
<b>HBD</b>	(B)	395	226	286	225	269	216	236	100.00%
<b>BLK</b>	(B)	0	0	0	0	0	0	0	0.00%

- MCP** Market Clearing Price (€/MWh)
- PPT** Priority Price-Taking
- HBD** Hybrid
- BLK** Block
- CPL** Market Coupling Flow

### Trade's Volume Mix

		Sell - MWh		Buy - MWh	
<b>Lignite</b>	(0.0%)	0	0	0	(0.0%)
<b>Crete Conv.</b>	(0.0%)	0	0	0	(0.0%)
<b>Gas</b>	(10.8%)	106	94		(9.6%)
<b>Hydro</b>	(42.9%)	420	0		(0.0%)
<b>Imports</b>	(1.8%)	18			
<b>RES</b>	(40.8%)	399	287		(29.3%)
<b>Crete RES</b>	(0.0%)	0	0		(0.0%)
<b>HV Load</b>	(0.1%)	1	0		(0.0%)
<b>MV Load</b>	(2.2%)	22	17		(1.7%)
<b>LV Load</b>	(1.4%)	14	71		(7.2%)
<b>Crete Load</b>	(0.0%)	0	0		(0.0%)
<b>Pumping</b>	(0.0%)	0	0		(0.0%)
<b>Exports</b>				509	(52.0%)
<b>Sys.Losses</b>	(0.0%)	0	0		(0.0%)
<b>D/R Load</b>	(0.0%)	0	0		(0.0%)

