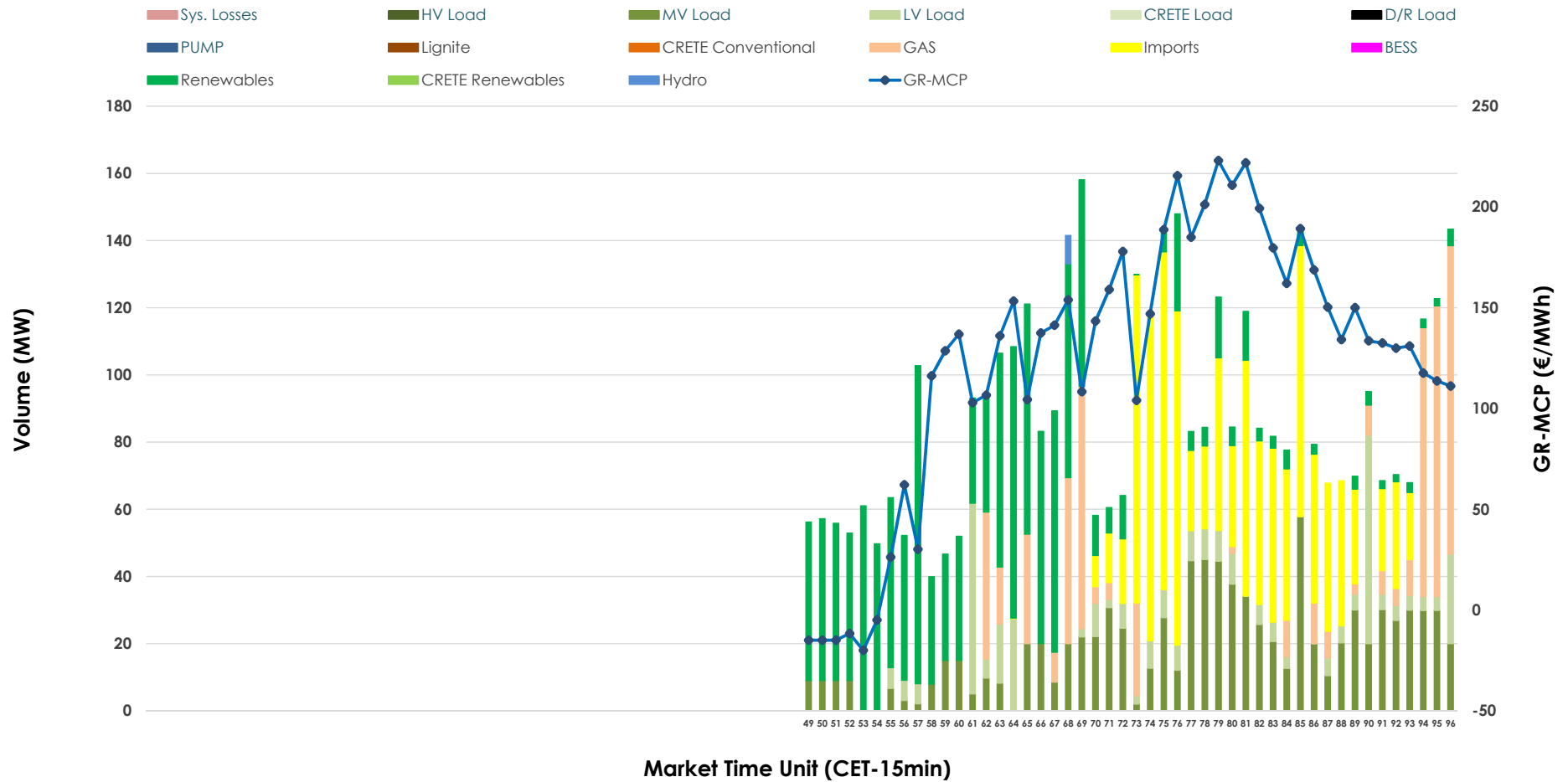


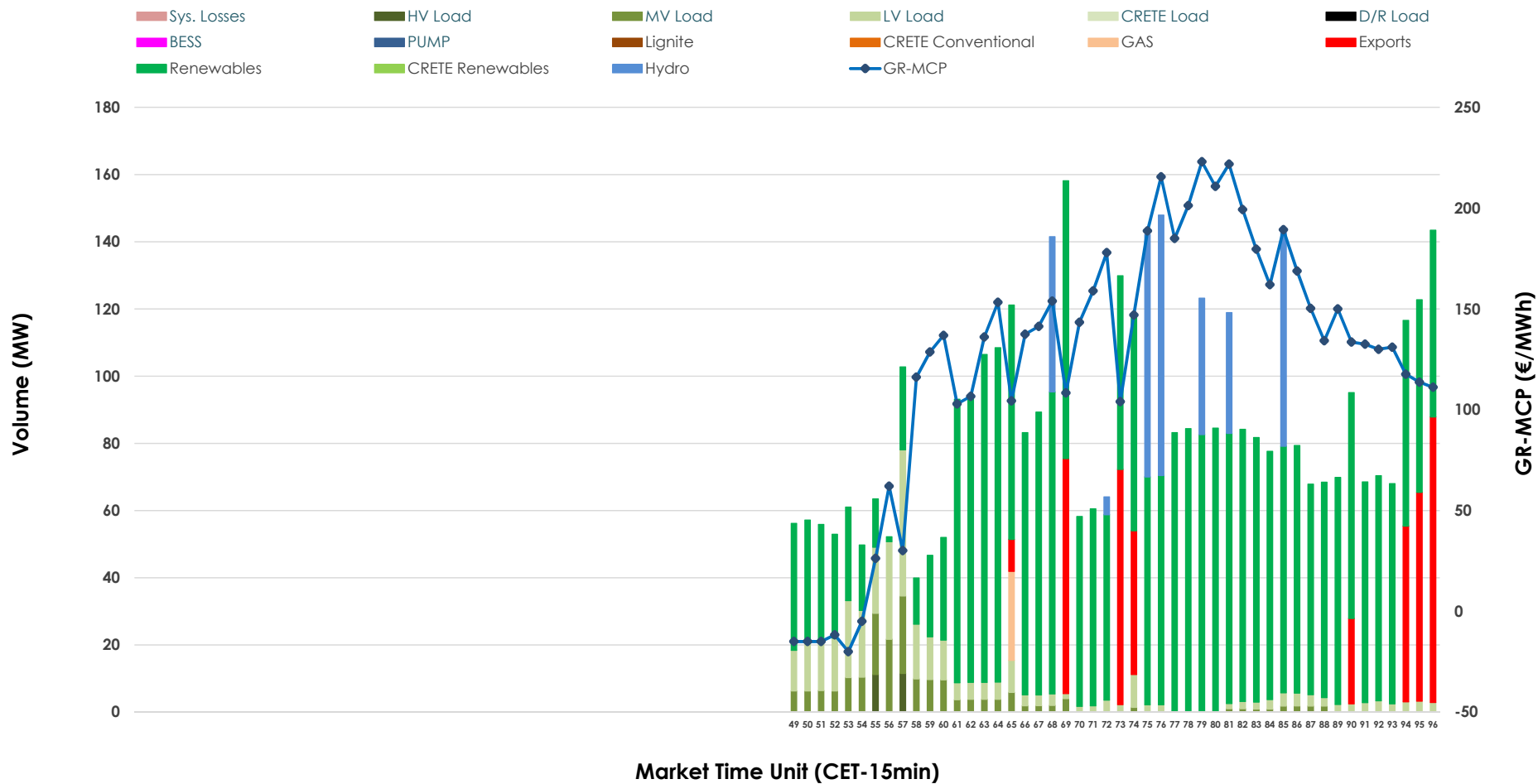


IDA '3' Market Outlook

30.03.2026 IDA '3' Market - Sell



30.03.2026 IDA '3' Market - Buy



GR Bidding Zone Weekly Figures

Delivery Day	24.03	25.03	26.03	27.03	28.03	29.03	30.03
	👉 -29%	👉 -16%	👉 -22%	👈 33%	👉 -5%	👉 -31%	👈 76%
Avg.MCP (€/MWh)	121.58	102.12	79.75	106.28	101.47	70.23	123.82
Max.MCP (€/MWh)	203.53	205.42	161.54	137.74	170.33	145.02	223.00
Min.MCP (€/MWh)	15.87	-7.26	-43.75	23.02	8.73	-18.36	-19.98
	👉 0%	👇 -36%	👈 110%	👉 24%	👉 -29%	👉 -28%	👈 45%
Tot.Vol(GWh)	1.71	1.10	2.31	2.88	2.05	1.47	2.13

Trades by Order Type

Delivery Day		24.03	25.03	26.03	27.03	28.03	29.03	30.03	
Ord Price Type		Sell & Buy Trades in (GWh) per Price Type							(%)
PPT	(S)	0.000	0.000	0.000	0.000	0.000	0.000	0.000	0.00%
HBD	(S)	0.430	0.414	0.535	0.901	0.787	0.667	0.789	74.12%
BLK	(S)	0.000	0.000	0.000	0.000	0.000	0.000	0.000	0.00%
CPL	(S)	0.426	0.138	0.622	0.540	0.239	0.070	0.275	25.88%
PPT	(B)	0.000	0.000	0.000	0.000	0.000	0.000	0.000	0.00%
HBD	(B)	0.677	0.353	0.650	0.976	0.857	0.249	0.960	90.20%
BLK	(B)	0.000	0.000	0.000	0.000	0.000	0.000	0.000	0.00%
CPL	(B)	0.178	0.199	0.508	0.465	0.169	0.487	0.104	9.80%
		Sell & Buy Orders Traded per Price Type							(%)
PPT	(S)	0	0	0	0	0	0	0	0.00%
HBD	(S)	158	224	156	139	200	193	244	100.00%
BLK	(S)	0	0	0	0	0	0	0	0.00%
PPT	(B)	0	0	0	0	0	0	0	0.00%
HBD	(B)	273	143	142	281	259	130	241	100.00%
BLK	(B)	0	0	0	0	0	0	0	0.00%

- MCP** Market Clearing Price (€/MWh)
- PPT** Priority Price-Taking
- HBD** Hybrid
- BLK** Block
- CPL** Market Coupling Flow

Trade's Volume Mix

	Sell - MWh	Buy - MWh	
Lignite (0.0%)	0	0	(0.0%)
Crete Conv. (0.0%)	0	0	(0.0%)
Gas (13.8%)	147	7	(0.6%)
Hydro (0.2%)	2	85	(8.0%)
Imports (25.9%)	275		
RES (30.2%)	322	731	(68.7%)
Crete RES (0.0%)	0	0	(0.0%)
BESS (0.0%)	0	0	(0.0%)
HV Load (0.0%)	0	6	(0.5%)
MV Load (21.6%)	230	45	(4.3%)
LV Load (8.2%)	88	86	(8.1%)
Crete Load (0.0%)	0	0	(0.0%)
Pumping (0.0%)	0	0	(0.0%)
Exports		104	(9.8%)
Sys.Losses (0.0%)	0	0	(0.0%)
D/R Load (0.0%)	0	0	(0.0%)

