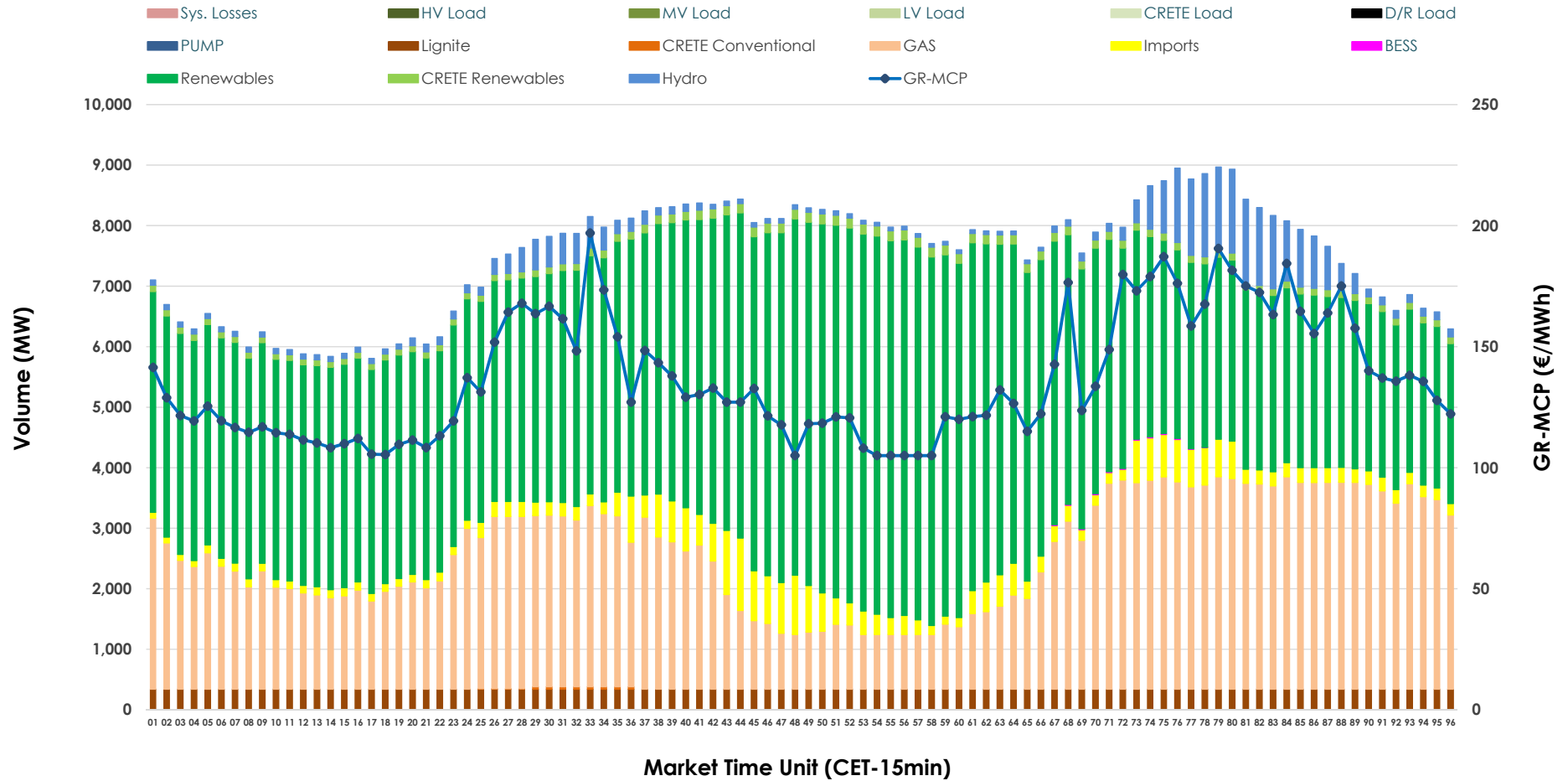


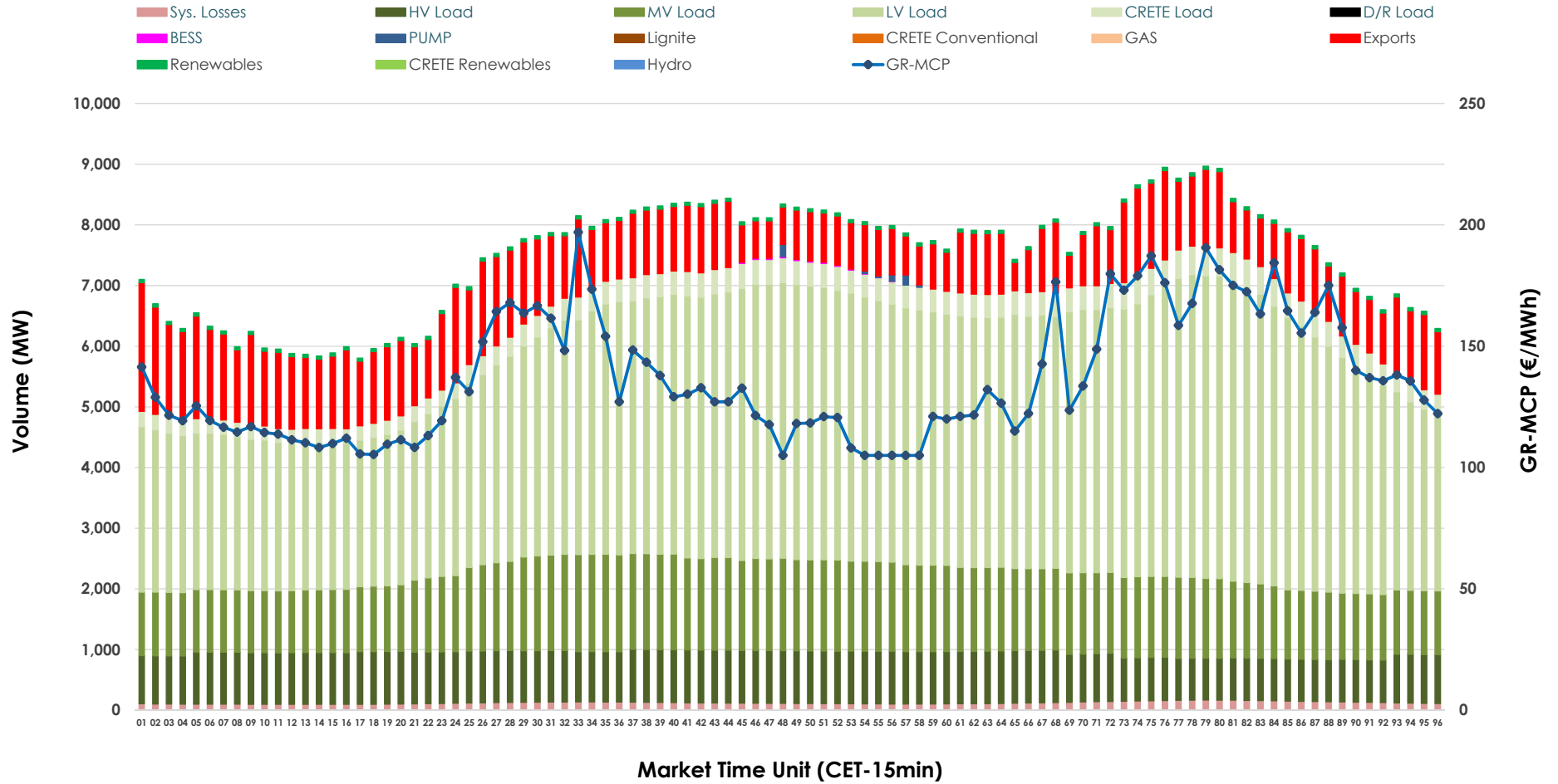


Day-Ahead Market Outlook

02.04.2026 Day-Ahead Market - Sell



02.04.2026 Day-Ahead Market - Buy



GR Bidding Zone Weekly Figures

Delivery Day	27.03	28.03	29.03	30.03	31.03	01.04	02.04
	↗ 14%	↘ -12%	↘ -6%	↗ 50%	↗ 13%	↗ 16%	↘ -12%
Avg.MCP (€/MWh)	94.87	83.88	78.67	118.01	133.84	154.99	136.58
Max.MCP (€/MWh)	153.06	161.79	159.68	223.00	218.54	239.12	196.93
Min.MCP (€/MWh)	0.01	5.02	0.00	0.02	91.97	119.18	105.00
	↗ 6%	↘ -14%	↘ -6%	↗ 10%	↗ 3%	↗ 3%	⇒ 0%
Tot.Vol(GWh)	387.51	331.32	310.02	341.69	350.68	361.49	360.02

Trades by Order Type

Delivery Day		27.03	28.03	29.03	30.03	31.03	01.04	02.04	
Ord Price Type		Sell & Buy Trades in (GWh) per Price Type							(%)
PPT	(S)	78.719	58.210	53.869	52.119	53.482	56.513	68.739	38.19%
HBD	(S)	84.049	62.984	60.502	74.533	74.499	74.726	73.492	40.83%
BLK	(S)	28.633	30.164	21.936	30.517	40.412	41.726	33.560	18.64%
CPL	(S)	2.353	14.305	18.705	13.675	6.945	7.778	4.221	2.34%
PPT	(B)	15.198	13.590	14.311	13.444	14.177	14.771	14.608	8.12%
HBD	(B)	148.574	141.361	124.133	136.551	141.287	148.563	151.077	83.93%
BLK	(B)	0.000	0.000	0.000	0.000	0.000	0.000	0.000	0.00%
CPL	(B)	29.982	10.712	16.567	20.849	19.875	17.409	14.326	7.96%
		Sell & Buy Orders Traded per Price Type							(%)
PPT	(S)	1770	1745	1557	1546	1555	1558	1510	33.27%
HBD	(S)	2960	3058	2506	3107	3233	3061	3012	66.37%
BLK	(S)	11	11	11	15	18	20	16	0.35%
PPT	(B)	2269	2321	2235	2243	2259	2261	2271	35.26%
HBD	(B)	4176	4177	3949	4044	4031	4083	4170	64.74%
BLK	(B)	0	0	0	0	0	0	0	0.00%

- MCP** Market Clearing Price (€/MWh)
- PPT** Priority Price-Taking
- HBD** Hybrid
- BLK** Block
- CPL** Market Coupling Flow

Trade's Volume Mix

		Sell - MWh	Buy - MWh	
Lignite	(4.5%)	8,160	0	(0.0%)
Crete Conv.	(0.0%)	88	0	(0.0%)
Gas	(30.4%)	54,713	0	(0.0%)
Hydro	(3.8%)	6,896	0	(0.0%)
Imports	(4.5%)	8,111		
RES	(55.0%)	99,006	1,260	(0.7%)
Crete RES	(1.7%)	2,994	0	(0.0%)
BESS	(0.0%)	44	52	(0.0%)
HV Load	(0.0%)	0	19,627	(10.9%)
MV Load	(0.0%)	0	31,300	(17.4%)
LV Load	(0.0%)	0	90,347	(50.2%)
Crete Load	(0.0%)	0	8,457	(4.7%)
Pumping	(0.0%)	0	144	(0.1%)
Exports			25,894	(14.4%)
Sys.Losses	(0.0%)	0	2,931	(1.6%)
D/R Load	(0.0%)	0	0	(0.0%)

