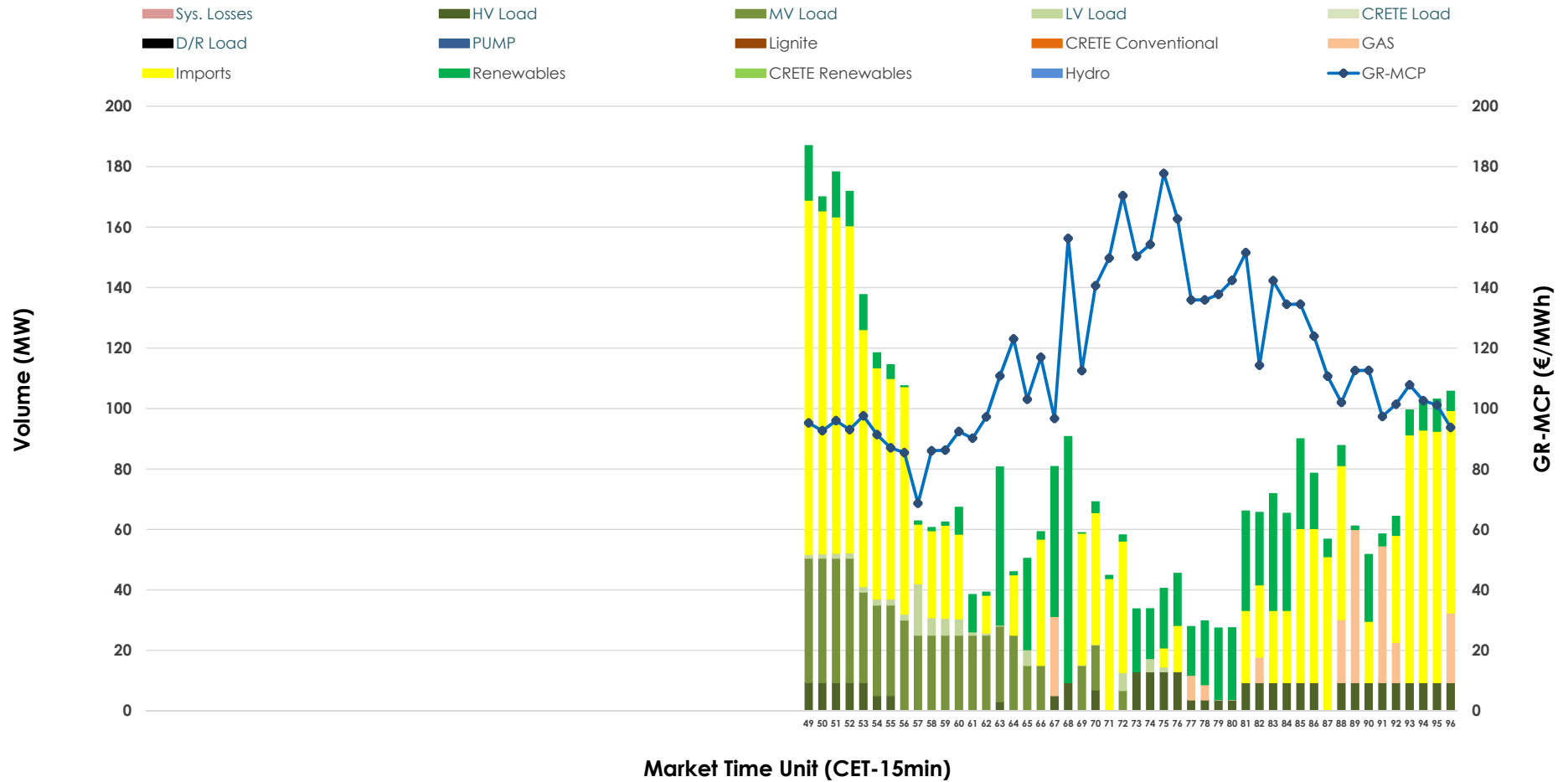


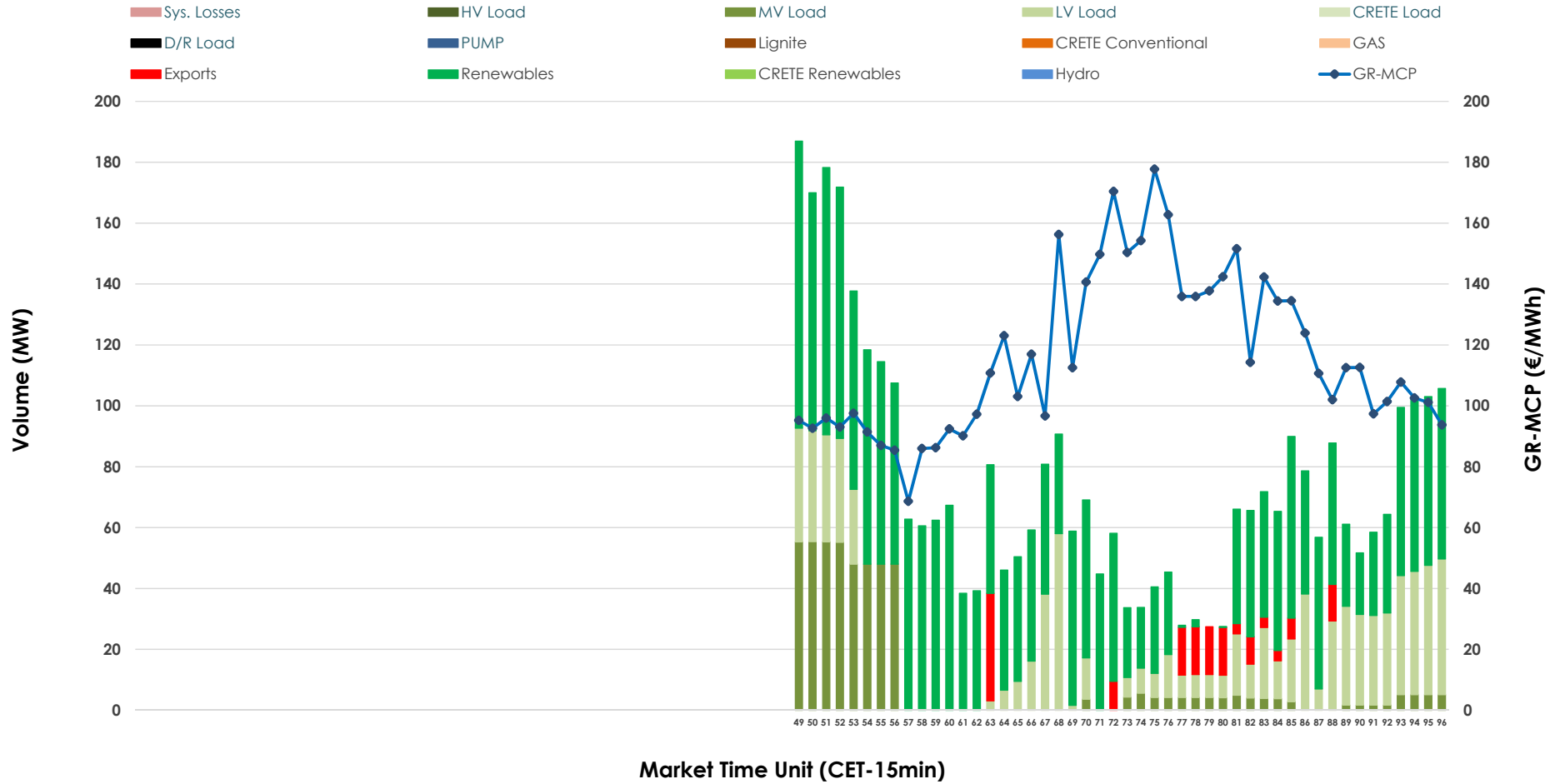


IDA '3' Market Outlook

17.03.2026 IDA '3' Market - Sell



17.03.2026 IDA '3' Market - Buy



GR Bidding Zone Weekly Figures

Delivery Day	11.03	12.03	13.03	14.03	15.03	16.03	17.03
	↗ 21%	↗ 5%	↘ -45%	↗ 25%	↘ -6%	↗ 55%	↘ -11%
Avg.MCP (€/MWh)	123.76	129.75	72.01	90.25	84.79	131.09	116.23
Max.MCP (€/MWh)	247.55	266.91	185.96	172.47	154.76	217.49	177.74
Min.MCP (€/MWh)	-7.31	-29.99	-17.88	-9.52	-13.13	11.16	68.62
	↘ -35%	↗ 63%	↗ 17%	↘ -1%	↘ -51%	↗ 99%	↘ -29%
Tot.Vol(GWh)	1.39	2.26	2.65	2.61	1.29	2.57	1.82

Trades by Order Type

Delivery Day		11.03	12.03	13.03	14.03	15.03	16.03	17.03	
Ord Price Type		Sell & Buy Trades in (GWh) per Price Type							(%)
PPT	(S)	0.000	0.000	0.000	0.000	0.000	0.000	0.000	0.00%
HBD	(S)	0.399	1.044	1.304	1.299	0.607	1.094	0.460	50.42%
BLK	(S)	0.000	0.000	0.000	0.000	0.000	0.000	0.000	0.00%
CPL	(S)	0.296	0.086	0.020	0.007	0.038	0.191	0.452	49.58%
PPT	(B)	0.000	0.000	0.000	0.000	0.000	0.000	0.000	0.00%
HBD	(B)	0.467	0.601	0.689	0.457	0.321	0.799	0.876	96.01%
BLK	(B)	0.000	0.000	0.000	0.000	0.000	0.000	0.000	0.00%
CPL	(B)	0.228	0.528	0.635	0.848	0.323	0.486	0.036	3.99%
		Sell & Buy Orders Traded per Price Type							(%)
PPT	(S)	0	0	0	0	0	0	0	0.00%
HBD	(S)	137	224	241	207	85	235	217	100.00%
BLK	(S)	0	0	0	0	0	0	0	0.00%
PPT	(B)	0	0	0	0	0	0	0	0.00%
HBD	(B)	245	167	127	121	107	174	306	100.00%
BLK	(B)	0	0	0	0	0	0	0	0.00%

- MCP** Market Clearing Price (€/MWh)
- PPT** Priority Price-Taking
- HBD** Hybrid
- BLK** Block
- CPL** Market Coupling Flow

Trade's Volume Mix

		Sell - MWh	Buy - MWh	
Lignite	(0.0%)	0	0	(0.0%)
Crete Conv.	(0.0%)	0	0	(0.0%)
Gas	(5.5%)	50	0	(0.0%)
Hydro	(0.0%)	0	0	(0.0%)
Imports	(49.6%)	452		
RES	(20.1%)	183	543	(59.5%)
Crete RES	(0.0%)	0	0	(0.0%)
HV Load	(7.8%)	72	0	(0.0%)
MV Load	(15.1%)	138	125	(13.7%)
LV Load	(1.8%)	17	208	(22.8%)
Crete Load	(0.0%)	0	0	(0.0%)
Pumping	(0.0%)	0	0	(0.0%)
Exports			36	(4.0%)
Sys.Losses	(0.0%)	0	0	(0.0%)
D/R Load	(0.0%)	0	0	(0.0%)

