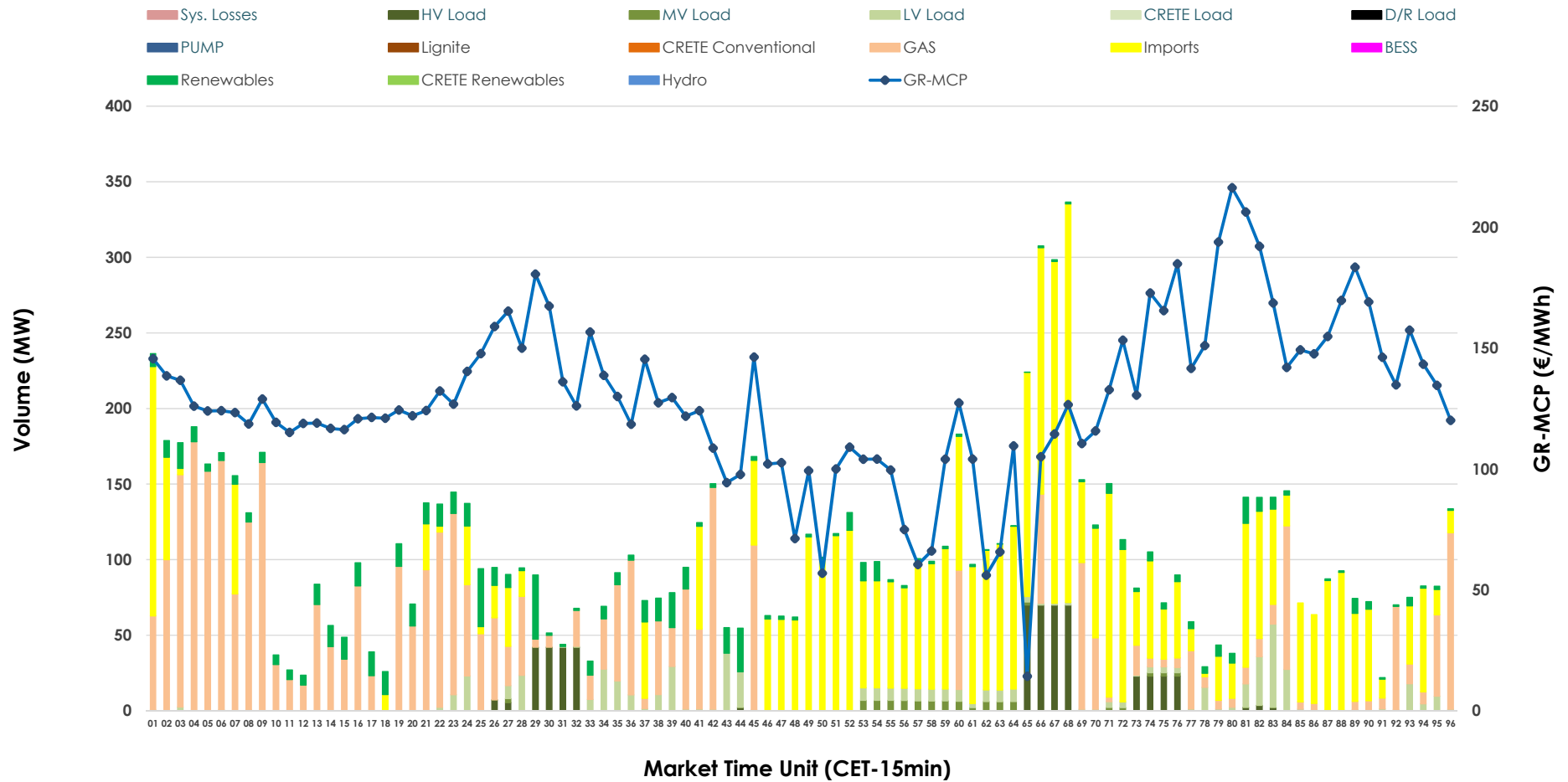


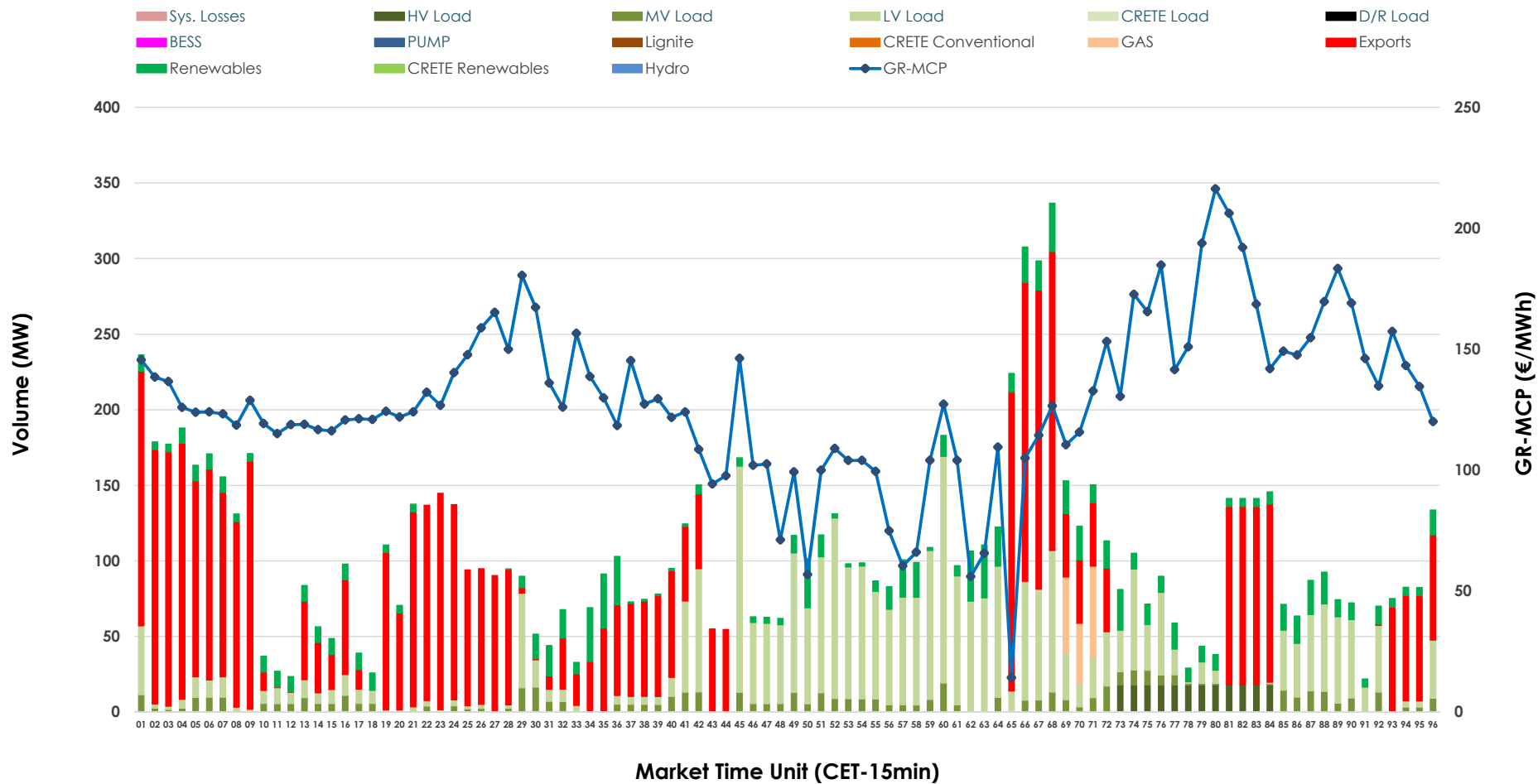


# IDA '1' Market Outlook

03.04.2026 IDA '1' Market - Sell



### 03.04.2026 IDA '1' Market - Buy



### GR Bidding Zone Weekly Figures

Delivery Day	28.03	29.03	30.03	31.03	01.04	02.04	03.04
	👇 -9%	👇 -16%	👆 66%	👉 11%	👉 17%	👇 -13%	👇 -5%
<b>Avg.MCP (€/MWh)</b>	85.15	71.83	119.14	132.20	154.80	135.24	128.53
<b>Max.MCP (€/MWh)</b>	168.64	149.89	225.95	225.72	247.00	211.87	216.28
<b>Min.MCP (€/MWh)</b>	6.75	-14.99	4.21	91.35	117.05	103.00	14.27
	👇 -8%	👇 -9%	👉 6%	👆 59%	👆 55%	👇 -39%	👉 2%
<b>Tot.Vol(GWh)</b>	3.48	3.15	3.36	5.35	8.30	5.03	5.11

### Trades by Order Type

Delivery Day		28.03	29.03	30.03	31.03	01.04	02.04	03.04	
<b>Ord Price Type</b>		<b>Sell &amp; Buy Trades in (GWh) per Price Type</b>							<b>(%)</b>
<b>PPT</b>	(S)	0.000	0.000	0.000	0.000	0.000	0.000	0.000	0.00%
<b>HBD</b>	(S)	1.243	1.282	1.302	2.355	2.648	1.798	1.416	55.47%
<b>BLK</b>	(S)	0.000	0.000	0.000	0.000	0.000	0.000	0.000	0.00%
<b>CPL</b>	(S)	0.494	0.296	0.377	0.319	1.504	0.717	1.137	44.53%
<b>PPT</b>	(B)	0.000	0.000	0.000	0.000	0.000	0.000	0.000	0.00%
<b>HBD</b>	(B)	1.233	1.228	1.400	2.175	2.116	1.223	1.302	51.00%
<b>BLK</b>	(B)	0.000	0.000	0.000	0.000	0.000	0.000	0.000	0.00%
<b>CPL</b>	(B)	0.505	0.349	0.280	0.499	2.035	1.292	1.251	49.00%
		<b>Sell &amp; Buy Orders Traded per Price Type</b>							<b>(%)</b>
<b>PPT</b>	(S)	0	0	0	0	0	0	0	0.00%
<b>HBD</b>	(S)	290	326	176	376	368	277	381	100.00%
<b>BLK</b>	(S)	0	0	0	0	0	0	0	0.00%
<b>PPT</b>	(B)	0	0	0	0	0	0	0	0.00%
<b>HBD</b>	(B)	694	812	860	719	673	831	586	100.00%
<b>BLK</b>	(B)	0	0	0	0	0	0	0	0.00%

- MCP** Market Clearing Price (€/MWh)
- PPT** Priority Price-Taking
- HBD** Hybrid
- BLK** Block
- CPL** Market Coupling Flow

### Trade's Volume Mix

		Sell - MWh	Buy - MWh	
<b>Lignite</b>	(0.0%)	0	0	(0.0%)
<b>Crete Conv.</b>	(0.0%)	0	0	(0.0%)
<b>Gas</b>	(36.7%)	937	38	(1.5%)
<b>Hydro</b>	(0.0%)	0	0	(0.0%)
<b>Imports</b>	(44.5%)	1,137		
<b>RES</b>	(6.9%)	177	269	(10.5%)
<b>Crete RES</b>	(0.0%)	0	0	(0.0%)
<b>BESS</b>	(0.0%)	0	0	(0.0%)
<b>HV Load</b>	(5.5%)	141	54	(2.1%)
<b>MV Load</b>	(0.9%)	24	149	(5.9%)
<b>LV Load</b>	(5.4%)	138	792	(31.0%)
<b>Crete Load</b>	(0.0%)	0	0	(0.0%)
<b>Pumping</b>	(0.0%)	0	0	(0.0%)
<b>Exports</b>			1,251	(49.0%)
<b>Sys.Losses</b>	(0.0%)	0	0	(0.0%)
<b>D/R Load</b>	(0.0%)	0	0	(0.0%)

