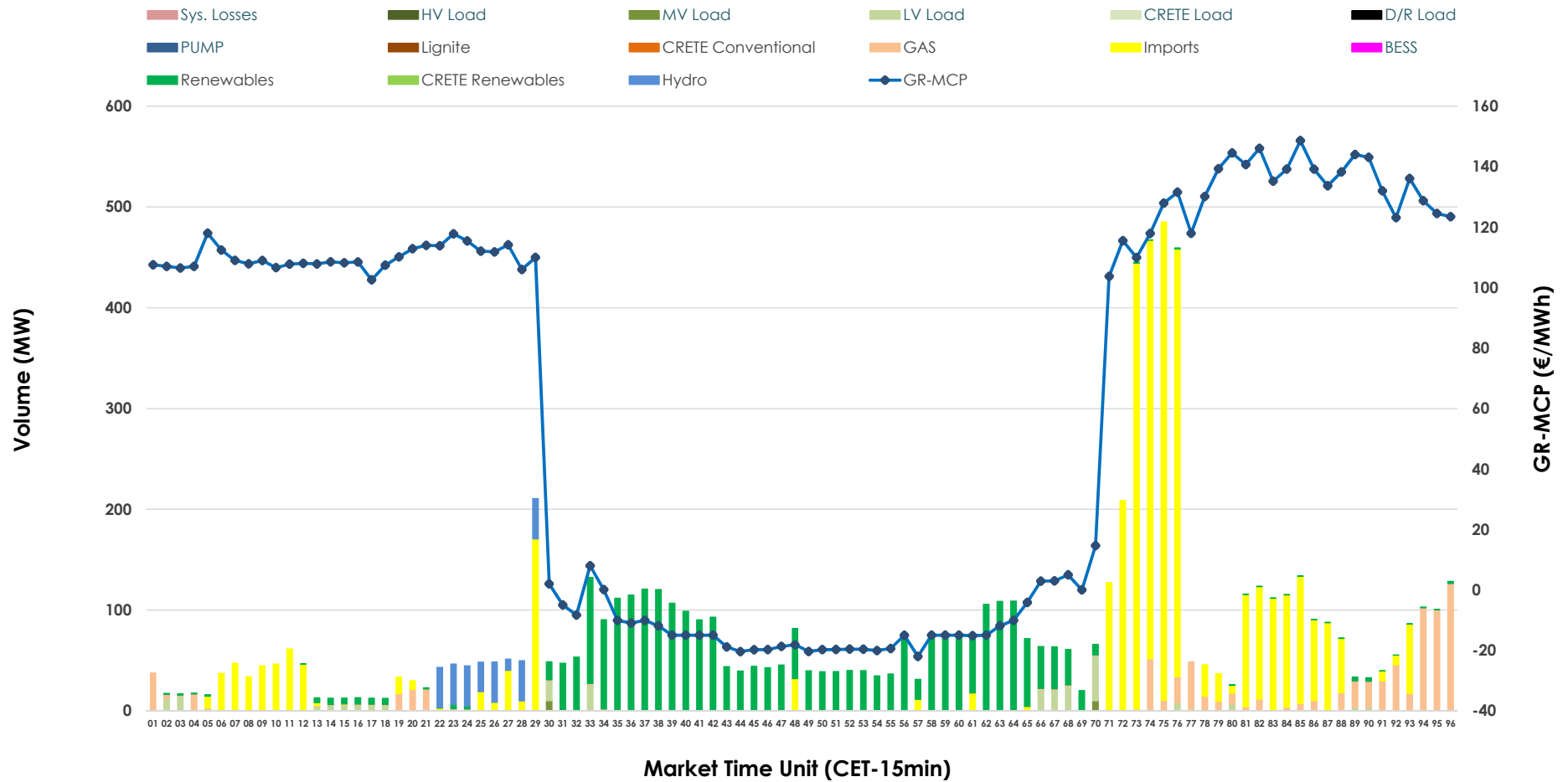


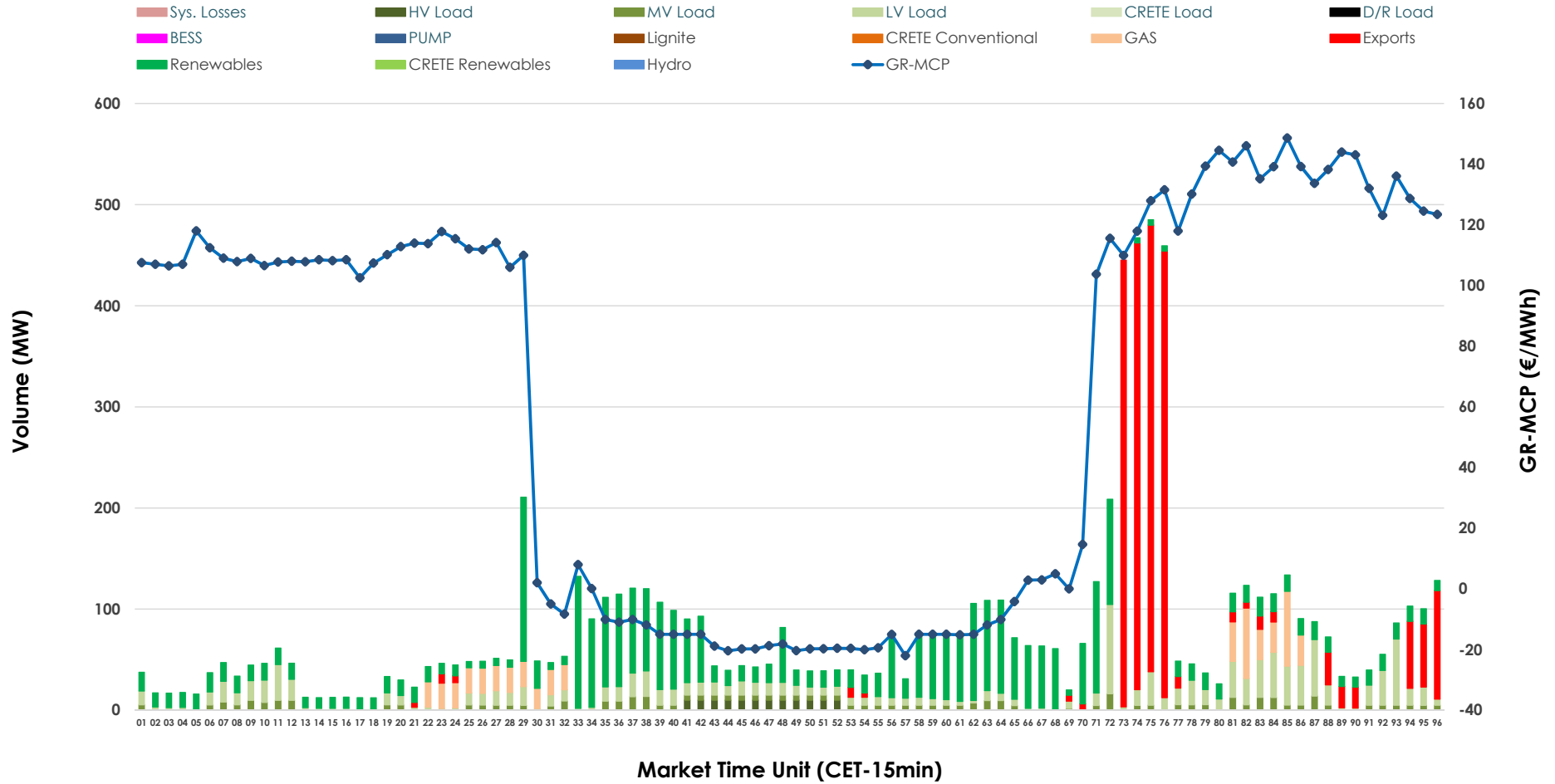


# IDA '1' Market Outlook

18.04.2026 IDA '1' Market - Sell



### 18.04.2026 IDA '1' Market - Buy



### GR Bidding Zone Weekly Figures

Delivery Day	12.04	13.04	14.04	15.04	16.04	17.04	18.04
	👇 -5%	👆 10%	👆 50%	👇 -7%			👇 -14%
<b>Avg.MCP (€/MWh)</b>	80.90	88.91	133.10	124.20	N/M	74.62	63.84
<b>Max.MCP (€/MWh)</b>	160.00	166.41	266.00	172.06	N/M	175.68	148.61
<b>Min.MCP (€/MWh)</b>	-6.33	-12.71	14.48	65.70	N/M	-18.65	-22.01
	👆 29%	👇 -30%	👆 -1%				👆 13%
<b>Tot.Vol(GWh)</b>	4.68	3.28	3.26	N/M	N/M	3.45	3.88

### Trades by Order Type

Delivery Day		12.04	13.04	14.04	15.04	16.04	17.04	18.04	
<b>Ord Price Type</b>		Sell & Buy Trades in (GWh) per Price Type							(%)
<b>PPT</b>	(S)	0.000	0.000	0.000	0.000		0.000	0.000	0.00%
<b>HBD</b>	(S)	1.593	0.819	1.136	0.000		1.172	1.017	52.37%
<b>BLK</b>	(S)	0.000	0.000	0.000	0.000		0.000	0.000	0.00%
<b>CPL</b>	(S)	0.749	0.822	0.492	0.000		0.554	0.925	47.63%
<b>PPT</b>	(B)	0.000	0.000	0.000	0.000		0.000	0.000	0.00%
<b>HBD</b>	(B)	1.271	0.971	0.771	0.000		1.314	1.399	72.04%
<b>BLK</b>	(B)	0.000	0.000	0.000	0.000		0.000	0.000	0.00%
<b>CPL</b>	(B)	1.072	0.670	0.858	0.000		0.411	0.543	27.96%
		Sell & Buy Orders Traded per Price Type							(%)
<b>PPT</b>	(S)	0	0	0	0		0	0	0.00%
<b>HBD</b>	(S)	162	89	127	130		211	158	100.00%
<b>BLK</b>	(S)	0	0	0	0		0	0	0.00%
<b>PPT</b>	(B)	0	0	0	0		0	0	0.00%
<b>HBD</b>	(B)	451	567	501	793		634	880	100.00%
<b>BLK</b>	(B)	0	0	0	0		0	0	0.00%

**MCP** Market Clearing Price (€/MWh)  
**PPT** Priority Price-Taking  
**HBD** Hybrid  
**BLK** Block  
**CPL** Market Coupling Flow

### Trade's Volume Mix

	Sell - MWh	Buy - MWh	
<b>Lignite</b> (0.0%)	0	0	(0.0%)
<b>Crete Conv.</b> (0.0%)	0	0	(0.0%)
<b>Gas</b> (10.9%)	212	136	(7.0%)
<b>Hydro</b> (3.6%)	70	0	(0.0%)
<b>Imports</b> (47.6%)	925		
<b>RES</b> (34.3%)	667	784	(40.4%)
<b>Crete RES</b> (0.0%)	0	0	(0.0%)
<b>BESS</b> (0.0%)	0	0	(0.0%)
<b>HV Load</b> (0.0%)	0	30	(1.5%)
<b>MV Load</b> (0.3%)	7	115	(5.9%)
<b>LV Load</b> (3.2%)	61	334	(17.2%)
<b>Crete Load</b> (0.0%)	0	0	(0.0%)
<b>Pumping</b> (0.0%)	0	0	(0.0%)
<b>Exports</b>		543	(28.0%)
<b>Sys.Losses</b> (0.0%)	0	0	(0.0%)
<b>D/R Load</b> (0.0%)	0	0	(0.0%)

