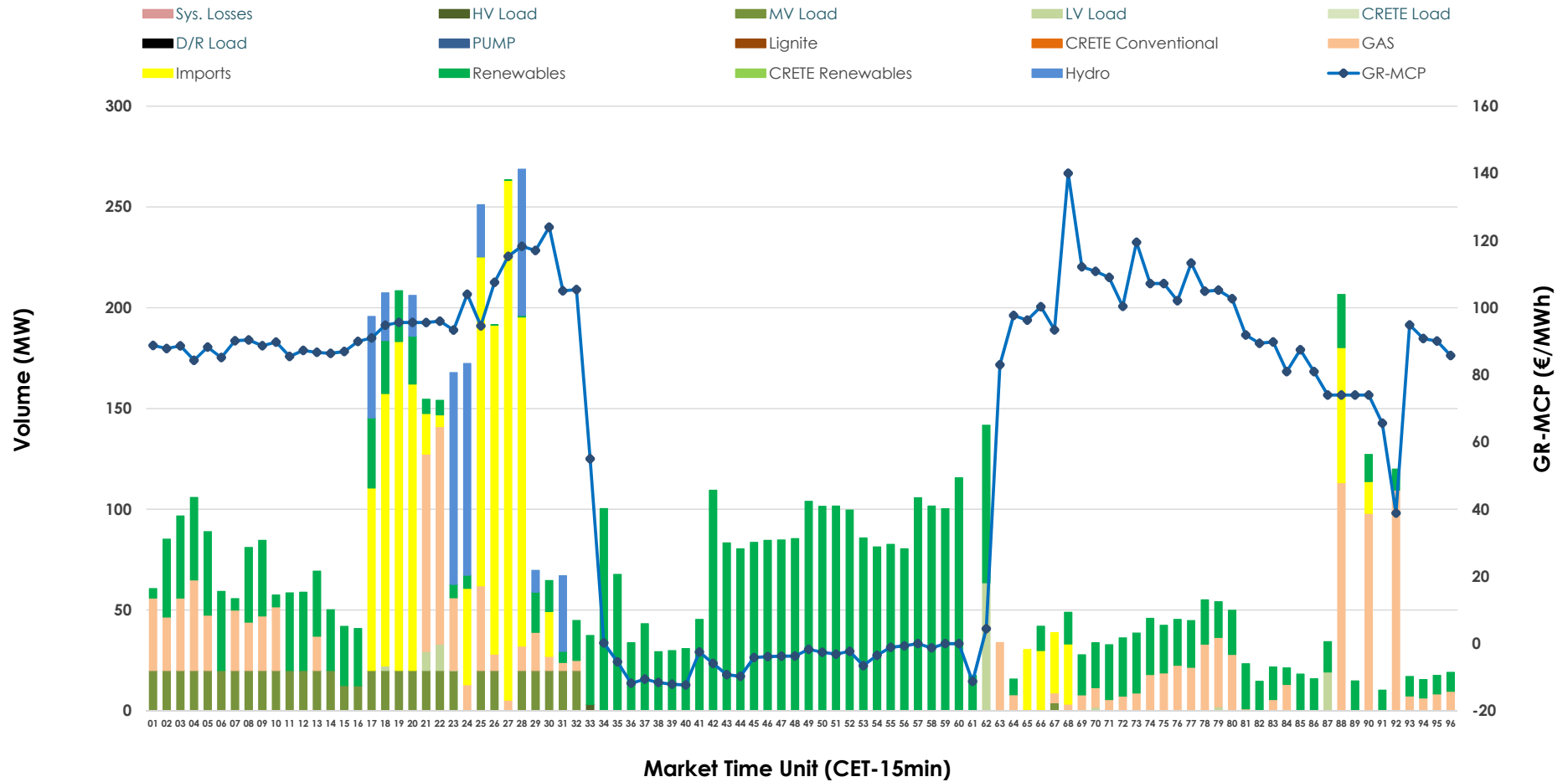


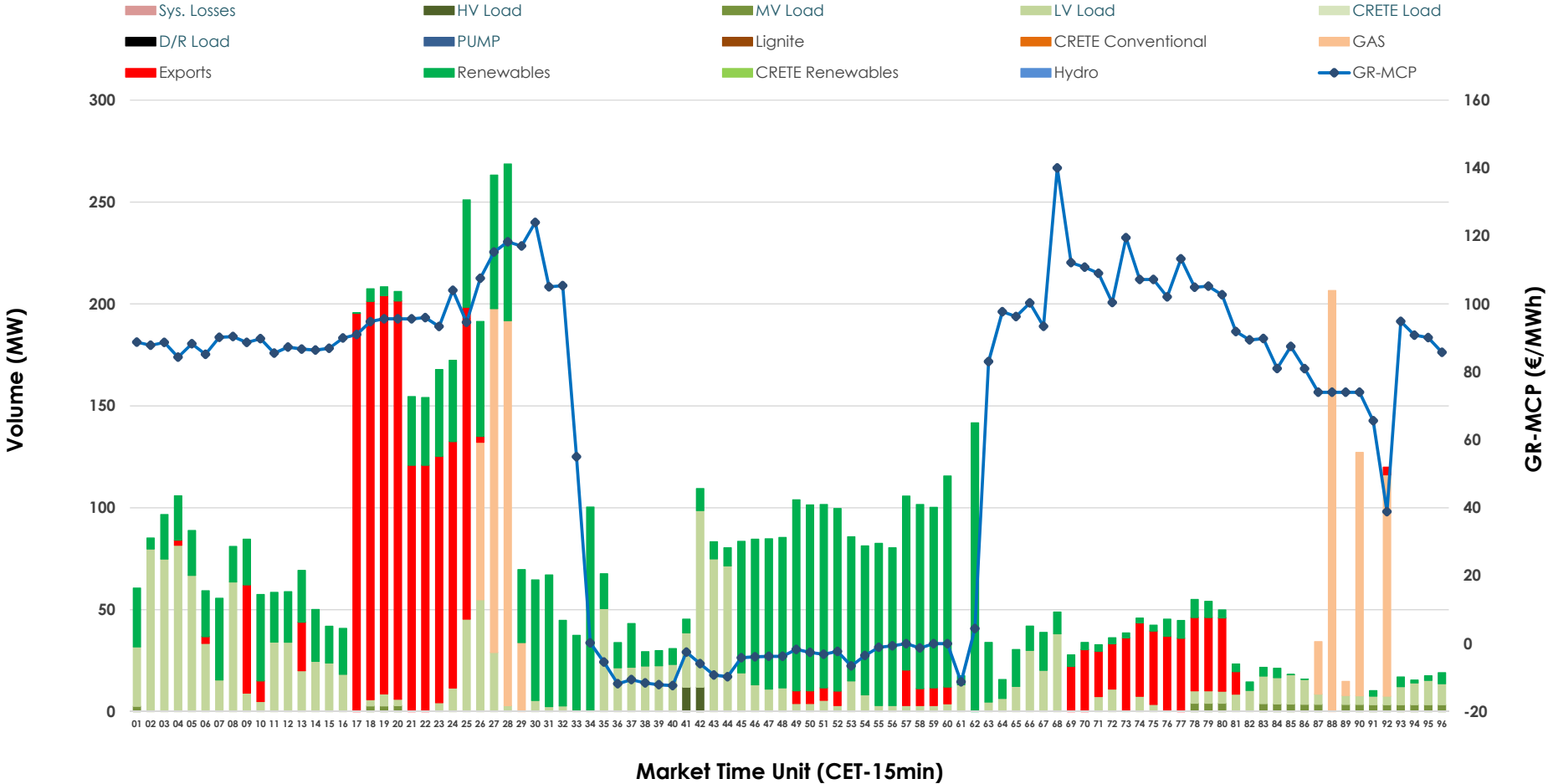


IDA '2' Market Outlook

24.02.2026 IDA '2' Market - Sell



24.02.2026 IDA '2' Market - Buy



GR Bidding Zone Weekly Figures

Delivery Day	18.02	19.02	20.02	21.02	22.02	23.02	24.02
	👇 -19%	👆 24%	👆 4%	👇 -15%	👇 -39%	👆 54%	👆 18%
Avg.MCP (€/MWh)	53.06	66.00	68.42	58.00	35.43	54.51	64.22
Max.MCP (€/MWh)	178.32	170.80	138.20	106.11	105.42	141.61	140.04
Min.MCP (€/MWh)	-15.00	-25.07	-18.00	-8.01	-15.00	-25.00	-12.33
	👆 81%	👇 -51%	👆 45%	👇 -35%	👆 44%	👆 33%	👇 -27%
Tot.Vol(GWh)	5.80	2.86	4.16	2.70	3.90	5.19	3.77

Trades by Order Type

Delivery Day		18.02	19.02	20.02	21.02	22.02	23.02	24.02	
Ord Price Type		Sell & Buy Trades in (GWh) per Price Type							(%)
PPT	(S)	0.000	0.000	0.000	0.000	0.000	0.000	0.000	0.00%
HBD	(S)	2.201	1.182	1.864	0.992	1.726	1.631	1.491	79.08%
BLK	(S)	0.000	0.000	0.000	0.000	0.000	0.000	0.000	0.00%
CPL	(S)	0.700	0.250	0.218	0.361	0.222	0.967	0.394	20.92%
PPT	(B)	0.000	0.000	0.000	0.000	0.000	0.000	0.000	0.00%
HBD	(B)	2.373	0.948	1.819	1.322	1.654	2.441	1.390	73.71%
BLK	(B)	0.000	0.000	0.000	0.000	0.000	0.000	0.000	0.00%
CPL	(B)	0.528	0.483	0.263	0.031	0.294	0.157	0.496	26.29%
		Sell & Buy Orders Traded per Price Type							(%)
PPT	(S)	0	0	0	0	0	0	0	0.00%
HBD	(S)	304	172	327	276	137	271	234	100.00%
BLK	(S)	0	0	0	0	0	0	0	0.00%
PPT	(B)	0	0	0	0	0	0	0	0.00%
HBD	(B)	445	370	525	525	528	382	368	100.00%
BLK	(B)	0	0	0	0	0	0	0	0.00%

- MCP** Market Clearing Price (€/MWh)
- PPT** Priority Price-Taking
- HBD** Hybrid
- BLK** Block
- CPL** Market Coupling Flow

Trade's Volume Mix

	Sell - MWh	Buy - MWh	
Lignite (0.0%)	0	0	(0.0%)
Crete Conv. (0.0%)	0	0	(0.0%)
Gas (17.2%)	324	234	(12.4%)
Hydro (6.0%)	113	0	(0.0%)
Imports (20.9%)	394		
RES (46.6%)	878	724	(38.4%)
Crete RES (0.0%)	0	0	(0.0%)
HV Load (0.0%)	1	6	(0.3%)
MV Load (7.8%)	147	17	(0.9%)
LV Load (1.5%)	28	408	(21.6%)
Crete Load (0.0%)	0	0	(0.0%)
Pumping (0.0%)	0	0	(0.0%)
Exports		496	(26.3%)
Sys.Losses (0.0%)	0	0	(0.0%)
D/R Load (0.0%)	0	0	(0.0%)

