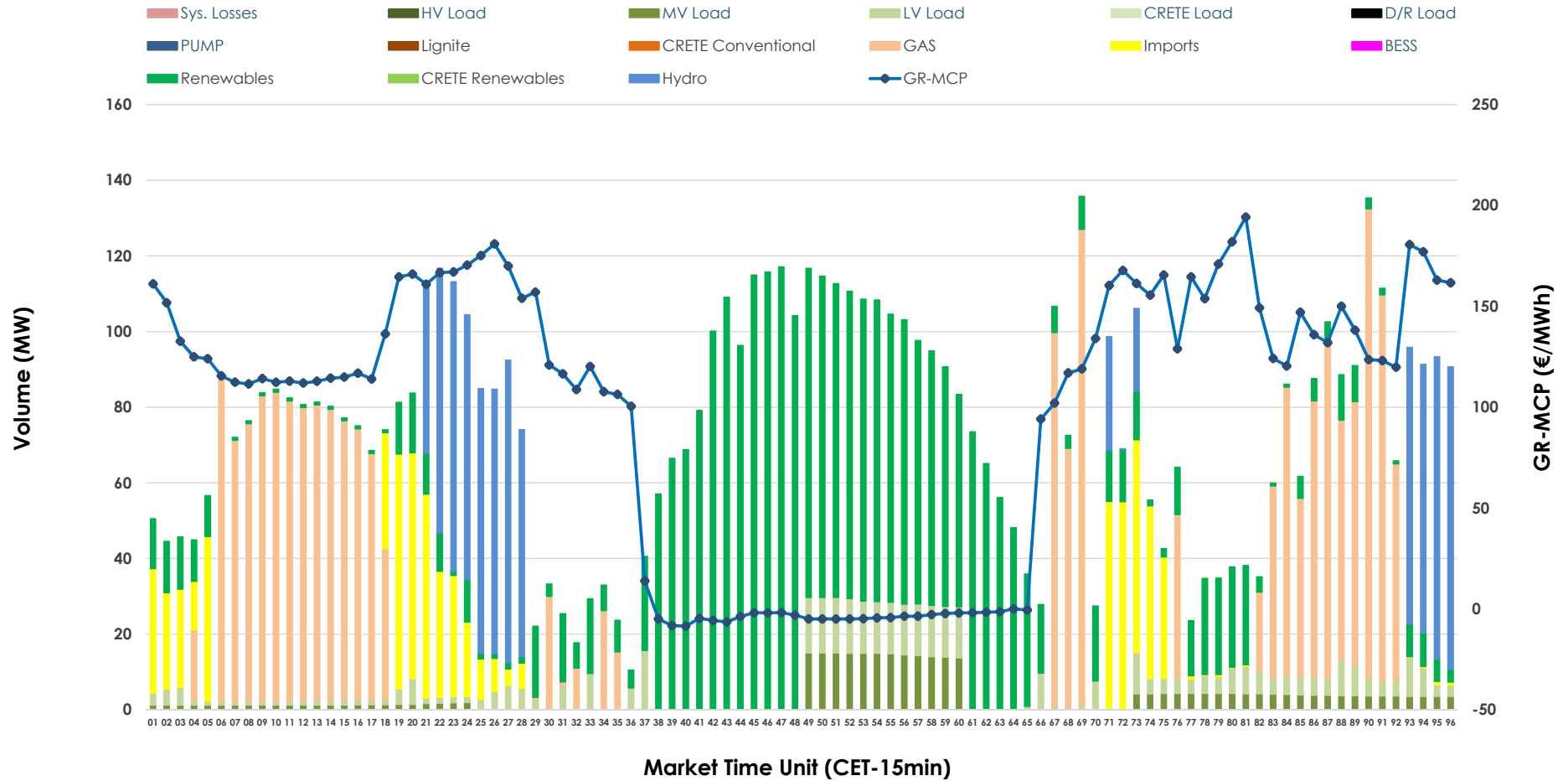


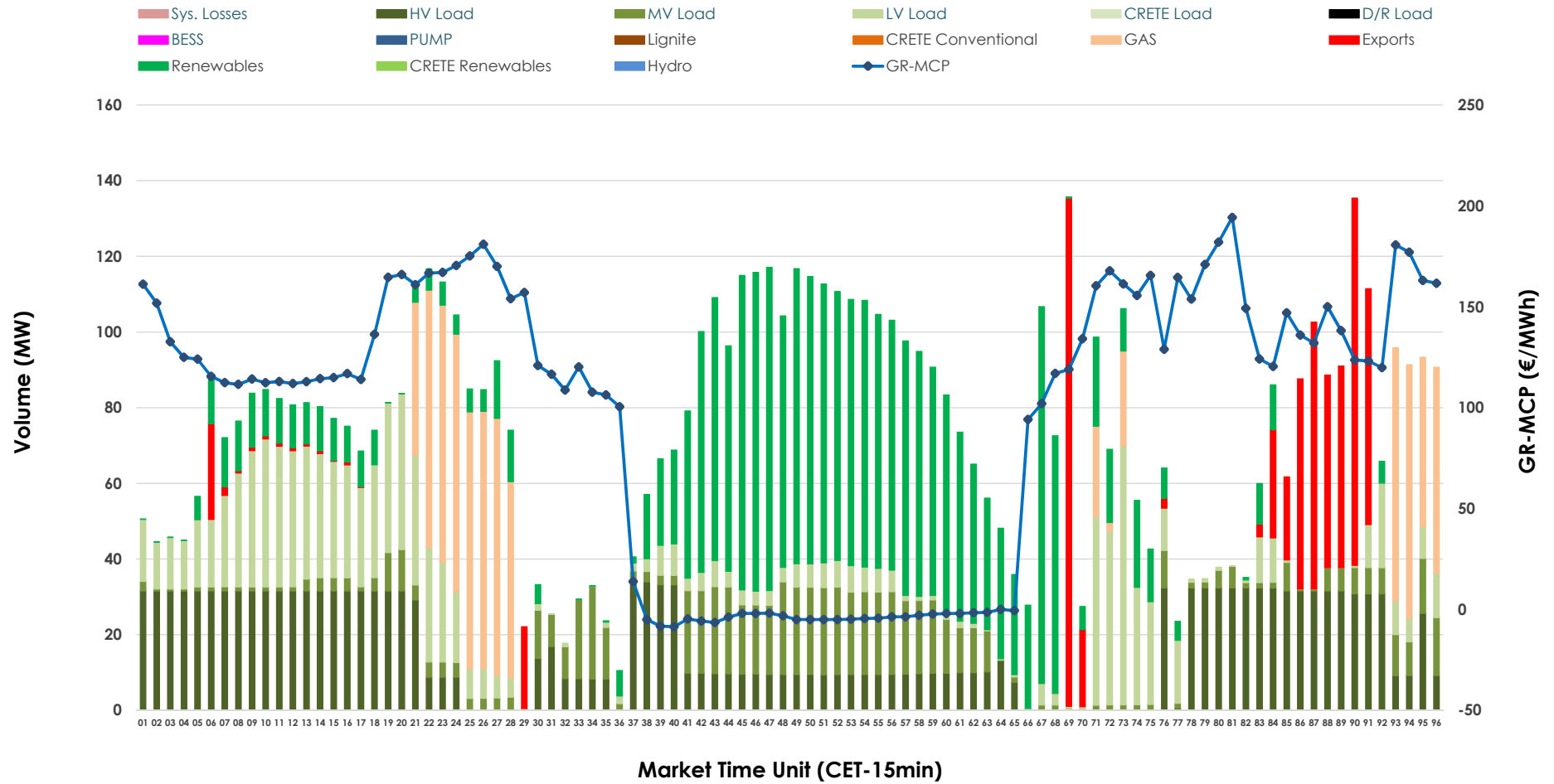


# IDA '1' Market Outlook

11.05.2026 IDA '1' Market - Sell



### 11.05.2026 IDA '1' Market - Buy



### GR Bidding Zone Weekly Figures

Delivery Day	05.05	06.05	07.05	08.05	09.05	10.05	11.05
	➔ -1%	↗ 2%	↗ 20%	↘ 1%	↘ -11%	↘ -17%	↗ 6%
<b>Avg.MCP (€/MWh)</b>	98.84	101.05	121.19	122.42	108.76	90.58	96.19
<b>Max.MCP (€/MWh)</b>	253.79	205.48	183.77	172.30	227.06	202.09	194.26
<b>Min.MCP (€/MWh)</b>	-12.30	-9.97	21.99	61.50	-7.61	-7.78	-8.55
	↗ 11%	↘ -17%	↗ 59%	↘ -3%	➔ 0%	↘ -15%	↘ -1%
<b>Tot.Vol(GWh)</b>	3.38	2.80	4.46	4.31	4.33	3.69	3.64

### Trades by Order Type

Delivery Day		05.05	06.05	07.05	08.05	09.05	10.05	11.05	
<b>Ord Price Type</b>		<b>Sell &amp; Buy Trades in (GWh) per Price Type</b>							<b>(%)</b>
<b>PPT</b>	(S)	0.000	0.000	0.000	0.000	0.000	0.000	0.000	0.00%
<b>HBD</b>	(S)	1.457	0.962	1.499	1.993	1.767	1.660	1.641	90.22%
<b>BLK</b>	(S)	0.000	0.000	0.000	0.000	0.000	0.000	0.000	0.00%
<b>CPL</b>	(S)	0.231	0.439	0.732	0.163	0.400	0.187	0.178	9.78%
<b>PPT</b>	(B)	0.000	0.000	0.000	0.000	0.000	0.000	0.000	0.00%
<b>HBD</b>	(B)	1.327	1.329	2.182	1.176	1.927	1.469	1.655	90.98%
<b>BLK</b>	(B)	0.000	0.000	0.000	0.000	0.000	0.000	0.000	0.00%
<b>CPL</b>	(B)	0.361	0.072	0.049	0.980	0.240	0.378	0.164	9.02%
		<b>Sell &amp; Buy Orders Traded per Price Type</b>							<b>(%)</b>
<b>PPT</b>	(S)	0	0	0	0	0	0	0	0.00%
<b>HBD</b>	(S)	362	155	234	405	360	310	372	100.00%
<b>BLK</b>	(S)	0	0	0	0	0	0	0	0.00%
<b>PPT</b>	(B)	0	0	0	0	0	0	0	0.00%
<b>HBD</b>	(B)	763	823	592	532	554	945	738	100.00%
<b>BLK</b>	(B)	0	0	0	0	0	0	0	0.00%

- MCP** Market Clearing Price (€/MWh)
- PPT** Priority Price-Taking
- HBD** Hybrid
- BLK** Block
- CPL** Market Coupling Flow

### Trade's Volume Mix

		Sell - MWh	Buy - MWh	
<b>Lignite</b>	(0.0%)	0	0	(0.0%)
<b>Crete Conv.</b>	(0.0%)	0	0	(0.0%)
<b>Gas</b>	(29.8%)	541	196	(10.8%)
<b>Hydro</b>	(12.3%)	224	0	(0.0%)
<b>Imports</b>	(9.8%)	178		
<b>RES</b>	(38.1%)	693	549	(30.2%)
<b>Crete RES</b>	(0.0%)	0	0	(0.0%)
<b>BESS</b>	(0.0%)	0	0	(0.0%)
<b>HV Load</b>	(0.0%)	0	423	(23.3%)
<b>MV Load</b>	(4.1%)	75	193	(10.6%)
<b>LV Load</b>	(5.9%)	107	294	(16.2%)
<b>Crete Load</b>	(0.0%)	0	0	(0.0%)
<b>Pumping</b>	(0.0%)	0	0	(0.0%)
<b>Exports</b>			164	(9.0%)
<b>Sys.Losses</b>	(0.0%)	0	0	(0.0%)
<b>D/R Load</b>	(0.0%)	0	0	(0.0%)

