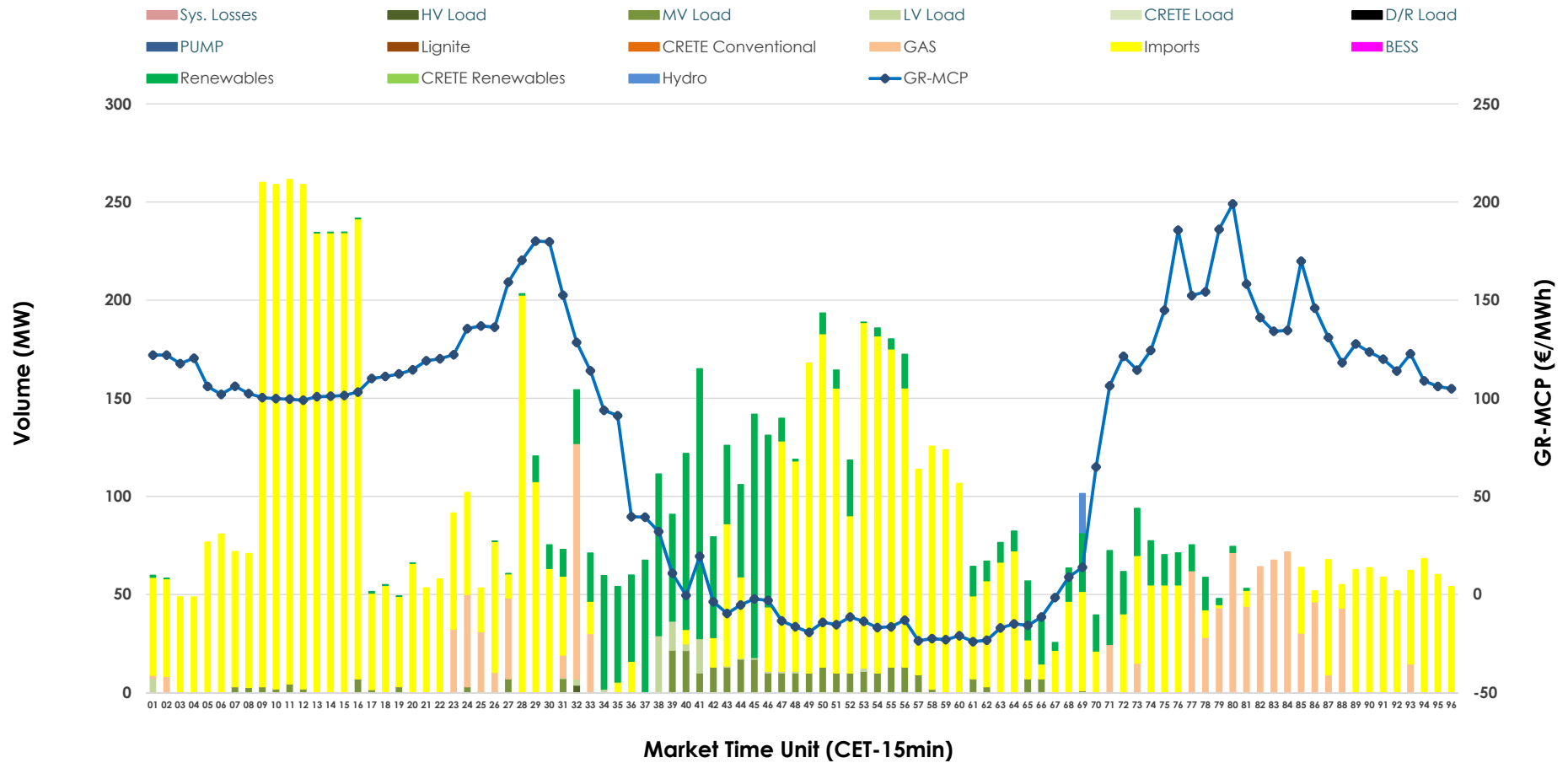


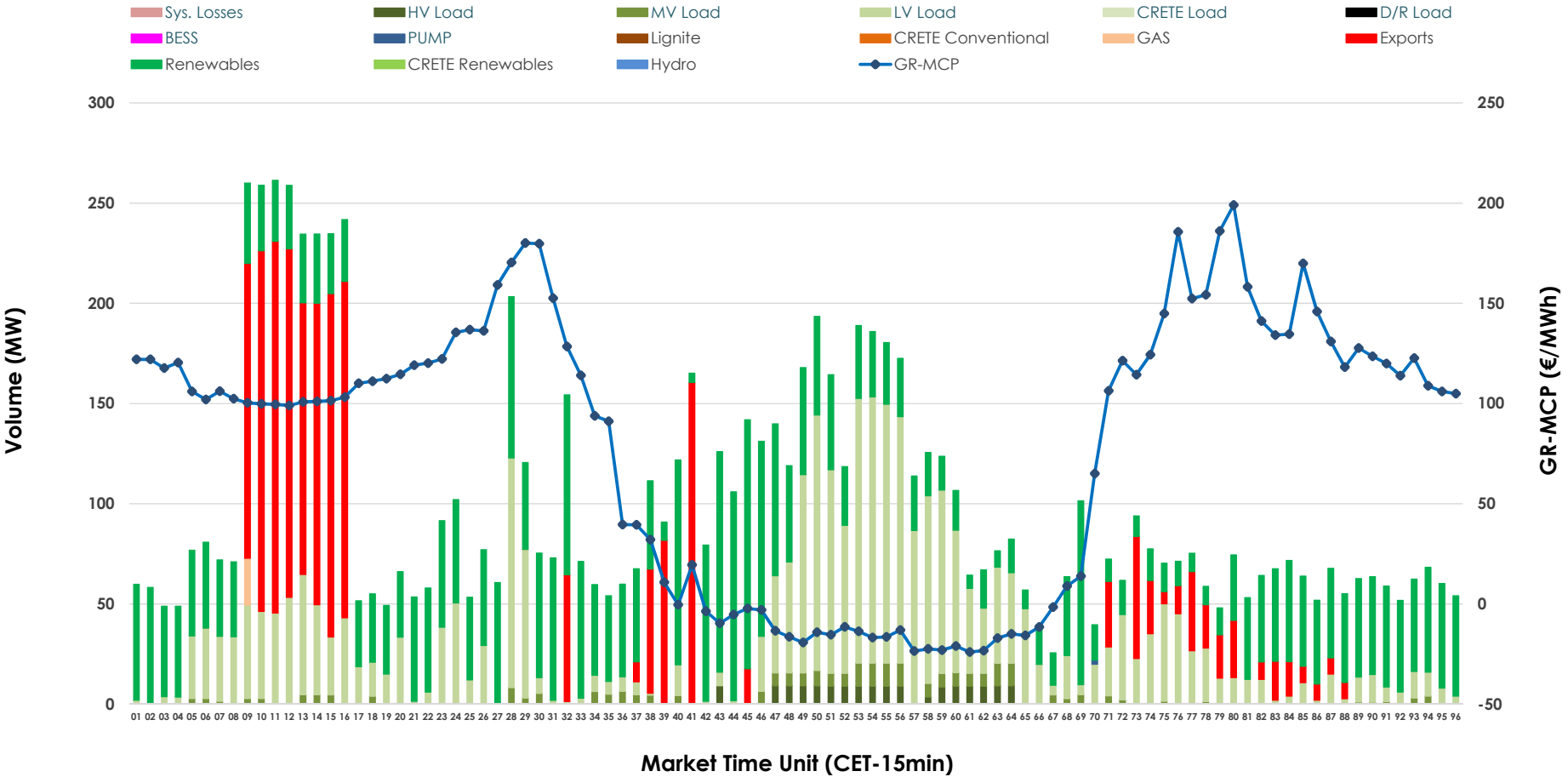


IDA '2' Market Outlook

07.04.2026 IDA '2' Market - Sell



07.04.2026 IDA '2' Market - Buy



GR Bidding Zone Weekly Figures

Delivery Day	01.04	02.04	03.04	04.04	05.04	06.04	07.04
	↗ 11%	↘ -11%	↘ -4%	↘ -52%	↘ -69%	↗ 162%	↗ 55%
Avg.MCP (€/MWh)	150.68	134.81	129.15	62.39	19.53	51.16	79.13
Max.MCP (€/MWh)	227.84	207.31	218.30	150.46	113.90	198.89	199.05
Min.MCP (€/MWh)	103.20	94.56	36.29	-2.10	-50.56	-48.10	-24.00
	↗ 54%	↗ 12%	↘ -23%	↘ -45%	↗ 36%	↗ 27%	↘ -28%
Tot.Vol(GWh)	8.13	9.11	7.02	3.87	5.28	6.68	4.81

Trades by Order Type

Delivery Day	01.04	02.04	03.04	04.04	05.04	06.04	07.04	
Ord Price Type	Sell & Buy Trades in (GWh) per Price Type							(%)
PPT (S)	0.000	0.000	0.000	0.000	0.000	0.000	0.000	0.00%
HBD (S)	2.487	1.846	1.233	1.081	1.962	1.218	0.714	29.68%
BLK (S)	0.000	0.000	0.000	0.000	0.000	0.000	0.000	0.00%
CPL (S)	1.580	2.711	2.278	0.854	0.676	2.124	1.693	70.32%
PPT (B)	0.000	0.000	0.000	0.000	0.000	0.000	0.000	0.00%
HBD (B)	2.032	1.944	1.159	0.856	2.313	2.837	1.898	78.86%
BLK (B)	0.000	0.000	0.000	0.000	0.000	0.000	0.000	0.00%
CPL (B)	2.034	2.613	2.352	1.079	0.324	0.505	0.509	21.14%
Ord Price Type	Sell & Buy Orders Traded per Price Type							(%)
PPT (S)	0	0	0	0	0	0	0	0.00%
HBD (S)	274	398	389	241	399	262	196	100.00%
BLK (S)	0	0	0	0	0	0	0	0.00%
PPT (B)	0	0	0	0	0	0	0	0.00%
HBD (B)	571	409	404	405	430	634	632	100.00%
BLK (B)	0	0	0	0	0	0	0	0.00%

MCP Market Clearing Price (€/MWh)
PPT Priority Price-Taking
HBD Hybrid
BLK Block
CPL Market Coupling Flow

Trade's Volume Mix

	Sell - MWh	Buy - MWh	
Lignite (0.0%)	0	0	(0.0%)
Crete Conv. (0.0%)	0	0	(0.0%)
Gas (10.0%)	242	6	(0.2%)
Hydro (0.2%)	5	0	(0.0%)
Imports (70.3%)	1,693		
RES (15.2%)	367	1,012	(42.0%)
Crete RES (0.0%)	0	0	(0.0%)
BESS (0.0%)	0	0	(0.0%)
HV Load (0.0%)	1	39	(1.6%)
MV Load (3.3%)	79	64	(2.7%)
LV Load (0.9%)	21	776	(32.2%)
Crete Load (0.0%)	0	0	(0.0%)
Pumping (0.0%)	0	1	(0.0%)
Exports		509	(21.1%)
Sys.Losses (0.0%)	0	0	(0.0%)
D/R Load (0.0%)	0	0	(0.0%)

