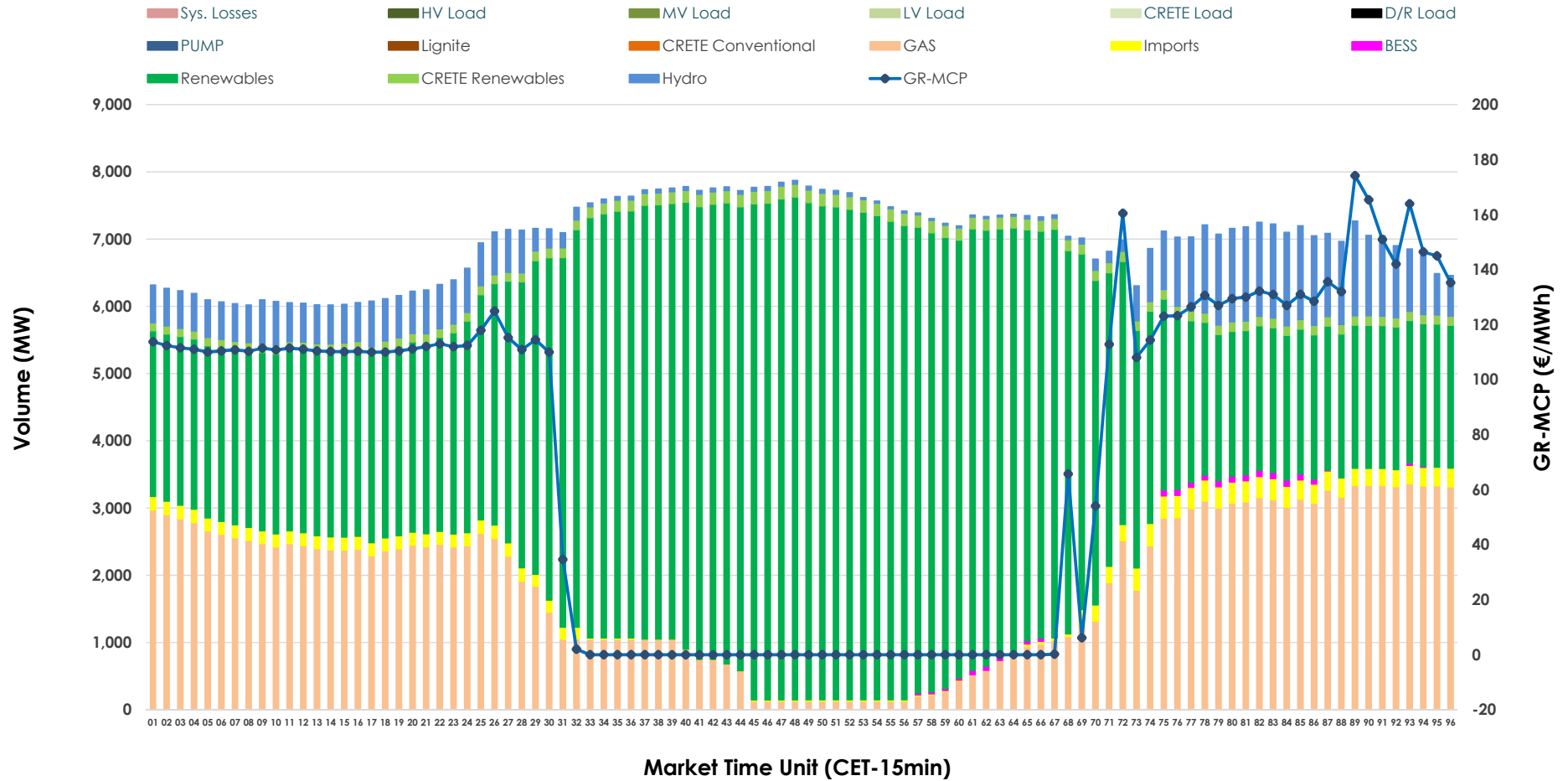


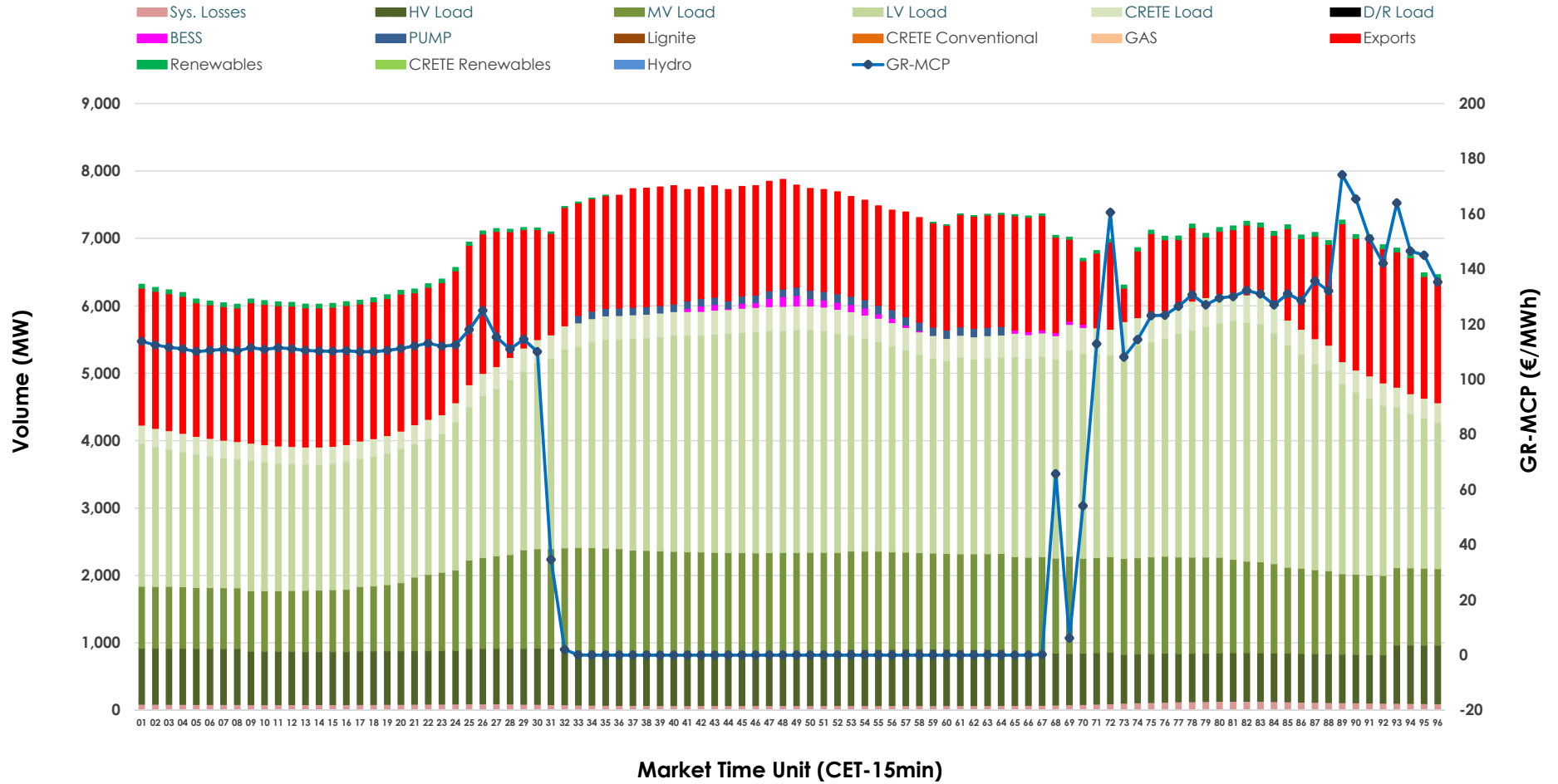


Day-Ahead Market Outlook

25.05.2026 Day-Ahead Market - Sell



25.05.2026 Day-Ahead Market - Buy



GR Bidding Zone Weekly Figures

Delivery Day	19.05	20.05	21.05	22.05	23.05	24.05	25.05
	↗ 30%	↘ -48%	↗ 35%	↗ 2%	↘ -22%	↘ -16%	↗ 22%
Avg.MCP (€/MWh)	129.48	67.26	90.99	92.38	71.90	60.30	73.44
Max.MCP (€/MWh)	233.28	209.51	227.11	167.36	185.46	169.90	174.16
Min.MCP (€/MWh)	75.00	-0.10	-0.01	0.00	-3.23	-6.00	-0.01
	↘ -3%	↗ 5%	↘ -2%	↘ -2%	↘ -9%	↘ -3%	↗ 18%
Tot.Vol(GWh)	320.85	336.14	330.85	323.31	294.58	286.12	336.26

Trades by Order Type

Delivery Day		19.05	20.05	21.05	22.05	23.05	24.05	25.05	
Ord Price Type		Sell & Buy Trades in (GWh) per Price Type							(%)
PPT	(S)	59.800	73.927	63.567	68.690	66.527	72.052	76.606	45.56%
HBD	(S)	71.266	68.471	73.459	68.593	61.509	53.769	70.070	41.68%
BLK	(S)	28.557	25.673	28.387	24.372	18.721	16.875	21.452	12.76%
CPL	(S)	0.803	0.000	0.012	0.000	0.534	0.365	0.000	0.00%
PPT	(B)	14.694	14.511	14.705	14.085	13.748	13.038	16.106	9.58%
HBD	(B)	124.344	126.040	125.382	123.619	115.047	109.432	124.416	74.00%
BLK	(B)	0.000	0.000	0.000	0.000	0.000	0.000	0.000	0.00%
CPL	(B)	21.389	27.520	25.339	23.951	18.496	20.590	27.606	16.42%
		Sell & Buy Orders Traded per Price Type							(%)
PPT	(S)	1646	1694	1687	1803	1757	1768	1693	36.17%
HBD	(S)	3835	3156	3352	3411	3034	2653	2977	63.60%
BLK	(S)	8	8	9	9	12	9	11	0.23%
PPT	(B)	2417	2307	2317	2289	2306	2327	2358	38.93%
HBD	(B)	3805	3990	3855	3934	3851	3799	3699	61.07%
BLK	(B)	0	0	0	0	0	0	0	0.00%

- MCP** Market Clearing Price (€/MWh)
- PPT** Priority Price-Taking
- HBD** Hybrid
- BLK** Block
- CPL** Market Coupling Flow

Trade's Volume Mix

		Sell - MWh	Buy - MWh	
Lignite	(0.0%)	0	0	(0.0%)
Crete Conv.	(0.0%)	0	0	(0.0%)
Gas	(26.2%)	44,043	0	(0.0%)
Hydro	(7.1%)	11,879	0	(0.0%)
Imports	(2.2%)	3,704		
RES	(62.2%)	104,494	768	(0.5%)
Crete RES	(2.2%)	3,625	0	(0.0%)
BESS	(0.2%)	382	452	(0.3%)
HV Load	(0.0%)	0	19,028	(11.3%)
MV Load	(0.0%)	0	30,923	(18.4%)
LV Load	(0.0%)	0	66,109	(39.3%)
Crete Load	(0.0%)	0	8,024	(4.8%)
Pumping	(0.0%)	0	940	(0.6%)
Exports			39,734	(23.6%)
Sys.Losses	(0.0%)	0	2,148	(1.3%)
D/R Load	(0.0%)	0	0	(0.0%)

