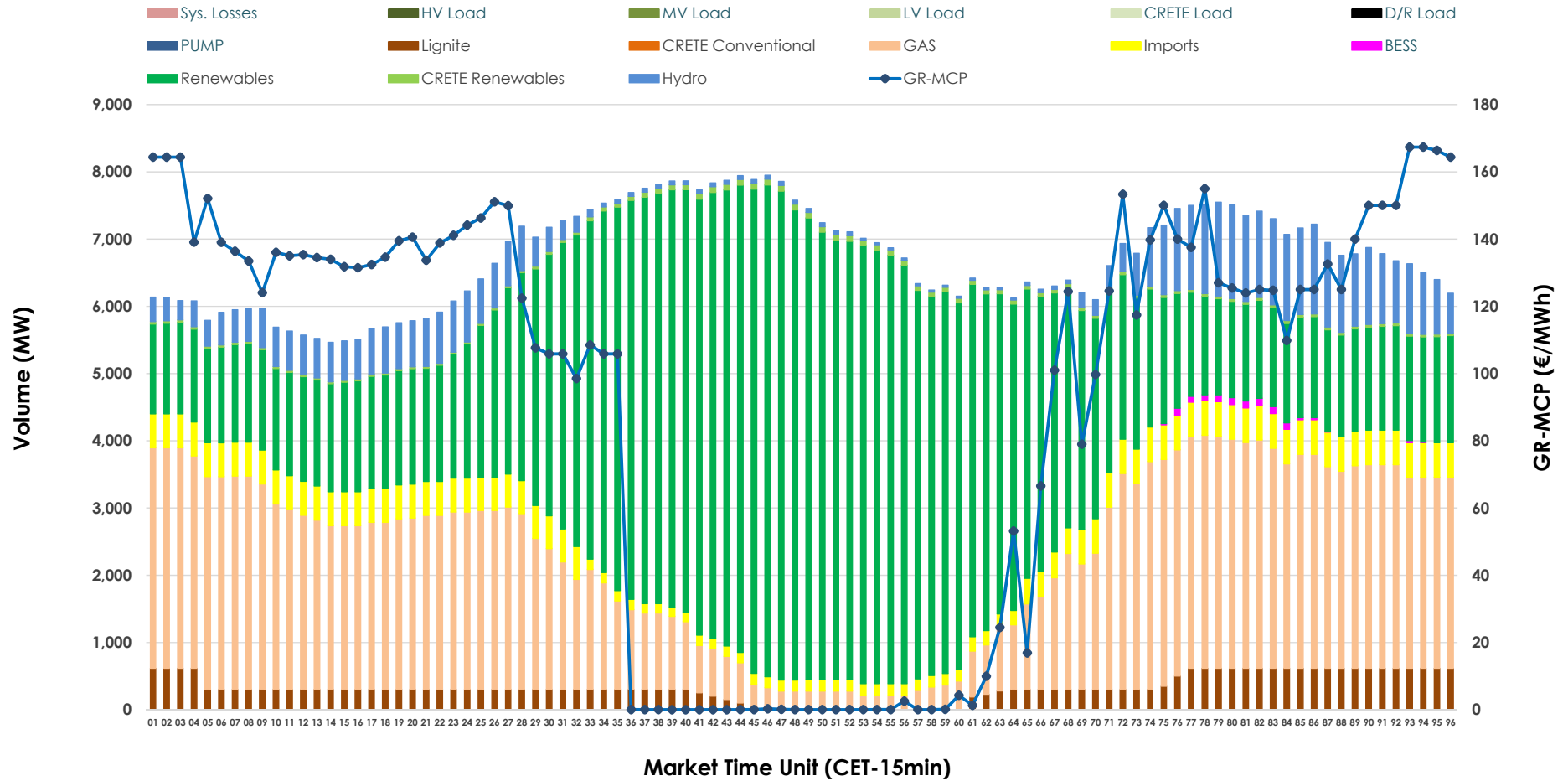


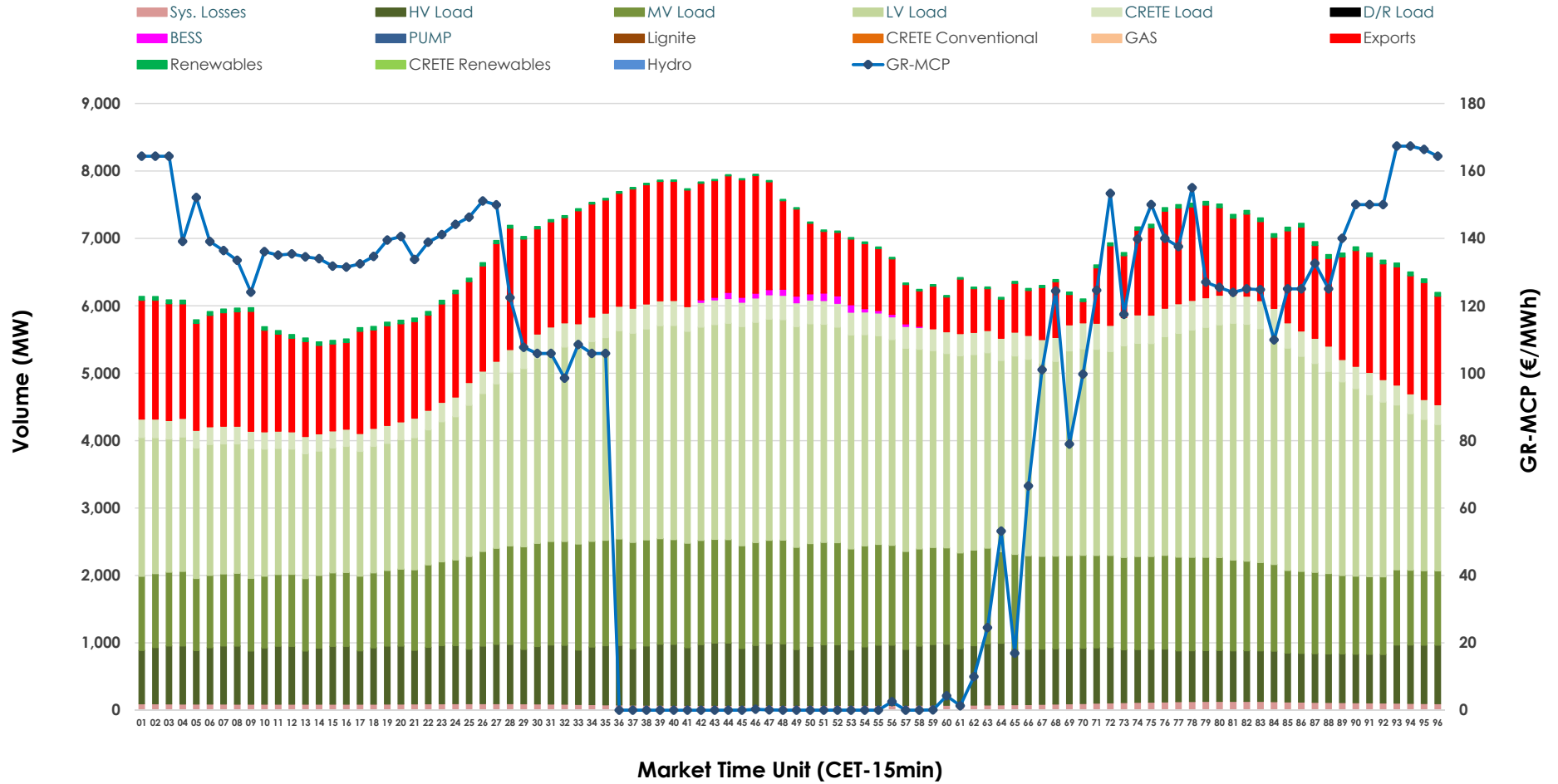


Day-Ahead Market Outlook

22.05.2026 Day-Ahead Market - Sell



22.05.2026 Day-Ahead Market - Buy



GR Bidding Zone Weekly Figures

Delivery Day	16.05	17.05	18.05	19.05	20.05	21.05	22.05
	👇 -15%	👇 -4%	👆 32%	👆 30%	👇 -48%	👆 35%	👆 2%
Avg.MCP (€/MWh)	78.36	75.20	99.62	129.48	67.26	90.99	92.38
Max.MCP (€/MWh)	136.89	168.83	257.62	233.28	209.51	227.11	167.36
Min.MCP (€/MWh)	0.02	-1.01	0.00	75.00	-0.10	-0.01	0.00
	👇 -10%	👆 1%	👆 8%	👇 -3%	👆 5%	👇 -2%	👇 -2%
Tot.Vol(GWh)	303.35	306.87	331.83	320.85	336.14	330.85	323.31

Trades by Order Type

Delivery Day		16.05	17.05	18.05	19.05	20.05	21.05	22.05	
Ord Price Type		Sell & Buy Trades in (GWh) per Price Type							(%)
PPT	(S)	63.469	71.721	64.313	59.800	73.927	63.567	68.690	42.49%
HBD	(S)	66.338	64.208	71.127	71.266	68.471	73.459	68.593	42.43%
BLK	(S)	21.857	17.507	30.478	28.557	25.673	28.387	24.372	15.08%
CPL	(S)	0.013	0.000	0.000	0.803	0.000	0.012	0.000	0.00%
PPT	(B)	14.299	13.770	14.491	14.694	14.511	14.705	14.085	8.71%
HBD	(B)	121.066	111.681	121.731	124.344	126.040	125.382	123.619	76.47%
BLK	(B)	0.000	0.000	0.000	0.000	0.000	0.000	0.000	0.00%
CPL	(B)	16.311	27.985	29.695	21.389	27.520	25.339	23.951	14.82%
		Sell & Buy Orders Traded per Price Type							(%)
PPT	(S)	1725	1722	1768	1646	1694	1687	1803	34.52%
HBD	(S)	3475	2870	3267	3835	3156	3352	3411	65.31%
BLK	(S)	8	11	10	8	8	9	9	0.17%
PPT	(B)	2402	2387	2317	2417	2307	2317	2289	36.78%
HBD	(B)	3969	3918	3696	3805	3990	3855	3934	63.22%
BLK	(B)	0	0	0	0	0	0	0	0.00%

- MCP** Market Clearing Price (€/MWh)
- PPT** Priority Price-Taking
- HBD** Hybrid
- BLK** Block
- CPL** Market Coupling Flow

Trade's Volume Mix

		Sell - MWh	Buy - MWh	
Lignite	(4.8%)	7,821	0	(0.0%)
Crete Conv.	(0.0%)	0	0	(0.0%)
Gas	(30.7%)	49,588	0	(0.0%)
Hydro	(7.3%)	11,846	0	(0.0%)
Imports	(5.8%)	9,336		
RES	(50.5%)	81,622	953	(0.6%)
Crete RES	(0.7%)	1,184	0	(0.0%)
BESS	(0.2%)	258	295	(0.2%)
HV Load	(0.0%)	0	20,000	(12.4%)
MV Load	(0.0%)	0	32,026	(19.8%)
LV Load	(0.0%)	0	65,694	(40.6%)
Crete Load	(0.0%)	0	8,120	(5.0%)
Pumping	(0.0%)	0	0	(0.0%)
Exports			32,320	(20.0%)
Sys.Losses	(0.0%)	0	2,247	(1.4%)
D/R Load	(0.0%)	0	0	(0.0%)

