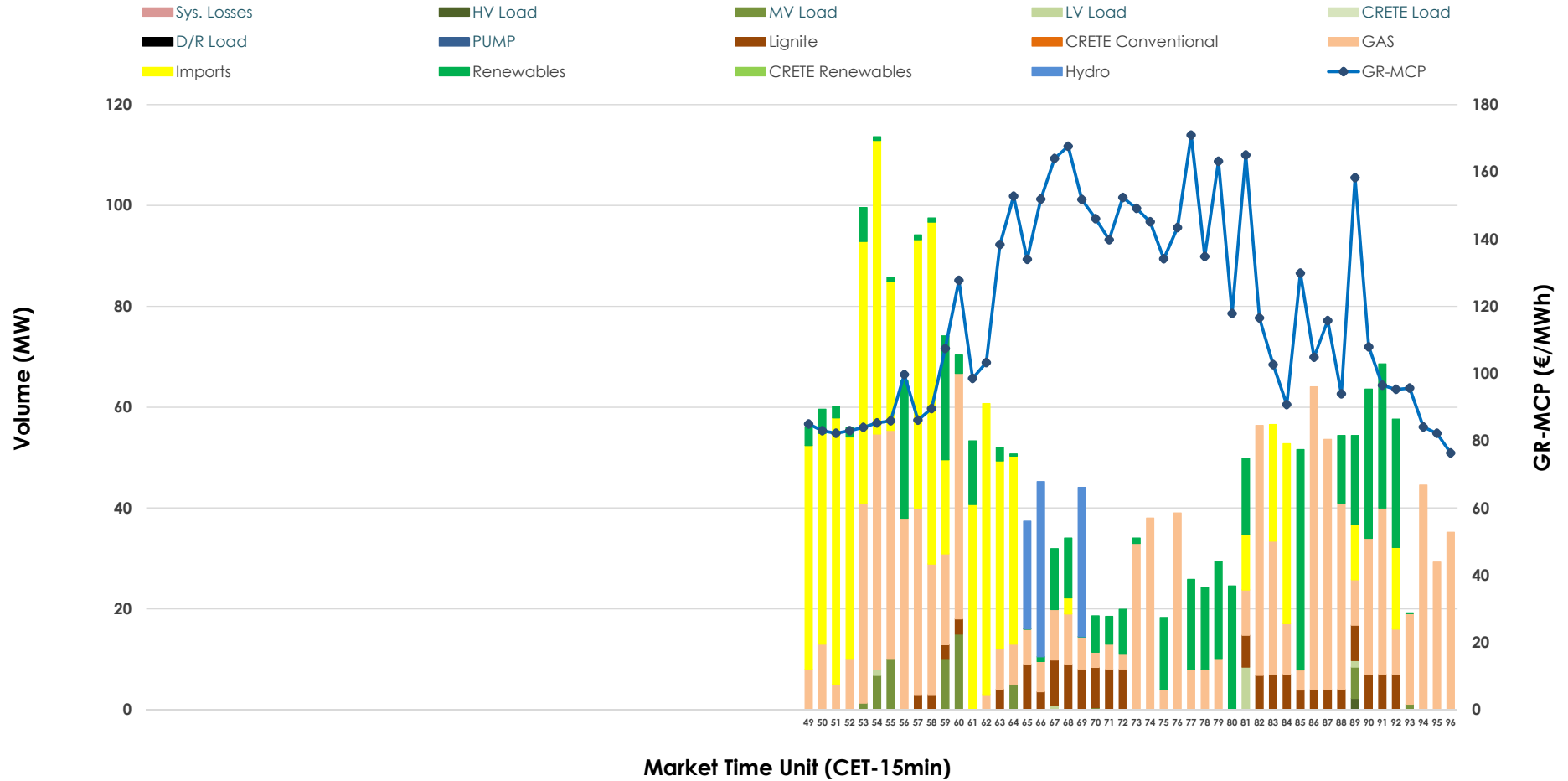


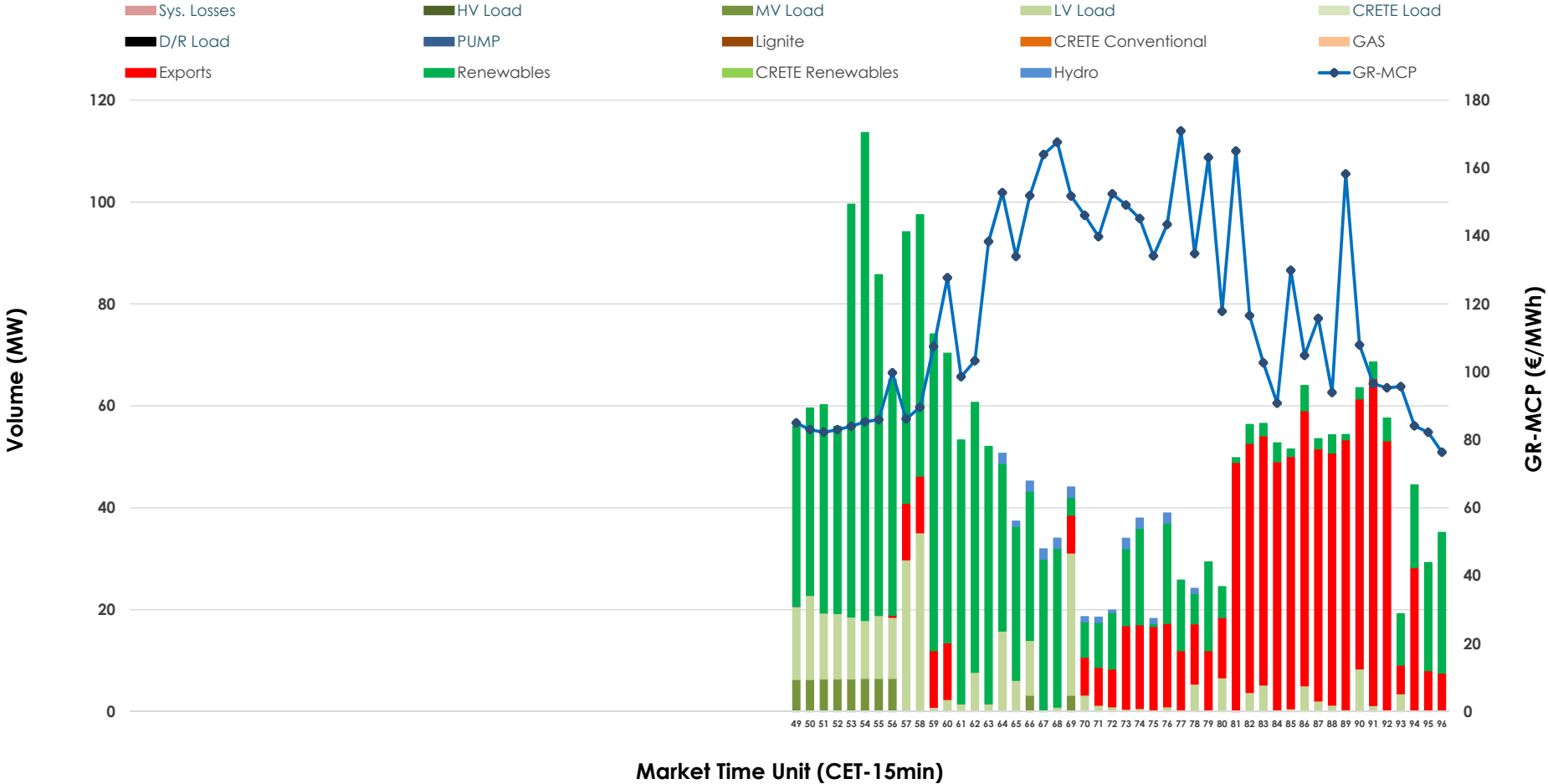


# IDA '3' Market Outlook

29.12.2025 IDA '3' Market - Sell



### 29.12.2025 IDA '3' Market - Buy



### GR Bidding Zone Weekly Figures

Delivery Day	23.12	24.12	25.12	26.12	27.12	28.12	29.12
	→ 0%	↘ -31%	↗ 8%	↗ 4%	↘ -10%	↘ -6%	↗ 30%
<b>Avg.MCP (€/MWh)</b>	139.29	95.98	103.44	107.76	97.17	90.92	118.21
<b>Max.MCP (€/MWh)</b>	224.24	162.40	120.06	124.35	137.20	125.61	170.91
<b>Min.MCP (€/MWh)</b>	57.54	51.36	84.94	86.95	25.00	14.61	76.36
	↘ -18%	↗ 127%	↗ 18%	↗ 44%	↘ -56%	↗ 48%	↘ -51%
<b>Tot.Vol(GWh)</b>	0.98	2.24	2.64	3.81	1.68	2.50	1.22

### Trades by Order Type

Delivery Day		23.12	24.12	25.12	26.12	27.12	28.12	29.12	
Ord Price Type		Sell & Buy Trades in (GWh) per Price Type							(%)
<b>PPT</b>	(S)	0.000	0.000	0.000	0.000	0.000	0.000	0.000	0.00%
<b>HBD</b>	(S)	0.426	1.058	1.121	1.364	0.658	1.209	0.427	69.88%
<b>BLK</b>	(S)	0.000	0.000	0.000	0.000	0.000	0.000	0.000	0.00%
<b>CPL</b>	(S)	0.066	0.061	0.201	0.541	0.182	0.038	0.184	30.12%
<b>PPT</b>	(B)	0.000	0.000	0.000	0.000	0.000	0.000	0.000	0.00%
<b>HBD</b>	(B)	0.300	0.294	0.421	0.353	0.596	0.201	0.396	64.91%
<b>BLK</b>	(B)	0.000	0.000	0.000	0.000	0.000	0.000	0.000	0.00%
<b>CPL</b>	(B)	0.192	0.825	0.902	1.552	0.245	1.047	0.214	35.09%
		Sell & Buy Orders Traded per Price Type							(%)
<b>PPT</b>	(S)	0	0	0	0	0	0	0	0.00%
<b>HBD</b>	(S)	54	215	211	246	268	218	139	100.00%
<b>BLK</b>	(S)	0	0	0	0	0	0	0	0.00%
<b>PPT</b>	(B)	0	0	0	0	0	0	0	0.00%
<b>HBD</b>	(B)	240	120	132	84	150	143	215	100.00%
<b>BLK</b>	(B)	0	0	0	0	0	0	0	0.00%

**MCP** Market Clearing Price (€/MWh)  
**PPT** Priority Price-Taking  
**HBD** Hybrid  
**BLK** Block  
**CPL** Market Coupling Flow

### Trade's Volume Mix

	Sell - MWh	Buy - MWh	
<b>Lignite</b> (6.1%)	37	0	(0.0%)
<b>Crete Conv.</b> (0.0%)	0	0	(0.0%)
<b>Gas</b> (40.7%)	249	0	(0.0%)
<b>Hydro</b> (3.5%)	21	5	(0.9%)
<b>Imports</b> (30.1%)	184		
<b>RES</b> (16.6%)	102	302	(49.5%)
<b>Crete RES</b> (0.0%)	0	0	(0.0%)
<b>HV Load</b> (0.1%)	1	0	(0.0%)
<b>MV Load</b> (2.3%)	14	14	(2.4%)
<b>LV Load</b> (0.5%)	3	74	(12.2%)
<b>Crete Load</b> (0.0%)	0	0	(0.0%)
<b>Pumping</b> (0.0%)	0	0	(0.0%)
<b>Exports</b>		214	(35.1%)
<b>Sys.Losses</b> (0.0%)	0	0	(0.0%)
<b>D/R Load</b> (0.0%)	0	0	(0.0%)

