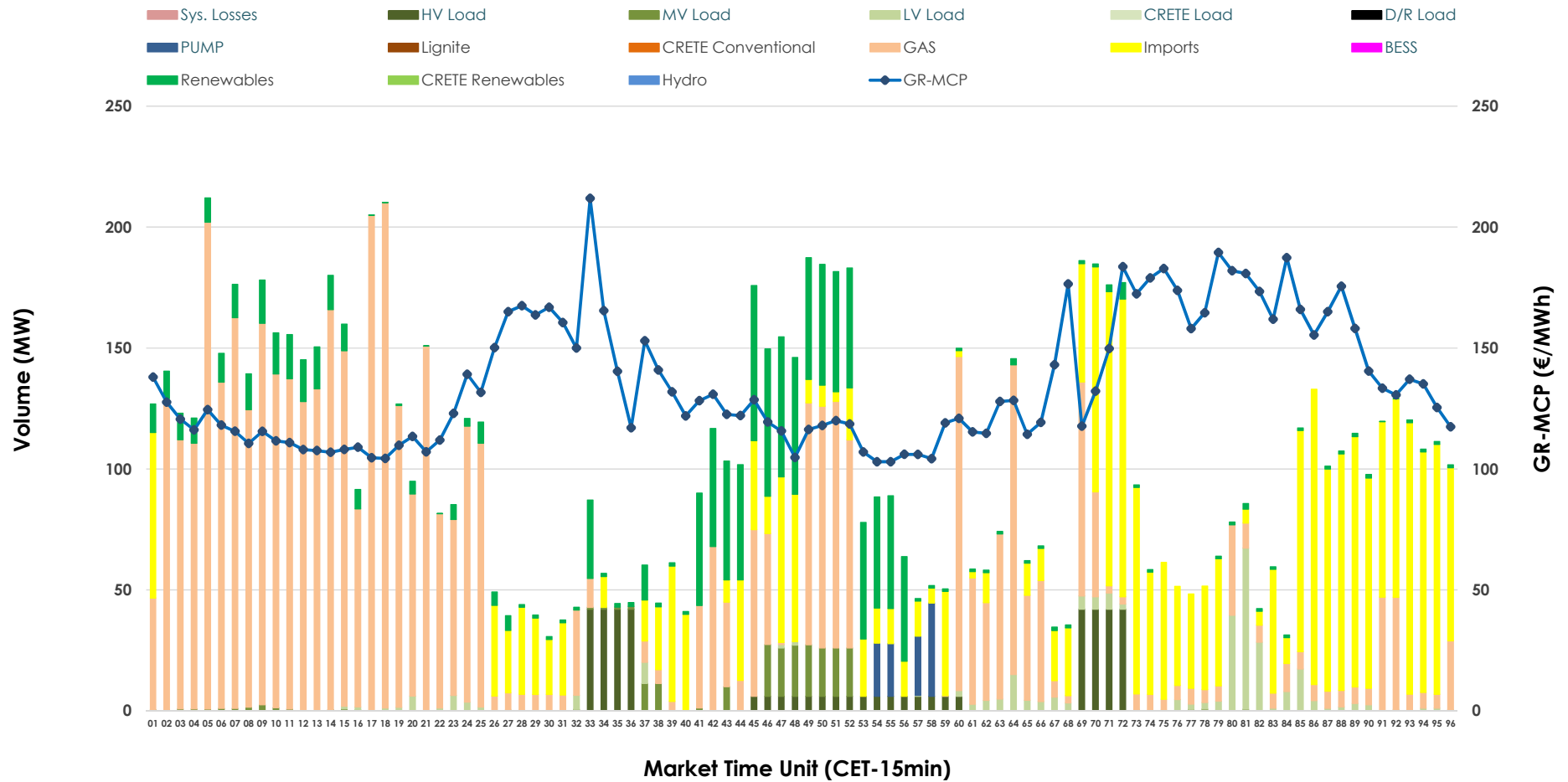


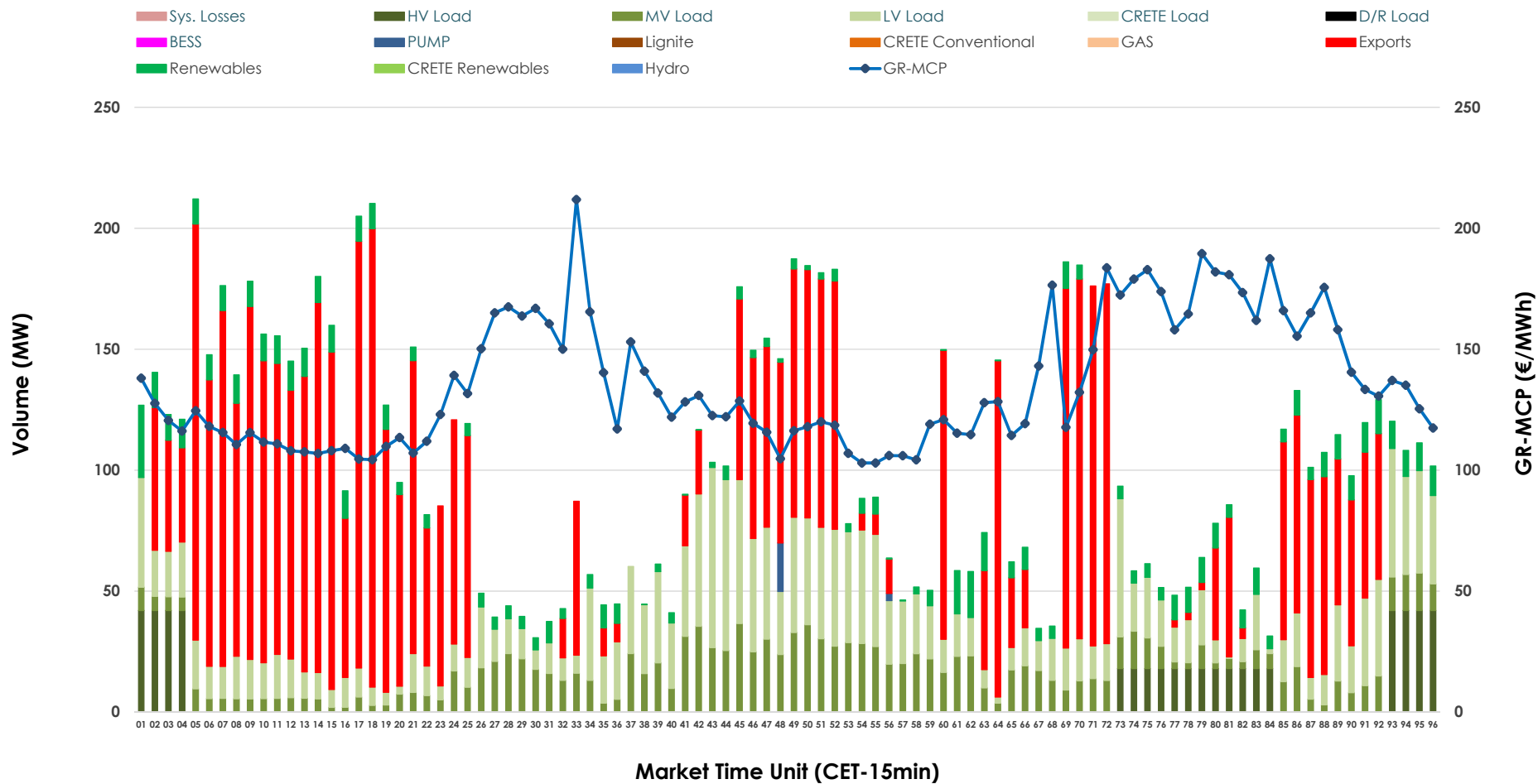


IDA '1' Market Outlook

02.04.2026 IDA '1' Market - Sell



02.04.2026 IDA '1' Market - Buy



GR Bidding Zone Weekly Figures

Delivery Day	27.03	28.03	29.03	30.03	31.03	01.04	02.04
	↗ 14%	↘ -9%	↘ -16%	↗ 66%	↗ 11%	↗ 17%	↘ -13%
Avg.MCP (€/MWh)	93.92	85.15	71.83	119.14	132.20	154.80	135.24
Max.MCP (€/MWh)	158.93	168.64	149.89	225.95	225.72	247.00	211.87
Min.MCP (€/MWh)	-2.58	6.75	-14.99	4.21	91.35	117.05	103.00
	↘ -14%	↘ -8%	↘ -9%	↗ 6%	↗ 59%	↗ 55%	↘ -39%
Tot.Vol(GWh)	3.77	3.48	3.15	3.36	5.35	8.30	5.03

Trades by Order Type

Delivery Day		27.03	28.03	29.03	30.03	31.03	01.04	02.04	
Ord Price Type		Sell & Buy Trades in (GWh) per Price Type							(%)
PPT	(S)	0.000	0.000	0.000	0.000	0.000	0.000	0.000	0.00%
HBD	(S)	1.303	1.243	1.282	1.302	2.355	2.648	1.798	71.50%
BLK	(S)	0.000	0.000	0.000	0.000	0.000	0.000	0.000	0.00%
CPL	(S)	0.584	0.494	0.296	0.377	0.319	1.504	0.717	28.50%
PPT	(B)	0.000	0.000	0.000	0.000	0.000	0.000	0.000	0.00%
HBD	(B)	1.722	1.233	1.228	1.400	2.175	2.116	1.223	48.62%
BLK	(B)	0.000	0.000	0.000	0.000	0.000	0.000	0.000	0.00%
CPL	(B)	0.165	0.505	0.349	0.280	0.499	2.035	1.292	51.38%
		Sell & Buy Orders Traded per Price Type							(%)
PPT	(S)	0	0	0	0	0	0	0	0.00%
HBD	(S)	261	290	326	176	376	368	277	100.00%
BLK	(S)	0	0	0	0	0	0	0	0.00%
PPT	(B)	0	0	0	0	0	0	0	0.00%
HBD	(B)	860	694	812	860	719	673	831	100.00%
BLK	(B)	0	0	0	0	0	0	0	0.00%

- MCP** Market Clearing Price (€/MWh)
- PPT** Priority Price-Taking
- HBD** Hybrid
- BLK** Block
- CPL** Market Coupling Flow

Trade's Volume Mix

		Sell - MWh	Buy - MWh	
Lignite	(0.0%)	0	0	(0.0%)
Crete Conv.	(0.0%)	0	0	(0.0%)
Gas	(49.6%)	1,246	0	(0.0%)
Hydro	(0.0%)	0	0	(0.0%)
Imports	(28.5%)	717		
RES	(11.7%)	293	172	(6.9%)
Crete RES	(0.0%)	0	0	(0.0%)
BESS	(0.0%)	0	0	(0.0%)
HV Load	(4.3%)	108	138	(5.5%)
MV Load	(2.0%)	49	338	(13.5%)
LV Load	(3.0%)	75	568	(22.6%)
Crete Load	(0.0%)	0	0	(0.0%)
Pumping	(1.1%)	27	6	(0.2%)
Exports			1,292	(51.4%)
Sys.Losses	(0.0%)	0	0	(0.0%)
D/R Load	(0.0%)	0	0	(0.0%)

