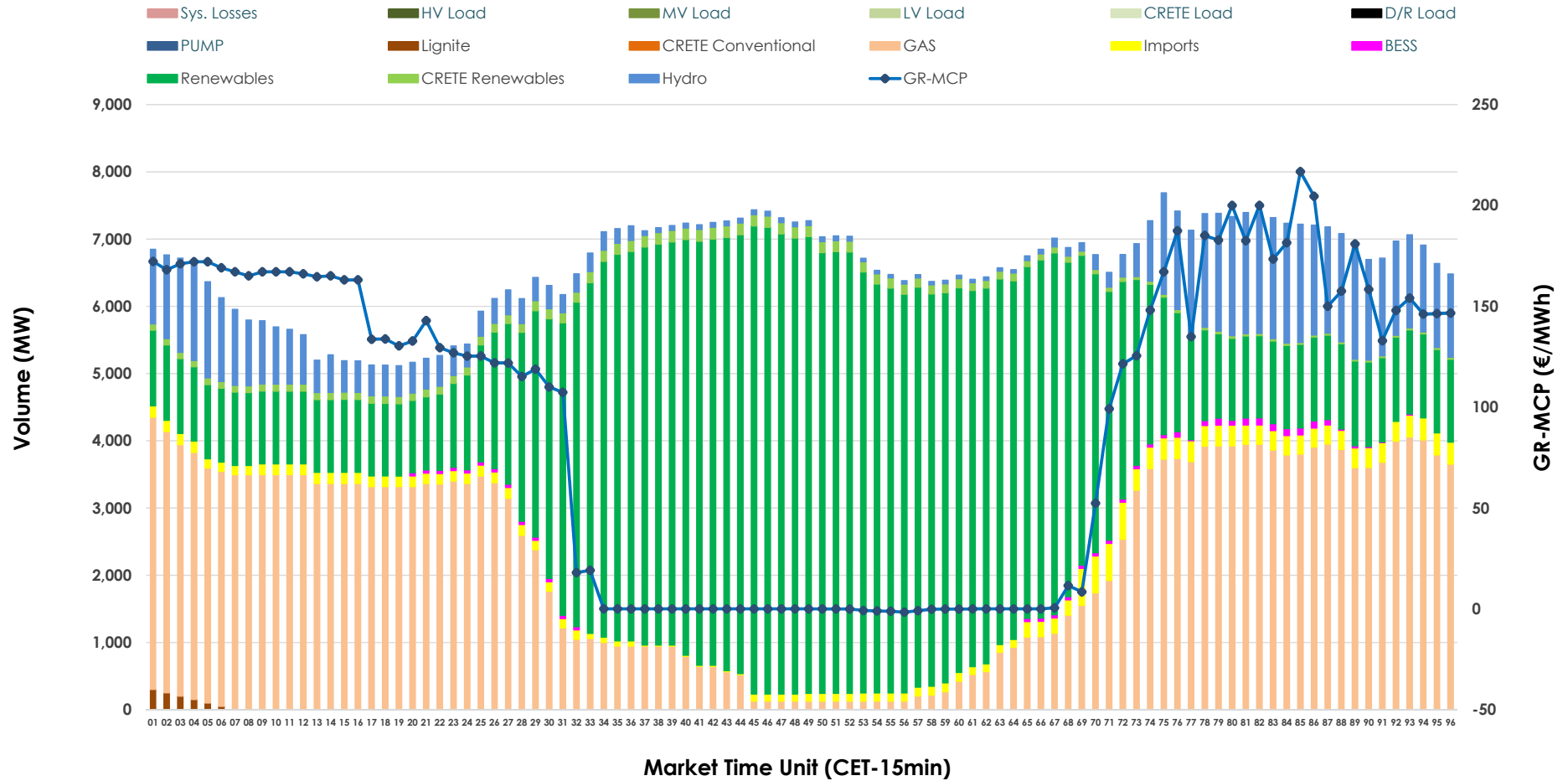


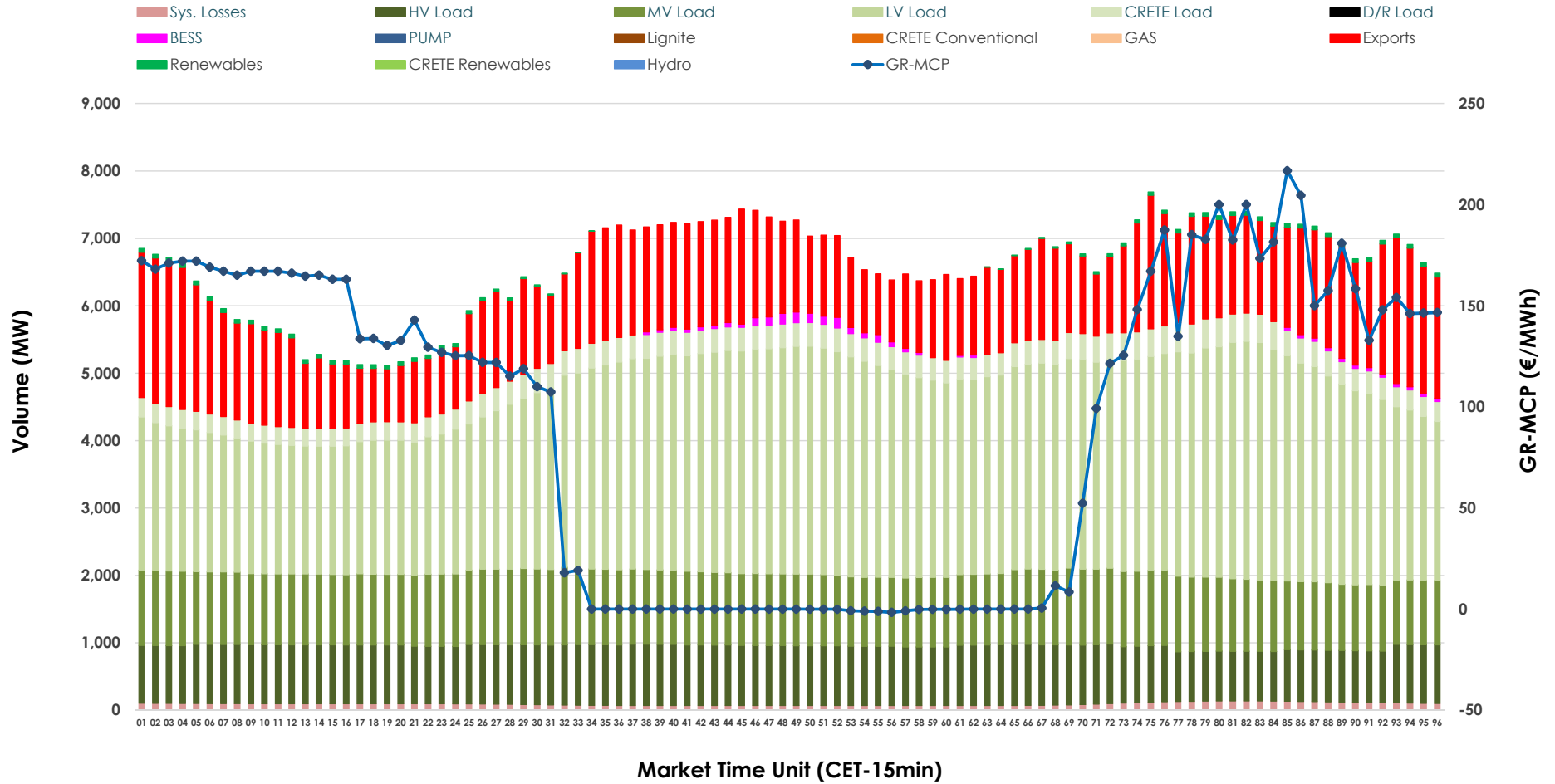


Day-Ahead Market Outlook

30.05.2026 Day-Ahead Market - Sell



30.05.2026 Day-Ahead Market - Buy



GR Bidding Zone Weekly Figures

Delivery Day	24.05	25.05	26.05	27.05	28.05	29.05	30.05
	👇 -16%	👆 22%	👆 15%	👆 13%	👇 -7%	👇 -7%	👆 11%
Avg.MCP (€/MWh)	60.30	73.44	84.59	95.98	89.64	83.77	92.62
Max.MCP (€/MWh)	169.90	174.16	214.80	277.76	199.16	173.41	216.79
Min.MCP (€/MWh)	-6.00	-0.01	-0.01	-0.01	0.00	-0.01	-1.64
	👇 -3%	👆 18%	👆 7%	👆 -1%	👇 -2%	👆 4%	👇 -13%
Tot.Vol(GWh)	286.12	336.26	358.48	355.94	348.78	363.45	316.75

Trades by Order Type

Delivery Day		24.05	25.05	26.05	27.05	28.05	29.05	30.05	
Ord Price Type		Sell & Buy Trades in (GWh) per Price Type							(%)
PPT	(S)	72.052	76.606	78.984	68.767	62.856	71.215	67.224	42.45%
HBD	(S)	53.769	70.070	75.012	77.269	78.987	80.425	65.767	41.53%
BLK	(S)	16.875	21.452	25.245	31.936	32.486	30.087	25.384	16.03%
CPL	(S)	0.365	0.000	0.000	0.000	0.063	0.000	0.000	0.00%
PPT	(B)	13.038	16.106	15.384	15.153	15.640	15.607	15.170	9.58%
HBD	(B)	109.432	124.416	132.398	133.694	135.255	136.644	122.362	77.26%
BLK	(B)	0.000	0.000	0.000	0.000	0.000	0.000	0.000	0.00%
CPL	(B)	20.590	27.606	31.459	29.124	23.497	29.476	20.843	13.16%
		Sell & Buy Orders Traded per Price Type							(%)
PPT	(S)	1768	1693	1809	1828	1843	1765	1835	35.91%
HBD	(S)	2653	2977	3138	3360	3490	3295	3258	63.76%
BLK	(S)	9	11	12	13	13	13	17	0.33%
PPT	(B)	2327	2358	2362	2344	2370	2354	2346	37.07%
HBD	(B)	3799	3699	4095	4069	3997	4076	3982	62.93%
BLK	(B)	0	0	0	0	0	0	0	0.00%

MCP Market Clearing Price (€/MWh)
PPT Priority Price-Taking
HBD Hybrid
BLK Block
CPL Market Coupling Flow

Trade's Volume Mix

		Sell - MWh		Buy - MWh	
Lignite	(0.2%)	264	0	0	(0.0%)
Crete Conv.	(0.0%)	0	0	0	(0.0%)
Gas	(35.0%)	55,437	0	0	(0.0%)
Hydro	(9.7%)	15,427	0	0	(0.0%)
Imports	(2.9%)	4,548	0	0	(0.0%)
RES	(50.3%)	79,604	742	742	(0.5%)
Crete RES	(1.6%)	2,521	0	0	(0.0%)
BESS	(0.4%)	573	608	608	(0.4%)
HV Load	(0.0%)	0	20,599	20,599	(13.0%)
MV Load	(0.0%)	0	25,684	25,684	(16.2%)
LV Load	(0.0%)	0	66,903	66,903	(42.2%)
Crete Load	(0.0%)	0	8,144	8,144	(5.1%)
Pumping	(0.0%)	0	0	0	(0.0%)
Exports		0	33,476	33,476	(21.1%)
Sys.Losses	(0.0%)	0	2,219	2,219	(1.4%)
D/R Load	(0.0%)	0	0	0	(0.0%)

