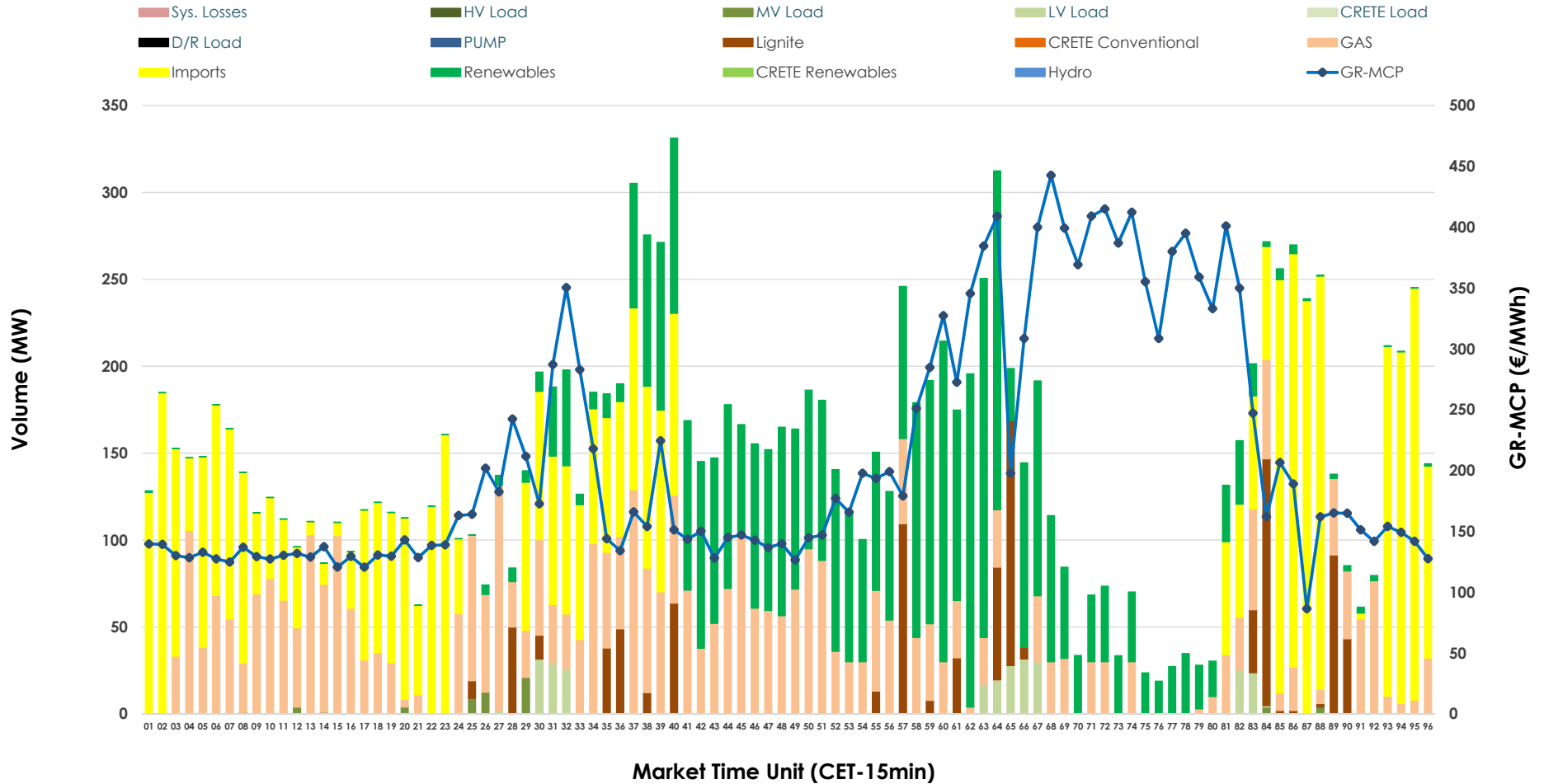


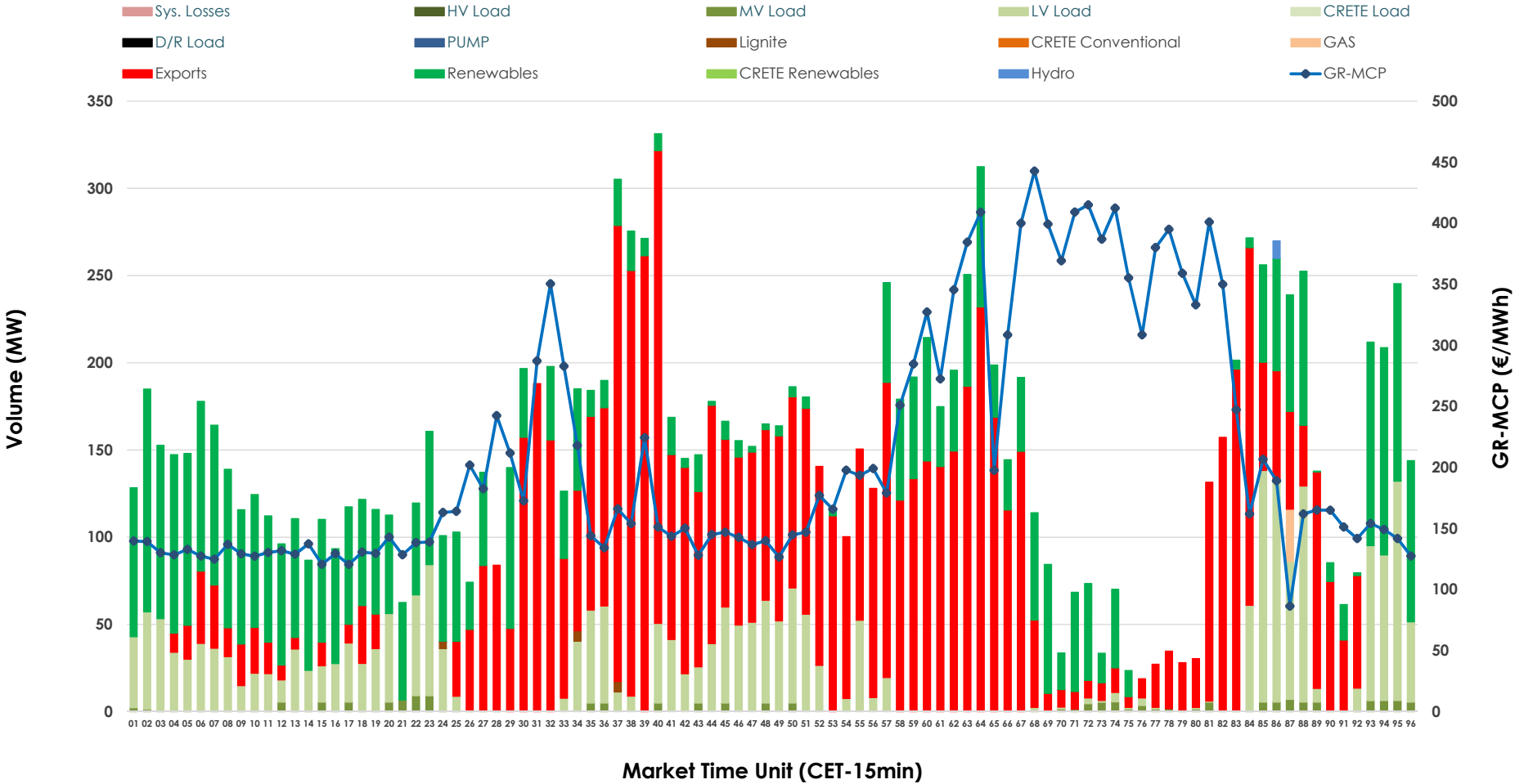


IDA '2' Market Outlook

22.01.2026 IDA '2' Market - Sell



22.01.2026 IDA '2' Market - Buy



GR Bidding Zone Weekly Figures

Delivery Day	16.01	17.01	18.01	19.01	20.01	21.01	22.01
	↗ 1%	↘ -27%	↗ 11%	→ 0%	↗ 6%	↗ 35%	↗ 43%
Avg.MCP (€/MWh)	127.22	93.22	103.47	103.43	109.22	147.63	211.29
Max.MCP (€/MWh)	208.82	146.74	158.25	171.33	193.60	222.31	442.65
Min.MCP (€/MWh)	73.02	66.72	75.84	61.84	73.22	106.92	86.37
	↗ 25%		↘ -41%	↗ 78%	↗ 35%	↗ 47%	
Tot.Vol(GWh)	4.19	N/M	3.46	2.04	3.63	4.88	7.17

Trades by Order Type

Delivery Day	16.01	17.01	18.01	19.01	20.01	21.01	22.01	
Ord Price Type	Sell & Buy Trades in (GWh) per Price Type							(%)
PPT (S)	0.000	0.000	0.000	0.000	0.000	0.000	0.000	0.00%
HBD (S)	0.802	0.000	1.111	0.873	1.781	1.698	2.350	65.59%
BLK (S)	0.000	0.000	0.000	0.000	0.000	0.000	0.000	0.00%
CPL (S)	1.292	0.000	0.616	0.148	0.032	0.743	1.233	34.41%
PPT (B)	0.000	0.000	0.000	0.000	0.000	0.000	0.000	0.00%
HBD (B)	0.851	0.000	1.725	0.963	1.079	1.246	1.738	48.51%
BLK (B)	0.000	0.000	0.000	0.000	0.000	0.000	0.000	0.00%
CPL (B)	1.243	0.000	0.003	0.058	0.734	1.196	1.844	51.49%
	Sell & Buy Orders Traded per Price Type							(%)
PPT (S)	0	0	0	0	0	0	0	0.00%
HBD (S)	291	0	248	251	345	277	465	100.00%
BLK (S)	0	0	0	0	0	0	0	0.00%
PPT (B)	0	0	0	0	0	0	0	0.00%
HBD (B)	478	0	312	424	318	292	292	100.00%
BLK (B)	0	0	0	0	0	0	0	0.00%

MCP Market Clearing Price (€/MWh)
PPT Priority Price-Taking
HBD Hybrid
BLK Block
CPL Market Coupling Flow

Trade's Volume Mix

	Sell - MWh	Buy - MWh	
Lignite (6.5%)	233	4	(0.1%)
Crete Conv. (0.0%)	0	0	(0.0%)
Gas (28.3%)	1,014	8	(0.2%)
Hydro (0.0%)	0	3	(0.1%)
Imports (34.4%)	1,233		
RES (28.5%)	1,021	1,033	(28.8%)
Crete RES (0.0%)	0	0	(0.0%)
HV Load (0.0%)	0	0	(0.0%)
MV Load (0.4%)	15	47	(1.3%)
LV Load (1.9%)	67	644	(18.0%)
Crete Load (0.0%)	0	0	(0.0%)
Pumping (0.0%)	0	0	(0.0%)
Exports		1,844	(51.5%)
Sys.Losses (0.0%)	0	0	(0.0%)
D/R Load (0.0%)	0	0	(0.0%)

