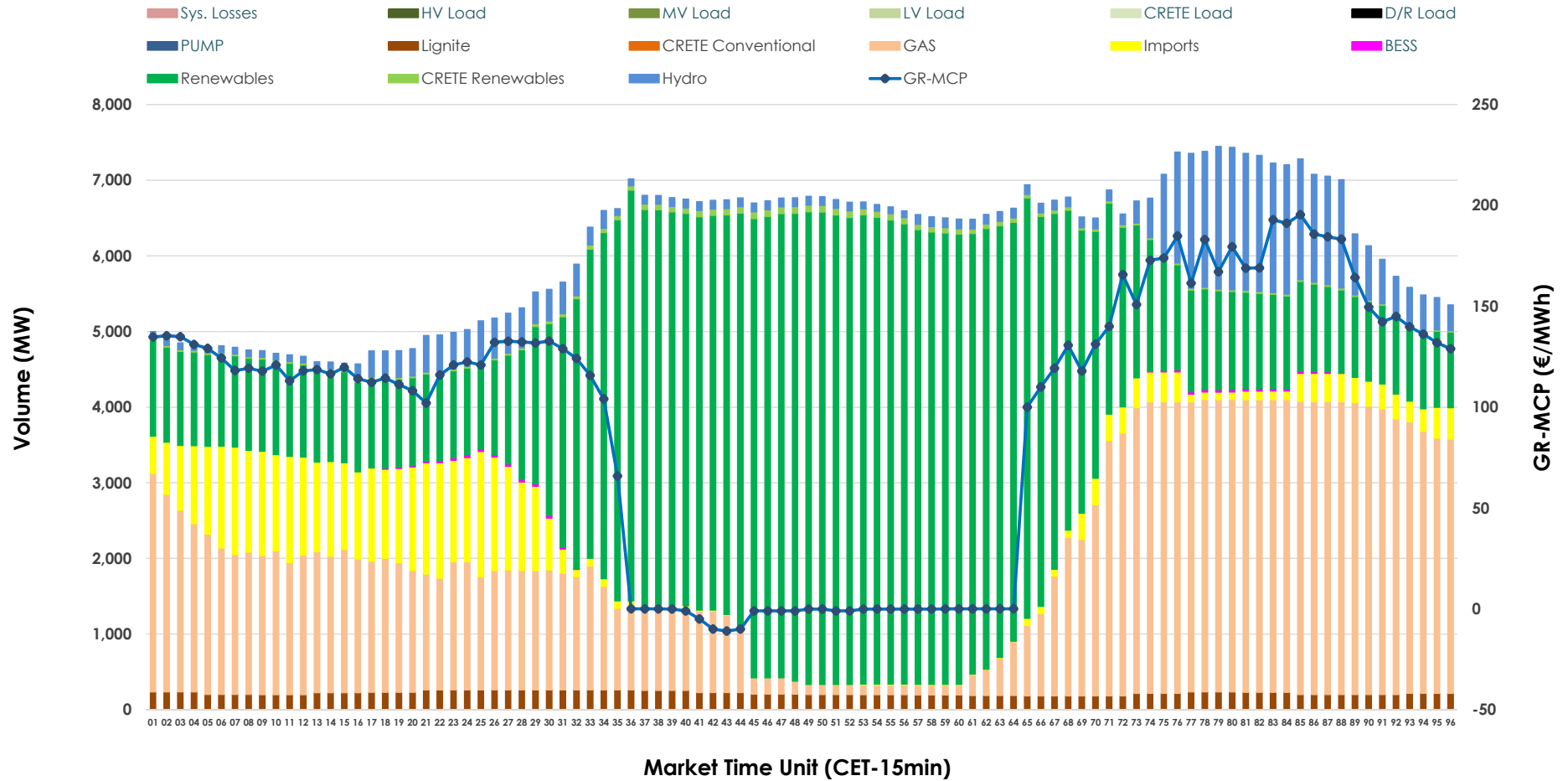


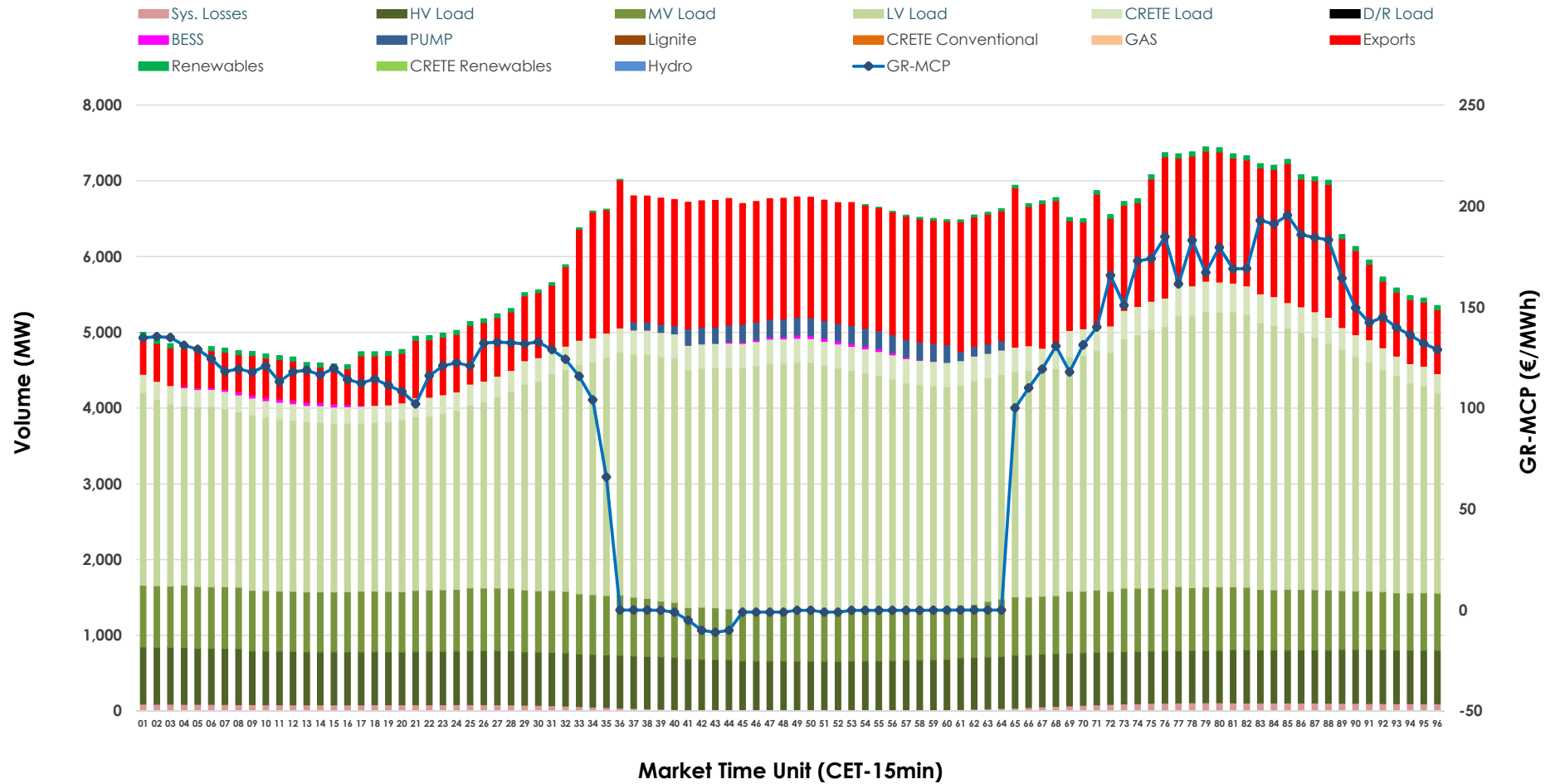


# Day-Ahead Market Outlook

10.04.2026 Day-Ahead Market - Sell



### 10.04.2026 Day-Ahead Market - Buy



### GR Bidding Zone Weekly Figures

Delivery Day	04.04	05.04	06.04	07.04	08.04	09.04	10.04
	↓ -46%	↓ -56%	↑ 126%	↔ 21%	↓ -6%	↔ 17%	↔ 1%
<b>Avg.MCP (€/MWh)</b>	70.29	31.16	70.35	85.32	80.41	94.31	95.30
<b>Max.MCP (€/MWh)</b>	187.56	141.02	185.89	204.50	188.91	186.55	195.45
<b>Min.MCP (€/MWh)</b>	0.00	-50.00	-25.02	-5.30	-10.00	-0.20	-11.00
	↘ -8%	↘ -8%	↗ 9%	↗ 8%	↘ -3%	↔ 0%	↘ -5%
<b>Tot.Vol(GWh)</b>	292.69	269.89	294.16	316.70	308.22	307.58	293.32

### Trades by Order Type

Delivery Day		04.04	05.04	06.04	07.04	08.04	09.04	10.04	
<b>Ord Price Type</b>		<b>Sell &amp; Buy Trades in (GWh) per Price Type</b>							<b>(%)</b>
<b>PPT</b>	(S)	54.159	67.826	55.691	50.282	57.974	46.078	45.843	31.26%
<b>HBD</b>	(S)	61.632	50.179	52.265	65.823	65.356	66.565	63.588	43.36%
<b>BLK</b>	(S)	15.314	9.239	12.305	26.897	23.861	29.612	27.799	18.95%
<b>CPL</b>	(S)	15.240	7.703	26.818	15.351	6.920	11.536	9.432	6.43%
<b>PPT</b>	(B)	13.285	12.273	13.969	14.822	14.696	14.403	14.353	9.79%
<b>HBD</b>	(B)	128.816	118.500	131.370	133.078	129.253	128.131	117.012	79.78%
<b>BLK</b>	(B)	0.000	0.000	0.000	0.000	0.000	0.000	0.000	0.00%
<b>CPL</b>	(B)	4.244	4.173	1.739	10.452	10.162	11.257	15.297	10.43%
		<b>Sell &amp; Buy Orders Traded per Price Type</b>							<b>(%)</b>
<b>PPT</b>	(S)	1606	1579	1525	1462	1471	1484	1489	34.47%
<b>HBD</b>	(S)	2729	1986	2384	2864	2687	3007	2818	65.23%
<b>BLK</b>	(S)	6	8	9	12	10	14	13	0.30%
<b>PPT</b>	(B)	2222	2234	2307	2350	2364	2345	2358	36.23%
<b>HBD</b>	(B)	4119	4339	3974	4032	4113	4014	4151	63.77%
<b>BLK</b>	(B)	0	0	0	0	0	0	0	0.00%

- MCP** Market Clearing Price (€/MWh)
- PPT** Priority Price-Taking
- HBD** Hybrid
- BLK** Block
- CPL** Market Coupling Flow

### Trade's Volume Mix

		Sell - MWh	Buy - MWh	
<b>Lignite</b>	(3.6%)	5,282	0	(0.0%)
<b>Crete Conv.</b>	(0.0%)	0	0	(0.0%)
<b>Gas</b>	(31.3%)	45,922	0	(0.0%)
<b>Hydro</b>	(7.1%)	10,387	0	(0.0%)
<b>Imports</b>	(7.9%)	11,571		
<b>RES</b>	(49.3%)	72,270	861	(0.6%)
<b>Crete RES</b>	(0.7%)	1,037	0	(0.0%)
<b>BESS</b>	(0.1%)	193	232	(0.2%)
<b>HV Load</b>	(0.0%)	0	16,670	(11.4%)
<b>MV Load</b>	(0.0%)	0	18,489	(12.6%)
<b>LV Load</b>	(0.0%)	0	69,962	(47.7%)
<b>Crete Load</b>	(0.0%)	0	7,254	(4.9%)
<b>Pumping</b>	(0.0%)	0	1,395	(1.0%)
<b>Exports</b>			30,192	(20.6%)
<b>Sys.Losses</b>	(0.0%)	0	1,607	(1.1%)
<b>D/R Load</b>	(0.0%)	0	0	(0.0%)

