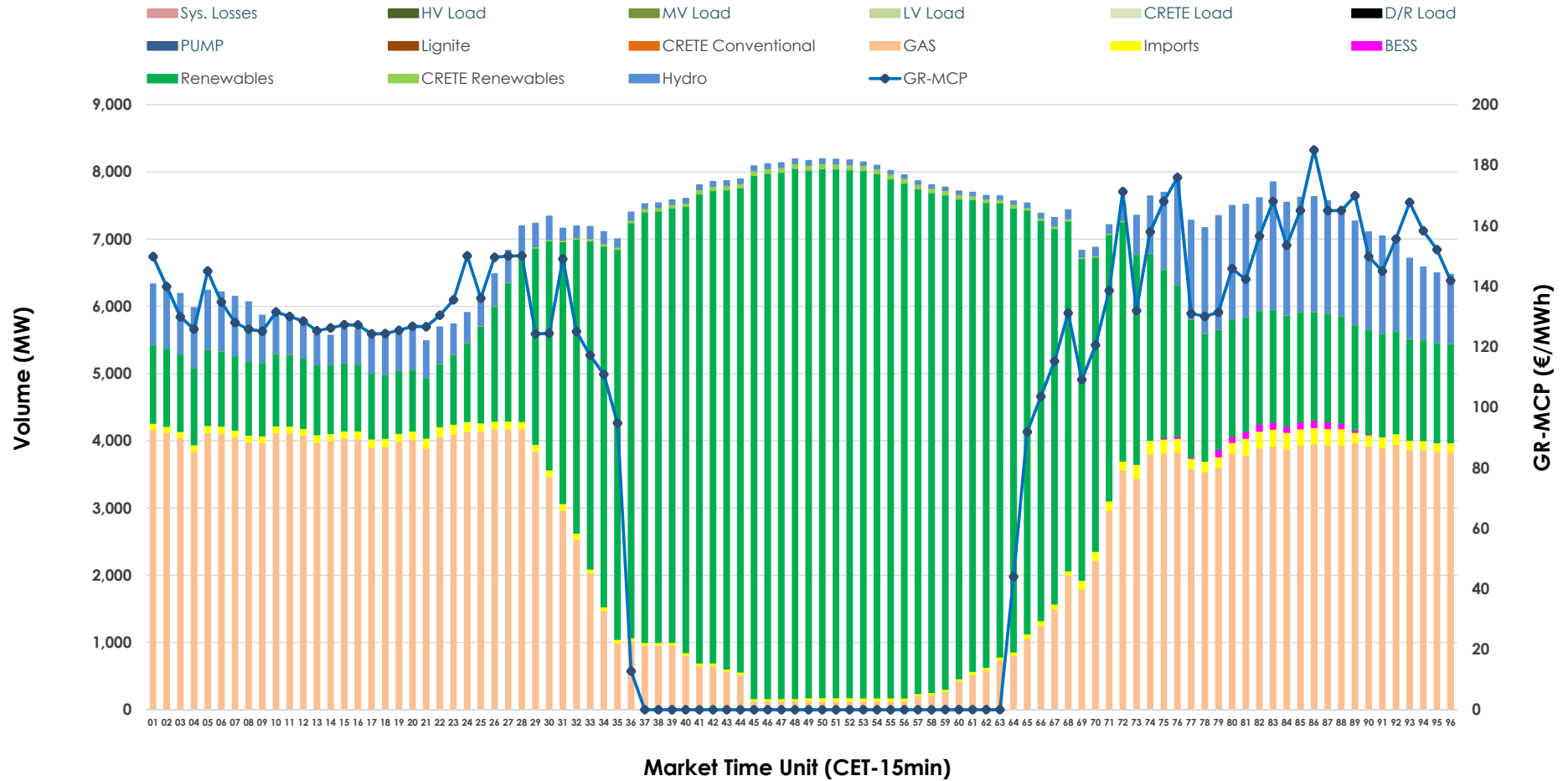


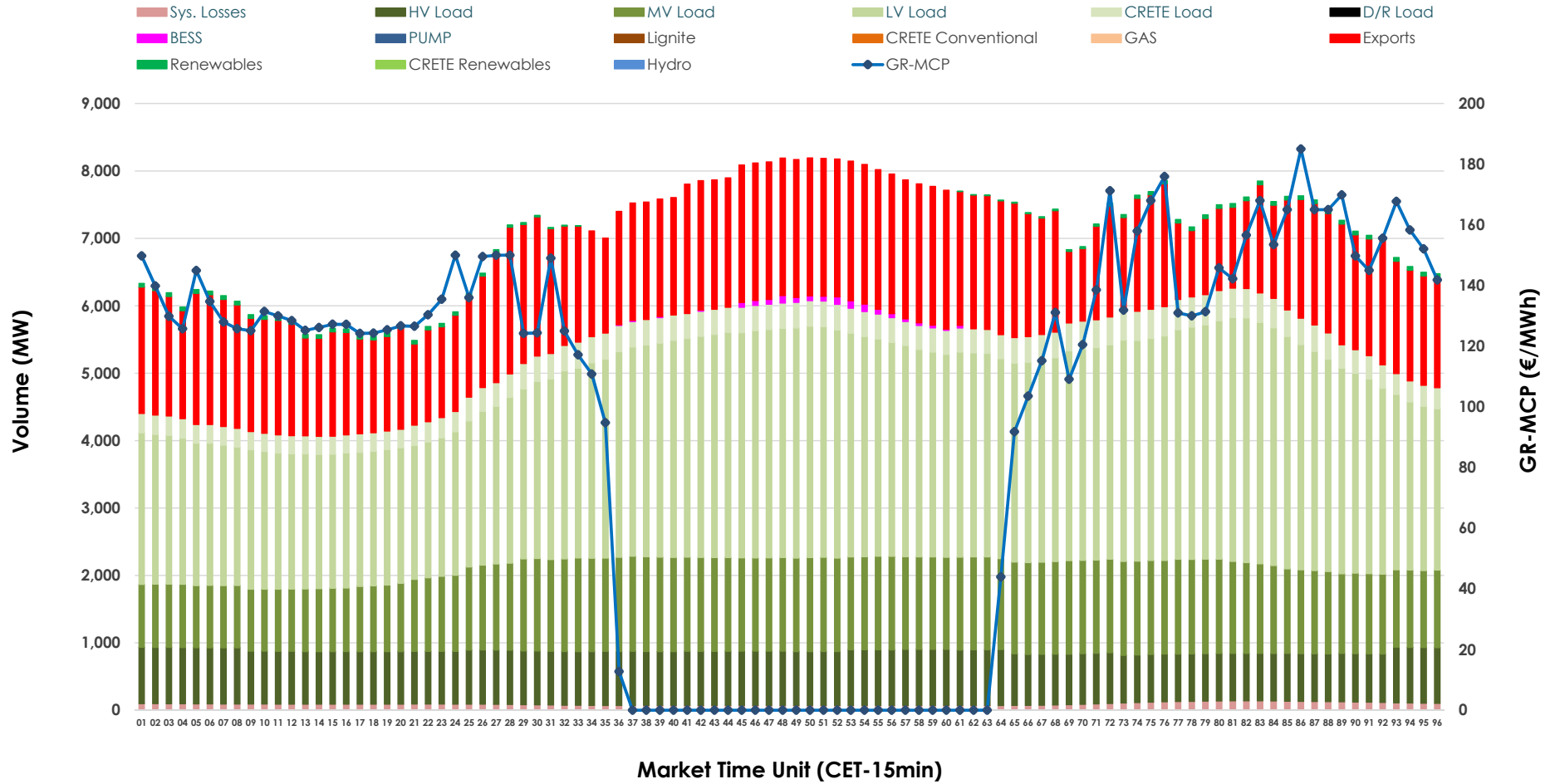


Day-Ahead Market Outlook

01.06.2026 Day-Ahead Market - Sell



01.06.2026 Day-Ahead Market - Buy



GR Bidding Zone Weekly Figures

Delivery Day	26.05	27.05	28.05	29.05	30.05	31.05	01.06
	↗ 15%	↗ 13%	↘ -7%	↘ -7%	↗ 11%	↘ -6%	↗ 11%
Avg.MCP (€/MWh)	84.59	95.98	89.64	83.77	92.62	87.36	97.12
Max.MCP (€/MWh)	214.80	277.76	199.16	173.41	216.79	166.99	185.00
Min.MCP (€/MWh)	-0.01	-0.01	0.00	-0.01	-1.64	-0.01	0.00
	↗ 7%	➡ -1%	↘ -2%	↗ 4%	↘ -13%	↘ -3%	↗ 11%
Tot.Vol(GWh)	358.48	355.94	348.78	363.45	316.75	306.63	339.56

Trades by Order Type

Delivery Day		26.05	27.05	28.05	29.05	30.05	31.05	01.06	
Ord Price Type		Sell & Buy Trades in (GWh) per Price Type							(%)
PPT	(S)	78.984	68.767	62.856	71.215	67.224	63.025	62.576	36.86%
HBD	(S)	75.012	77.269	78.987	80.425	65.767	62.234	76.261	44.92%
BLK	(S)	25.245	31.936	32.486	30.087	25.384	28.056	30.945	18.23%
CPL	(S)	0.000	0.000	0.063	0.000	0.000	0.000	0.000	0.00%
PPT	(B)	15.384	15.153	15.640	15.607	15.170	13.900	15.188	8.95%
HBD	(B)	132.398	133.694	135.255	136.644	122.362	115.985	128.365	75.61%
BLK	(B)	0.000	0.000	0.000	0.000	0.000	0.000	0.000	0.00%
CPL	(B)	31.459	29.124	23.497	29.476	20.843	23.430	26.229	15.45%
		Sell & Buy Orders Traded per Price Type							(%)
PPT	(S)	1809	1828	1843	1765	1835	1814	1750	33.92%
HBD	(S)	3138	3360	3490	3295	3258	3170	3394	65.79%
BLK	(S)	12	13	13	13	17	15	15	0.29%
PPT	(B)	2362	2344	2370	2354	2346	2301	2384	38.36%
HBD	(B)	4095	4069	3997	4076	3982	3669	3831	61.64%
BLK	(B)	0	0	0	0	0	0	0	0.00%

- MCP** Market Clearing Price (€/MWh)
- PPT** Priority Price-Taking
- HBD** Hybrid
- BLK** Block
- CPL** Market Coupling Flow

Trade's Volume Mix

		Sell - MWh	Buy - MWh	
Lignite	(0.0%)	0	0	(0.0%)
Crete Conv.	(0.0%)	0	0	(0.0%)
Gas	(37.0%)	62,822	0	(0.0%)
Hydro	(8.2%)	13,999	0	(0.0%)
Imports	(1.6%)	2,659		
RES	(52.6%)	89,365	753	(0.4%)
Crete RES	(0.4%)	662	0	(0.0%)
BESS	(0.2%)	274	310	(0.2%)
HV Load	(0.0%)	0	18,766	(11.1%)
MV Load	(0.0%)	0	29,992	(17.7%)
LV Load	(0.0%)	0	67,984	(40.0%)
Crete Load	(0.0%)	0	8,559	(5.0%)
Pumping	(0.0%)	0	0	(0.0%)
Exports			41,220	(24.3%)
Sys.Losses	(0.0%)	0	2,199	(1.3%)
D/R Load	(0.0%)	0	0	(0.0%)

